

Donegal 9
40° 00'

- ACTIVE OIL WELL
- ABANDONED OIL WELL
- ⊙ ACTIVE GAS WELL
- ⊙ ABANDONED GAS WELL
- * ACTIVE OIL & GAS WELL
- * ABANDONED OIL & GAS WELL
- ◇ DRY HOLE
- NO RECORD

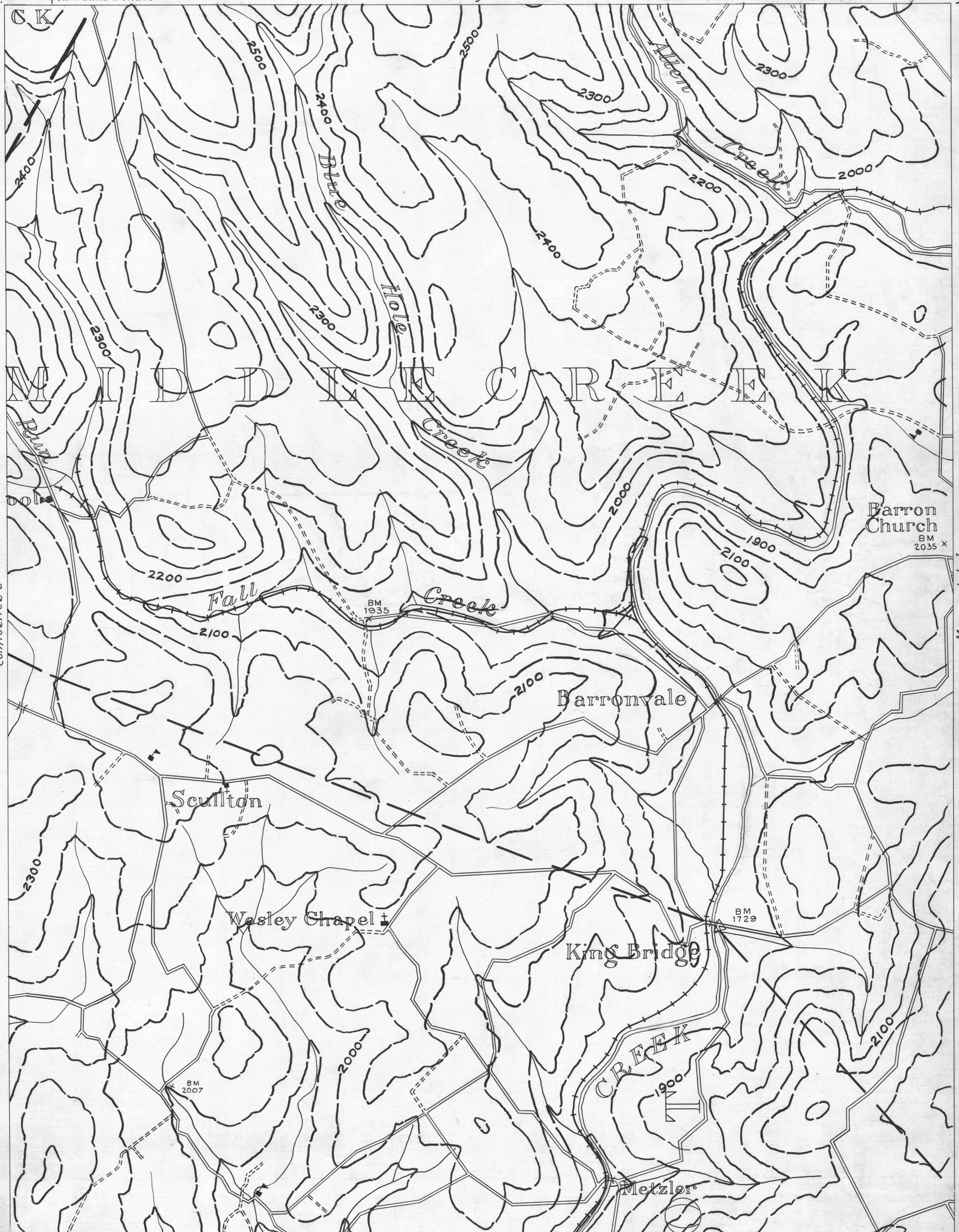
- * ACTIVE OIL & GAS WELL
- * ABANDONED OIL & GAS WELL
- ◇ DRY HOLE
- NO RECORD

Donegal 9

- COUNTY LINES
- TOWNSHIP LINES
- BOROUGH LINES

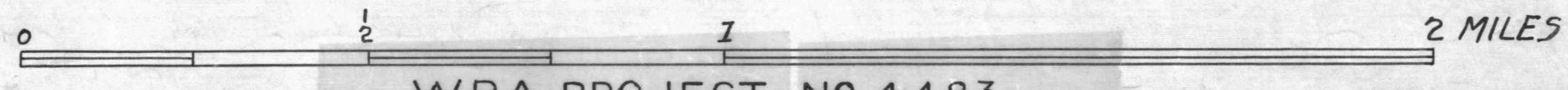
- 980 — COAL CONTOURS
- CROP LINES—SEAMS BEING MINED
- - - CROP LINES—SEAMS NOT BEING MINED

79° 15'
Somerset 17
40° 00'



39° 55'
Confluence 2
79° 20'

- DRIFT OPENING
 - SLOPE OPENING
 - SHAFTS
 - BARRIER PILLAR
- MINE MAP DEPARTMENT 1934



W.P.A. PROJECT No 4483

CONFLUENCE SHEET No.3

39° 55'
79° 15'
Somerset 17