

Caledonia 8 78° 20' 41° 15' Caledonia 9. Clearfield 2 78° 15' 41° 15' Driftwood 7

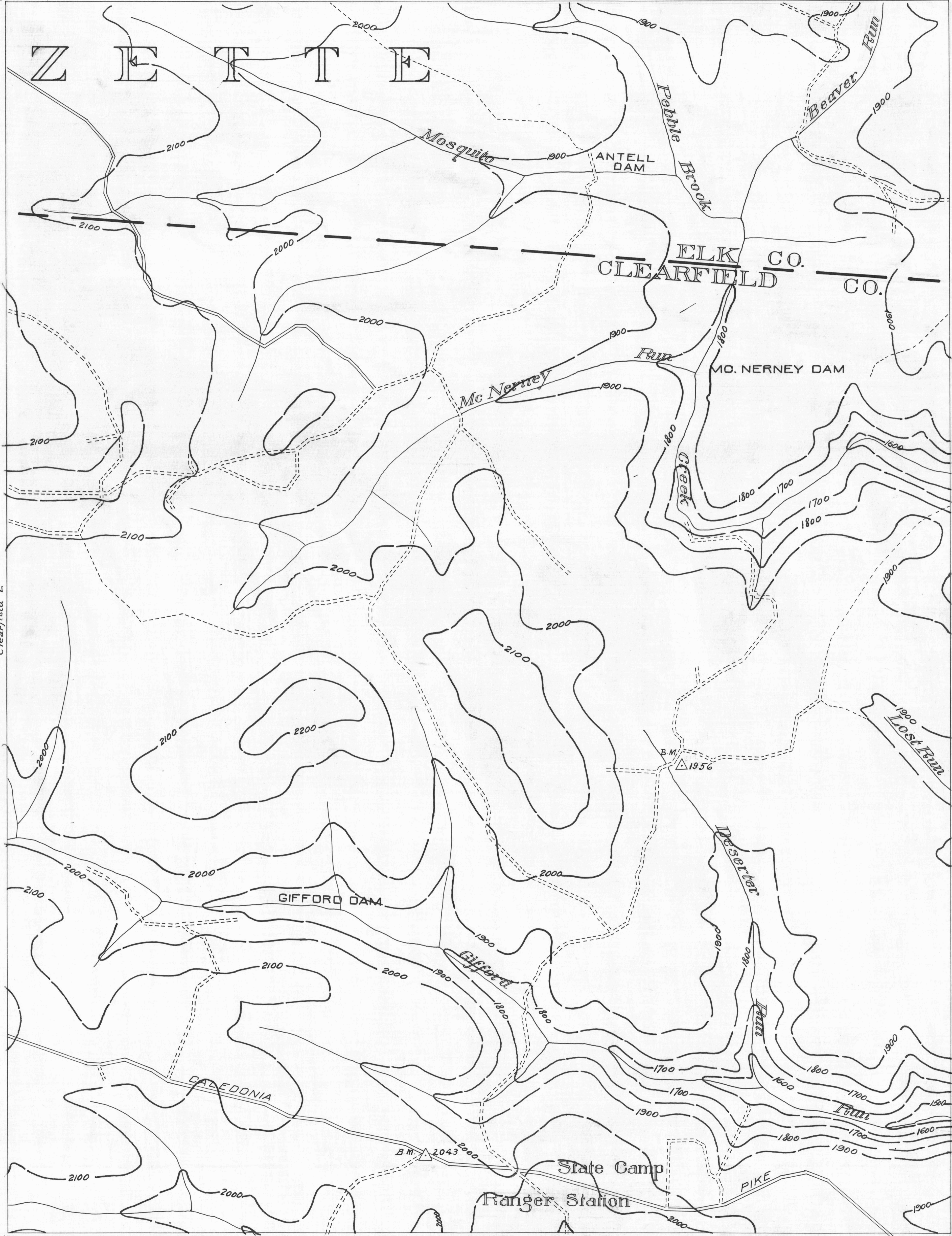
- ACTIVE OIL WELL
- ◊ ABANDONED OIL WELL
- * ACTIVE GAS WELL
- ✱ ABANDONED GAS WELL

- * ACTIVE OIL & GAS WELL
- ✱ ABANDONED OIL & GAS WELL
- ◇ DRY HOLE
- NO RECORD

- ▬ COUNTY LINES
- ▬ TOWNSHIP LINES
- ▬ BOROUGH LINES
- SURFACE CONTOUR

- COAL CONTOURS
- CROP LINES - SEAM BEING MINED
- CROP LINES - SEAMS NOT BEING MINED

Z E T T E



- DRIFT OPENING
- SLOPE OPENING
- SHAFTS
- ▨ BARRIER PILLAR

0 1/2 1 2 MILES CLEARFIELD SHEET No. 3.

W.P.A. PROJECT No 4483

Clearfield 5 78° 20' 41° 10' Clearfield 6 78° 15' 41° 10' Karthaus 4