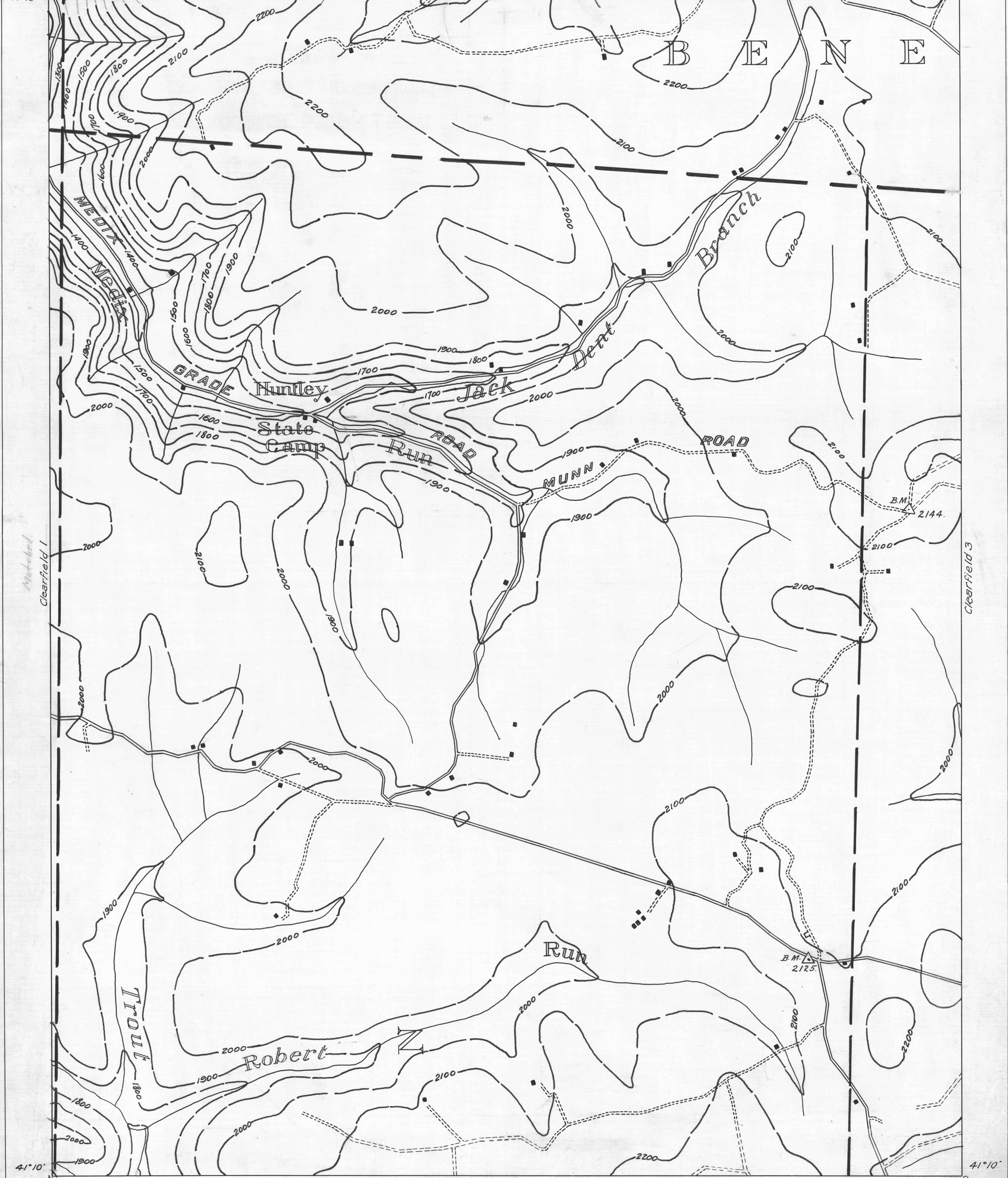


Caledonia 7 78°25' 41°15' Caledonia 8 Caledonia 9 78°20' 41°15'

● ACTIVE OIL WELL	* ACTIVE OIL & GAS WELL	— COUNTY LINES	— COAL CONTOURS
○ ABANDONED OIL WELL	* ABANDONED OIL & GAS WELL	- - - TOWNSHIP LINES	— CROP LINES - SEAM BEING MINED
● ACTIVE GAS WELL	○ DRY HOLE	- - - BOROUGH LINES	- - - CROP LINES - SEAMS NOT BEING MINED
○ ABANDONED GAS WELL	○ NO RECORD	— SURFACE CONTOUR	



Clearfield 1 Clearfield 2 Clearfield 3 Clearfield 4 Clearfield 5 Clearfield 6 Clearfield 7

41°10' 78°25' 41°10' 78°20'

— DRIFT OPENING
— SLOPE OPENING
□ SHAFTS
▣ BARRIER PILLAR

0 1/2 1 2 MILES

W.P.A. PROJECT No. 4483

CLEARFIELD SHEET No. 2.