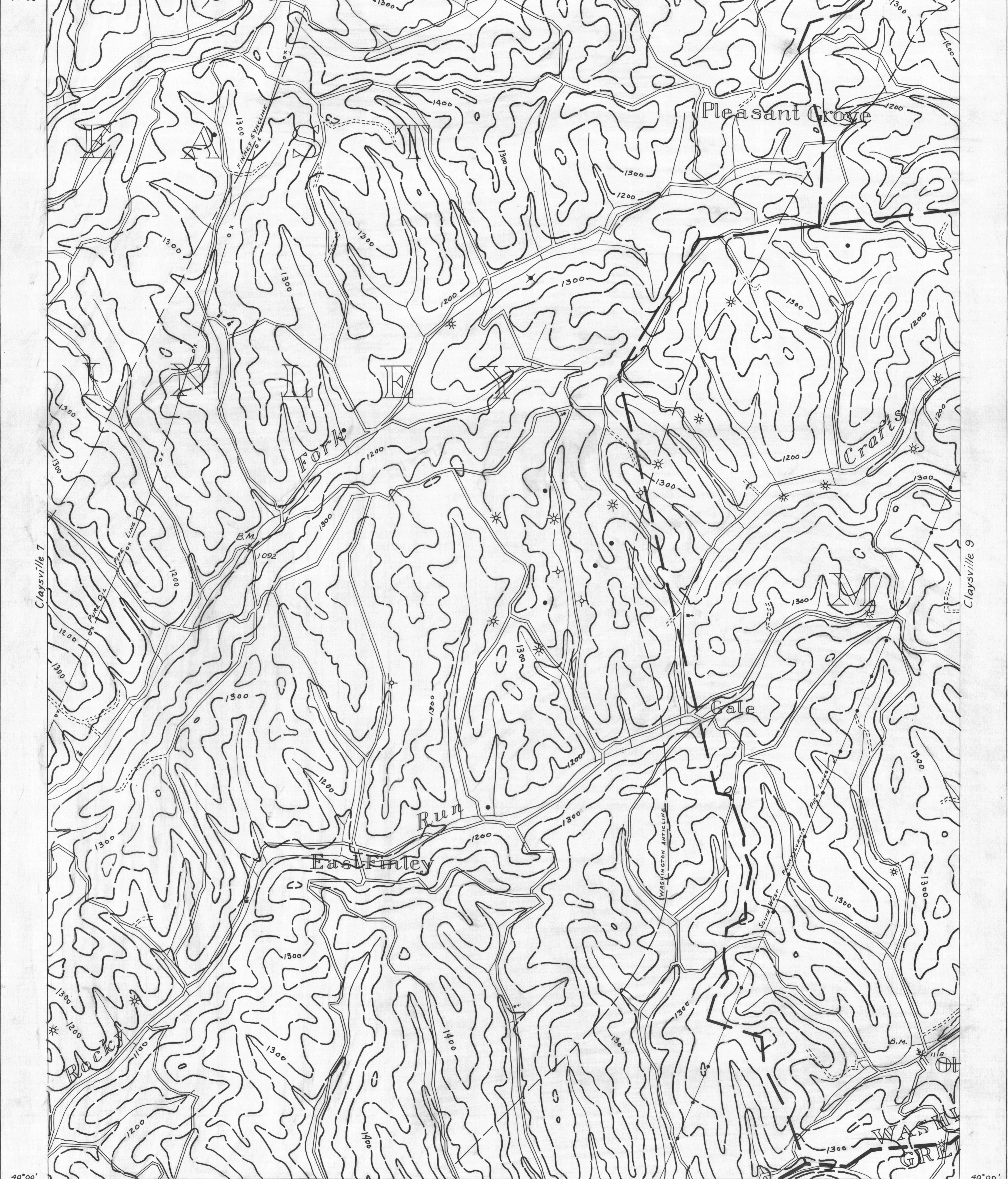


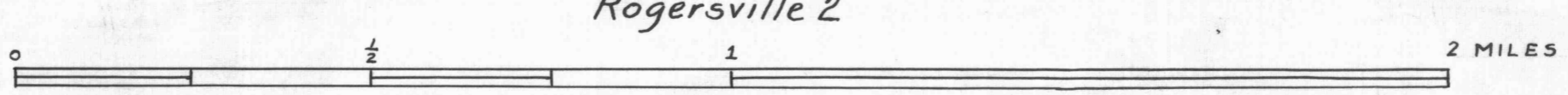
Claysville 4 80°25' 40°05' Claysville 5 Claysville 6 80°20' 40°05'

- ACTIVE OIL WELL
- ◆ ABANDONED OIL WELL
- \* ACTIVE GAS WELL
- \* ABANDONED GAS WELL
- \* ACTIVE OIL & GAS WELL
- \* ABANDONED OIL & GAS WELL
- DRY HOLE
- NO RECORD

- COUNTY LINES
- TOWNSHIP LINES
- BOROUGH LINES
- SURFACE CONTOURS
- COAL CONTOURS
- CROP LINES—SEAM BEING MINED
- CROP LINES—SEAMS NOT BEING MINED



- DRIFT OPENING
- SLOPE OPENING
- SHAFTS
- BARRIER PILLAR



W.P.A. PROJECT NO. 19666

CLAYSVILLE SHEET No. 8

Rogersville 1 80°25' 40°00' Rogersville 2 Rogersville 3 80°20' 40°00'