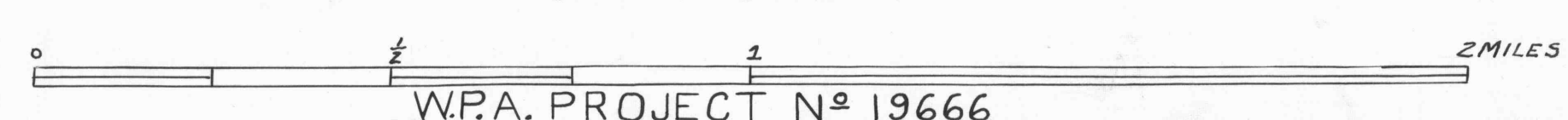


- ACTIVE OIL WELL
- ◆ ABANDONED OIL WELL
- ✱ ACTIVE GAS WELL
- ✱ ABANDONED GAS WELL
- ✱ ACTIVE OIL & GAS WELL
- ✱ ABANDONED OIL & GAS WELL
- ◇ DRY HOLE
- NO RECORD
- COUNTY LINES
- TOWNSHIP LINES
- BOROUGHS LINES
- 980 COAL CONTOURS
- CROP LINES-SEAM BEING MINED
- - - CROP LINES-SEAMS NOT BEING MINED

NOTE: COAL CONTOURS SHOWN ARE FOR UPPER FREEPORT SEAM (uf) AND ARE DERIVED BY ADDING 240 FT. TO VANPORT LIMESTONE ELEVATIONS.

- DRIFT OPENING
- SLOPE OPENING
- SHAFTS
- ▨ BARRIER PILLAR



CLARION SHEET N^o 6
 UPPER FREEPORT SEAM (uf)

W.P.A. PROJECT N^o 19666

Clarion 2 1920' 41°10'
 Clarion 3
 Clarion 4 1915' Brookville 1 41°10'
 Clarion 5
 Greenville Limestone P.O. B.M. 1270
 Kingsville B.M. 1387
 M E S T O N E
 Piney Creek
 Little
 UNITED NAT. GAS CO. PIPE LINE 12"
 PEOPLES NAT. GAS CO. PIPE LINE 12"
 ANTICLINE
 Frogtown
 Crates
 KELLERSBURG
 Sloan Gap
 Clarion 6
 Clarion 8 1920' 41°05'
 Clarion 9
 Brookville 4
 Brookville 7 1915' 41°05'