

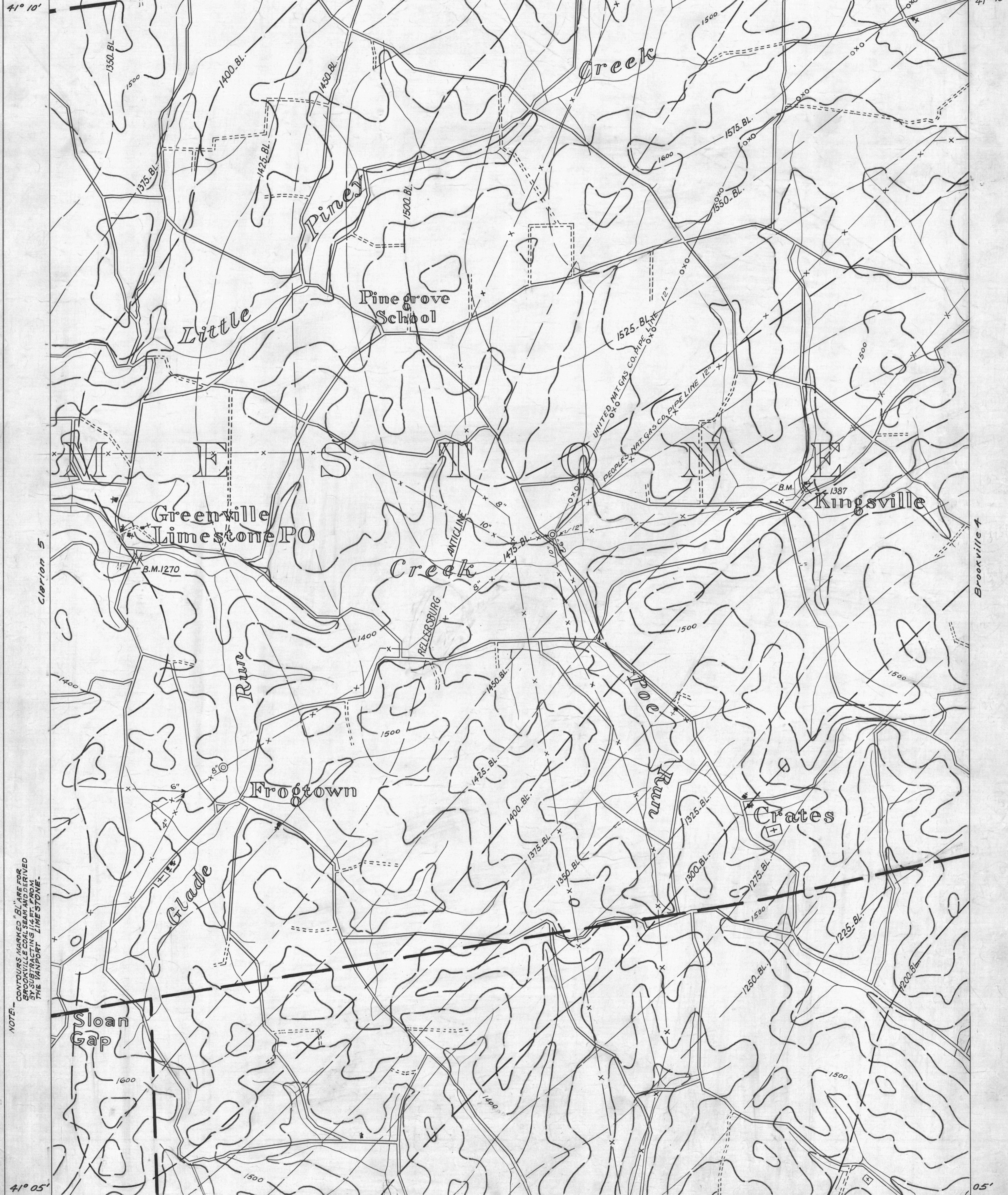
Clarion 2 79°20' 41°10'

● ACTIVE OIL WELL
 ○ ABANDONED OIL WELL
 * ACTIVE GAS WELL
 ✖ ABANDONED GAS WELL
 ✖ ACTIVE OIL & GAS WELL
 ✖ ABANDONED OIL & GAS WELL
 ○ DRY HOLE
 ○ NO RECORD

COUNTY LINES
 TOWNSHIP LINES
 BOROUGH LINES
 SURFACE CONTOURS

980 COAL CONTOURS
 CROP LINES - SEAM BEING MINED
 CROP LINES - SEAMS NOT BEING MINED

Clarion 3 79°15' Brookville 1 41°15'



NOTE - CONTOURS MARKED "BL" ARE FOR BROOKVILLE COAL SEAM AND DERIVED BY SUBTRACTING 14.4 FT. FROM THE VANPORT LIMESTONE.

Clarion 8 79°20' 41°05'

- - - DRIFT OPENING
 - - - SLOPE OPENING
 □ SHAFTS
 ■ BARRIER PILLAR

Clarion 9 Scale 2 miles

CLARION-6 Brookville Seam

W.P.A. PROJECT NO.4483

Clarion 7 79°15' Brookville 2 41°05'