

39° 50' 80° 35'

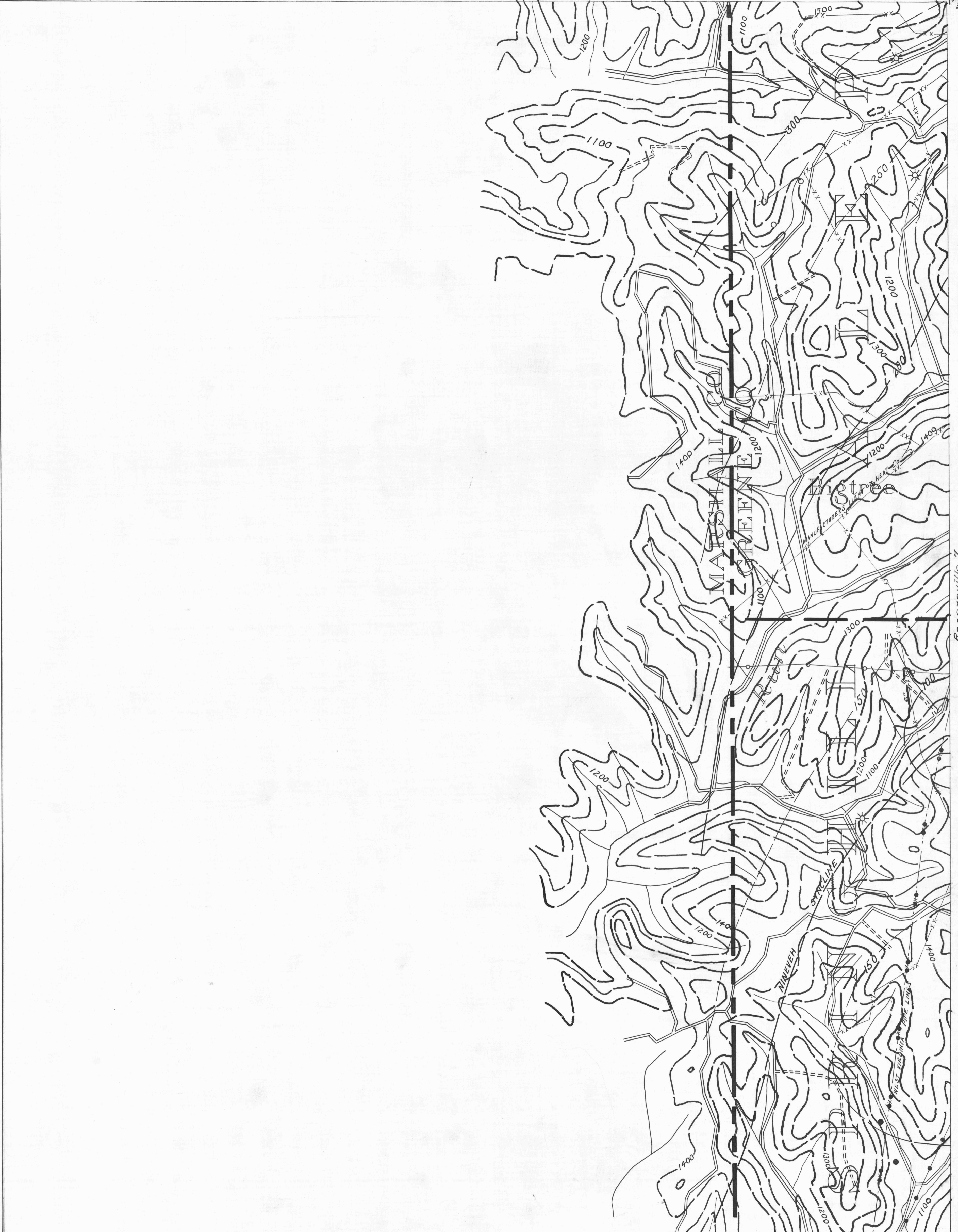
- ACTIVE OIL WELL
- ◆ ABANDONED OIL WELL
- ⊛ ACTIVE GAS WELL
- ⊛ ABANDONED GAS WELL
- ⊛ ACTIVE OIL & GAS WELL
- ⊛ ABANDONED OIL & GAS WELL
- DRY HOLE
- NO RECORD

Cameron 6

- COUNTY LINES
- TOWNSHIP LINES
- BOROUGH LINES
- SURFACE CONTOURS
- COAL CONTOURS
- CROP LINES - SEAM BEING MINED
- CROP LINES - SEAMS NOT BEING MINED

- COAL CONTOURS
- CROP LINES - SEAM BEING MINED
- CROP LINES - SEAMS NOT BEING MINED

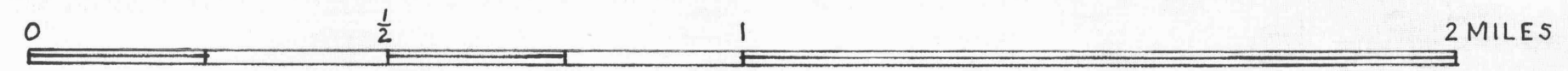
39° 50' ROGERSVILLE A



39° 45' 80° 35'

- DRIFT OPENING
- SLOPE OPENING
- SHAFTS
- ▨ BARRIER PILLAR

Littleton 3



W.P.A. PROJECT NO 4483

CAMERON SHEET No. 9.  
PITTSBURGH SEAM  
CAMERON, W. VA.

39° 45' MEMPHISTON I