

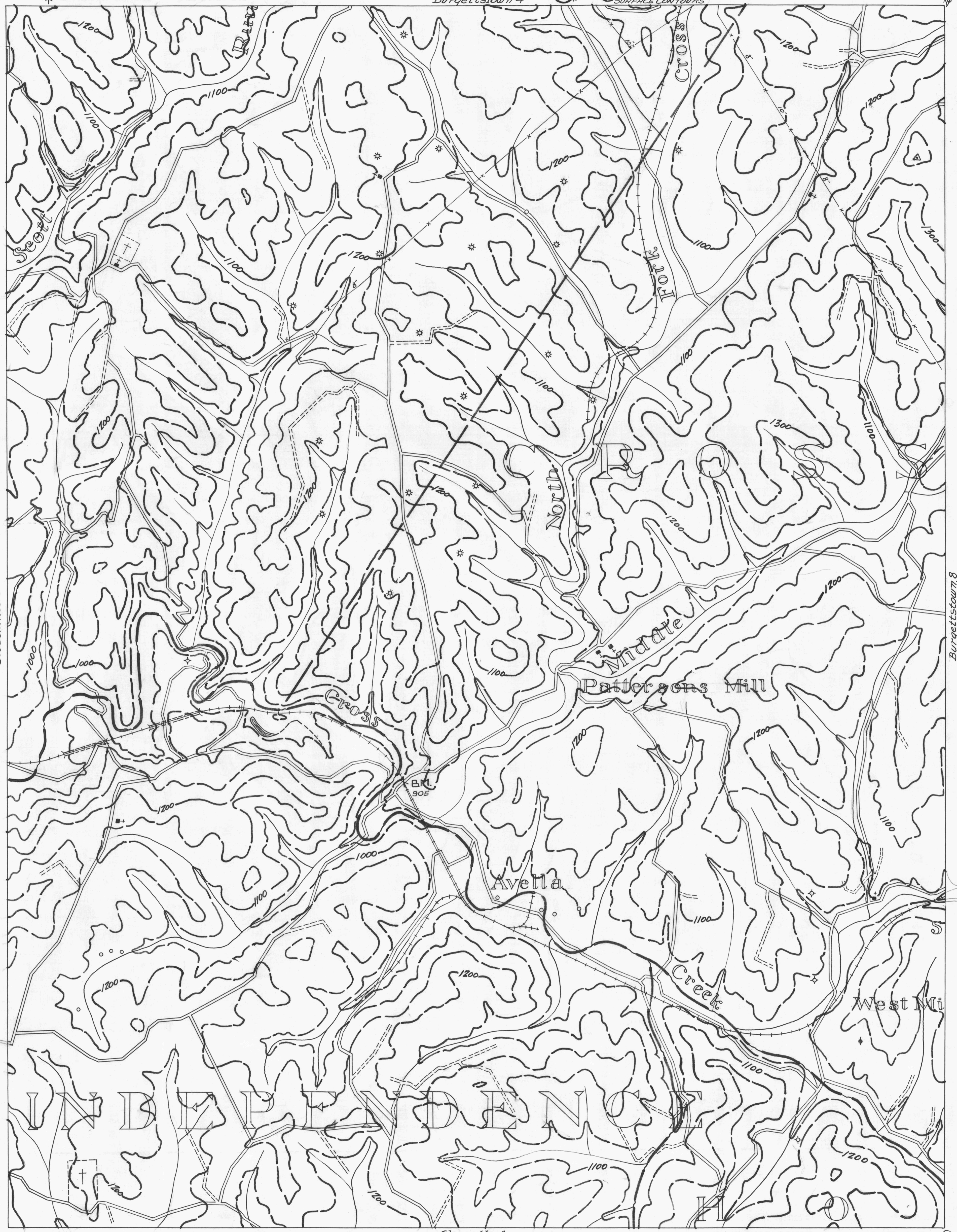
Stubenville 6 89°25' 40°20' Burgettstown 4 Burgettstown 5 89°25' 40°20'

- ACTIVE OIL WELL
- ABANDONED OIL WELL
- ★ ACTIVE GAS WELL
- ✱ ABANDONED GAS WELL
- ◇ DRY HOLE
- NO RECORD

- ★ ACTIVE OIL & GAS WELL
- ✱ ABANDONED OIL & GAS WELL
- ◇ DRY HOLE
- NO RECORD

- COUNTY LINES
- TOWNSHIP LINES
- BOROUGH LINES
- SURFACE CONTOURS

- COAL CONTOURS
- CROP LINES—SEAM BEING MINED.
- CROP LINES—SEAM NOT BEING MINED.



40°15' 89°30' Wheeling 3

40°15' 89°25' Clayville 2

- DRIFT OPENING
- SLOPE OPENING
- SHAFTS
- ▨ BARRIER PILLAR



W.P.A. PROJECT NO. 25734

BURGETTSTOWN SHEET NO. 7