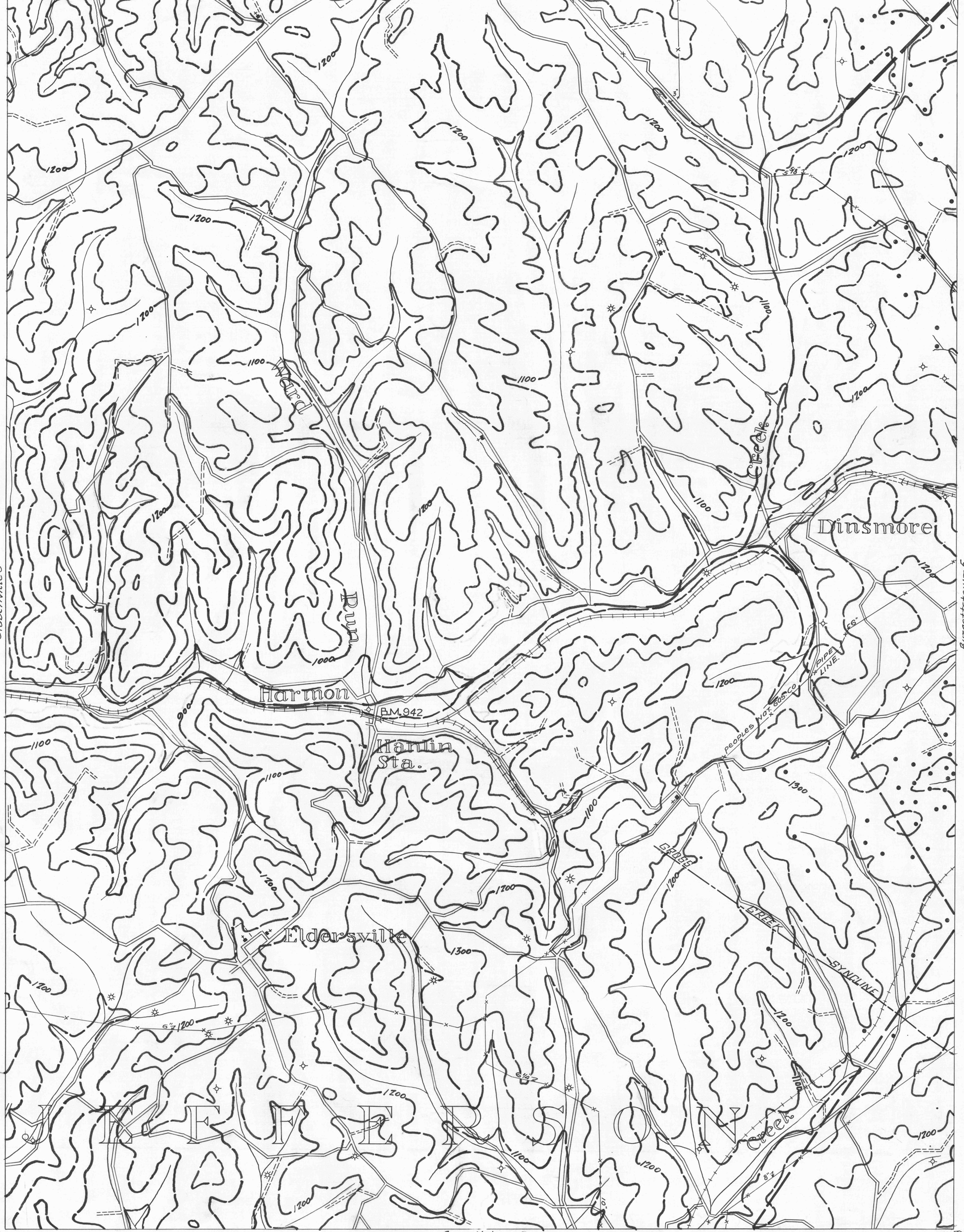


Stubbsville 3 40°25' 80°30' Burgettstown 1 80°25' 40°25' Burgettstown 2
 ● ACTIVE OIL WELL * ACTIVE OIL & GAS WELL ——— COUNTY LINES ——— COAL CONTOURS
 ● ABANDONED OIL WELL * ABANDONED OIL & GAS WELL - - - TOWNSHIP LINES ——— CROP LINES-SEAM BEING MINED
 * ACTIVE GAS WELL ◇ DRY HOLE - - - BOROUGH LINES - - - CROP LINES-SEAM NOT BEING MINED
 * ABANDONED GAS WELL ○ No. RECORD ——— SURFACE CONTOURS



Stubbsville 6 40°20' 80°30' Burgettstown 7 80°25' 40°20' Burgettstown 8
 ——— DRIFT OPENING
 ——— SLOPE OPENING
 □ SHAFTS
 ▨ BARRIER PILLAR
 WPA. PROJECT NO. 25734
 BURGETTSTOWN SHEET NO. 4
 3 MILES