

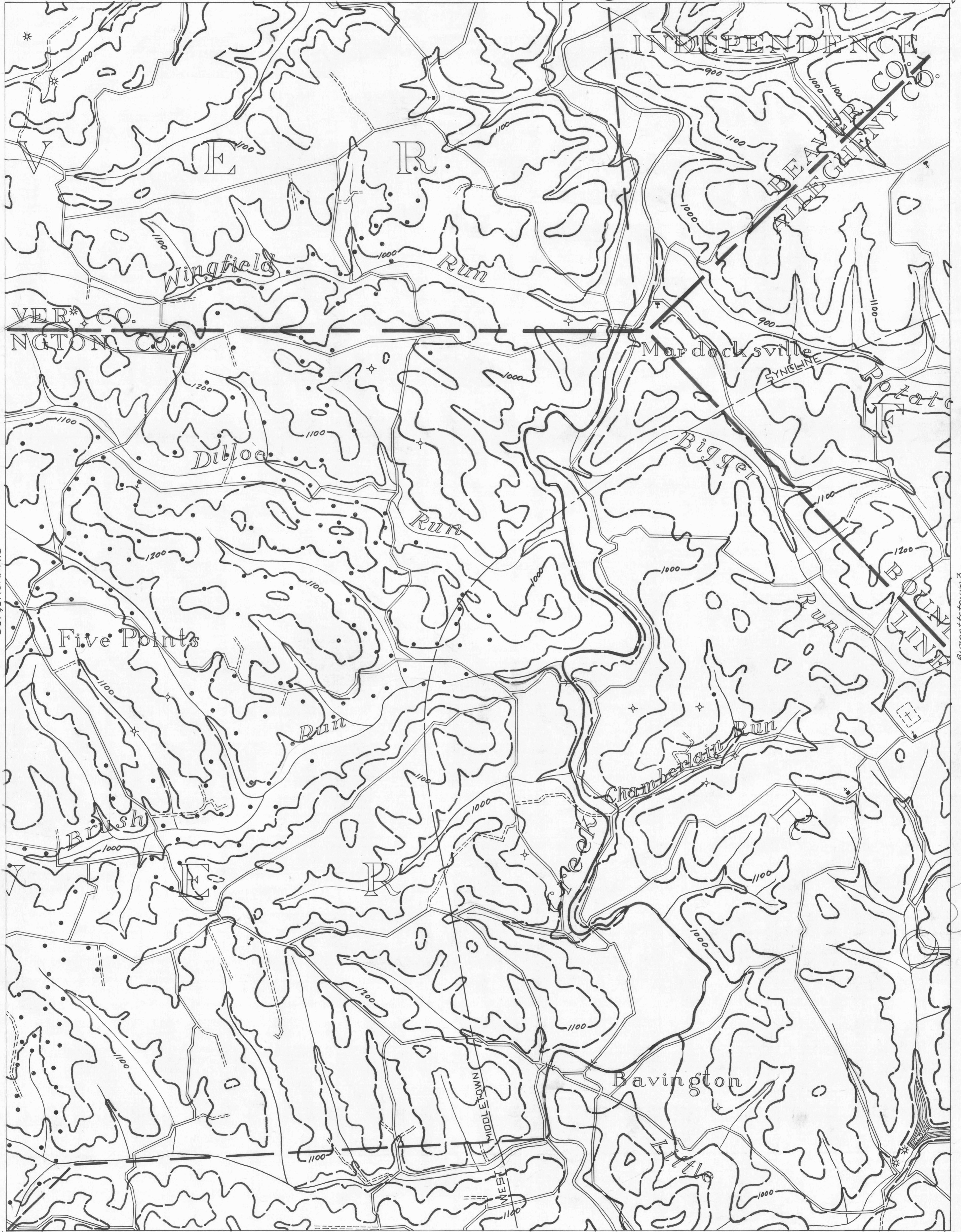
Beaver 7
40° 30'

- ACTIVE OIL WELL
- ABANDONED OIL WELL
- ★ ACTIVE GAS WELL
- ◇ ABANDONED GAS WELL
- ★ ACTIVE OIL & GAS WELLS
- ABANDONED OIL & GAS WELLS
- ◇ DRY HOLE
- NO RECORD

- COUNTY LINES
- TOWNSHIP LINES
- BOROUGH LINES
- SURFACE CONTOURS
- COAL CONTOURS
- CROP LINES-SEAM BEING MINED
- CROP LINES-SEAM NOT BEING MINED

Beaver 8

Beaver 9
40° 30'



Burgettstown 1

Burgettstown 3

Burgettstown 4
40° 25'

Burgettstown 5
40° 25'

- DRIFT OPENING
- SLOPE OPENING
- SHAFTS
- ▨ BARRIER PILLAR

Burgettstown 5

2 Miles

BURGETTSTOWN SHEET NO 2

W.P.A. PROJECT NO. 25734