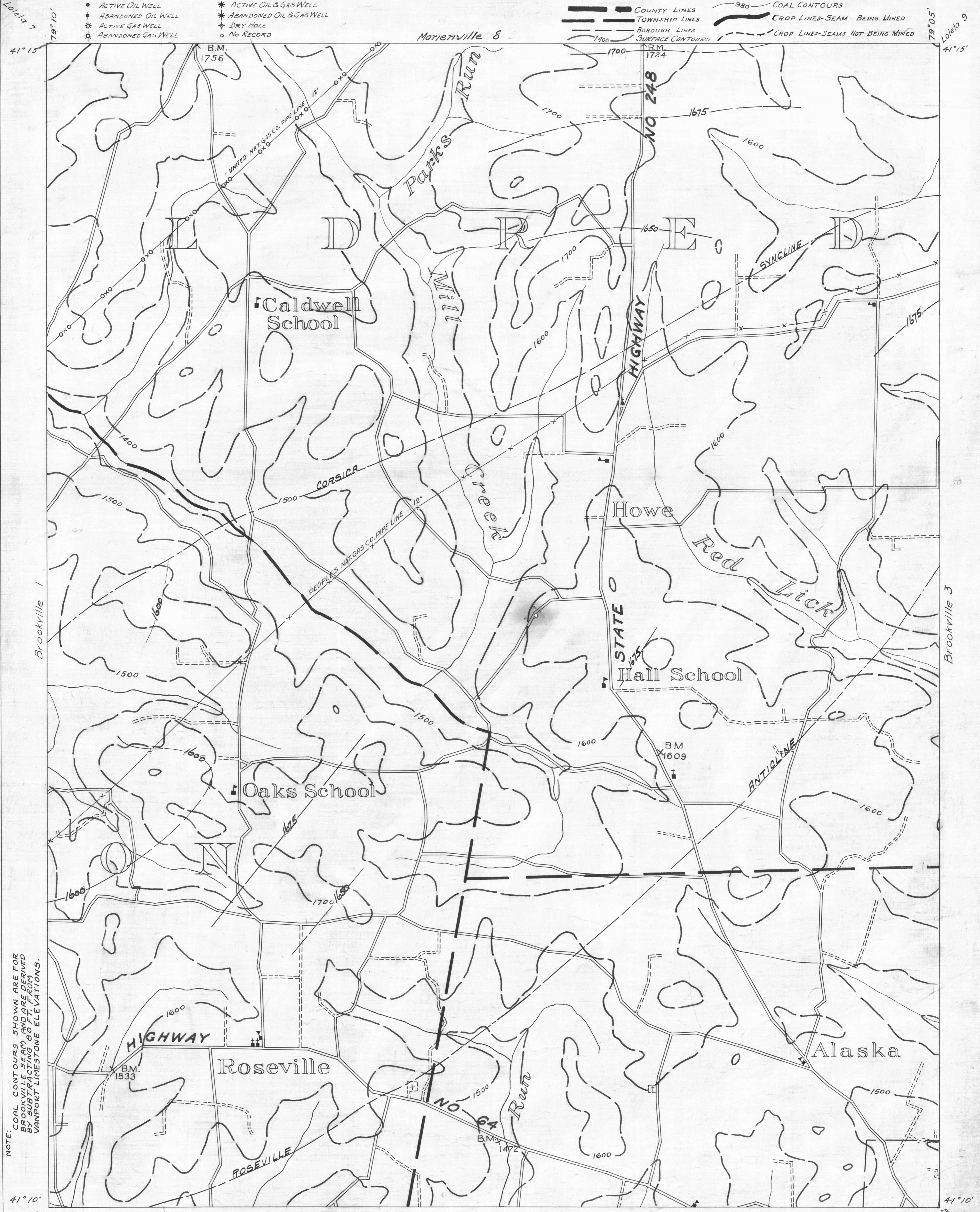


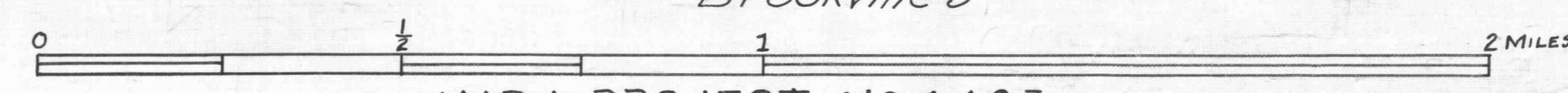
- ACTIVE OIL WELL
- ◆ ABANDONED OIL WELL
- * ACTIVE GAS WELL
- * ABANDONED GAS WELL
- * ACTIVE OIL & GAS WELL
- * ABANDONED OIL & GAS WELL
- ◇ DRY HOLE
- NO RECORD

- COUNTY LINES
- TOWNSHIP LINES
- BOROUGH LINES
- SURFACE CONTOURS
- 980 — COAL CONTOURS
- CROP LINES-SEAM BEING MINED
- CROP LINES-SEAMS NOT BEING MINED



NOTE: COAL CONTOURS SHOWN ARE FOR BROOKVILLE SEAM AND ARE DERIVED BY SUBTRACTING 80 FT. FROM VANPORT LIMESTONE ELEVATIONS.

- DRIFT OPENING
- SLOPE OPENING
- SHAFTS
- ▨ BARRIER PILLAR



W.P.A. PROJECT NO 4483

Lower Kittanning Seam
Brookville Sheet No. 2