

Hoytville 3
41° 40'
Hoytville 6
41° 35'

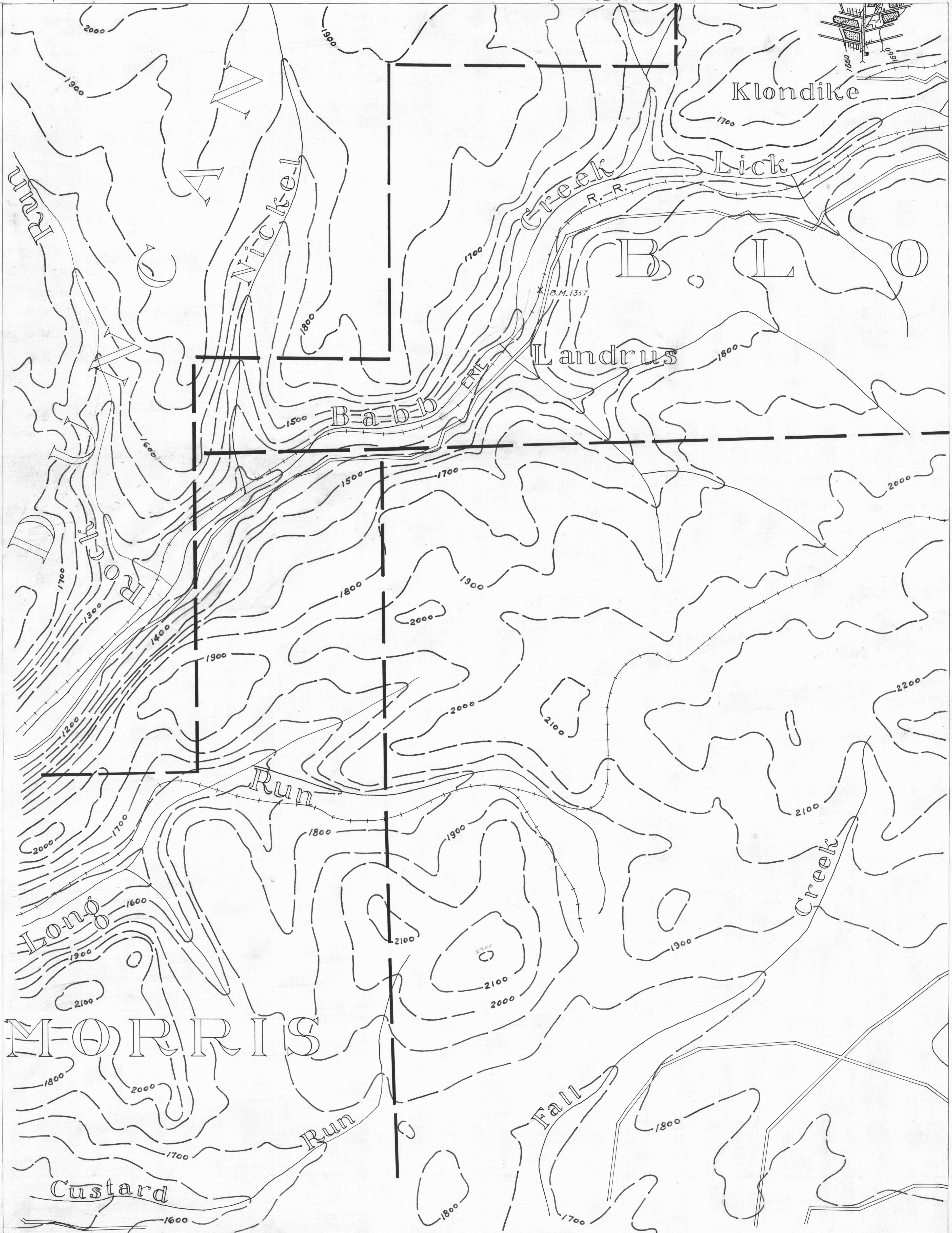
Blossburg 2
41° 40'
Blossburg 5
Blossburg 7
41° 35'

- ACTIVE OIL WELL
- ABANDONED OIL WELL
- ★ ACTIVE GAS WELL
- ★ ABANDONED GAS WELL

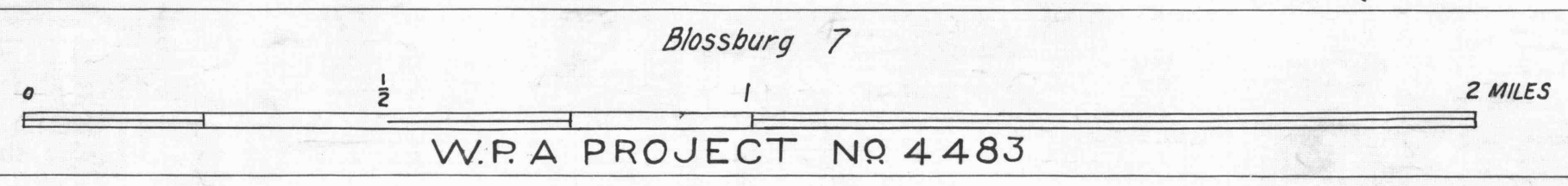
- ★ ACTIVE OIL & GAS WELL
- ★ ABANDONED OIL & GAS WELL
- ◇ DRY HOLE
- NO RECORD

- COUNTY LINES
- TOWNSHIP LINES
- BOROUGH LINES
- SURFACE CONTOURS

- COAL CONTOURS
- CROP LINES-SEAM BEING MINED
- CROP LINES-SEAMS NOT BEING MINED



- DRIFT OPENING
- SLOPE OPENING
- SHAFTS
- ▨ BARRIER PILLAR



BLOSSBURG SHEET NO. 4
Lower Kittanning Seam 1.k.

W.P.A PROJECT NO 4483