

Tioga 8
77° 5'
41° 45'

- ACTIVE OIL WELL
- ABANDONED OIL WELL
- ★ ACTIVE GAS WELL
- ⊕ ABANDONED GAS WELL
- ⊙ NO RECORD

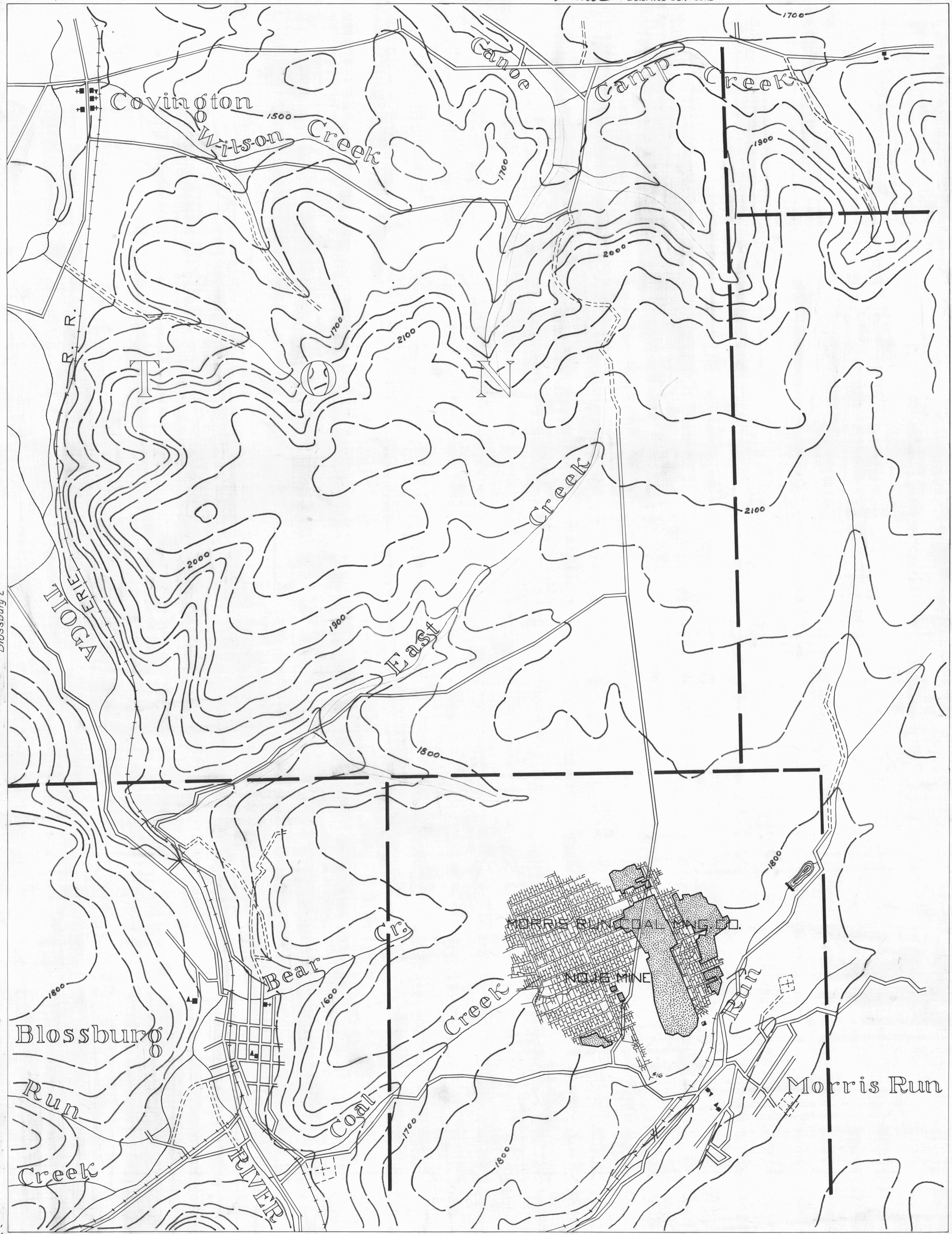
- ★ ACTIVE OIL & GAS WELL
- ⊕ ABANDONED OIL & GAS WELL
- ⊙ DRY HOLE
- NO RECORD

Tioga 9

- COUNTY LINES
- TOWNSHIP LINES
- BOROUGH LINES
- SURFACE CONTOURS

- COAL CONTOURS
- CROP LINES - SEAM BEING MINED
- CROP LINES - SEAMS NOT BEING MINED

77° 00'
Troy 1
41° 45'



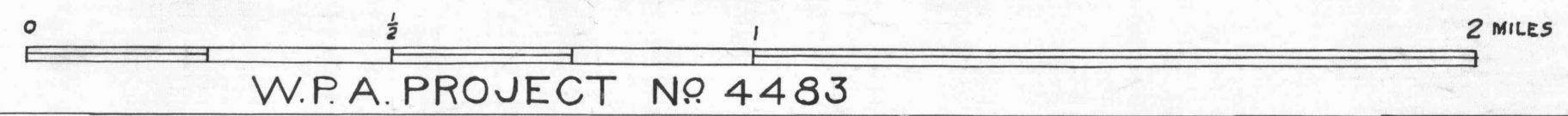
Blossburg 2

Grover 1

41° 40'
Blossburg 5
77° 5'

- DRIFT OPENING
- SLOPE OPENING
- SHAFTS
- ▣ BARRIER PILLAR

Blossburg 6



W.P.A. PROJECT NO 4483

BLOSSBURG SHEET NO. 3
MORGAN SEAM

41° 40'
Grover 4
77° 00'