

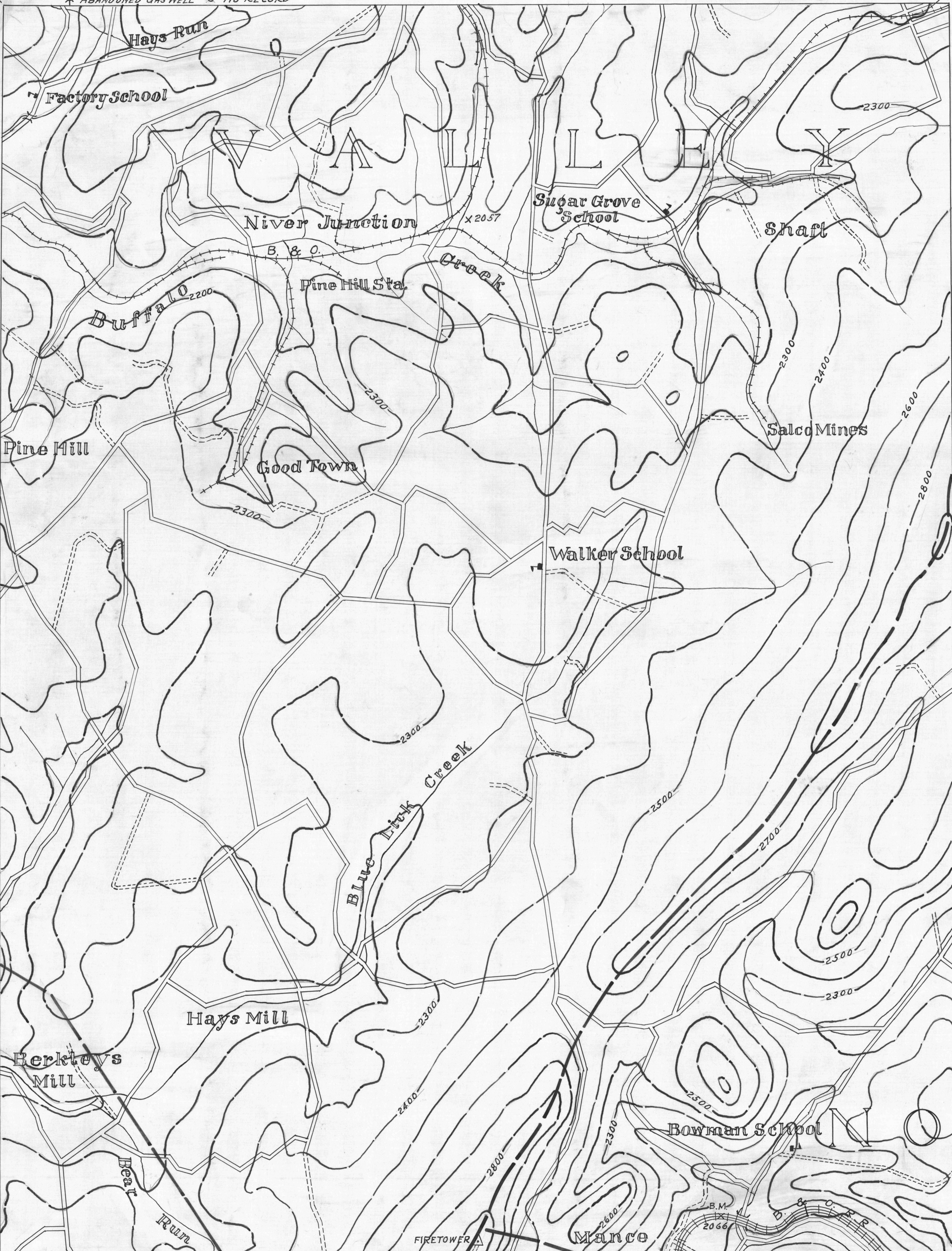
Meyersdale-3
39°55'

- ACTIVE OIL WELL
- ABANDONED OIL WELL
- ⊗ ACTIVE GAS WELL
- ⊗ ABANDONED GAS WELL
- ★ ACTIVE OIL & GAS WELL
- ★ ABANDONED OIL & GAS WELL
- ⊕ DRY HOLE
- ⊕ NO RECORD

Berlin-1

- COUNTY LINES
- TOWNSHIP LINES
- BOROUGH LINES
- 980 COAL CONTOURS
- CROP LINES—SEAM BEING MINED
- - - CROP LINES—SEAMS NOT BEING MINED

78°55'
Berlin-2
39°55'



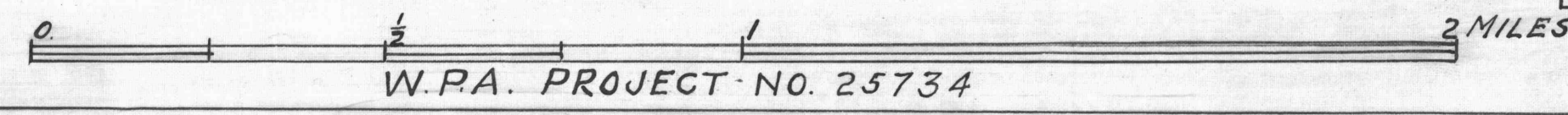
Meyersdale-6

Berlin-5

39°50'
Meyersdale-9
79°00'

- DRIFT OPENING
- SLOPE OPENING
- SHAFTS
- ▨ BARRIER PILLAR

Berlin-7



W.P.A. PROJECT NO. 25734

BERLIN SHEET NO. 4.

SURFACE.

39°50'
Berlin-8
79°00'