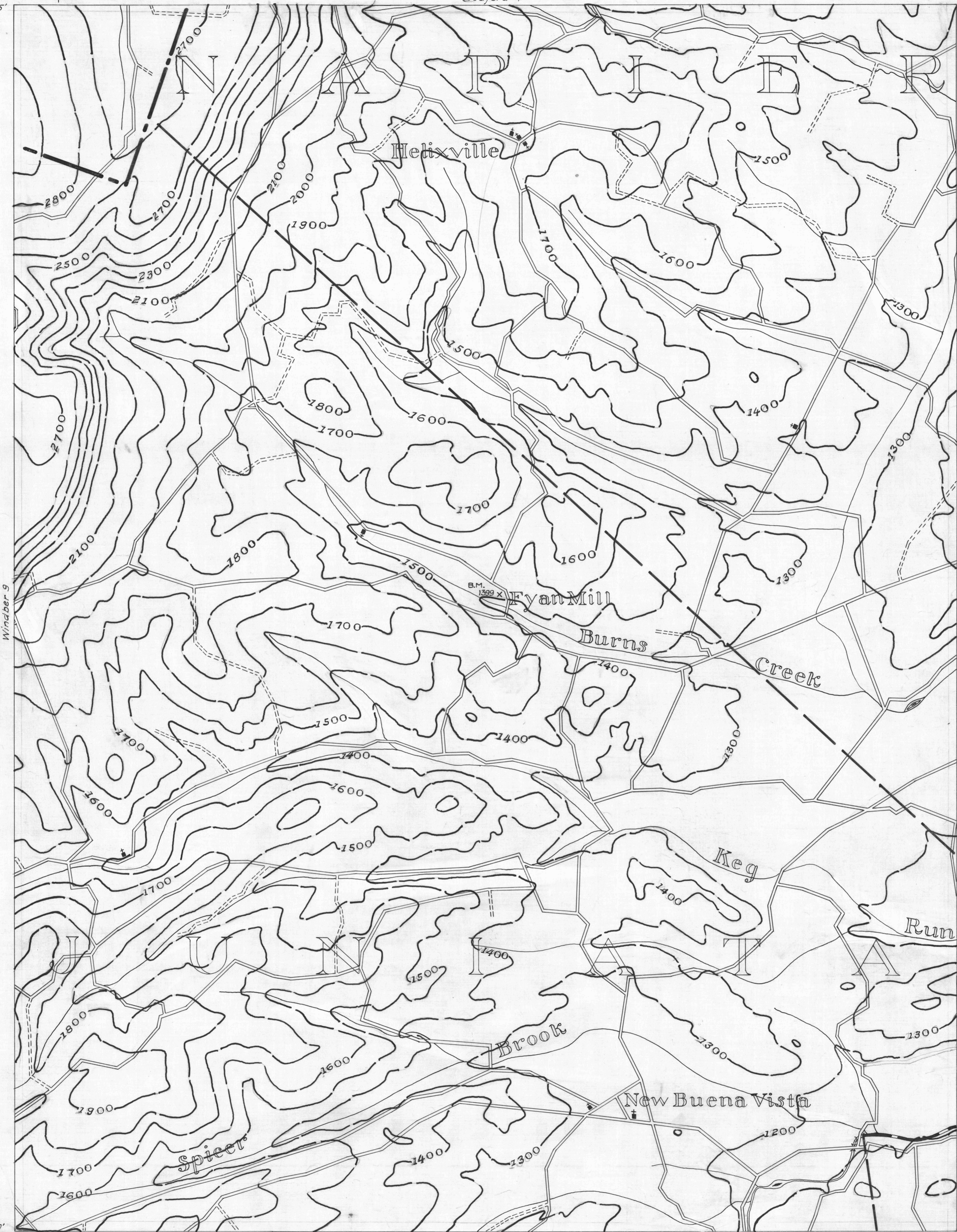


Windber 6 78°45' 40°05' Bedford 4
 ● ACTIVE OIL WELL * ACTIVE OIL & GAS WELL — SURFACE CONTOURS — COUNTY LINES — COAL CONTOURS
 ◐ ABANDONED OIL WELL * ABANDONED OIL & GAS WELL — TOWNSHIP LINES — CROP LINES-SEAM BEING MINED
 * ACTIVE GAS WELL ◐ DRY HOLE — BOROUGH LINES - - - CROP LINES-SEAMS NOT BEING MINED
 * ABANDONED GAS WELL ○ NO RECORD

noted



Windber 9 78°45' 40°00' Bedford 8
 — DRIFT OPENING
 — SLOPE OPENING
 ■ SHAFTS
 ▨ BARRIER PILLARS
 0 1 2 MILES
 W. P. A. PROJECT N° 25734
 BEDFORD SHEET NO. 7
 78°40' 40°00'