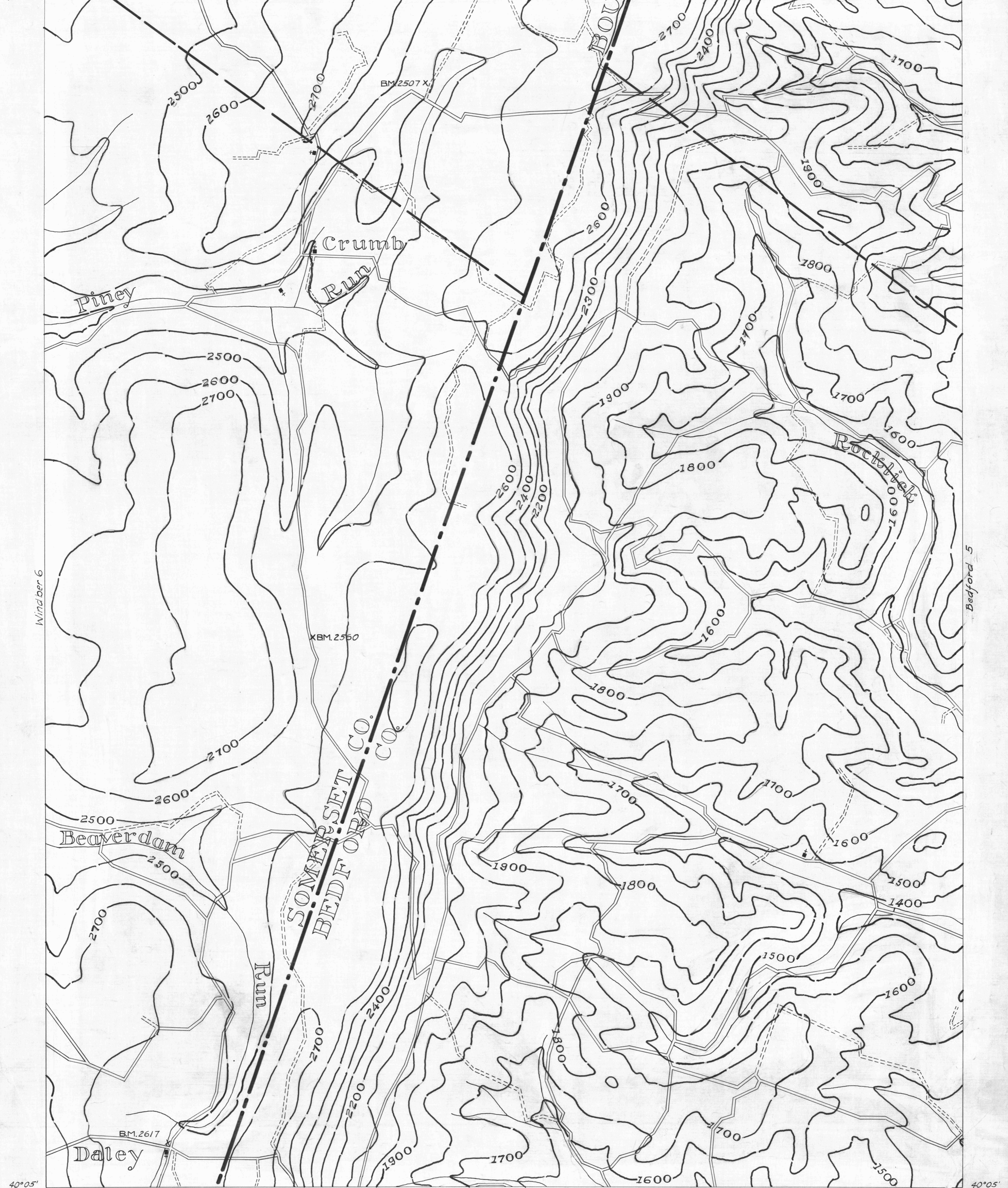


Windber 3 78°45' 40°10' Bedford 1

● ACTIVE OIL WELL * ACTIVE OIL & GAS WELL
 ◐ ABANDONED OIL WELL * ABANDONED OIL & GAS WELL
 * ACTIVE GAS WELL ◊ DRY HOLE
 * ABANDONED GAS WELL ○ NO RECORD

— SURFACE CONTOURS — COUNTY LINES
 — TOWNSHIP LINES — BOROUGH LINES
 — COAL CONTOURS — CROP LINES—SEAM BEING MINED
 — CROP LINES—SEAMS NOT BEING MINED



Windber 9 78°45' 40°05' Bedford 8

— DRIFT OPENING
 — SLOPE OPENING
 ■ SHAFTS
 ▨ BARRIER PILLARS

0 1 2 MILES

BEDFORD SHEET NO. 4
 W. P. A. PROJECT N° 25734