

Smicksburg 9 79°00' 40°45' 78°55' Barnesboro 8

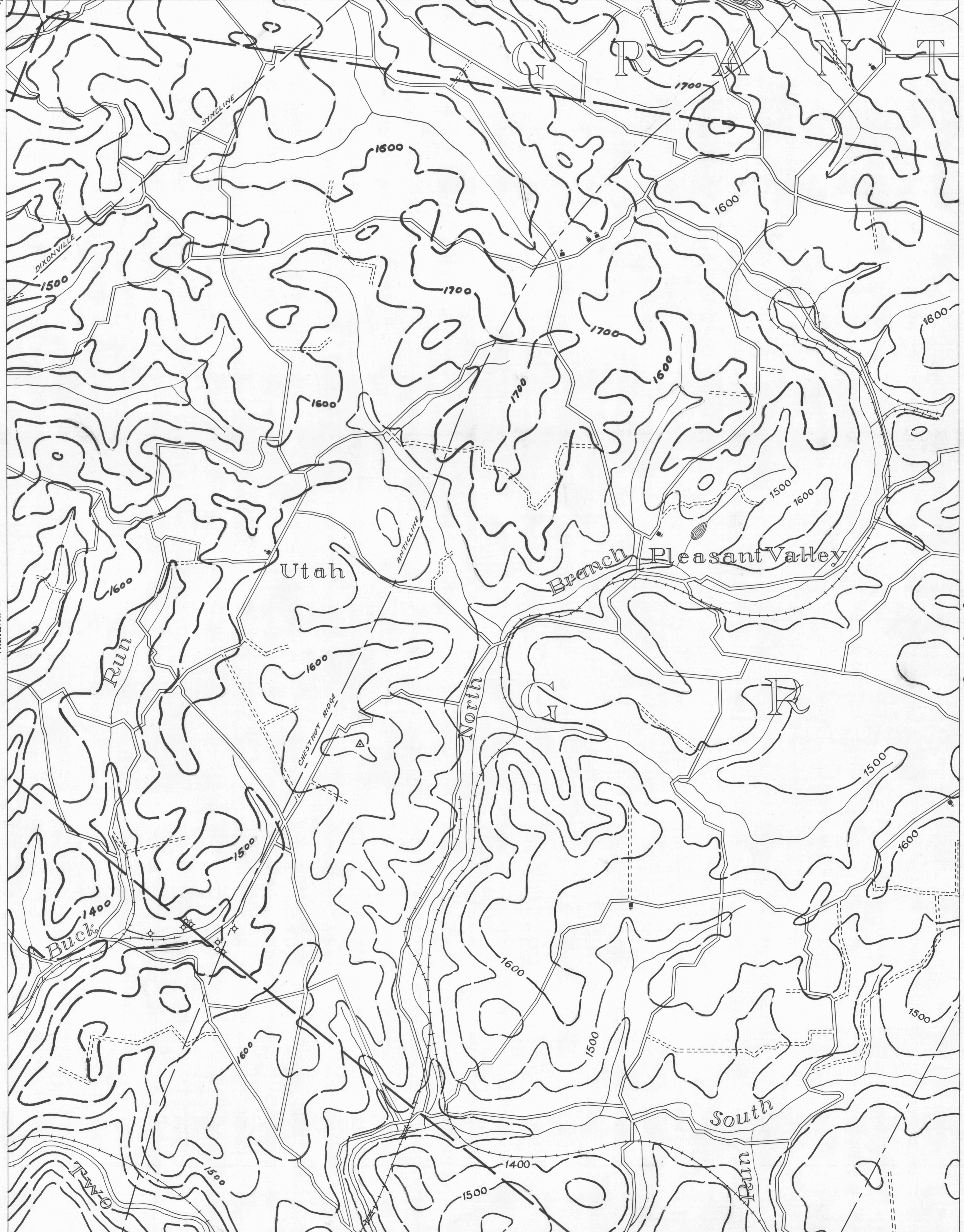
● ACTIVE OIL WELL  
 ○ ABANDONED OIL WELL  
 \* ACTIVE GAS WELL  
 \* ABANDONED GAS WELL

\* ACTIVE OIL & GAS WELL  
 \* ABANDONED OIL & GAS WELL  
 ◇ DRY HOLE  
 ○ NO RECORD

— COUNTY LINES  
 - - - TOWNSHIP LINES  
 - - - BOROUGH LINES

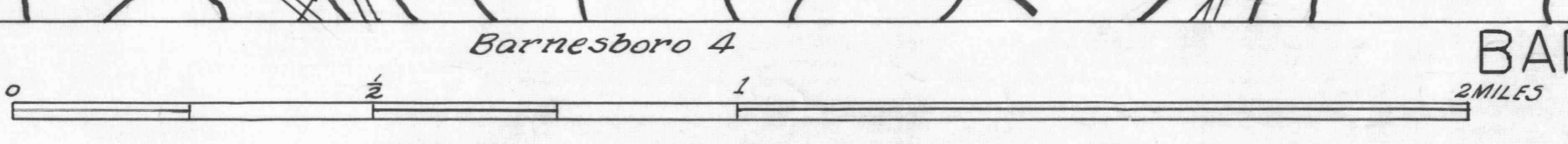
380 COAL CONTOURS  
 - - - CROP LINES - SEAM BEING MINED  
 - - - CROP LINES - SEAMS NOT BEING MINED

Punxsutawney 7



Indiana 3 79°00' 40°40' Indiana 6

Y DRIFT OPENING  
 Z SLOPE OPENING  
 □ SHAFTS  
 ■ BARRIER PILLAR



W.P.A. PROJECT NO. 19666

BARNESBORO SHEET NO. 1

78°55' Barnesboro 5