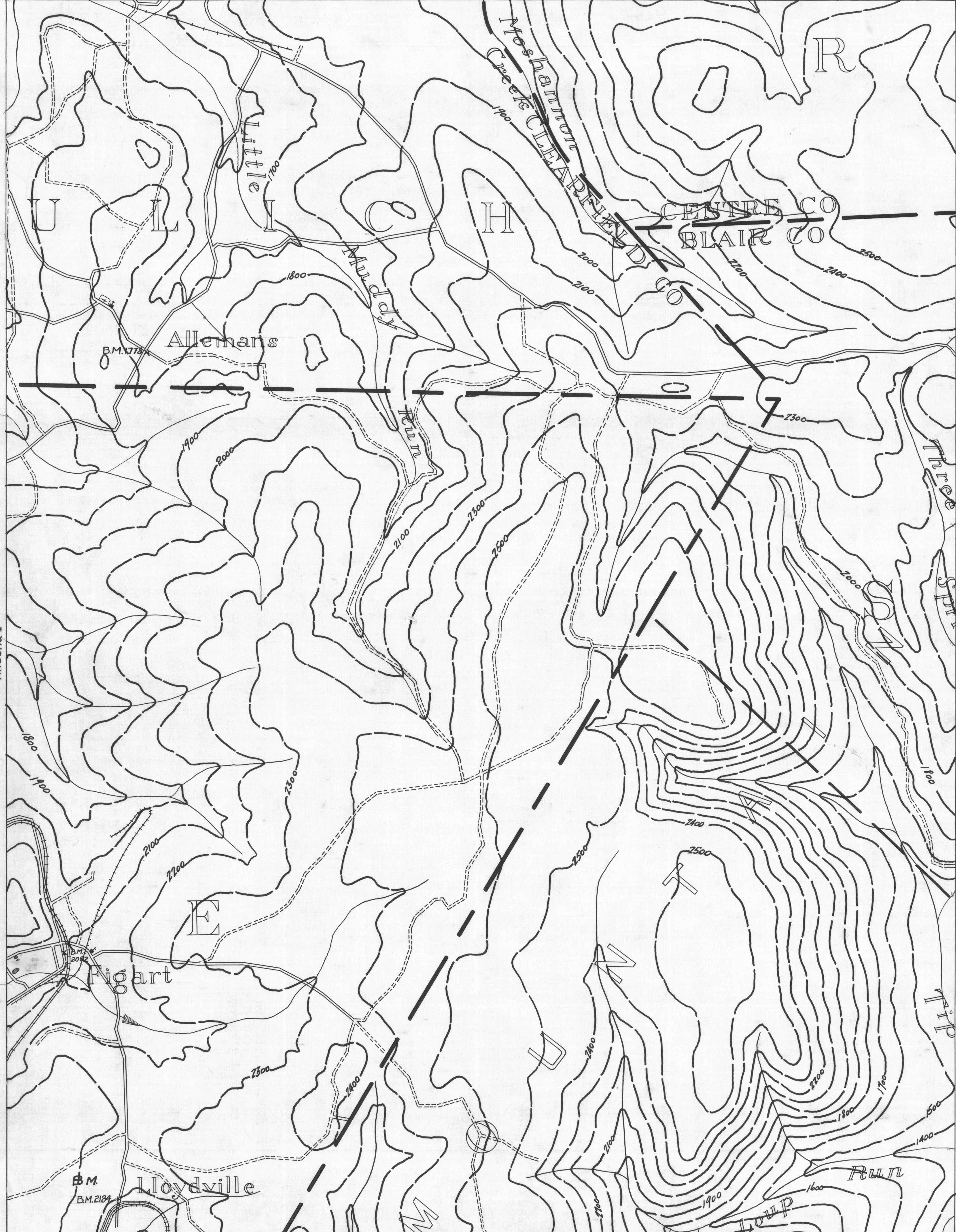


HOULTZDALE 7 78° 20' 40° 45'  
 HOULTZDALE 8 78° 20' 40° 45'  
 HOULTZDALE 9 78° 20' 40° 45'

- ACTIVE OIL WELL
- ABANDONED OIL WELL
- ⊛ ACTIVE GAS WELL
- ⊛ ABANDONED GAS WELL

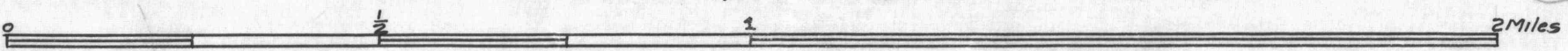
- \* ACTIVE OIL & GAS WELL
- \* ABANDONED OIL & GAS WELL
- DRY HOLE
- NO RECORD

- COUNTY LINES
- TOWNSHIP LINES
- BOROUGH LINES
- SURFACE CONTOURS
- COAL CONTOURS
- CRAP LINES - SEAM - BEING MINED
- CRAP LINES - SEAM - NOT BEING MINED



ALTOONA 1 78° 25' 40° 40'  
 ALTOONA 2 78° 25' 40° 40'  
 ALTOONA 3 78° 25' 40° 40'  
 ALTOONA 4 78° 25' 40° 40'  
 ALTOONA 5 78° 25' 40° 40'  
 ALTOONA 6 78° 25' 40° 40'

- DRIFT OPENING
- SLOPE OPENING
- SHAFTS
- ▨ BARRIER PILLAR



W.P.A. PROJECT NO-19666

ALTOONA SHEET No 2