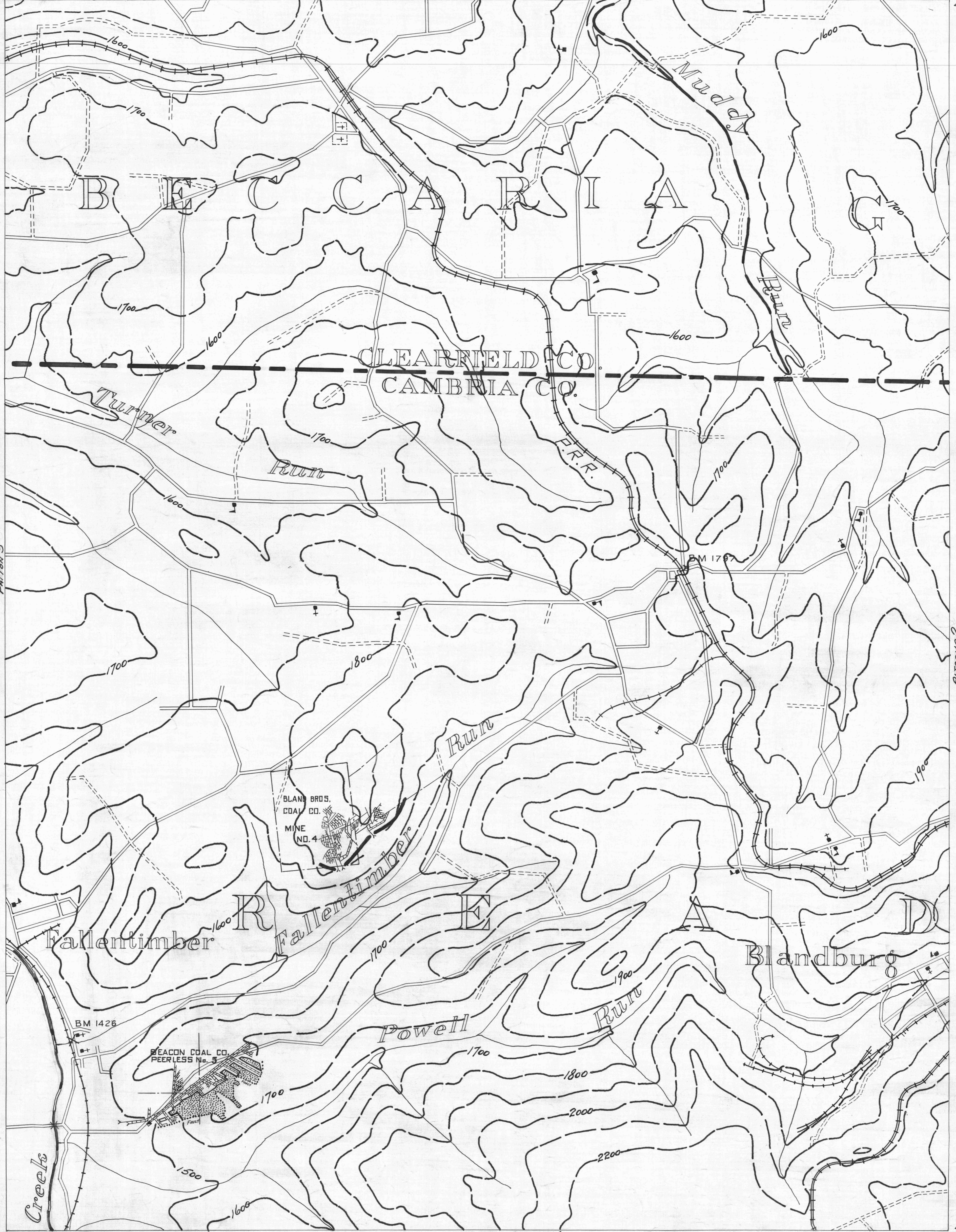


CORNWALL 9
 40°45'
 78°30'
 HOUTZDALE 7
 COUNTY LINES
 TOWNSHIP LINES
 BOROUGH LINES
 SURFACE CONTOURS
 980 UK
 COAL CONTOURS
 CROP LINES-SEAM BEING MINED
 CROP LINES-SEAMS NOT BEING MINED
 78°25'
 HOUTZDALE 8
 40°45'

- ACTIVE OIL WELL
- ABANDONED OIL WELL
- ★ ACTIVE GAS WELL
- ABANDONED GAS WELL
- ★ ACTIVE OIL & GAS WELL
- ABANDONED OIL & GAS WELL
- ◇ DRY HOLE
- NO RECORD



PATTON 5
 40°40'
 78°30'
 PATTON 6
 DRIFT OPENING
 SLOPE OPENING
 SHAFTS
 BARRIER PILLAR
 0 1 2 3 4 5 6 7 8 9 10
 WPA. PROJECT NO.4483
 ALTOONA 4
 ALTOONA SHEET No. 1
 Upper Kittanning seam - UK
 40°40'
 ALTOONA 5
 78°25'