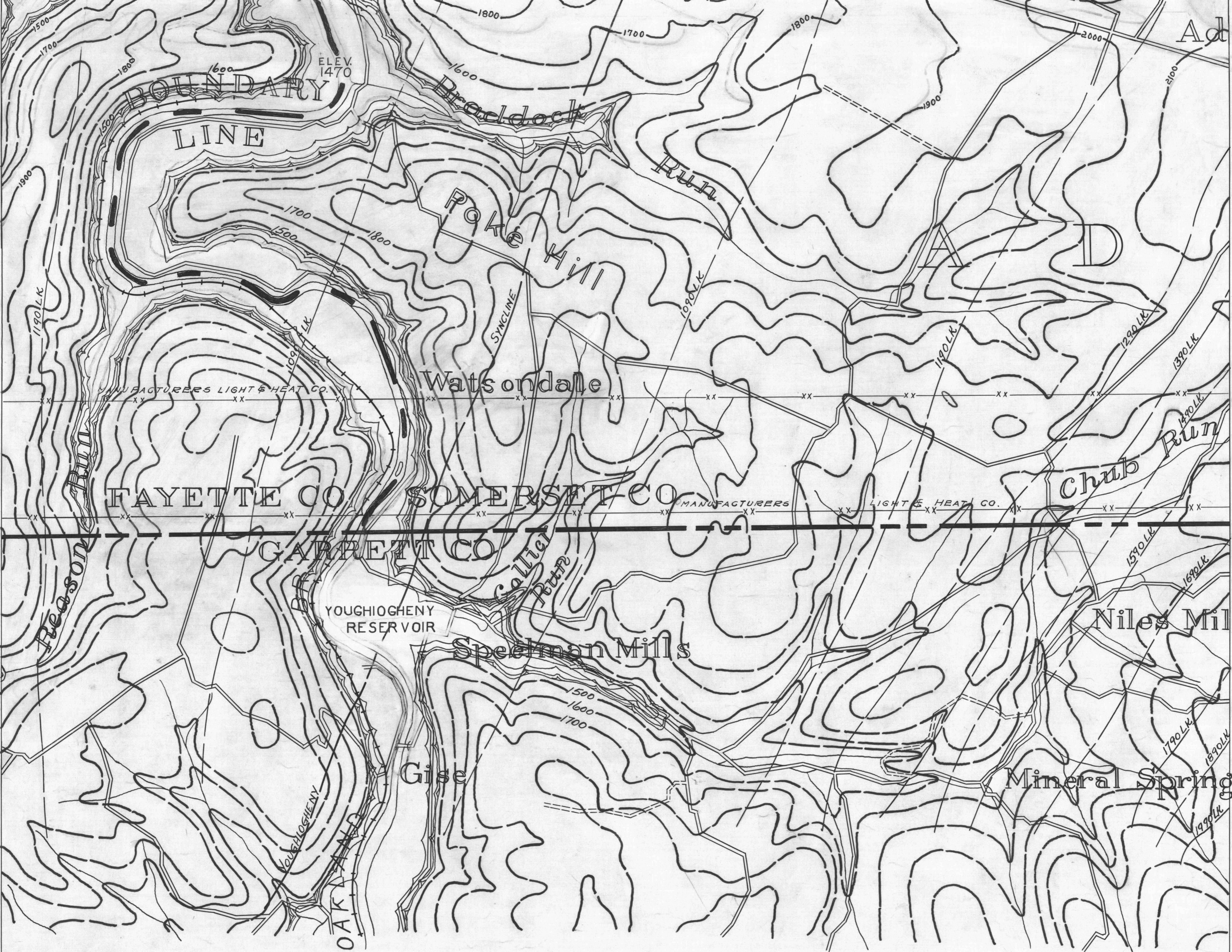


CONFLUENCE 7 39° 45' 79° 25'

| | | | |
|----------------------|----------------------------|--------------------|--------------------------------------|
| ● ACTIVE OIL WELL | * ACTIVE OIL & GAS WELL | — COUNTY LINES | — 980 COAL CONTOURS |
| ● ABANDONED OIL WELL | * ABANDONED OIL & GAS WELL | — TOWNSHIP LINES | — CROP LINES - SEAM BEING MINED |
| * ACTIVE GAS WELL | ○ DRY HOLE | — BOROUGH LINES | — CROP LINES - SEAMS NOT BEING MINED |
| * ABANDONED GAS WELL | ○ NO RECORD | — SURFACE CONTOURS | |

CONFLUENCE 8



NOTE: CONTOURS MARKED (LK) ARE FOR LOWER ELEVATIONS OF POTTSVILLE FORMATION TAKEN FROM U.S. GEOLOGY. KITTANNING SEAM AND ARE DERIVED BY ADDING 90 FT. TO THE POTTSVILLE FORMATION.

ACCIDENT 4 39° 40' 79° 25'

| | |
|---|-----------------|
| — | DRIFT OPENING. |
| — | SLOPE OPENING. |
| □ | SHAFTS. |
| ■ | BARRIER PILLAR. |

ACCIDENT - 5
 0 1 2 MILES.
 W.P.A. PROJECT NO. 19666.

Surf. Contours Redrawn for Reservoir

ACCIDENT SHEET No. 2. LK.

ACCIDENT 3 39° 40' 79° 25'