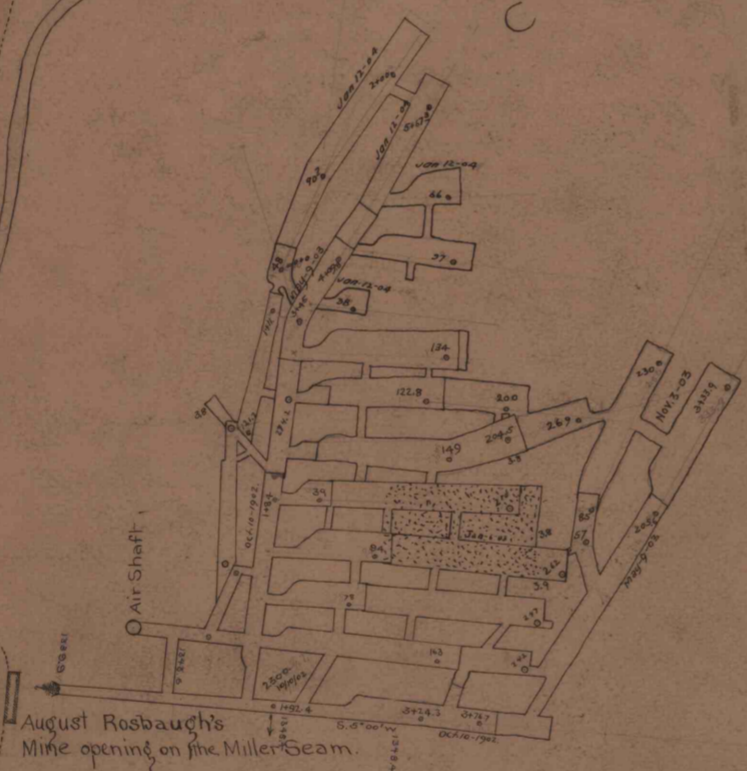
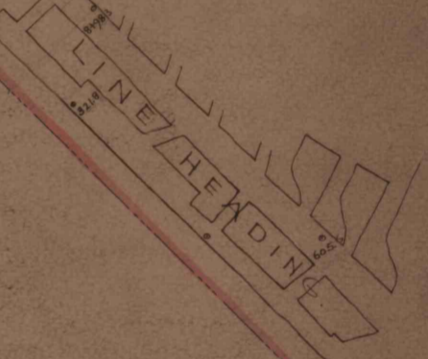
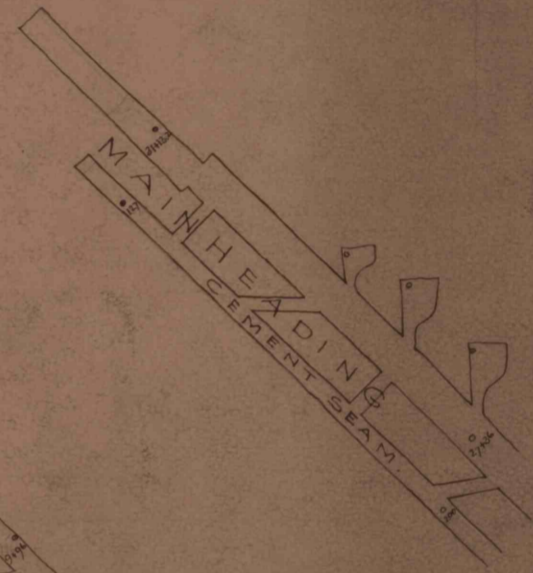


CONEMAUGH COAL COMPANY'S MINE WORKINGS (abandoned).

COMPANY.

IRON

CAMBRIA



August Rosbaugh's Mine opening on the Miller Seam.

Air Shaft

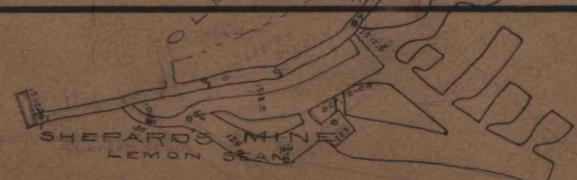
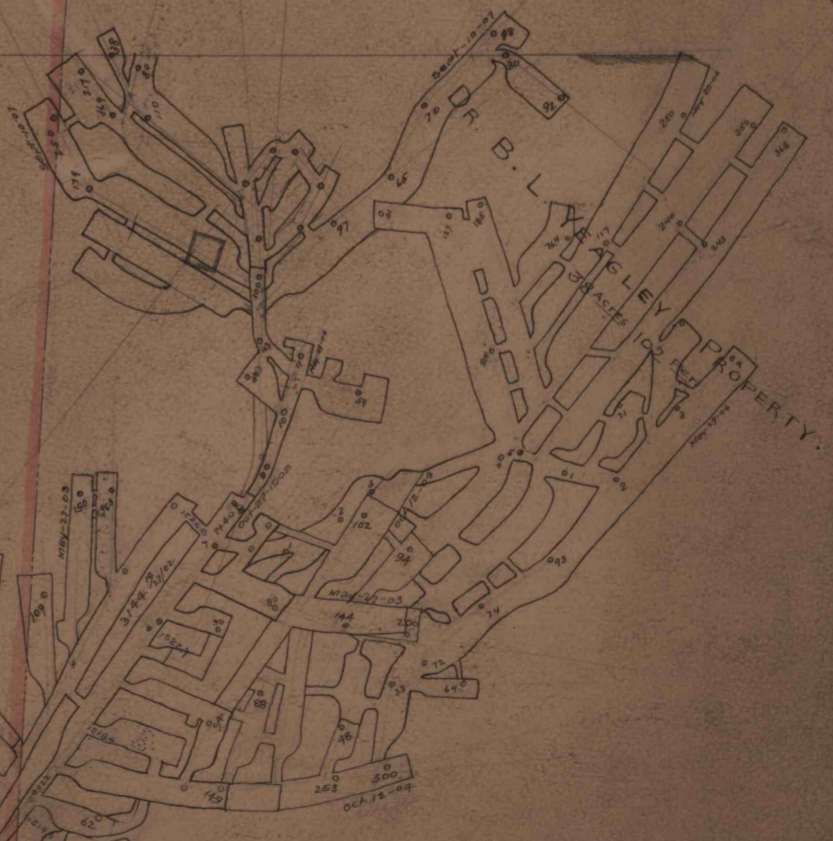
PUBLIC ROAD

CLAREBARD RUN

Anthony opening

Air Shaft

Drill Hole in Large Stone by C.P.C.



Scale - 100' = 1 inch

SB-1