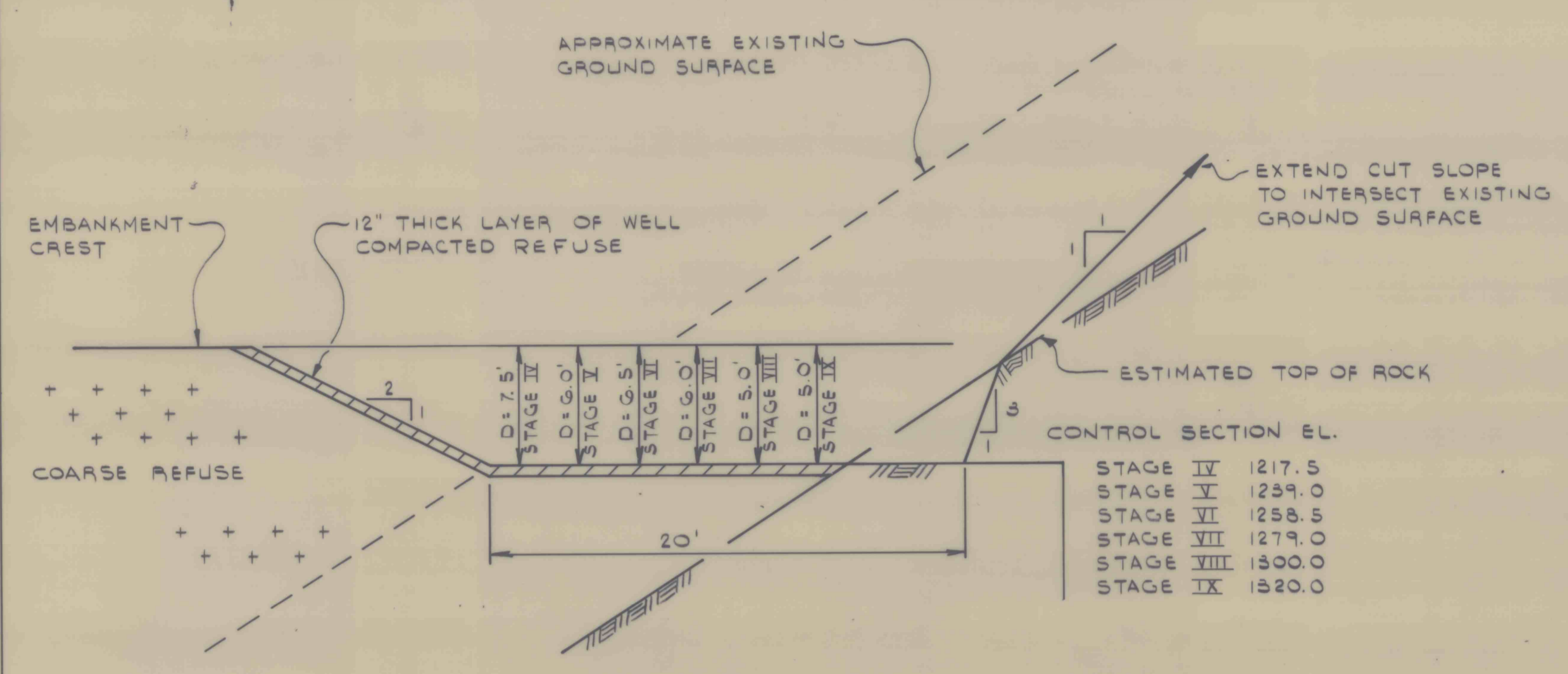
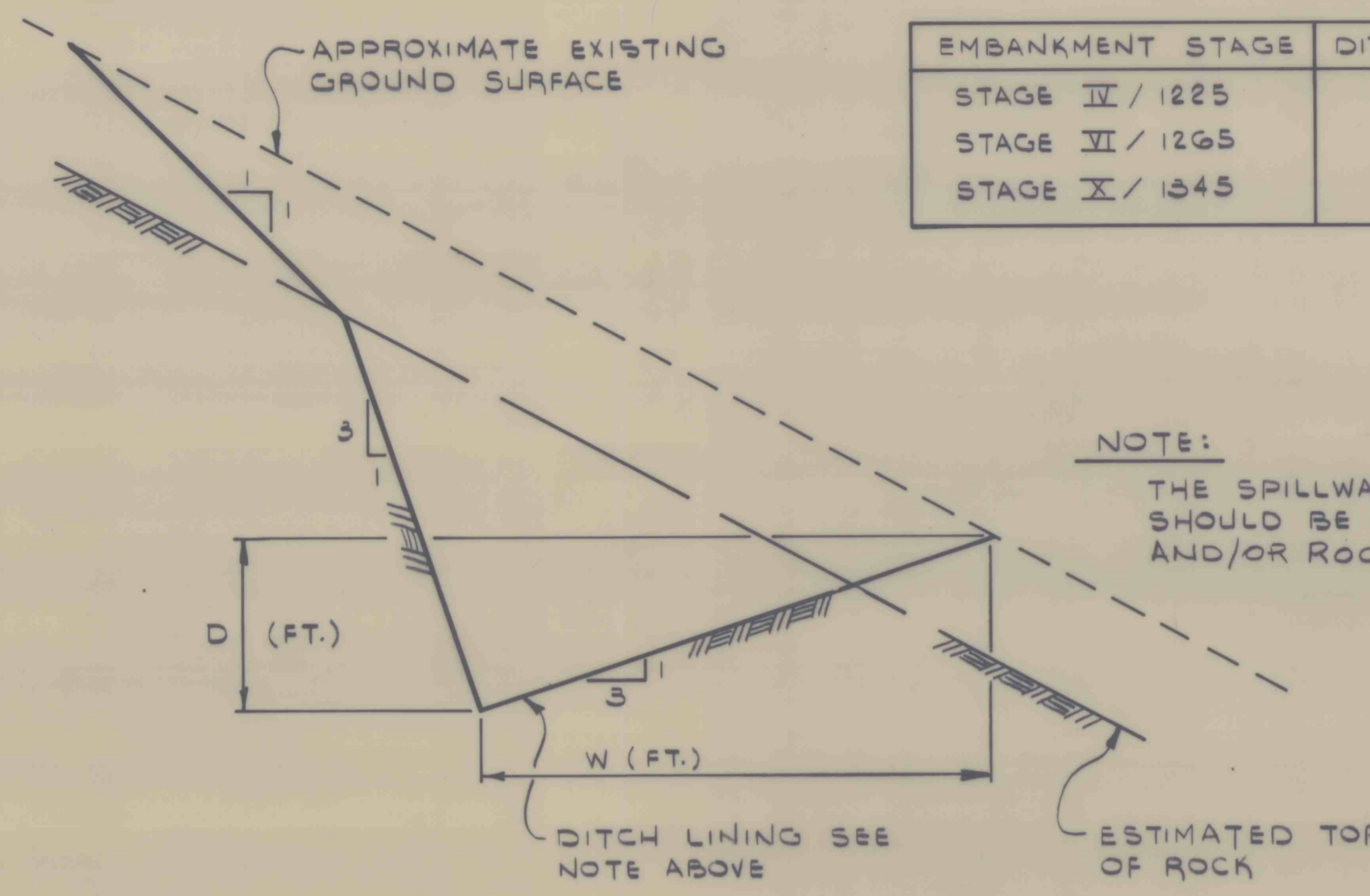


DATE	REVISION RECORD	DR. CR.
5-84	CHANGED DETAIL 17	B.S.R.R.
8-84	CHANGED DETAIL 18	B.S.R.R.

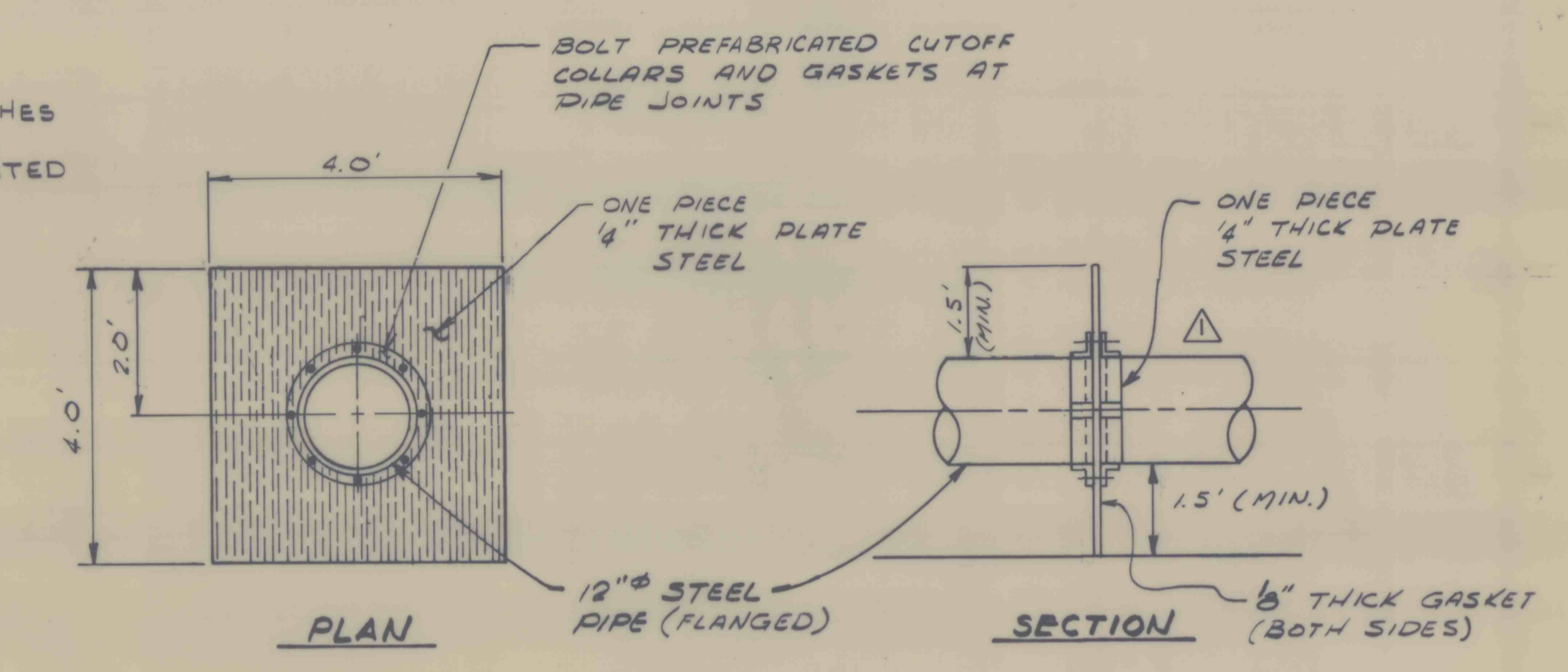
EMBANKMENT STAGE	DITCH DEPTH (FT.)	DITCH WIDTH (FT.)
STAGE IV / 1225	6.5	16.5
STAGE VI / 1265	6.0	15.0
STAGE IX / 1345	5.0	15.0



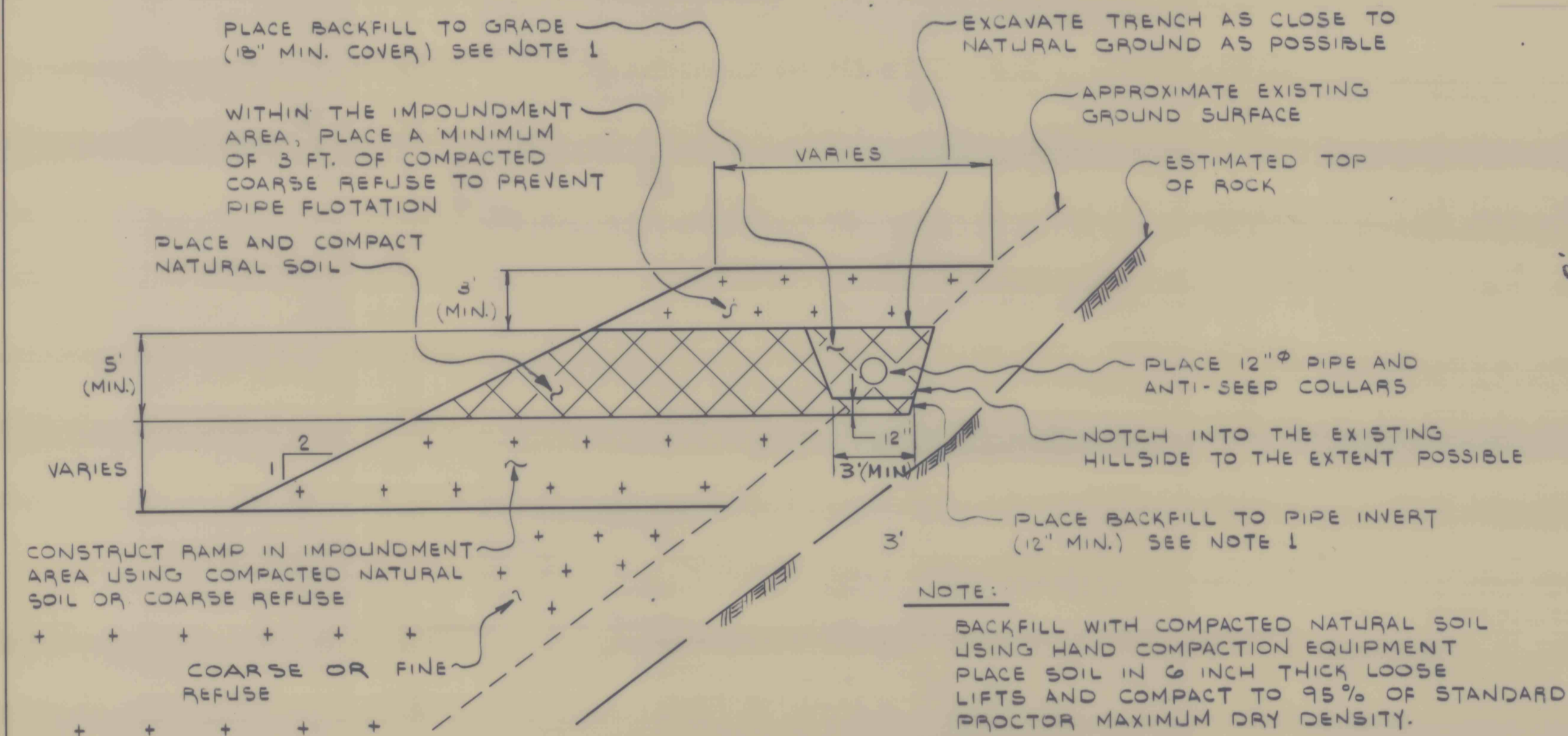
DETAIL 15
EMERGENCY SPILLWAYS
N.T.S.



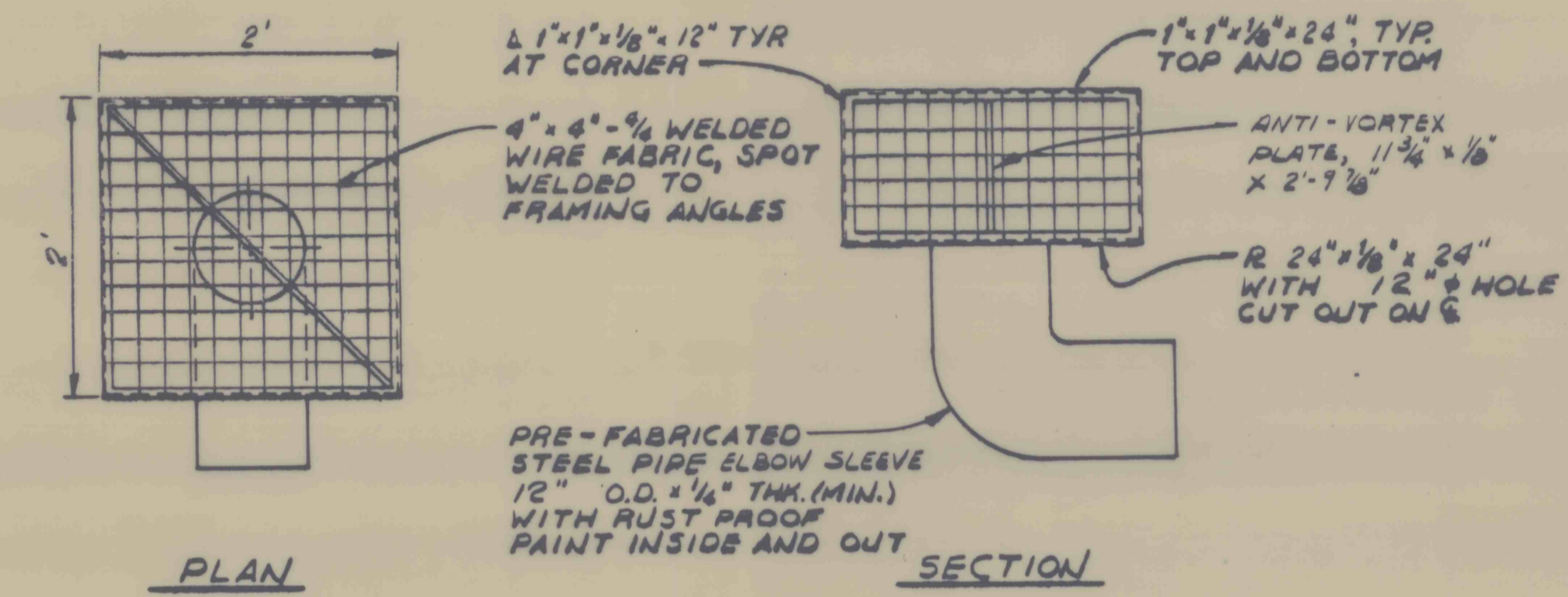
DETAIL 16
SPILLWAY OUTLET DITCHES
N.T.S.



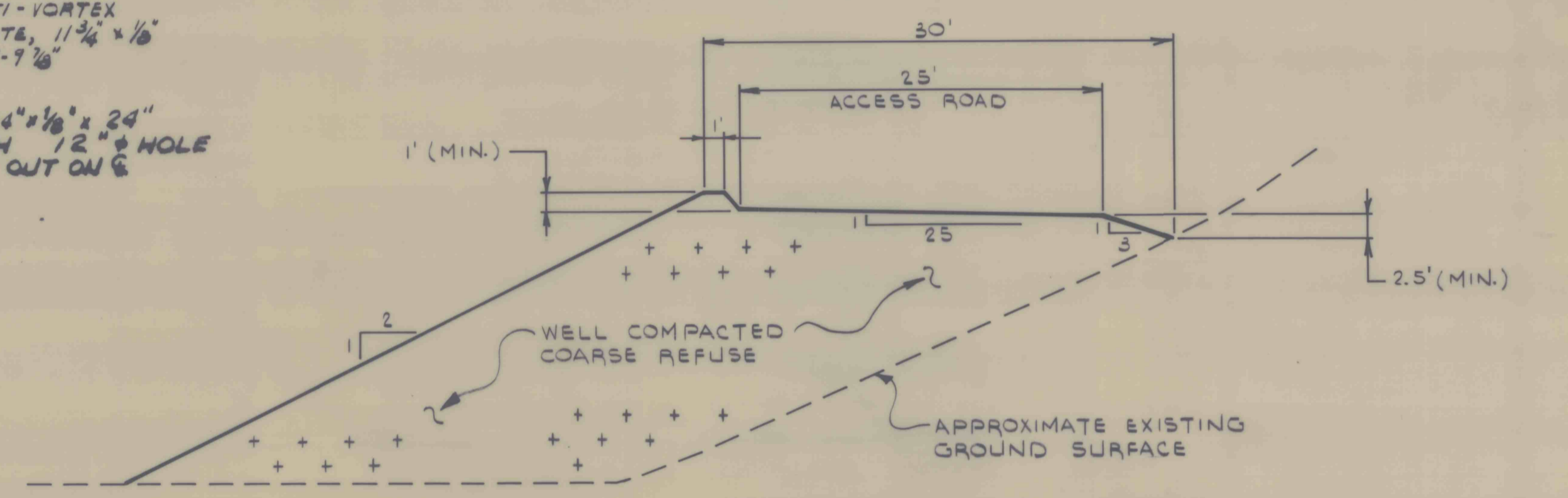
DETAIL 17
DECANT ANTI-SEEP COLLAR
N.T.S.



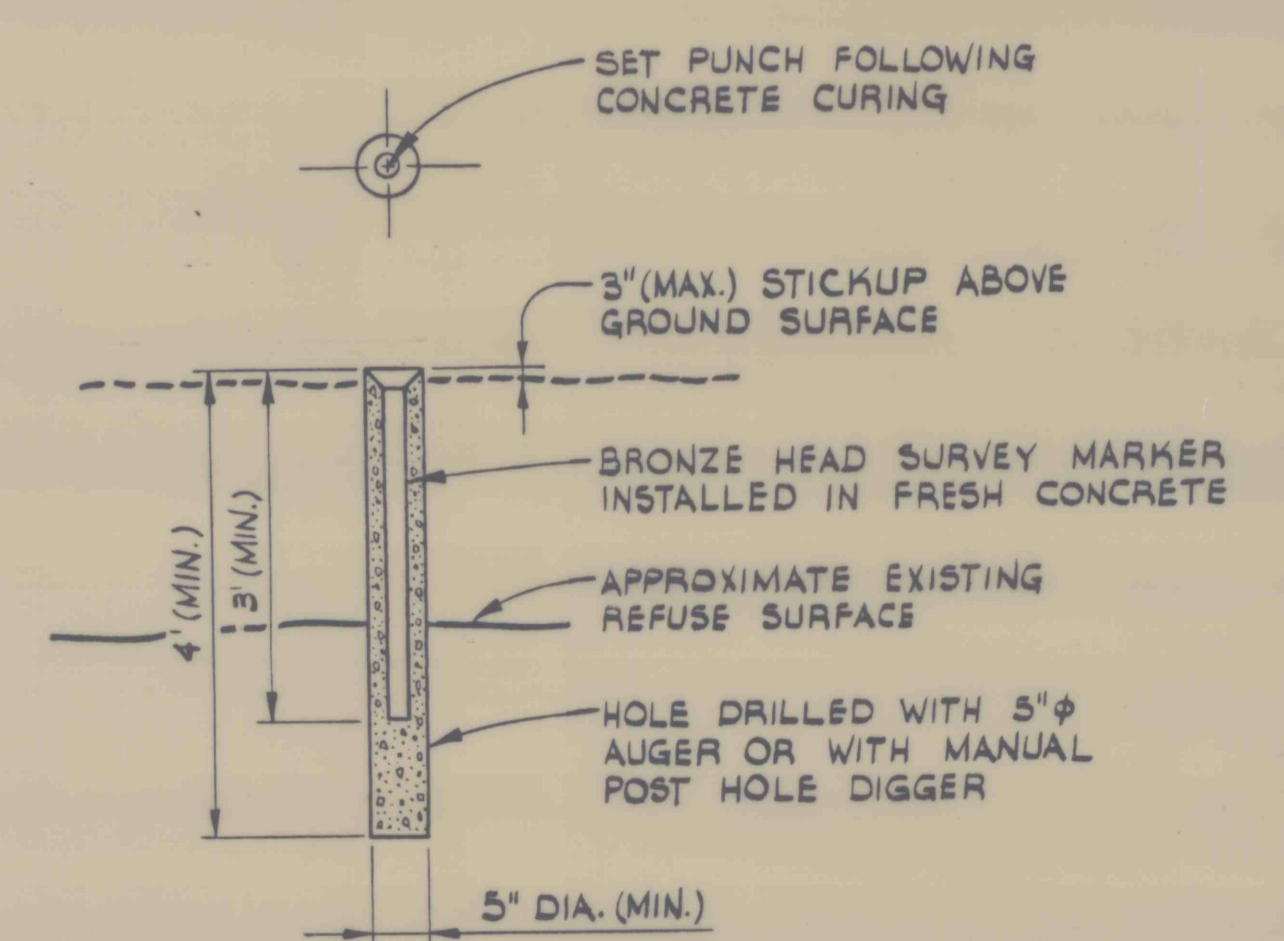
DETAIL 21
OPERATIONAL DECANT PIPE INSTALLATION
N.T.S.



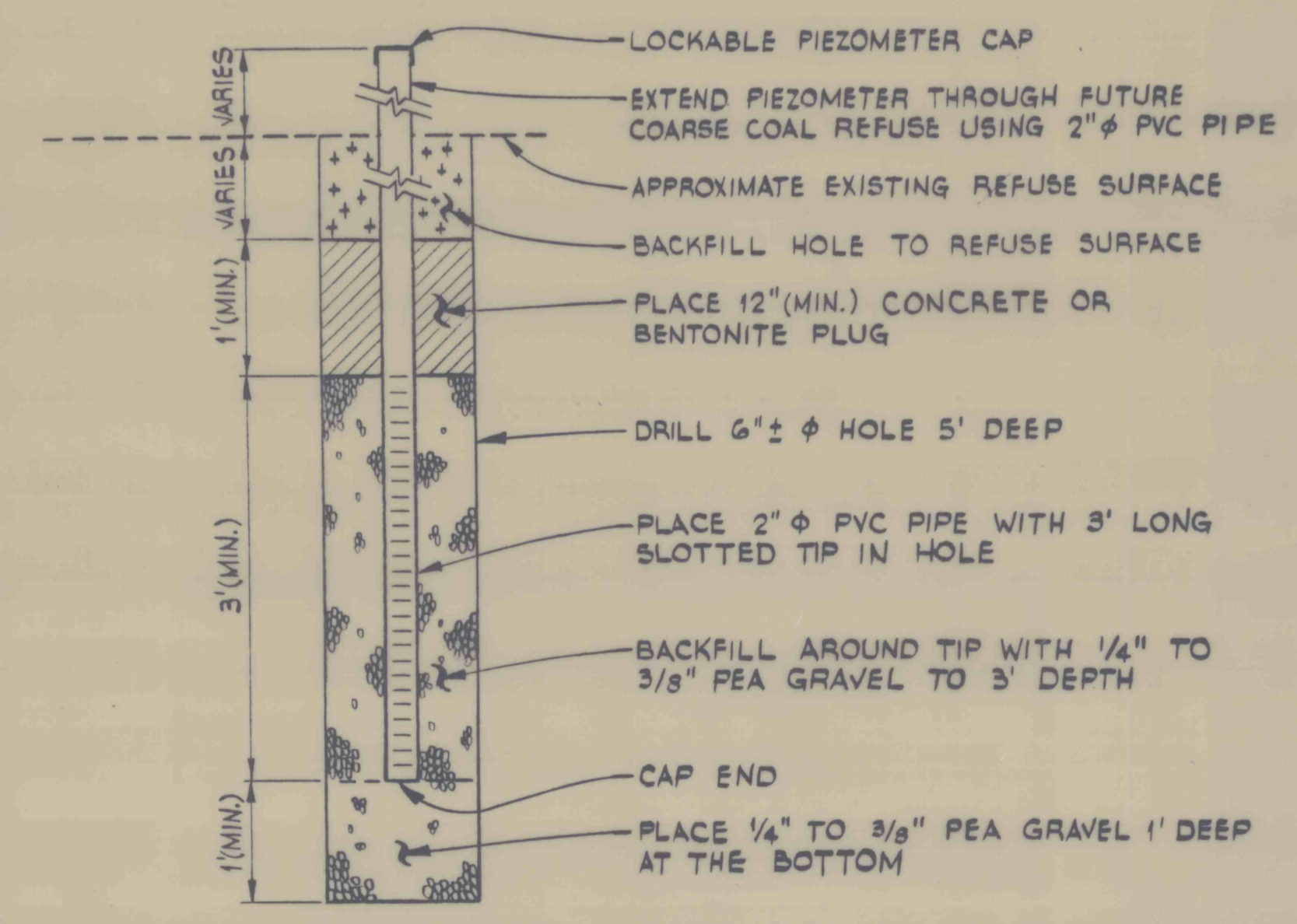
DETAIL 22
REMOVABLE TRASH RACK PERMANENT DECANT
N.T.S.



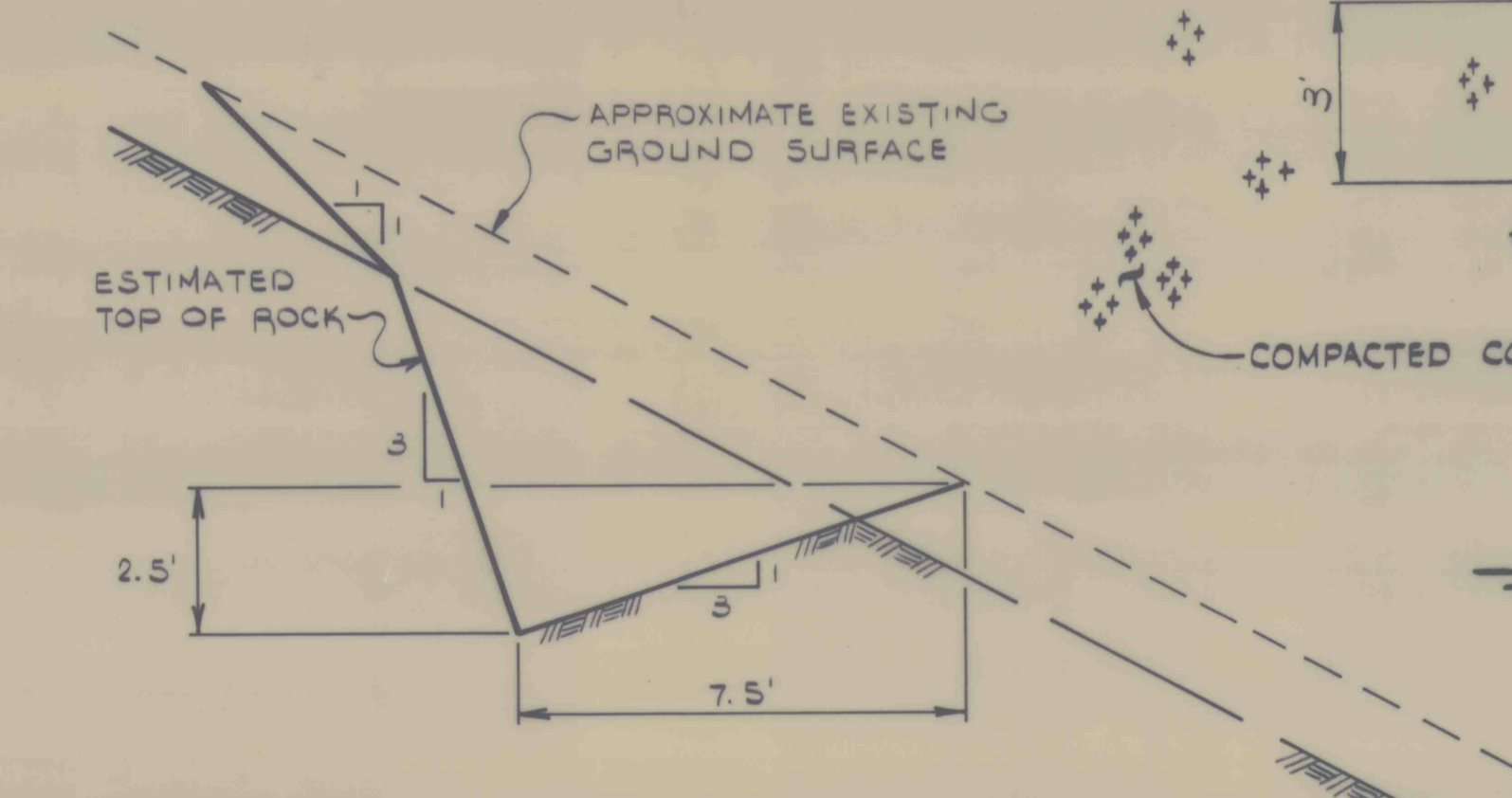
DETAIL 20
HAUL ROAD TO BUTTRESS
N.T.S.



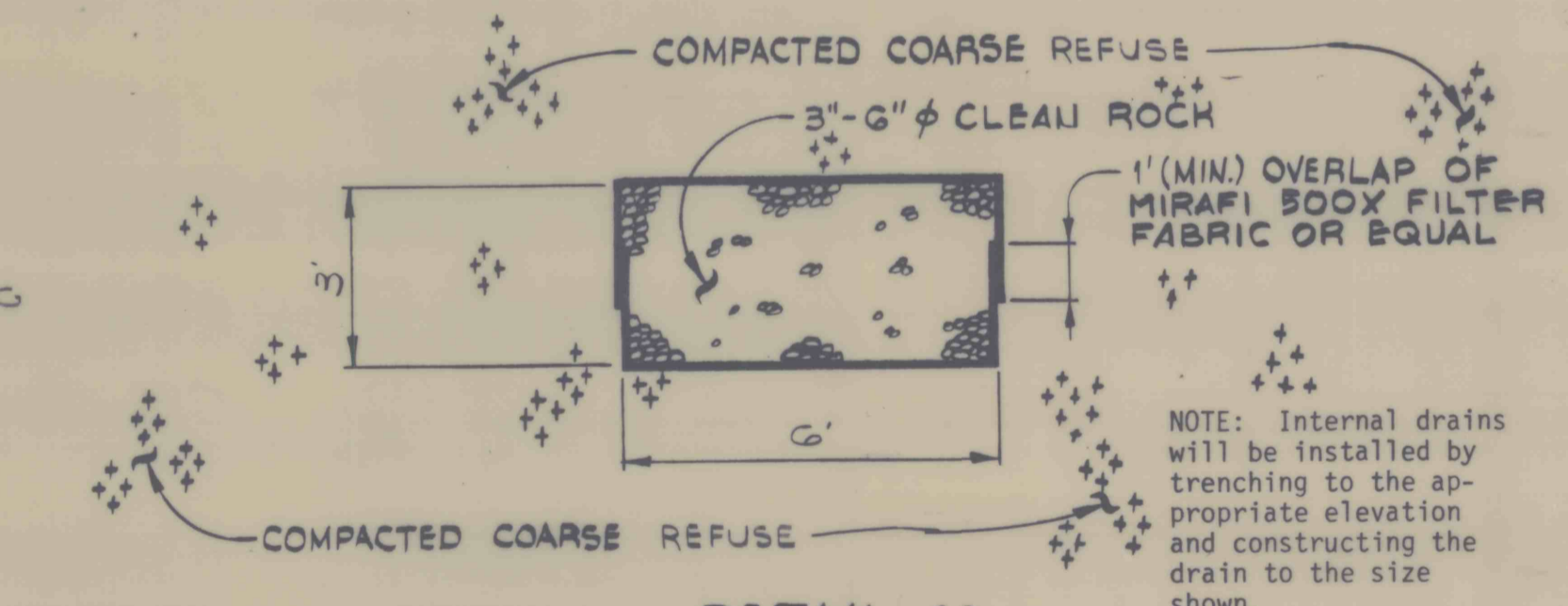
DETAIL 18
SURVEY MONUMENT
N.T.S.



DETAIL 19
PIEZOMETER INSTALLATION
N.T.S.



DETAIL 24
TEMPORARY BLACKWATER DITCH
N.T.S.



DETAIL 23
INTERNAL DRAIN
N.T.S.

NOTE:
NO EROSION PROTECTION
REQUIRED

SRW ASSOCIATES INC.
SCALE: AS NOTED APPROVED BY: DRAWN BY: B. SNYDER
DATE: FEB. 22, 1984 CHECKED BY: ALM
BETHLEHEM MINES CORPORATION
WEST VIRGINIA DIVISION
BOONE NO. 131 MINE
EXISTING COAL REFUSE DISPOSAL FACILITY
VAN, WEST VIRGINIA
SHEET NUMBER 12 OF 13
DRAWING NUMBER
83155 - E11

FILE 12-5-125