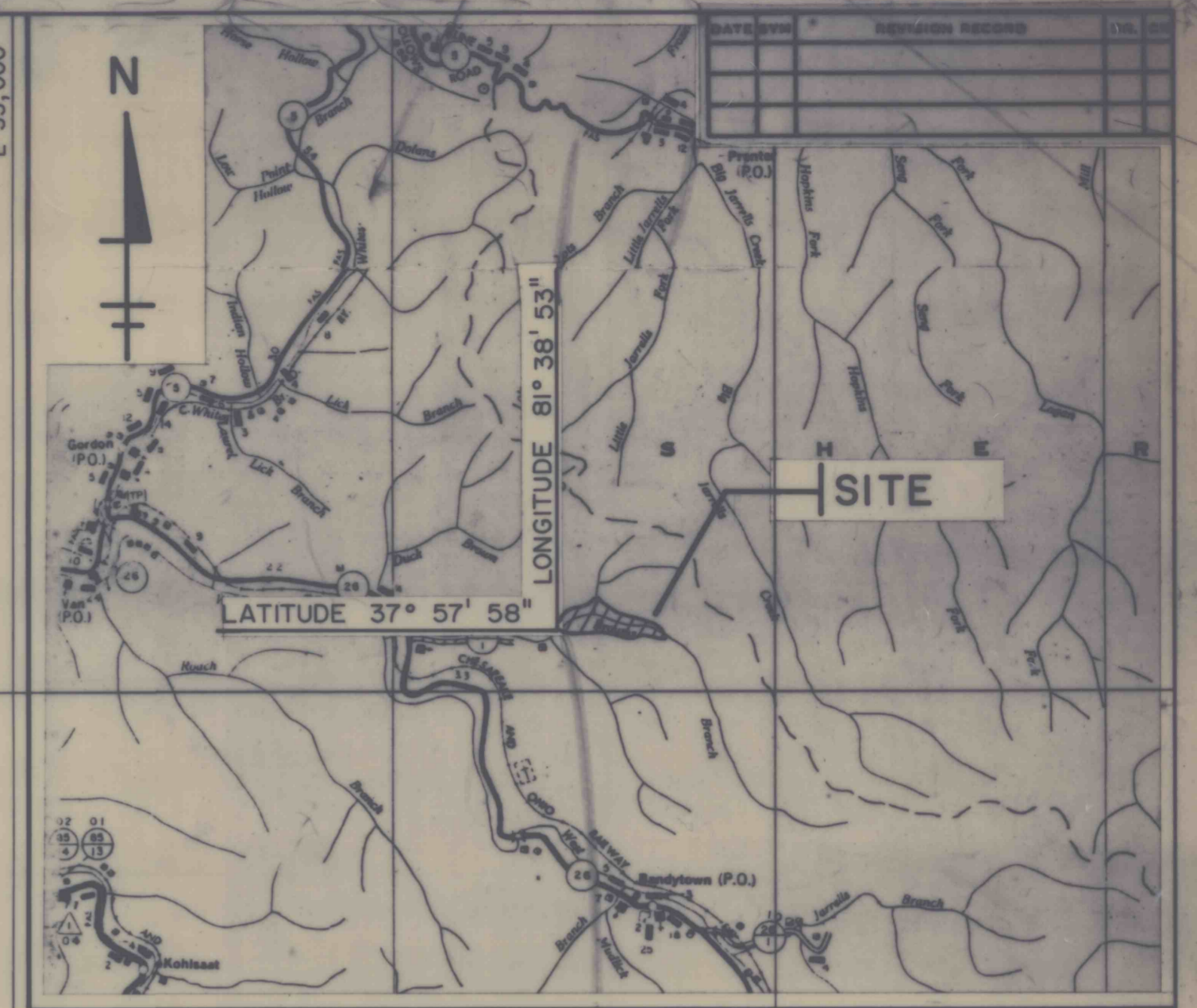
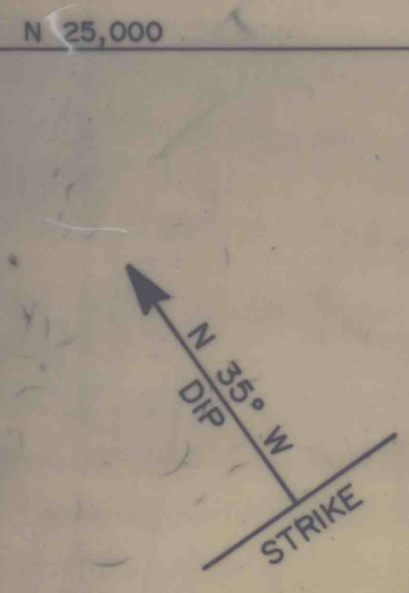




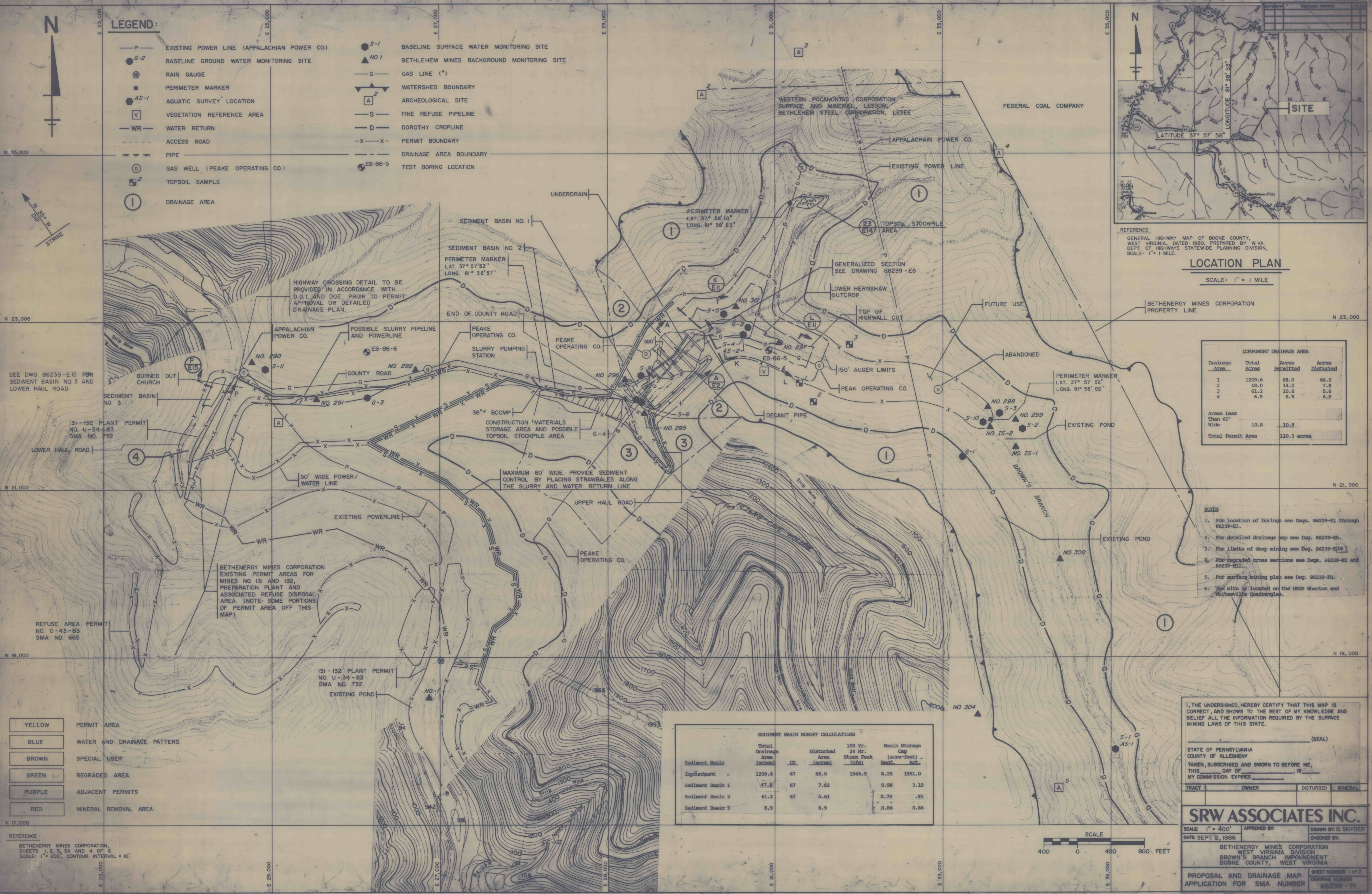
**LEGEND:**

- P — EXISTING POWER LINE (APPALACHIAN POWER CO.)
- G-2 BASELINE GROUND WATER MONITORING SITE
- ⊗ RAIN GAUGE
- PERIMETER MARKER
- AS-1 AQUATIC SURVEY LOCATION
- V VEGETATION REFERENCE AREA
- WR — WATER RETURN
- - - ACCESS ROAD
- — — PIPE
- ⊙ GAS WELL (PEAKE OPERATING CO.)
- 2 TOPSOIL SAMPLE
- ⊙ I DRAINAGE AREA
- S-1 BASELINE SURFACE WATER MONITORING SITE
- ▲ NO. 1 BETHLEHEM MINES BACKGROUND MONITORING SITE
- G — GAS LINE (")
- W — WATERSHED BOUNDARY
- A ARCHEOLOGICAL SITE
- S — FINE REFUSE PIPELINE
- D — DOROTHY CROPLINE
- X - X - PERMIT BOUNDARY
- - - DRAINAGE AREA BOUNDARY
- EB-86-5 TEST BORING LOCATION



REFERENCE:  
GENERAL HIGHWAY MAP OF BOONE COUNTY,  
WEST VIRGINIA, DATED 1980, PREPARED BY W.VA.  
DEPT. OF HIGHWAYS STATEWIDE PLANNING DIVISION,  
SCALE: 1" = 1 MILE.

**LOCATION PLAN**  
SCALE: 1" = 1 MILE



SEE DWG 86239-E15 FOR  
SEDIMENT BASIN NO. 3 AND  
LOWER HAUL ROAD.

131-132 PLANT PERMIT  
NO. U-34-83  
SMA NO. 732

REFUSE AREA PERMIT  
NO. O-43-83  
SMA NO. 665

131-132 PLANT PERMIT  
NO. U-34-83  
SMA NO. 732

- YELLOW PERMIT AREA
- BLUE WATER AND DRAINAGE PATTERS
- BROWN SPECIAL USER
- GREEN REGRADED AREA
- PURPLE ADJACENT PERMITS
- RED MINERAL REMOVAL AREA

REFERENCE:  
BETHENERGY MINES CORPORATION,  
SHEETS 1, 2, 3, 3A AND 4 OF 6  
SCALE: 1" = 200', CONTOUR INTERVAL = 10'.

COMPONENT DRAINAGE AREA			
Drainage Area	Total Acres	Acres Permitted	Acres Disturbed
1	1209.6	68.0	66.0
2	48.0	14.0	7.8
3	61.2	10.6	5.6
4	6.9	6.9	6.9
Areas Less Than 60' Wide		10.8	10.8
Total Permit Area		110.3 acres	

- NOTES**
- For location of borings see Dwg. 86239-E1 through 86239-E3.
  - For detailed drainage map see Dwg. 86239-E5.
  - For limits of deep mining see Dwg. 86239-E16.
  - For regraded cross sections see Dwg. 86239-E2 and 86239-E11.
  - For surface mining plan see Dwg. 86239-P2.
  - The site is located on the USGS Wharton and Whitesville Quadrangles.

**SEDIMENT BASIN RUNOFF CALCULATIONS**

Sediment Basin	Total Drainage Area (acres)	CN	Disturbed Area (acres)	100 Yr. Storm Peak (cfs)	Basin Storage Cap (acre-feet)	Regd. Act.
Impoundment	1209.6	67	66.0	1545.9	8.25	1551.0
Sediment Basin 1	47.8	67	7.82	0.98	0.98	3.19
Sediment Basin 2	61.2	67	5.61	0.70	0.70	.95
Sediment Basin 3	6.9	67	6.9	0.86	0.86	0.86

I, THE UNDERSIGNED, HEREBY CERTIFY THAT THIS MAP IS CORRECT, AND SHOWS TO THE BEST OF MY KNOWLEDGE AND BELIEF ALL THE INFORMATION REQUIRED BY THE SURFACE MINING LAWS OF THIS STATE.

(SEAL)  
STATE OF PENNSYLVANIA  
COUNTY OF ALLEGHENY  
TAKEN, SUBSCRIBED AND SWORN TO BEFORE ME,  
THIS \_\_\_\_\_ DAY OF \_\_\_\_\_, 19\_\_\_\_,  
MY COMMISSION EXPIRES \_\_\_\_\_, 19\_\_\_\_.

TRACT	OWNER	DISTURBED	MINERAL

**SRW ASSOCIATES INC.**  
SCALE: 1" = 400' APPROVED BY: \_\_\_\_\_ DRAWN BY: B. SNYDER  
DATE: SEPT. 2, 1986 CHECKED BY: \_\_\_\_\_  
BETHENERGY MINES CORPORATION  
WEST VIRGINIA DIVISION  
BROWN'S BRANCH IMPROVEMENT  
BOONE COUNTY, WEST VIRGINIA  
PROPOSAL AND DRAINAGE MAP SHEET NUMBER 1 of 2  
APPLICATION FOR SMA NUMBER 86239-P1 DRAINAGE NUMBER

