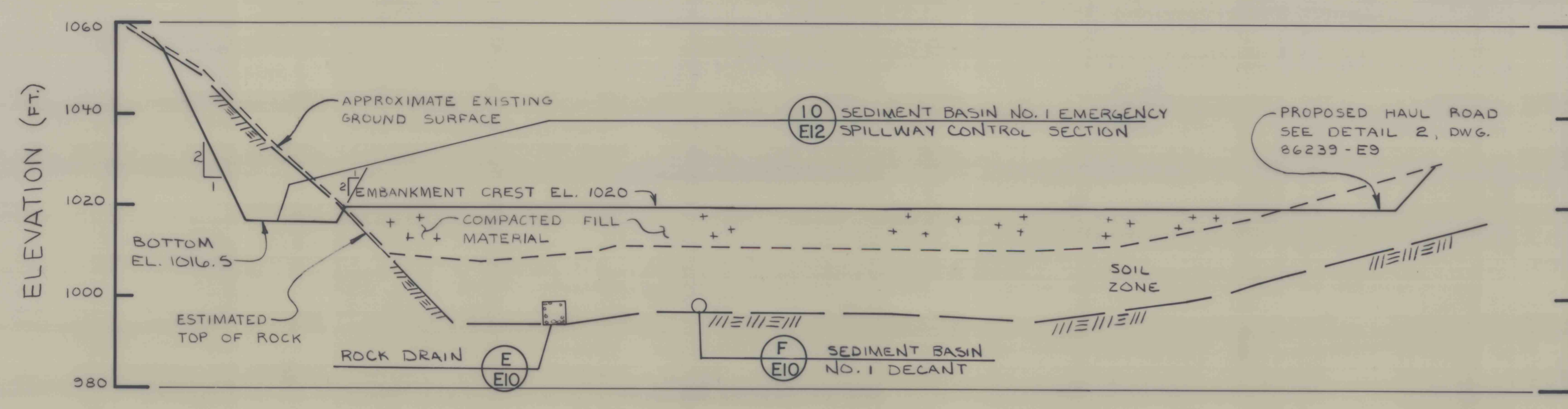
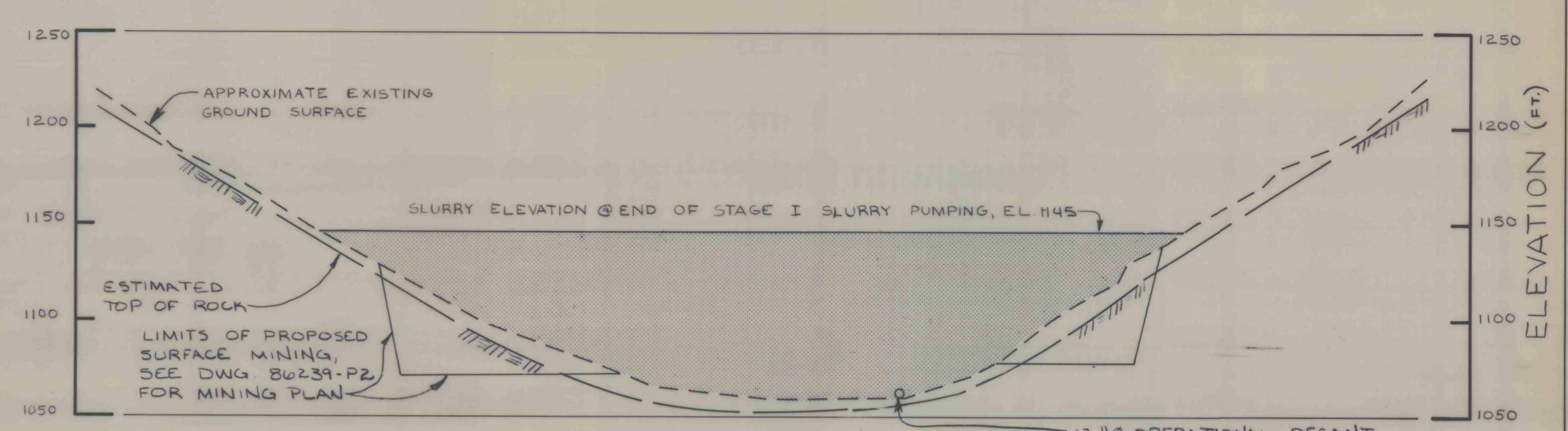


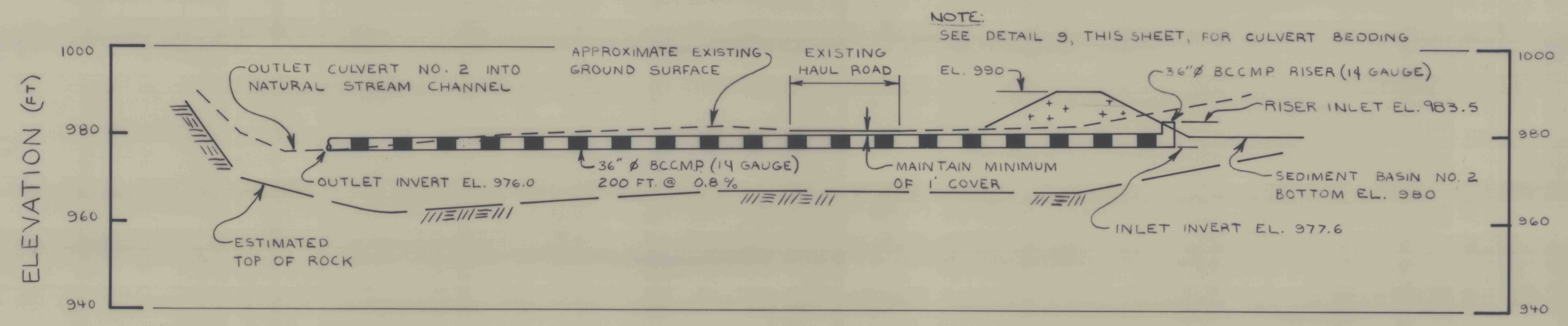
DATE	BY	REVISION	RECORD	DR.	CK.



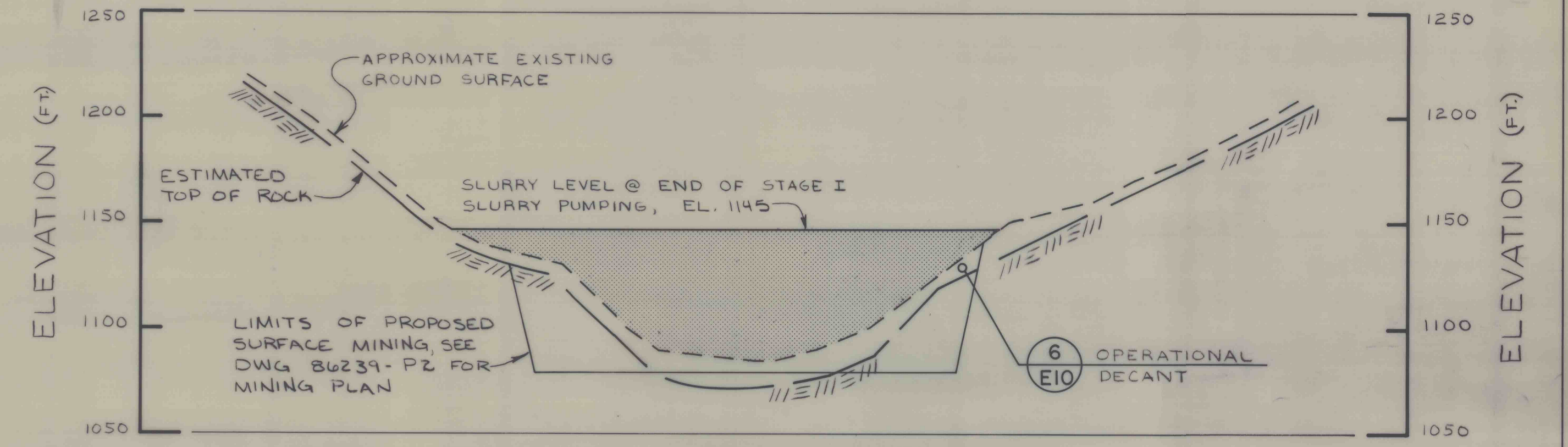
SECTION H-H  
 SEDIMENT BASIN NO. 1 EMBANKMENT CREST  
 SCALE: 1" = 20'



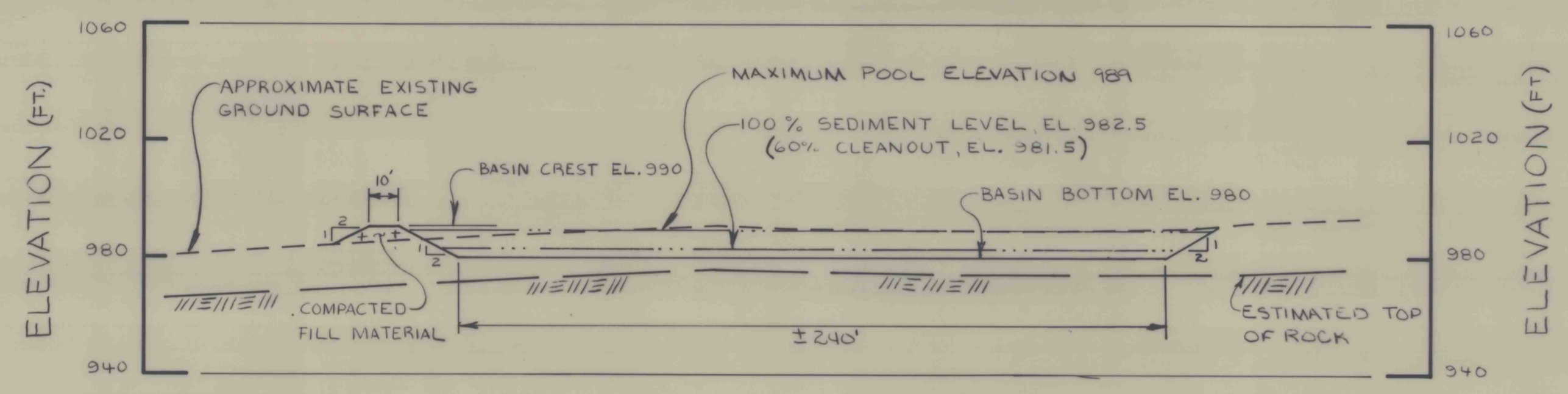
SECTION K-K  
 SECTION THROUGH IMPOUNDMENT  
 SCALE: 1" = 50'



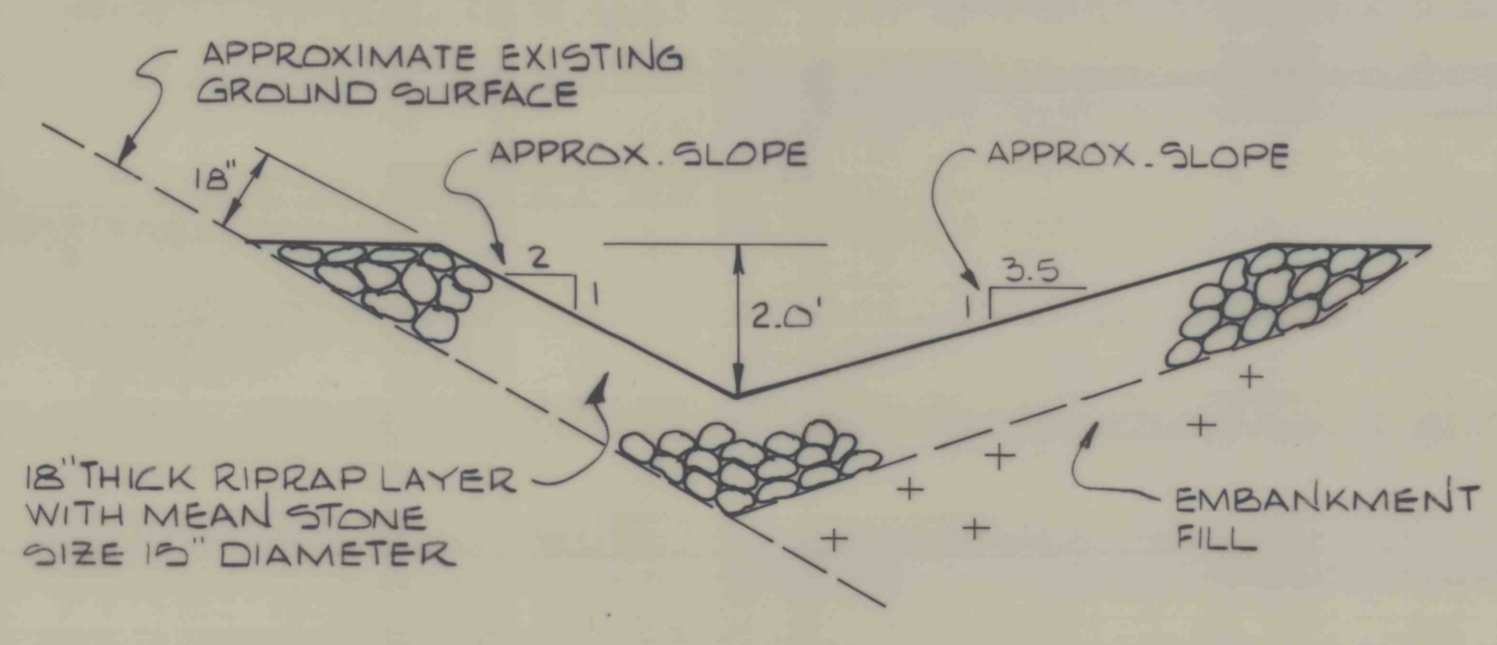
SECTION J-J  
 CULVERT NO. 2  
 SCALE: 1" = 20'



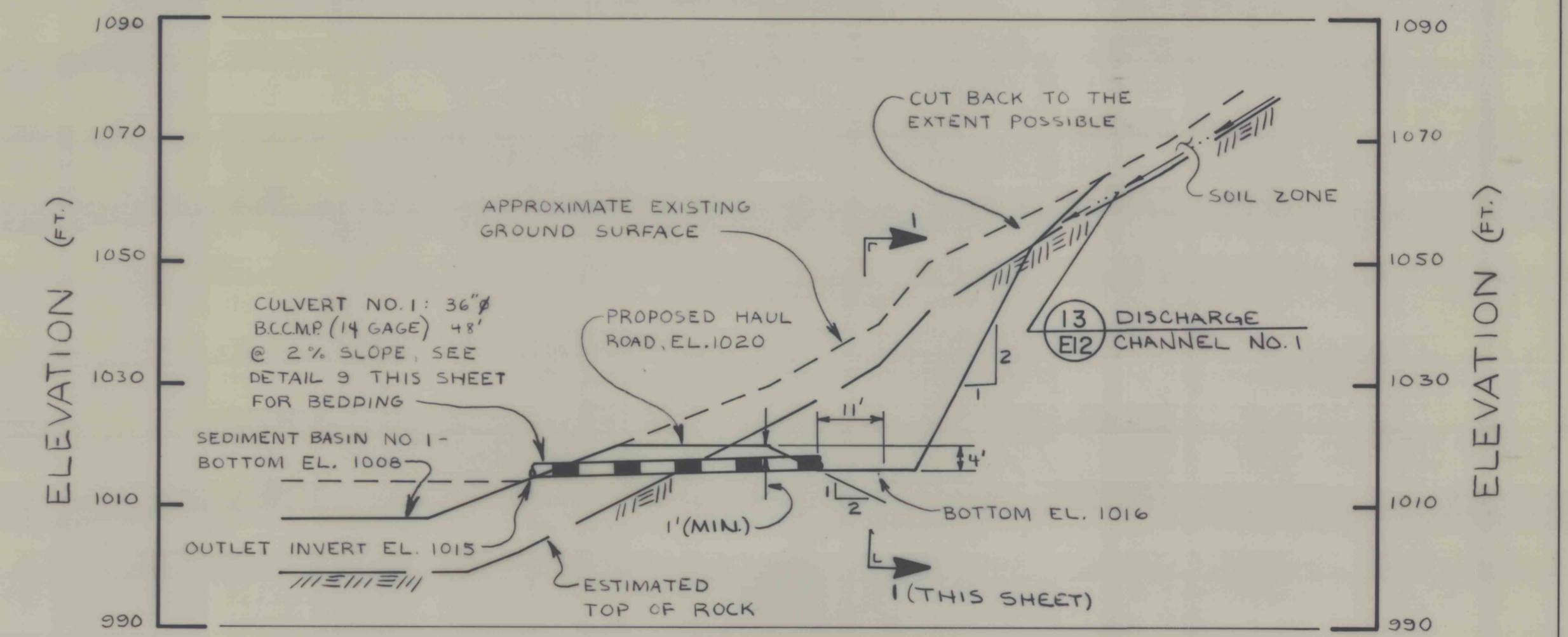
SECTION L-L  
 SECTION THROUGH IMPOUNDMENT  
 SCALE: 1" = 50'



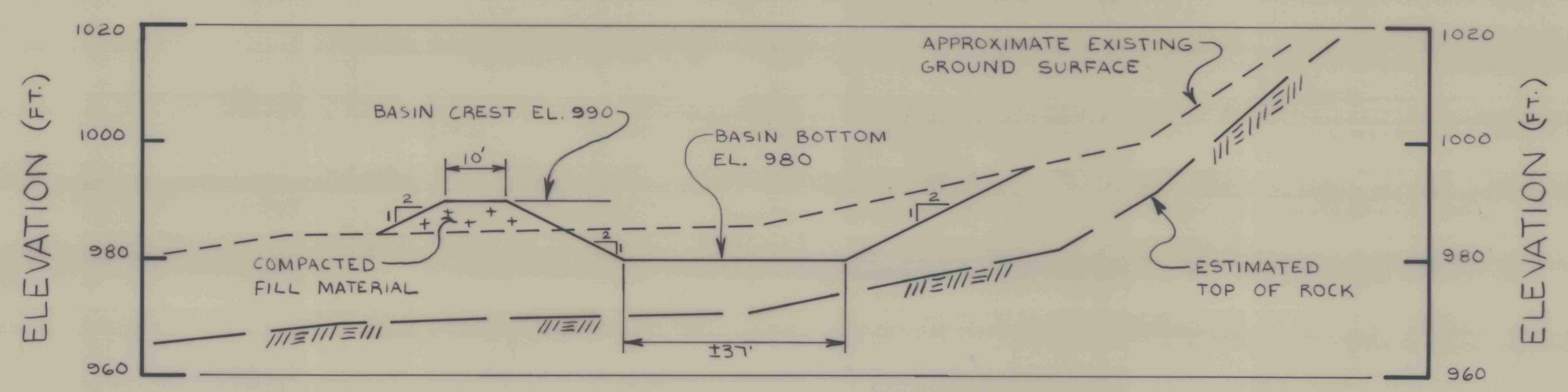
SECTION M-M  
 SEDIMENT BASIN NO. 2  
 SCALE: 1" = 40'



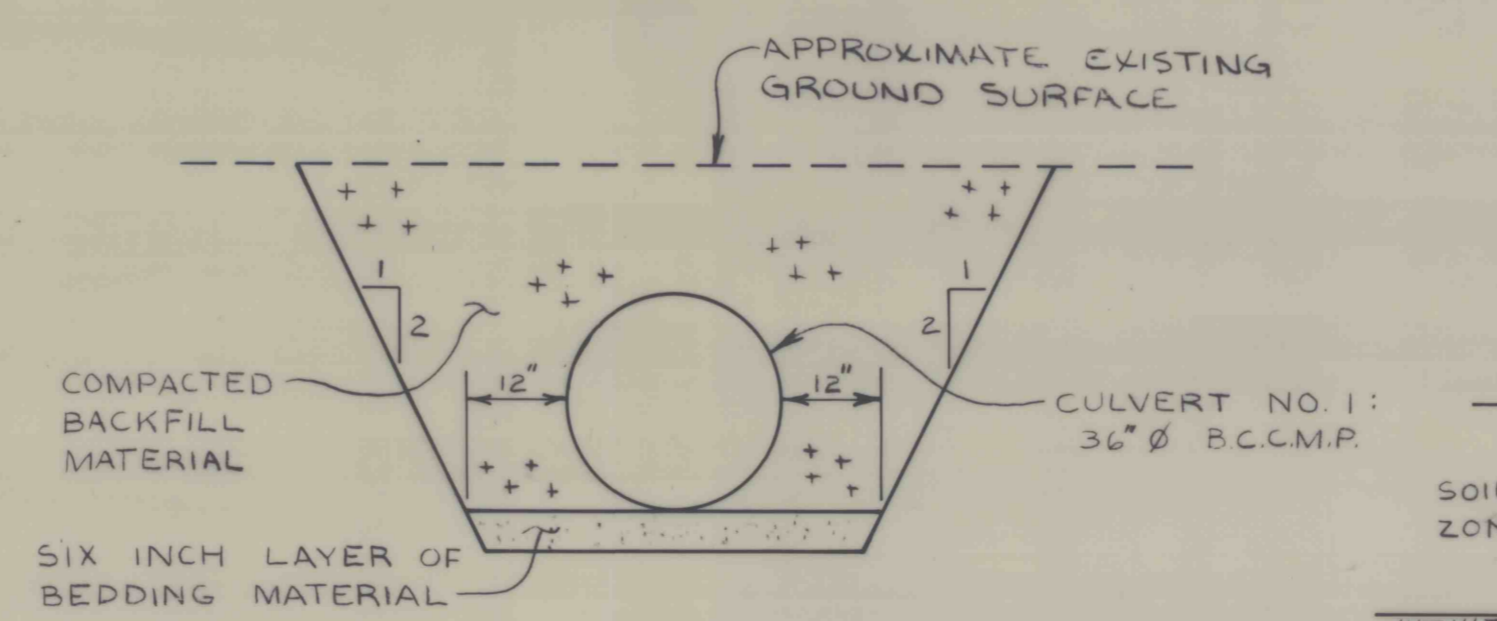
DETAIL 8  
 GROIN DITCH  
 N.T.S.



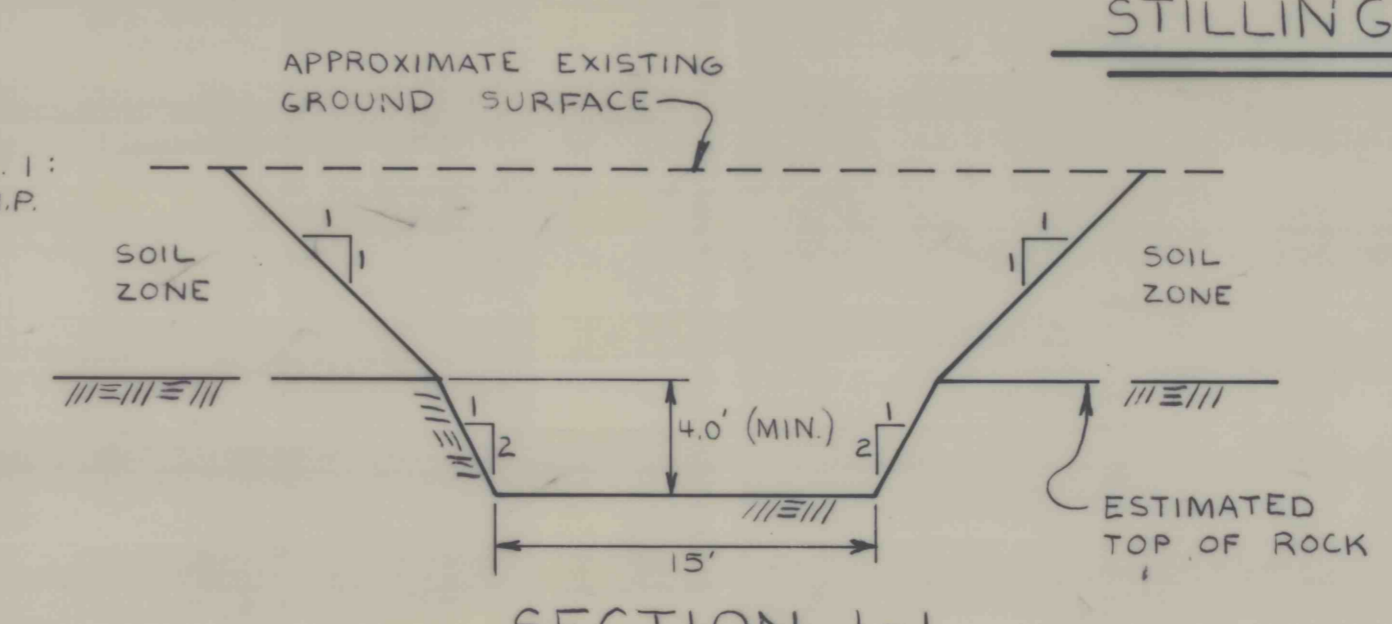
SECTION O-O  
 STILLING BASIN NO. 1 AND CULVERT NO. 1  
 SCALE: 1" = 20'



SECTION N-N  
 SEDIMENT BASIN NO. 2  
 SCALE: 1" = 20'



DETAIL 9  
 TYPICAL CULVERT BEDDING  
 N.T.S.



SECTION I-1  
 N.T.S.

**SRW ASSOCIATES INC.**

SCALE: AS NOTED    APPROVED BY: *[Signature]*    DRAWN BY: D. BRENT  
 DATE: AUG. 27, 1986    CHECKED BY: *[Signature]*

BETHEGNEY MINES CORPORATION  
 WEST VIRGINIA DIVISION  
 BROWN'S BRANCH IMPOUNDMENT  
 BOONE COUNTY, WEST VIRGINIA

SECTIONS H-H THROUGH O-O AND DETAILS 8 AND 9    SHEET NUMBER 12 of 17  
 DRAWING NUMBER 86239 - E11