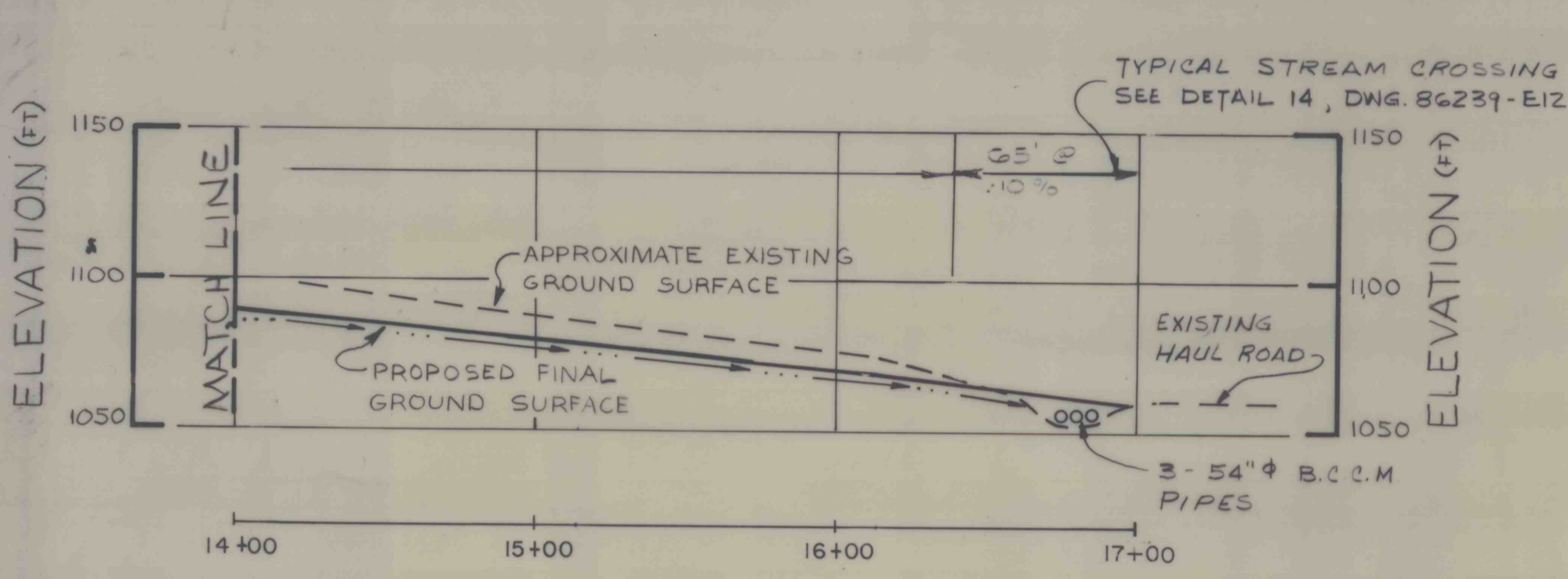
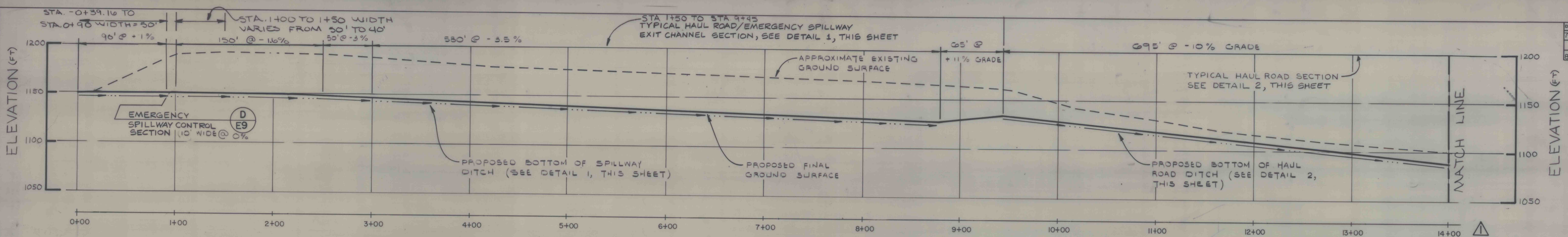
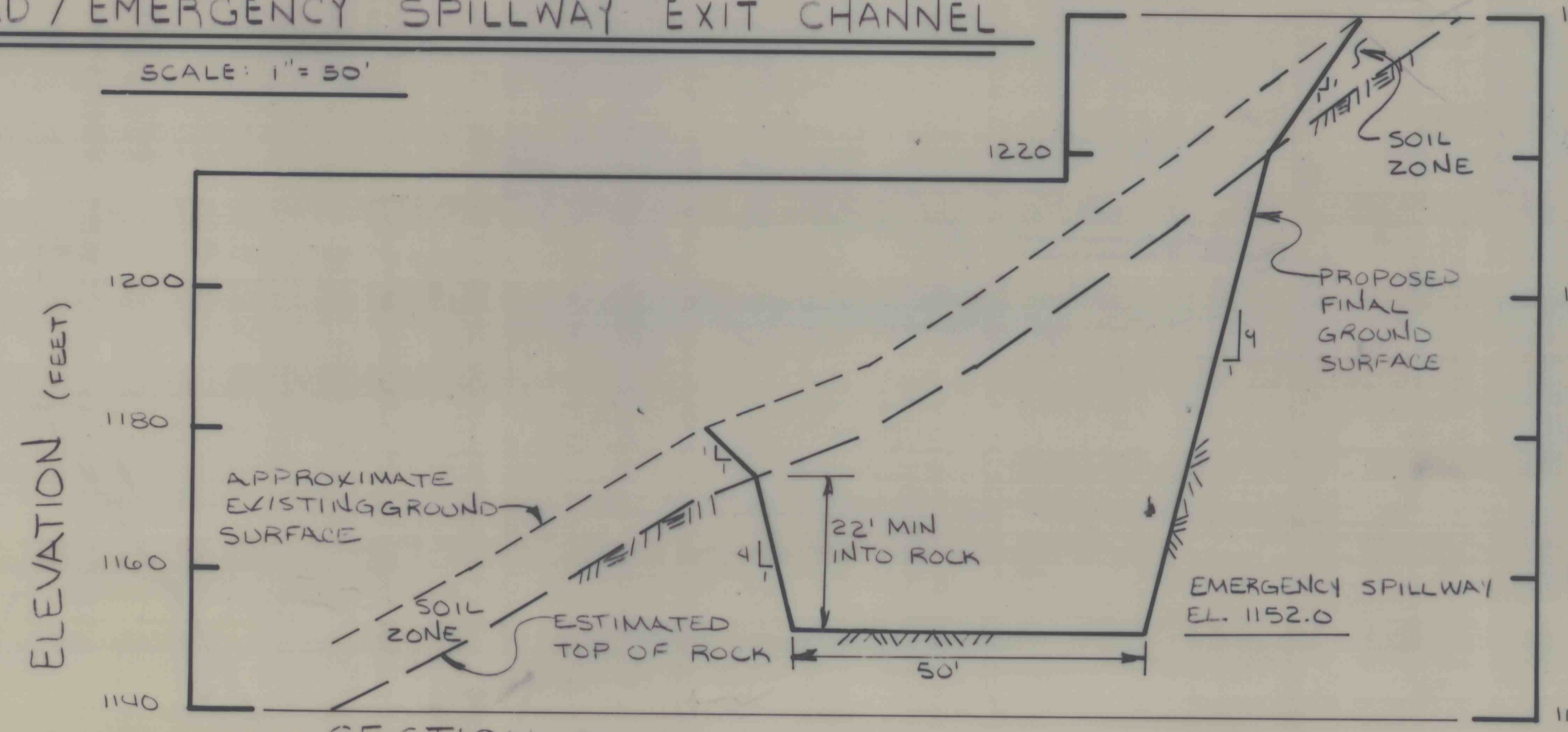


DATE	BY	REVISION RECORD	DR	CK
7-87		CHANGED STATIONING AND SECTION D-D		
8-87		CHANGED SPILLWAY DEPTH		

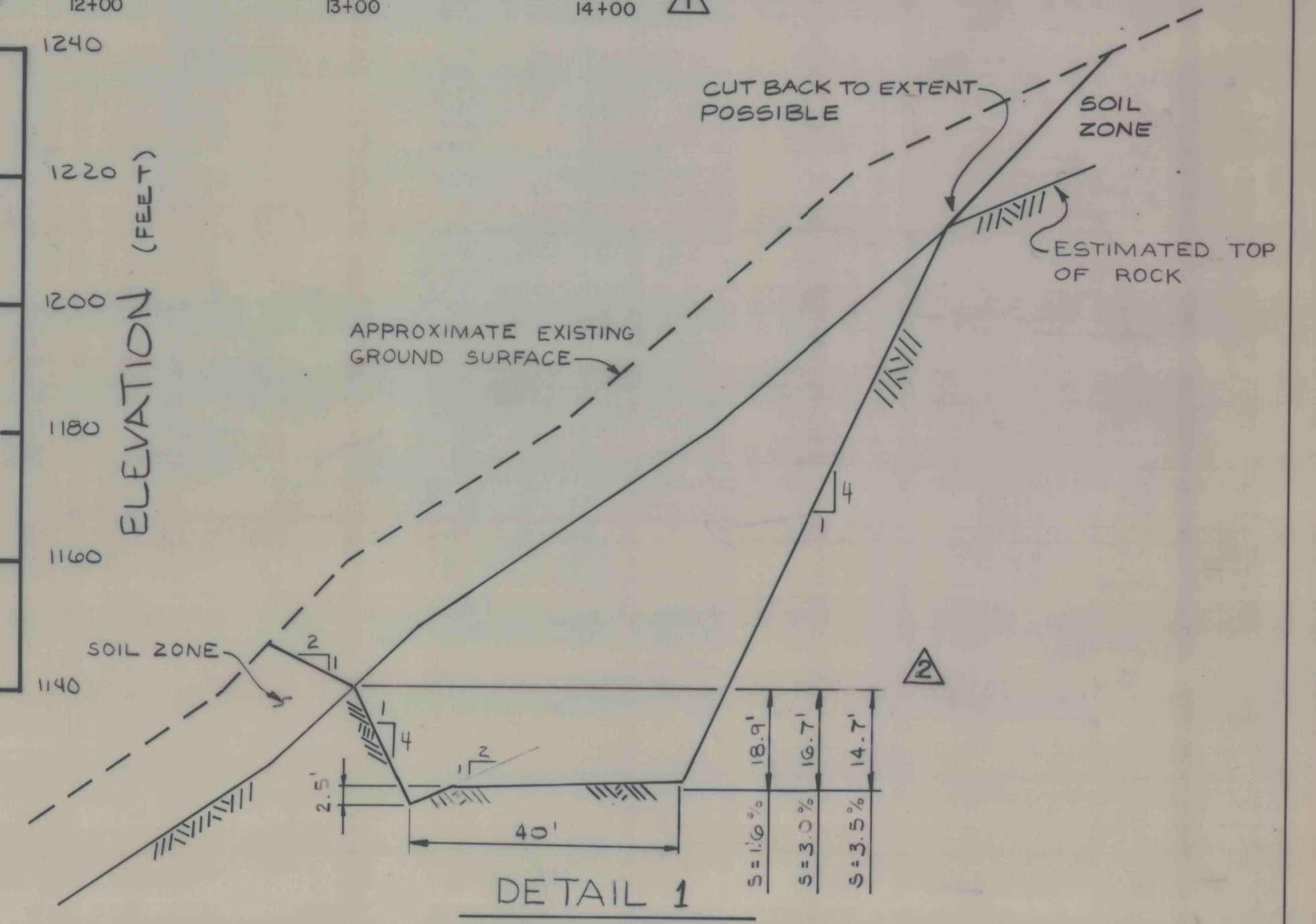


**PROFILE
HAUL ROAD/
EMERGENCY SPILLWAY EXIT CHANNEL**
SCALE: 1"=50'

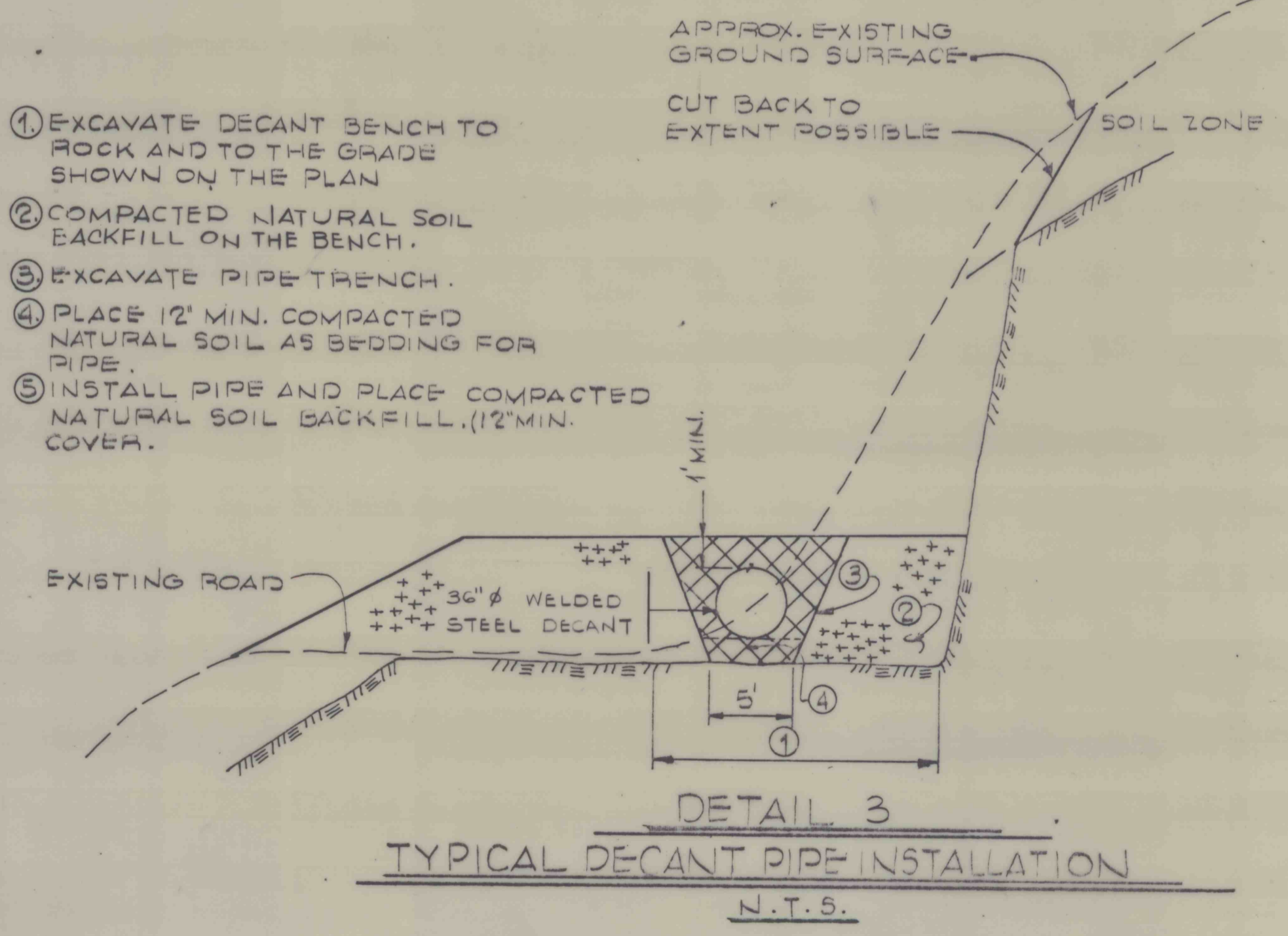
PROFILE - HAUL ROAD / EMERGENCY SPILLWAY EXIT CHANNEL



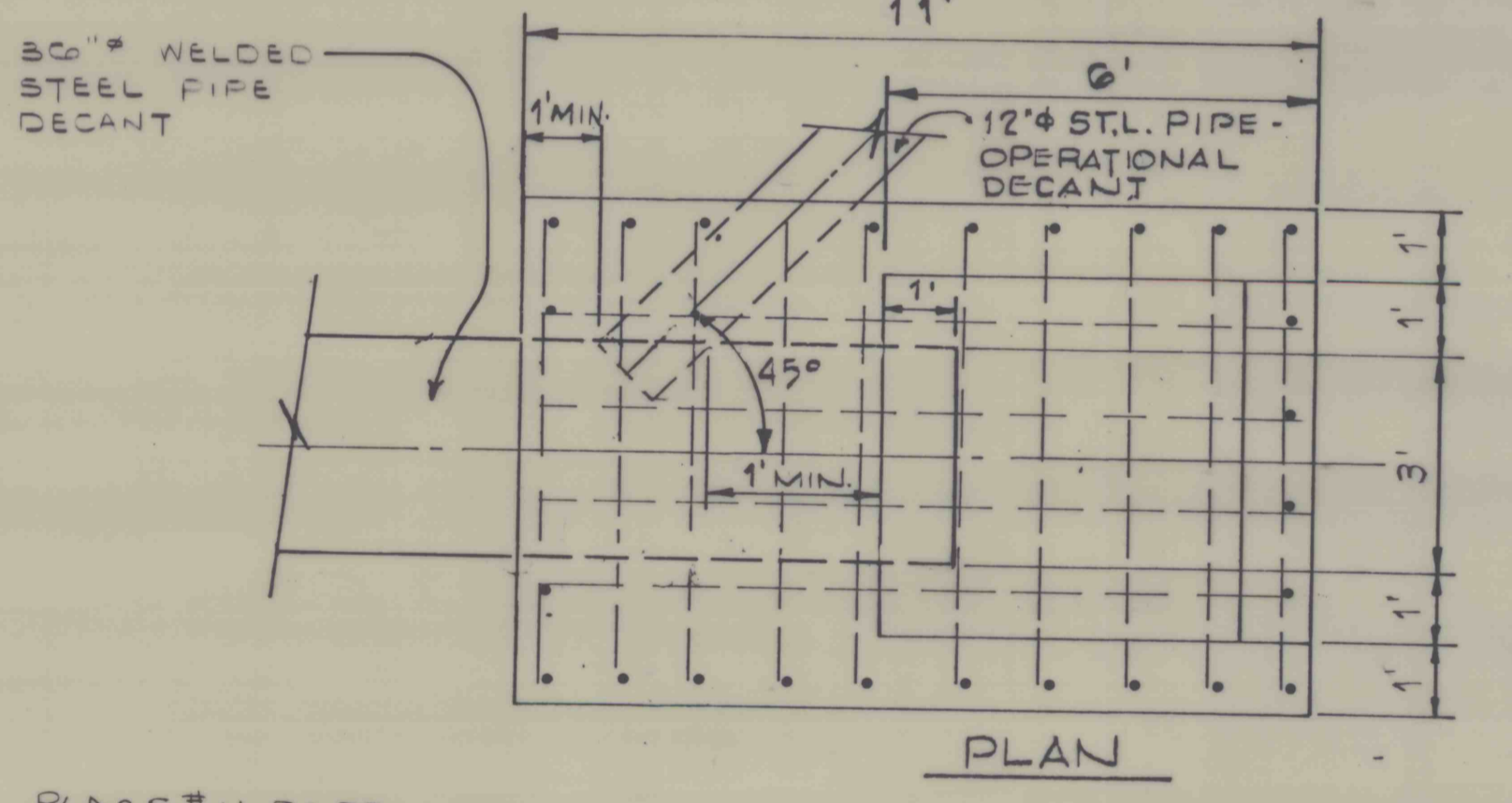
**SECTION D-D
EMERGENCY SPILLWAY CONTROL SECTION**
SCALE: 1"=20'



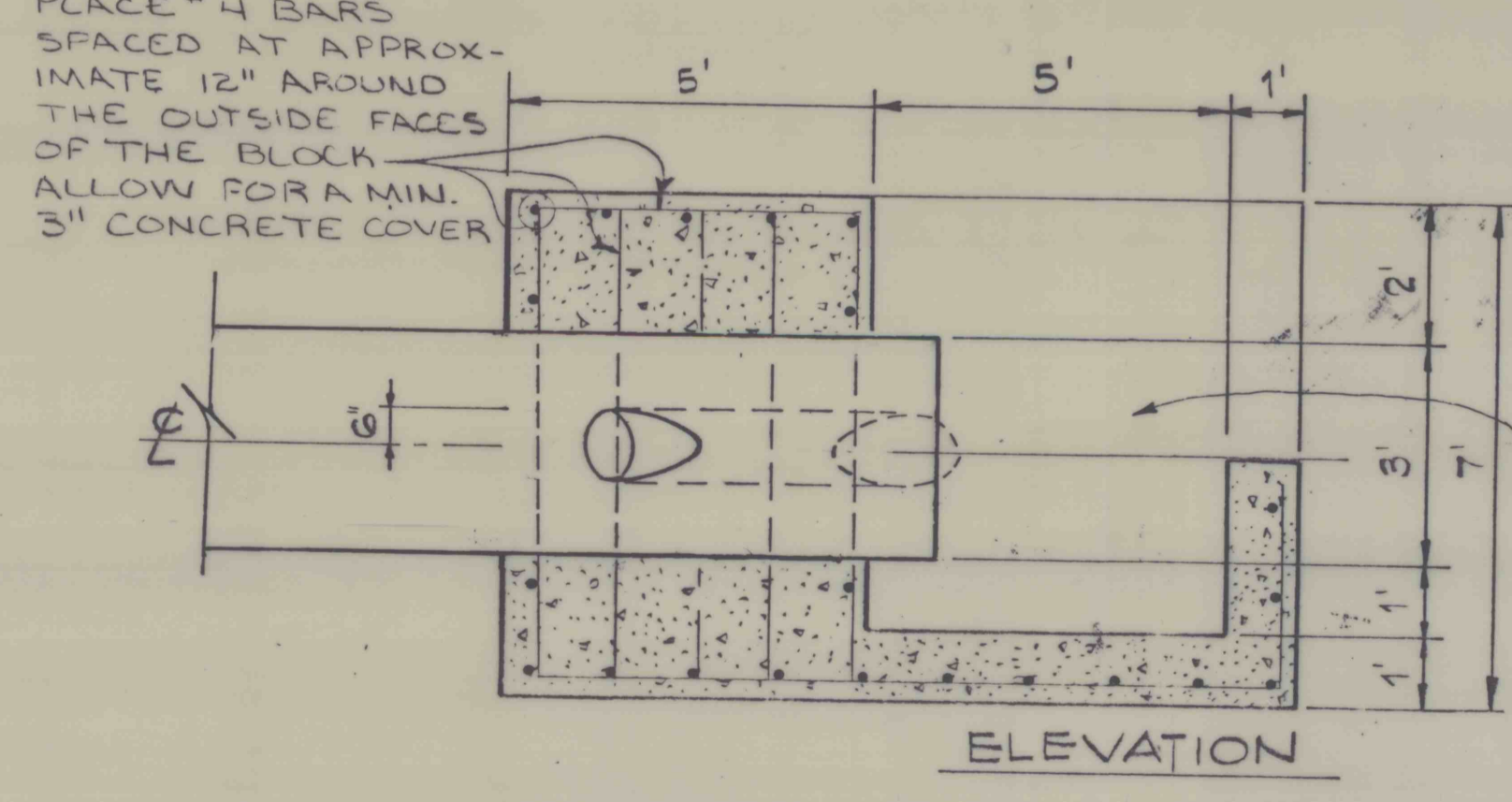
**TYPICAL HAUL ROAD / EMERGENCY
SPILLWAY EXIT CHANNEL SECTION**
N.T.S.



**DETAIL 3
TYPICAL DECANT PIPE INSTALLATION**
N.T.S.

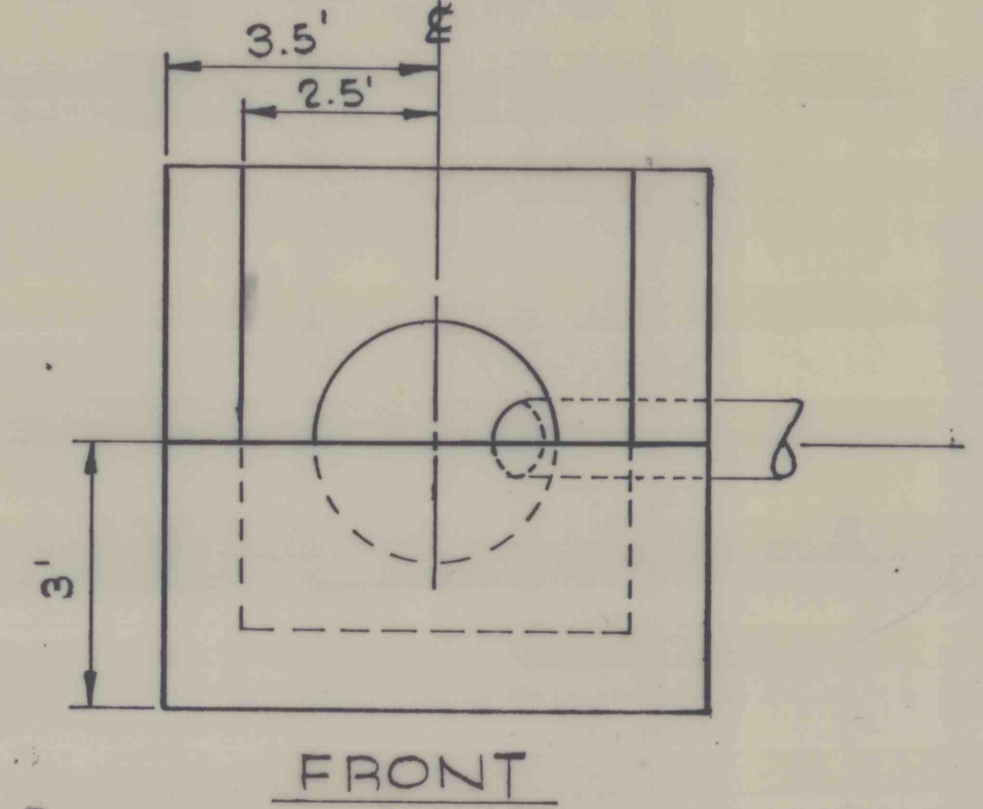


PLAN



ELEVATION

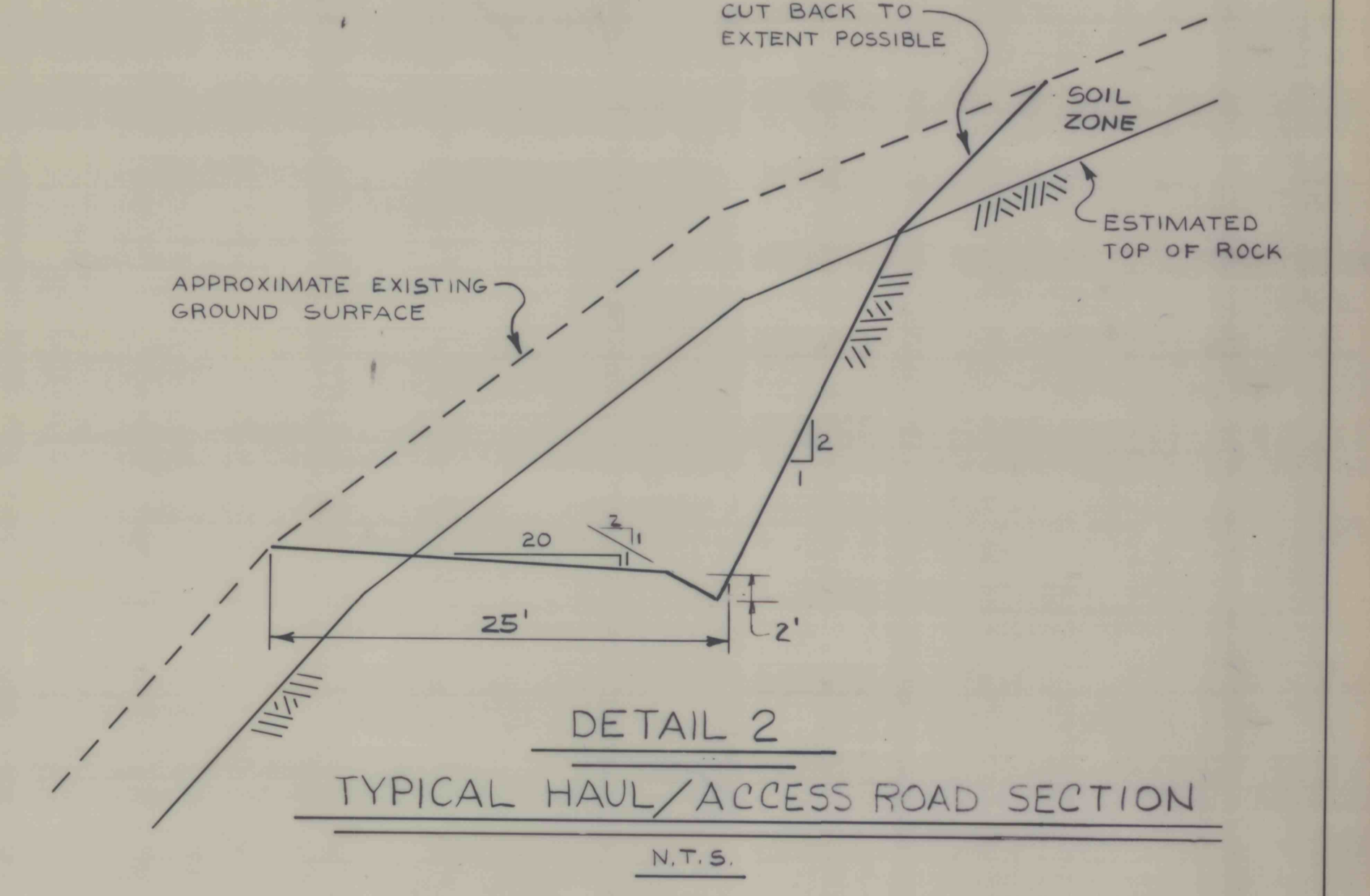
TO SEAL INLET BOX:
1. CLOSE OFF PIPE INLET WITH A SHEET OF PLYWOOD, TAKE PRECAUTIONS THAT NO CONCRETE WILL ENTER INTO THE PIPE.
2. PLACE A FORM AGAINST THE UPSTREAM WALL
3. FILL BOX WITH CONCRETE



FRONT

**DETAIL 4
DECANT INLET BOX**
N.T.S.

NOTE: AS DIRECTED BY THE ENGINEER, INSTALL AN ELBOW ENCASED IN CONCRETE. EXTEND DECANT VERTICALLY AND PLACE A 100' DIAMETER PAD OF COMPACTED SOIL MATERIAL TO SUPPORT RISER.



**DETAIL 2
TYPICAL HAUL/ACCESS ROAD SECTION**
N.T.S.

SRW ASSOCIATES INC.

SCALE: AS NOTED APPROVED BY: DATE: APRIL 29, 1986 DRAWN BY: D. BRENT CHECKED BY: LLL

BETHENERGY MINES CORPORATION
WEST VIRGINIA DIVISION
BROWN'S BRANCH IMPOUNDMENT
BOONE COUNTY, WEST VIRGINIA

PROFILE - HAUL ROAD/EMERGENCY SPILLWAY EXIT CHANNEL, SECTION D-D AND DETAILS 1 THROUGH 4 SHEET NUMBER 10 of 17 DRAWING NUMBER 86239-E9