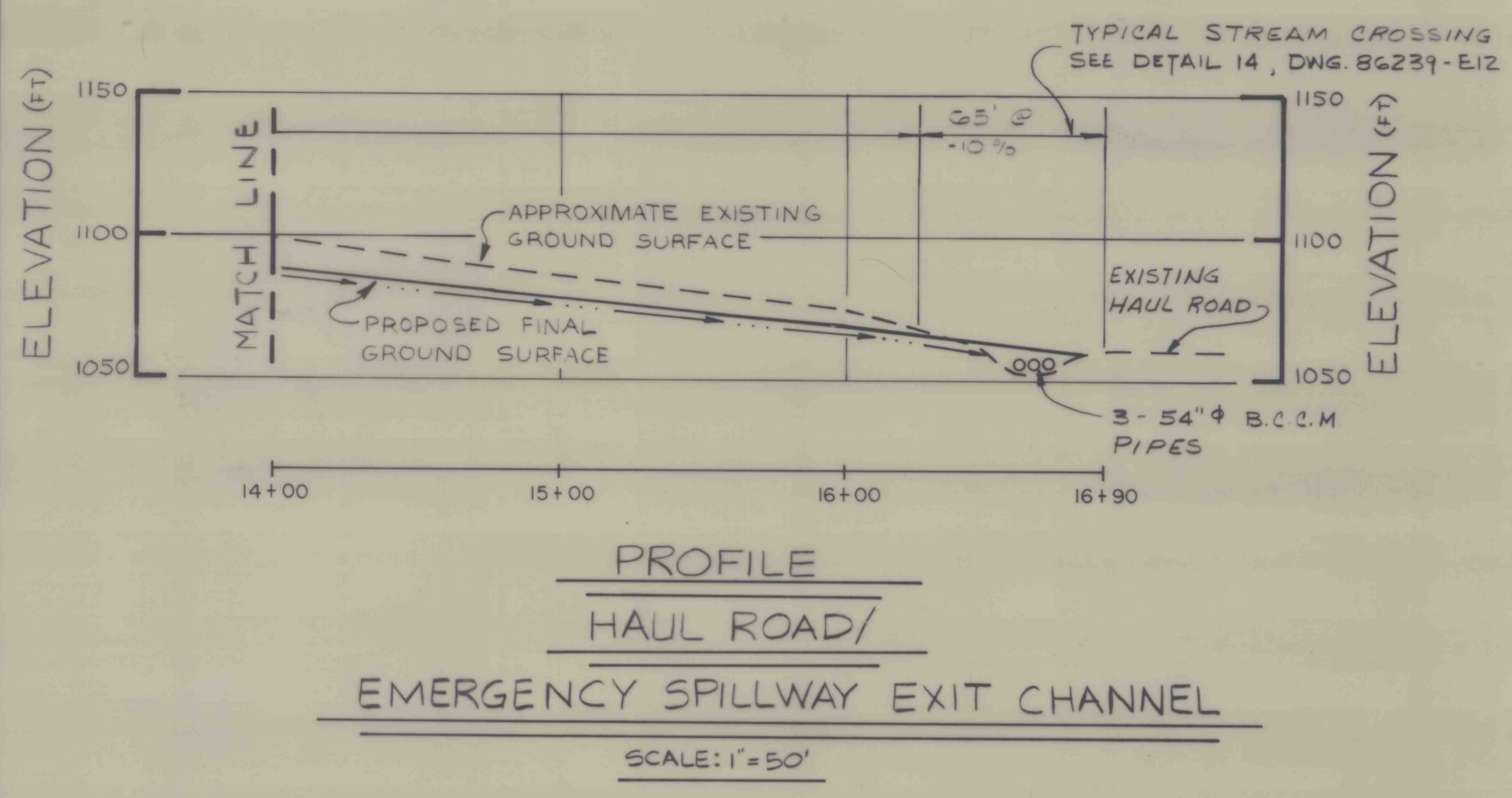
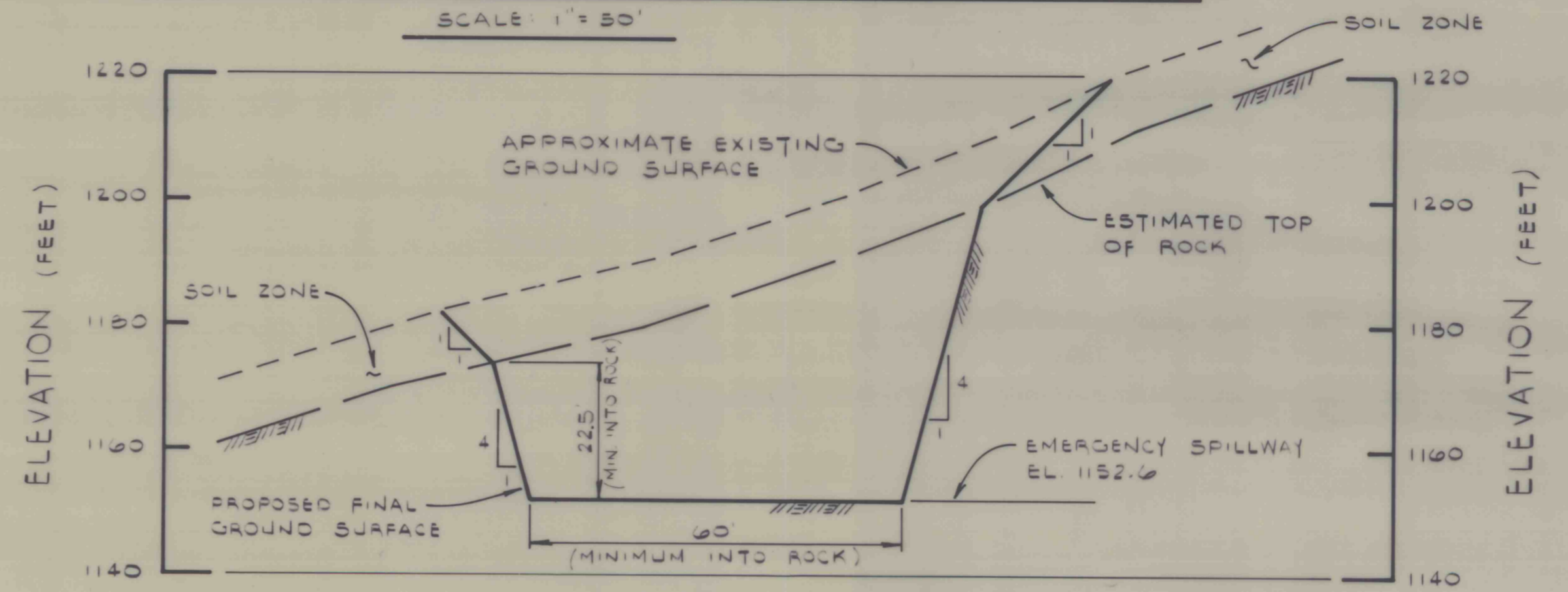


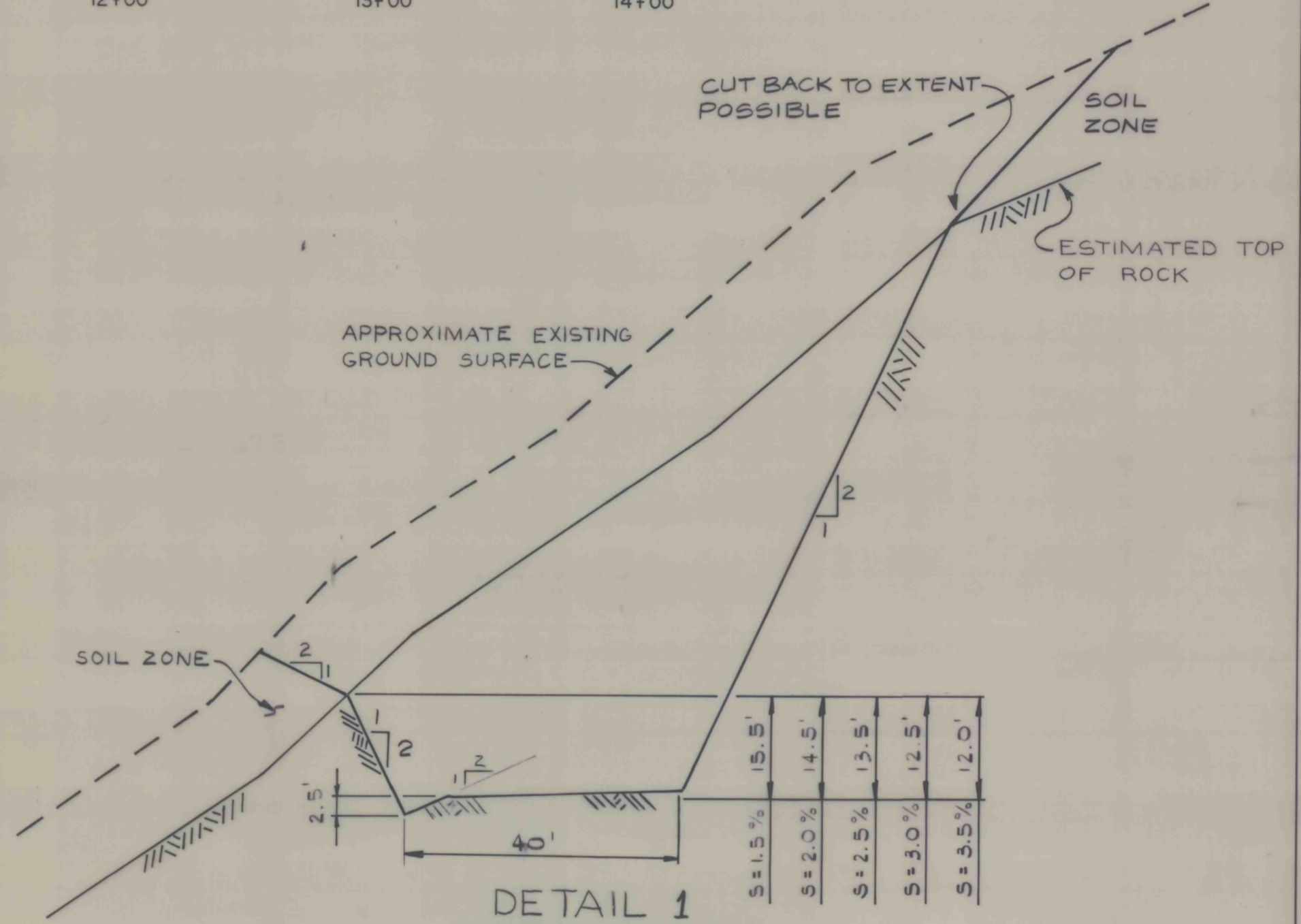
DATE	BY	REVISION	RECORD	DR	CR



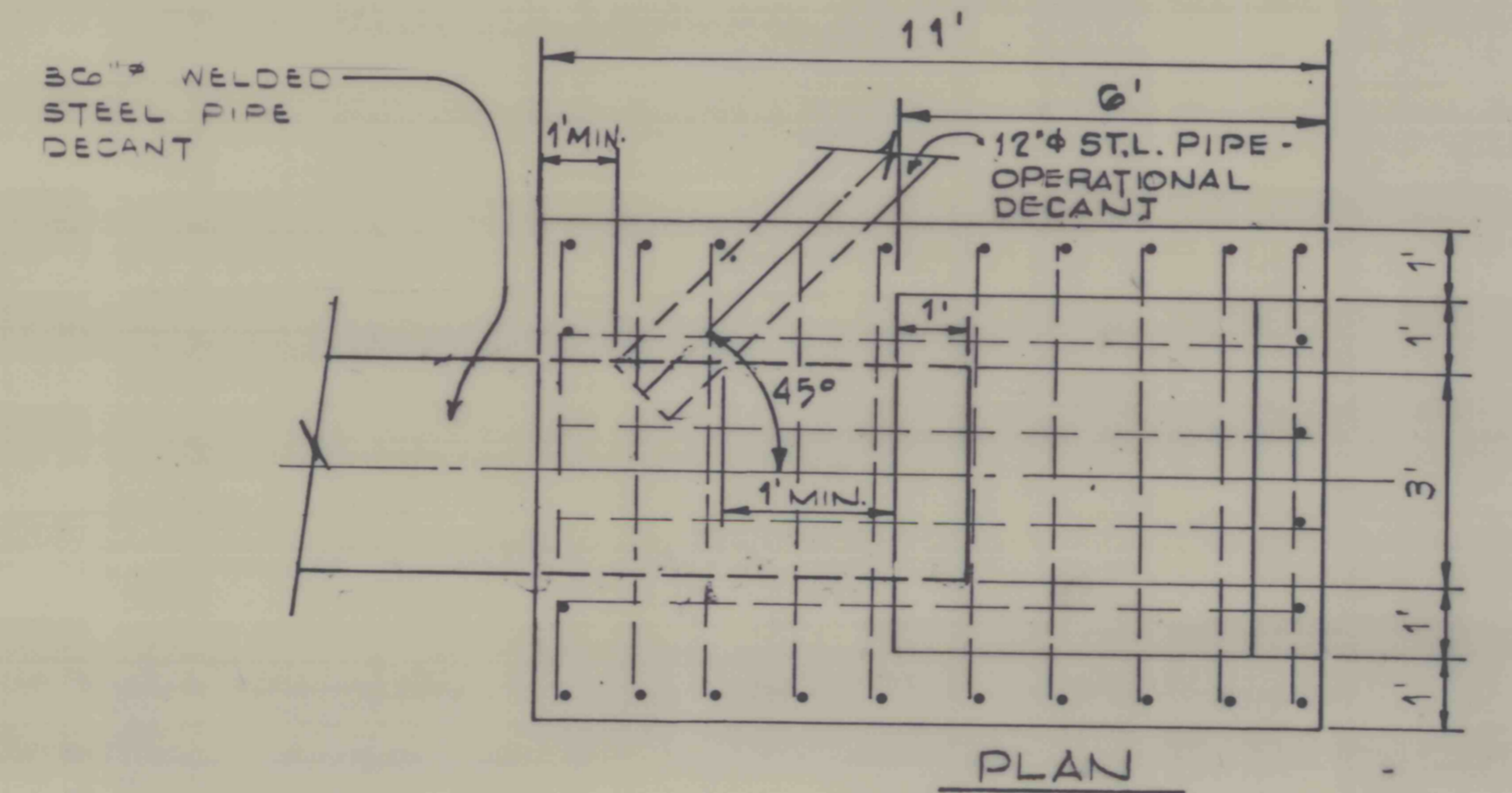
PROFILE - HAUL ROAD / EMERGENCY SPILLWAY EXIT CHANNEL



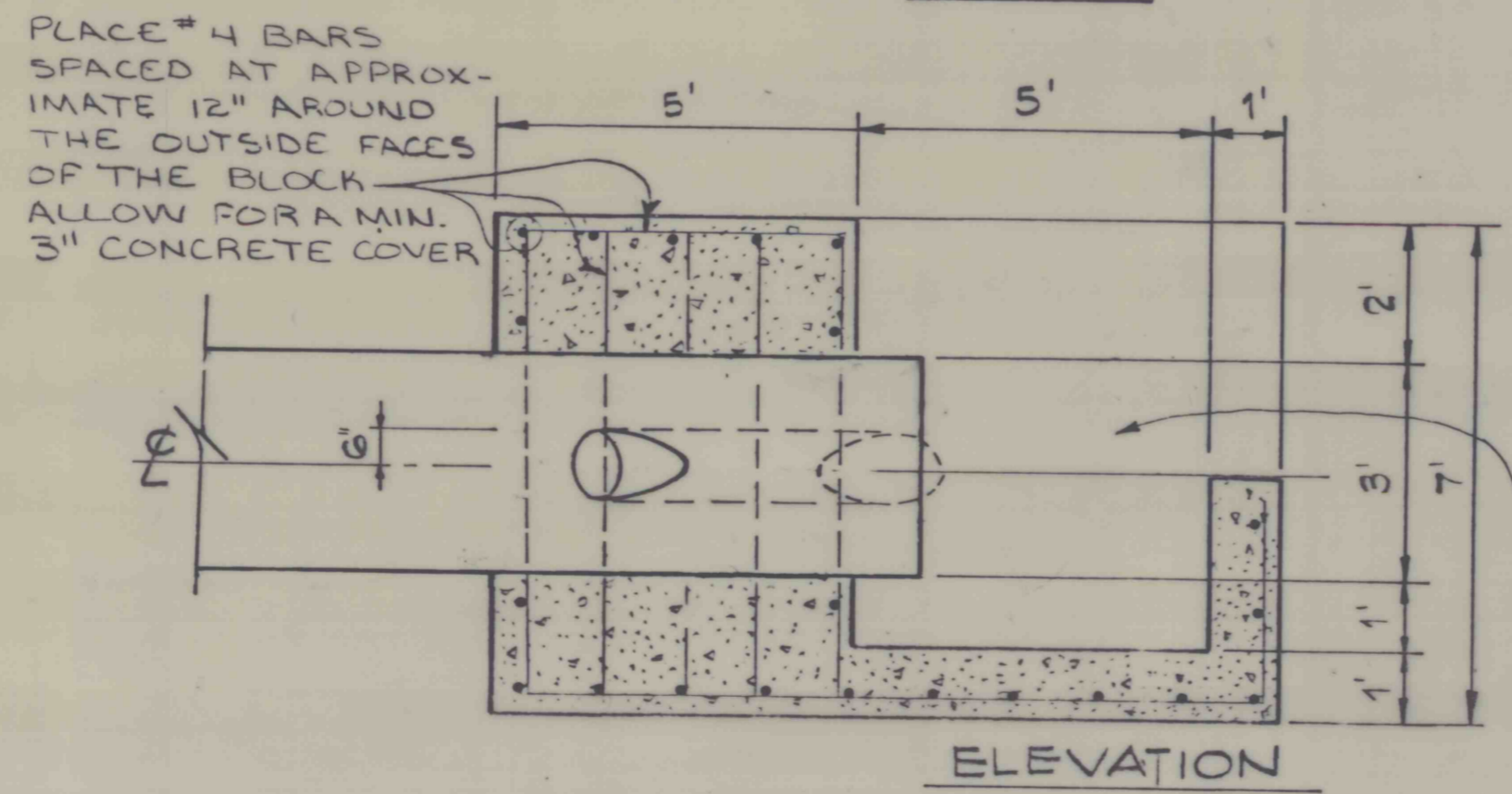
SECTION D-D
EMERGENCY SPILLWAY CONTROL SECTION



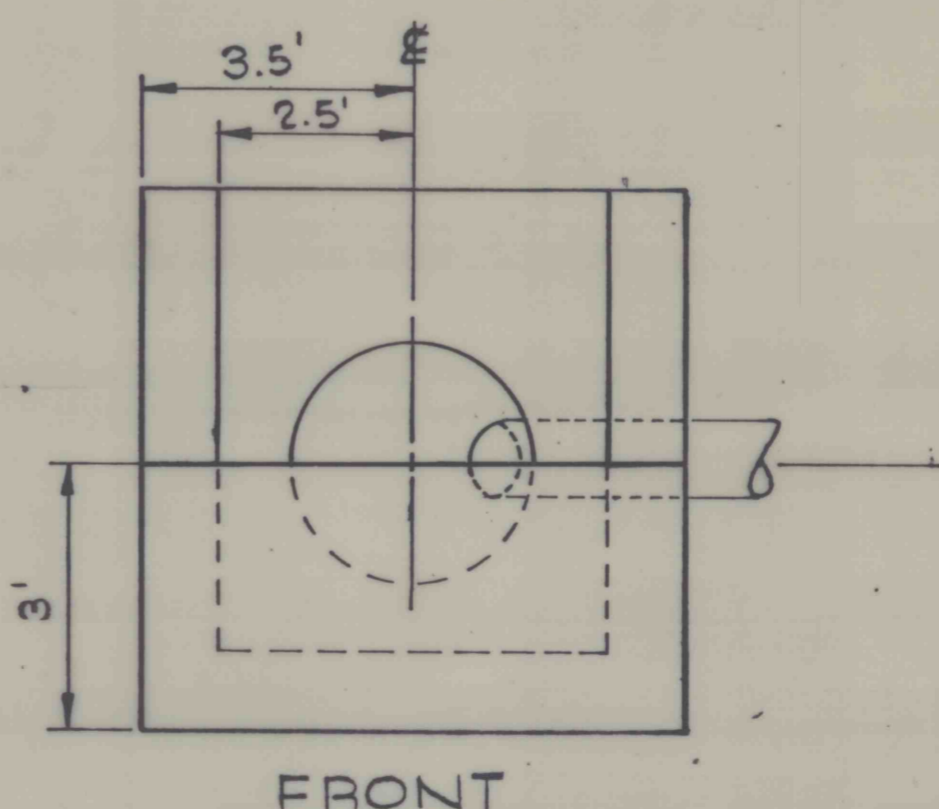
DETAIL 1
TYPICAL HAUL ROAD / EMERGENCY SPILLWAY EXIT CHANNEL SECTION



PLAN



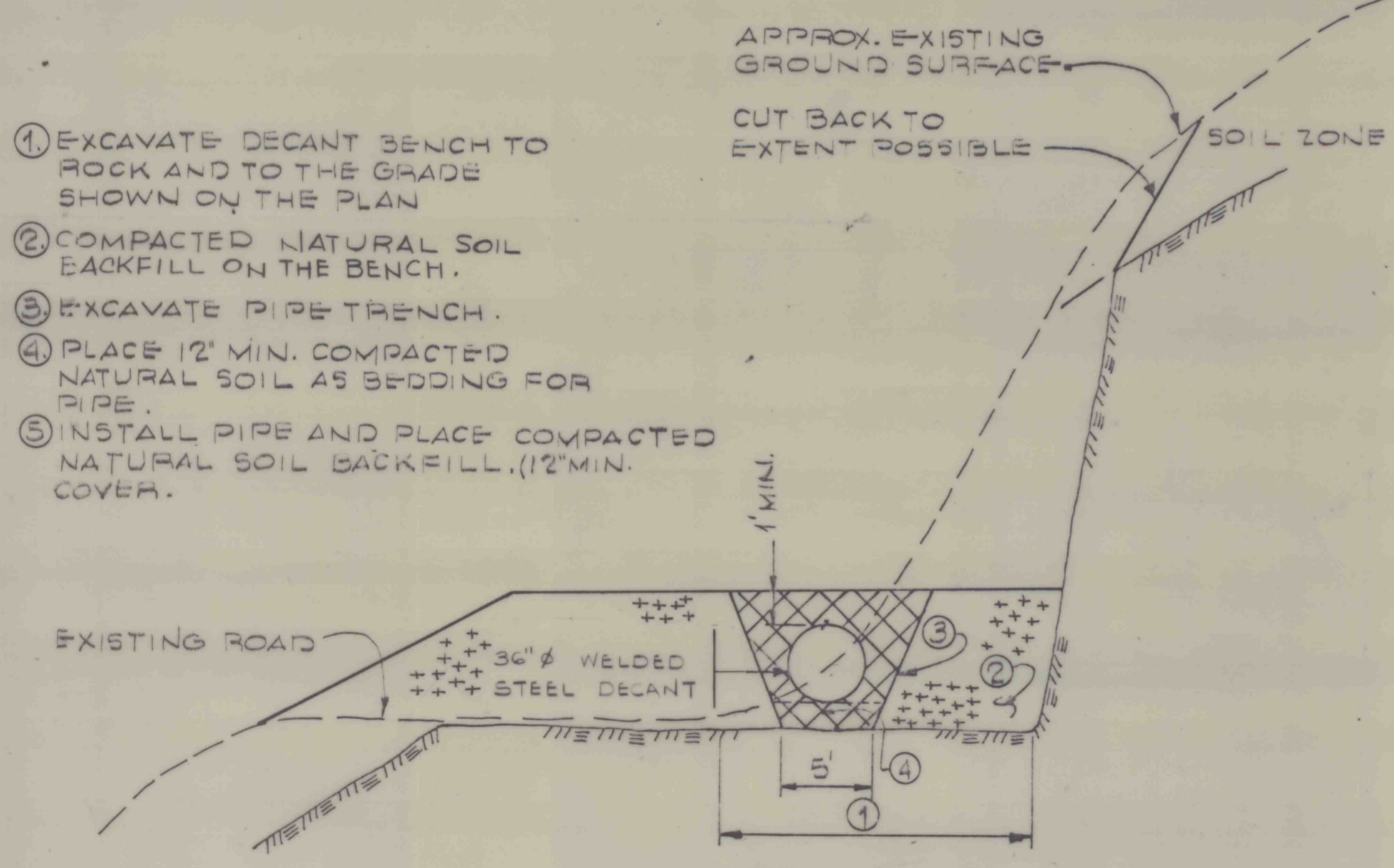
ELEVATION



FRONT

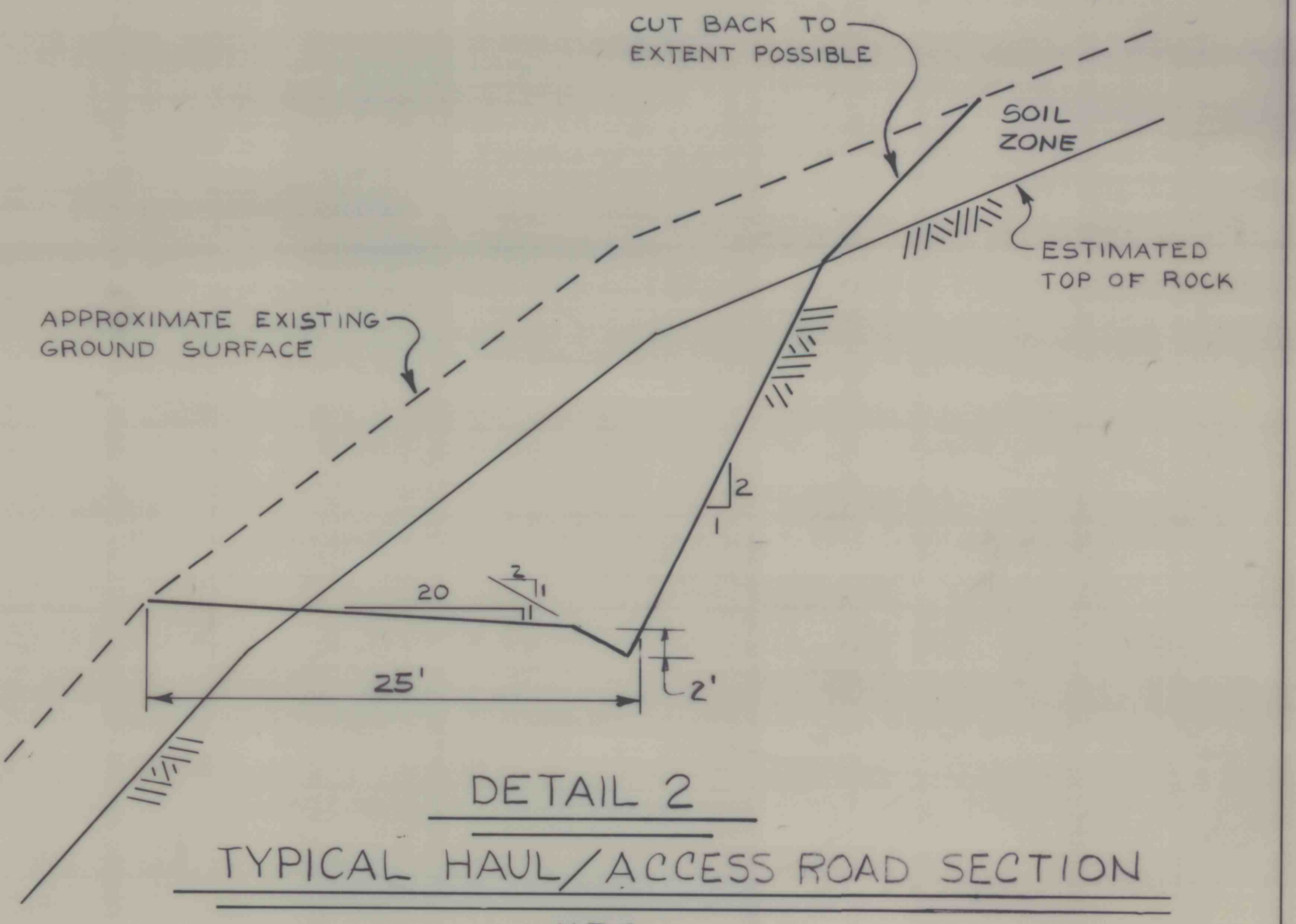
NOTE: AS DIRECTED BY THE ENGINEER, INSTALL AN ELBOW ENCASED IN CONCRETE. EXTEND DECANT VERTICALLY AND PLACE A 100' DIAMETER PAD OF COMPACTED SOIL MATERIAL TO SUPPORT RISER.

DETAIL 4
DECANT INLET BOX



DETAIL 3
TYPICAL DECANT PIPE INSTALLATION

- EXCAVATE DECANT BENCH TO ROCK AND TO THE GRADE SHOWN ON THE PLAN
- COMPACTED NATURAL SOIL BACKFILL ON THE BENCH.
- EXCAVATE PIPE TRENCH.
- PLACE 12' MIN. COMPACTED NATURAL SOIL AS BEDDING FOR PIPE.
- INSTALL PIPE AND PLACE COMPACTED NATURAL SOIL BACKFILL (12' MIN. COVER).



DETAIL 2
TYPICAL HAUL / ACCESS ROAD SECTION

SRW ASSOCIATES INC.

SCALE: AS NOTED APPROVED BY: *[Signature]* DRAWN BY: D. BRENT

DATE: APRIL 29, 1986 CHECKED BY: L.L.R.

BETHENERGY MINES CORPORATION
WEST VIRGINIA DIVISION
BROWN'S BRANCH IMPOUNDMENT
BOONE COUNTY, WEST VIRGINIA

PROFILE - HAUL ROAD / EMERGENCY SPILLWAY EXIT CHANNEL, SECTION D-D AND DETAILS 1 THROUGH 4 SHEET NUMBER 10 OF 17
DRAWING NUMBER 86239-E9