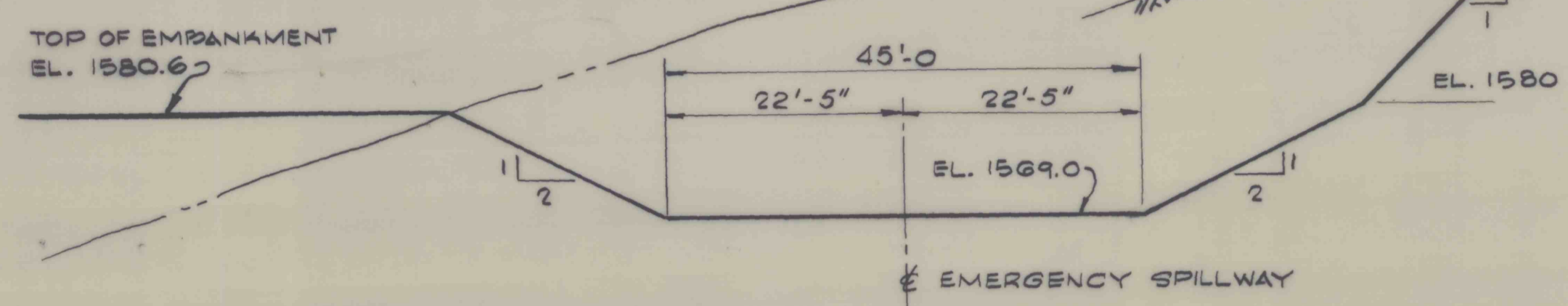
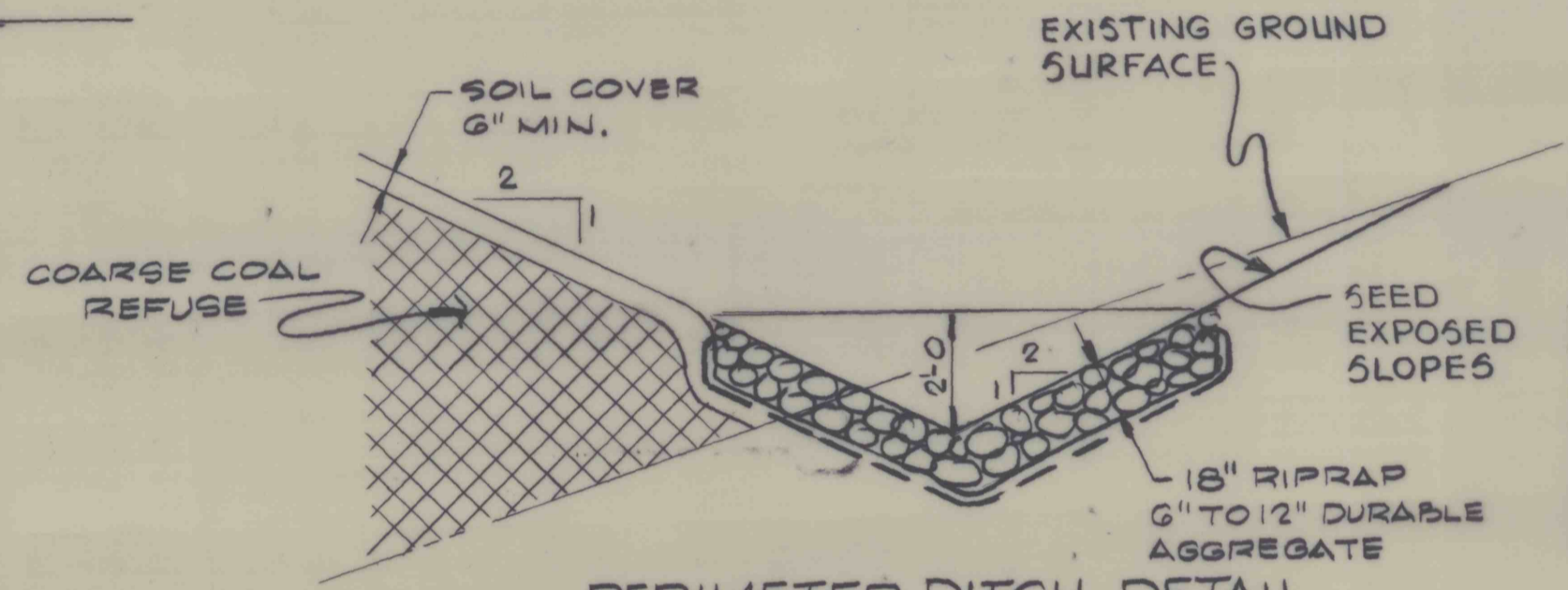


NOTE:
TIMBER CROSSING SHALL BE
CONSTRUCTED AS PER A.R.E.A.
SPECIFICATIONS FOR PREFABRICATED
SECTIONAL TREATED TIMBER CROSSINGS
(CHAPTER 9, PART 1.4)

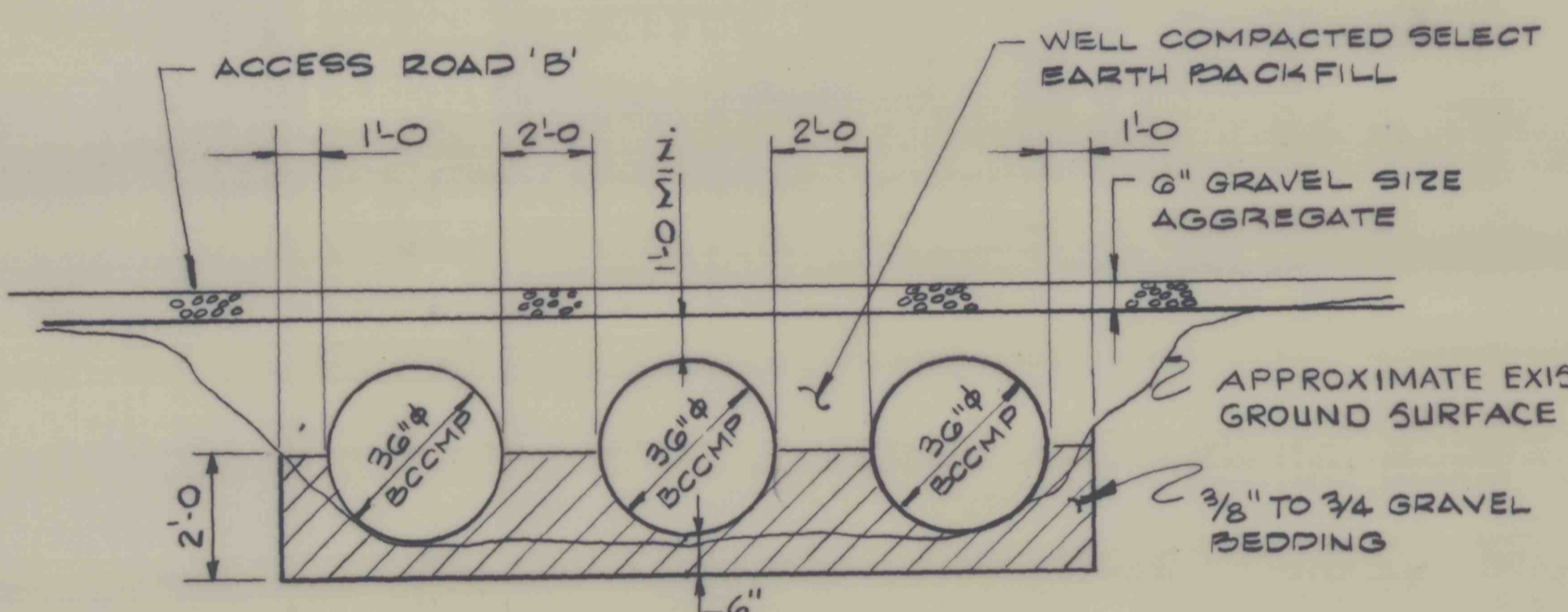
TYPICAL GRADE CROSSING
SCALE: NONE



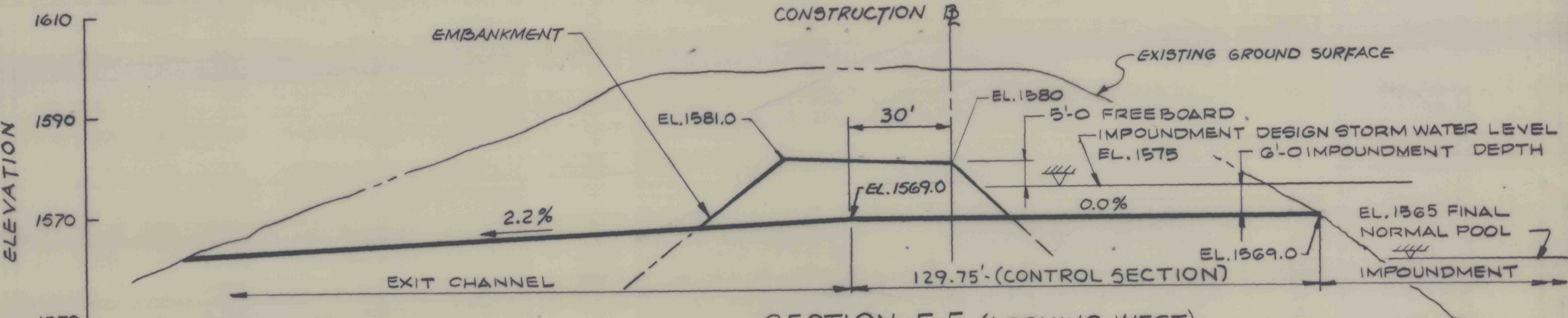
SECTION E-E EMERGENCY SPILLWAY (DWG. 82-312-E9)
SCALE: NONE



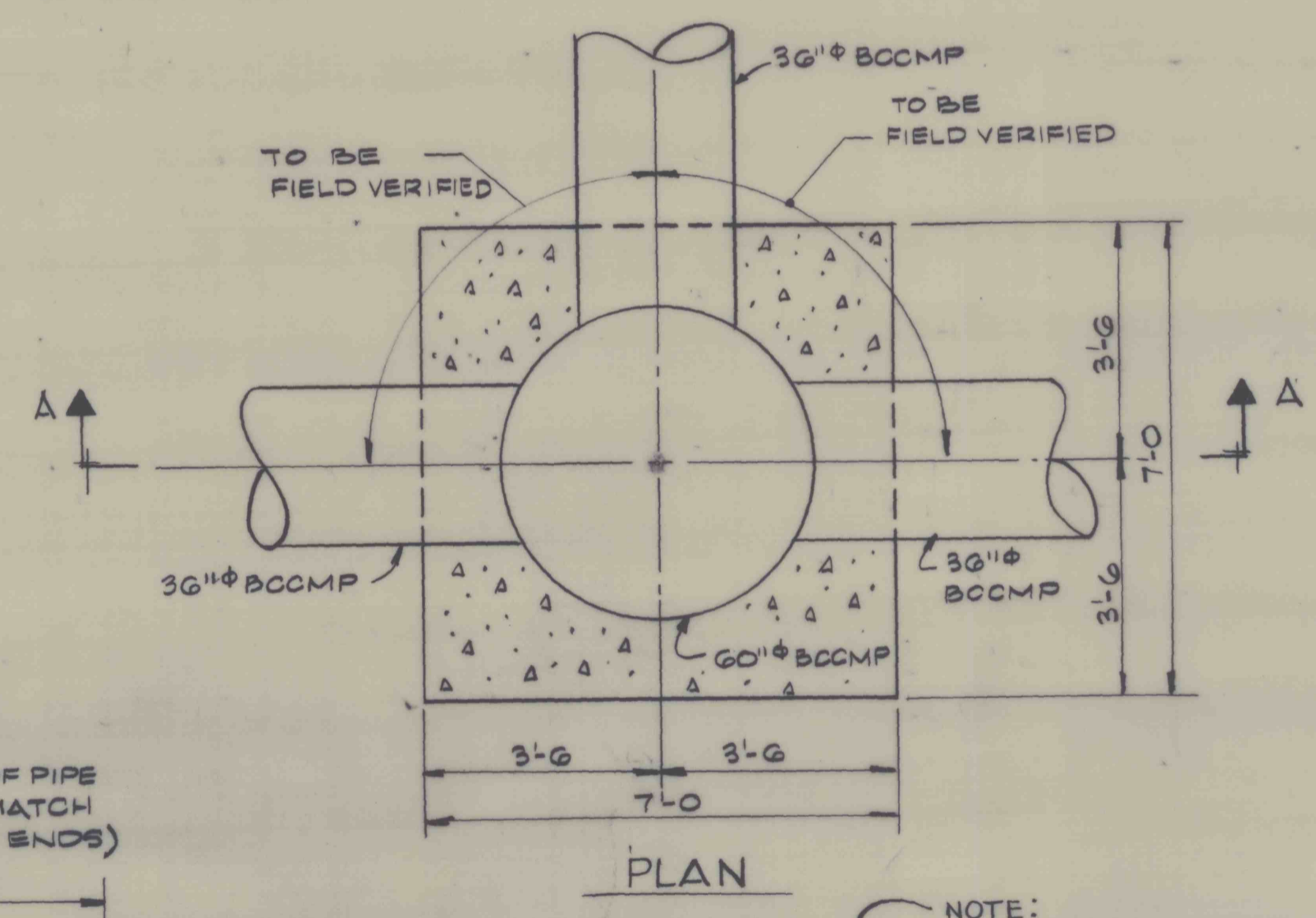
PERIMETER DITCH DETAIL
SCALE: NONE



TYPICAL BEDDING DETAIL
SCALE: NONE

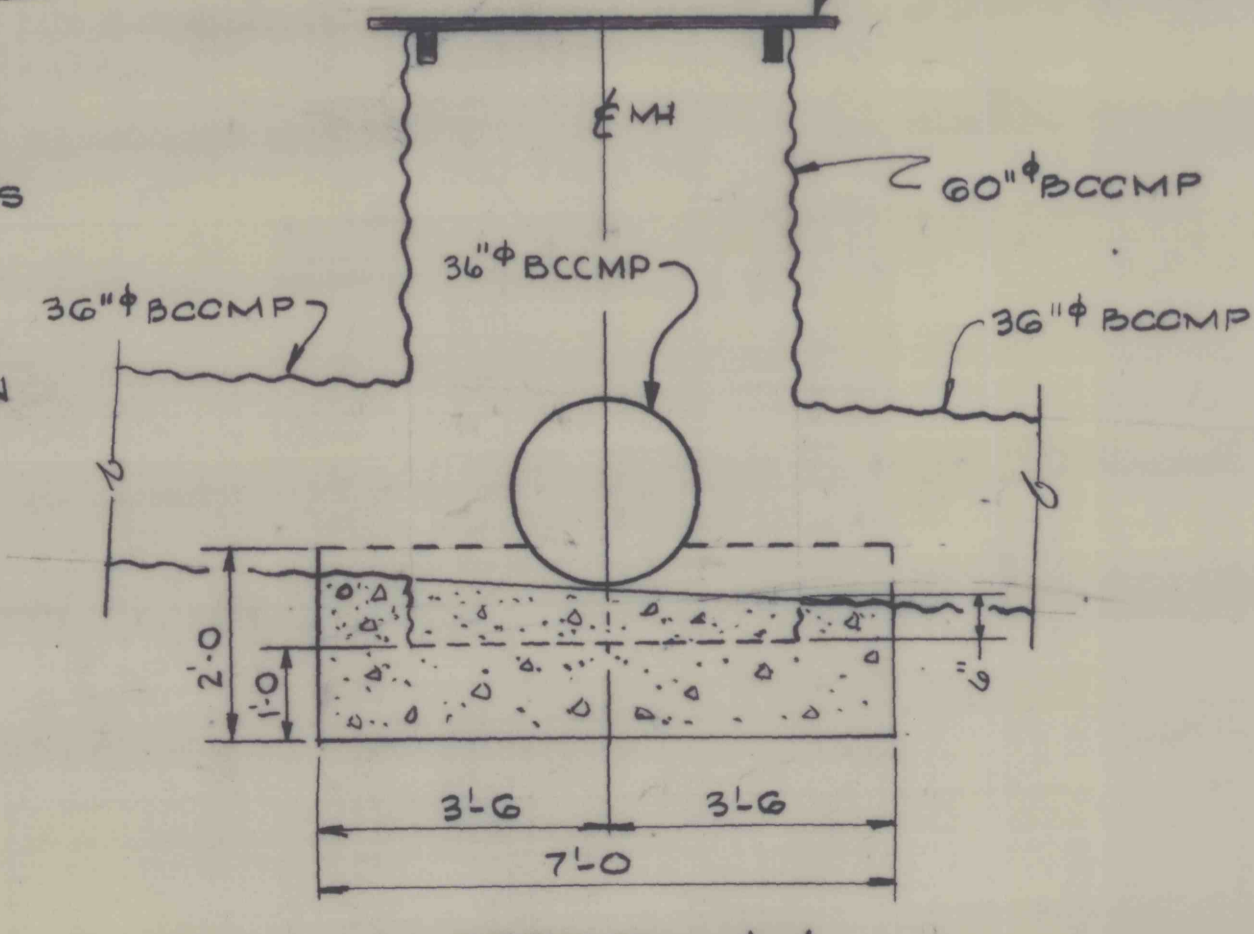


SECTION F-F (LOOKING WEST)
PROFILE EMERGENCY SPILLWAY (DWG. 82-312-E9)
VERT. SCALE: 1" = 20'
HORIZ. SCALE: 1" = 30'

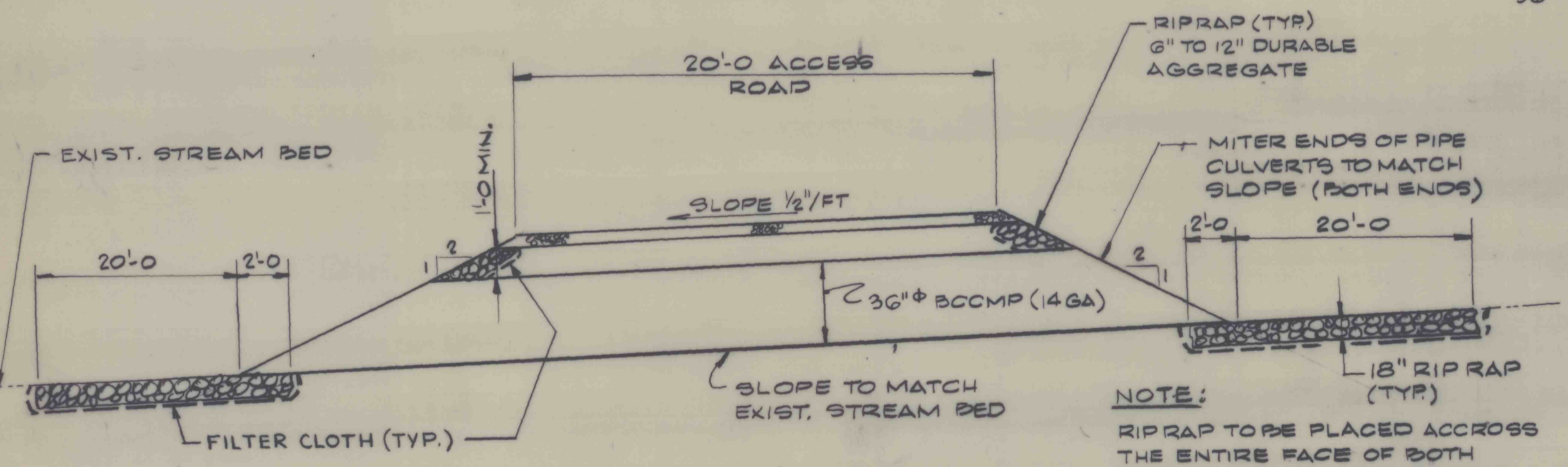


PLAN

NOTE:
MANHOLE LID TO BE CONSTRUCTED
OF PRESSURE TREATED LUMBER

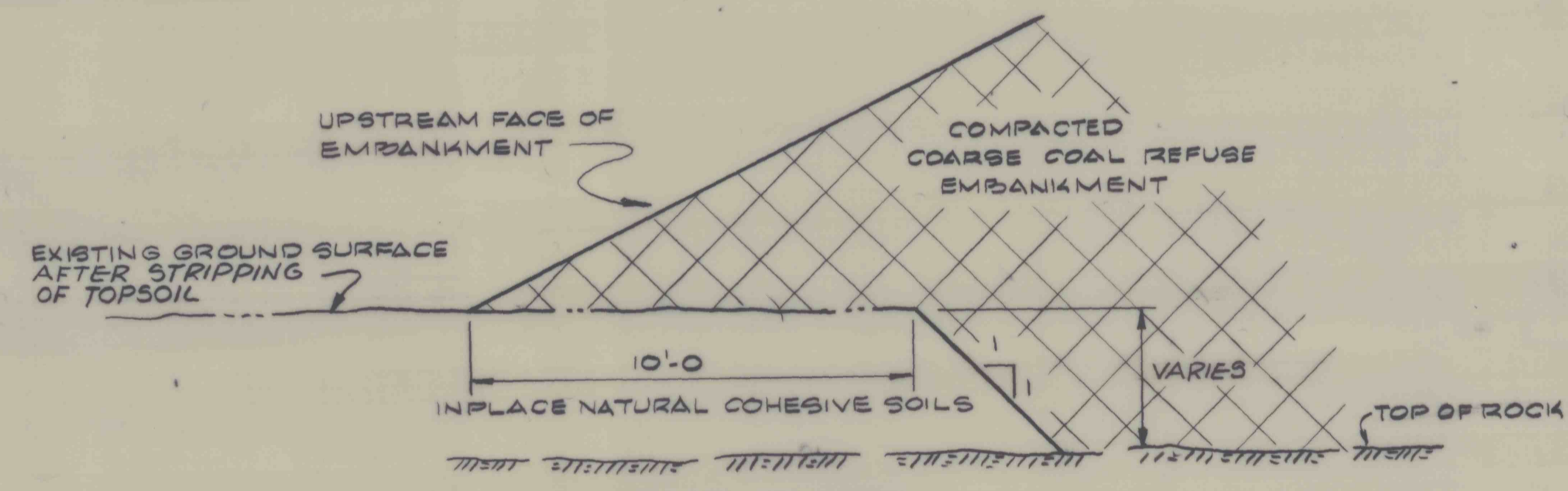


SECTION A-A
MANHOLE - DETAIL
SCALE: NONE



TYPICAL SECTION

DETAIL ~ A
BIG RUN CULVERT CROSSING
SCALE: NONE



SEEPAGE BARRIER DETAIL
ABOVE LEVEL OF STARTER DIKE
SCALE: NONE

NOTES:
1. ALL WORK SHALL BE DONE IN ACCORDANCE
WITH PERMIT AND TECHNICAL
SPECIFICATION 82-312-1.



MISCELLANEOUS DETAILS NORTH HOLLOW REFUSE IMPOUNDMENT MINE 101 COAL PREPARATION PLANT CENTURY, WEST VIRGINIA	
BETHLEHEM MINES CORP. CHARLESTON, WEST VIRGINIA	DRAWN: FJC APPROVED: FBN DATE: 7-14-83
ENGINEERS • GEOLOGISTS • PLANNERS ENVIRONMENTAL SPECIALISTS 570 Beatty Rd., Pittsburgh Monroeville, Pa. 15146 412-856-6400	SCALE: AS NOTED DRAWING NUMBER: 82-312-E13 REV:

DESCRIPTION	NO.	DATE