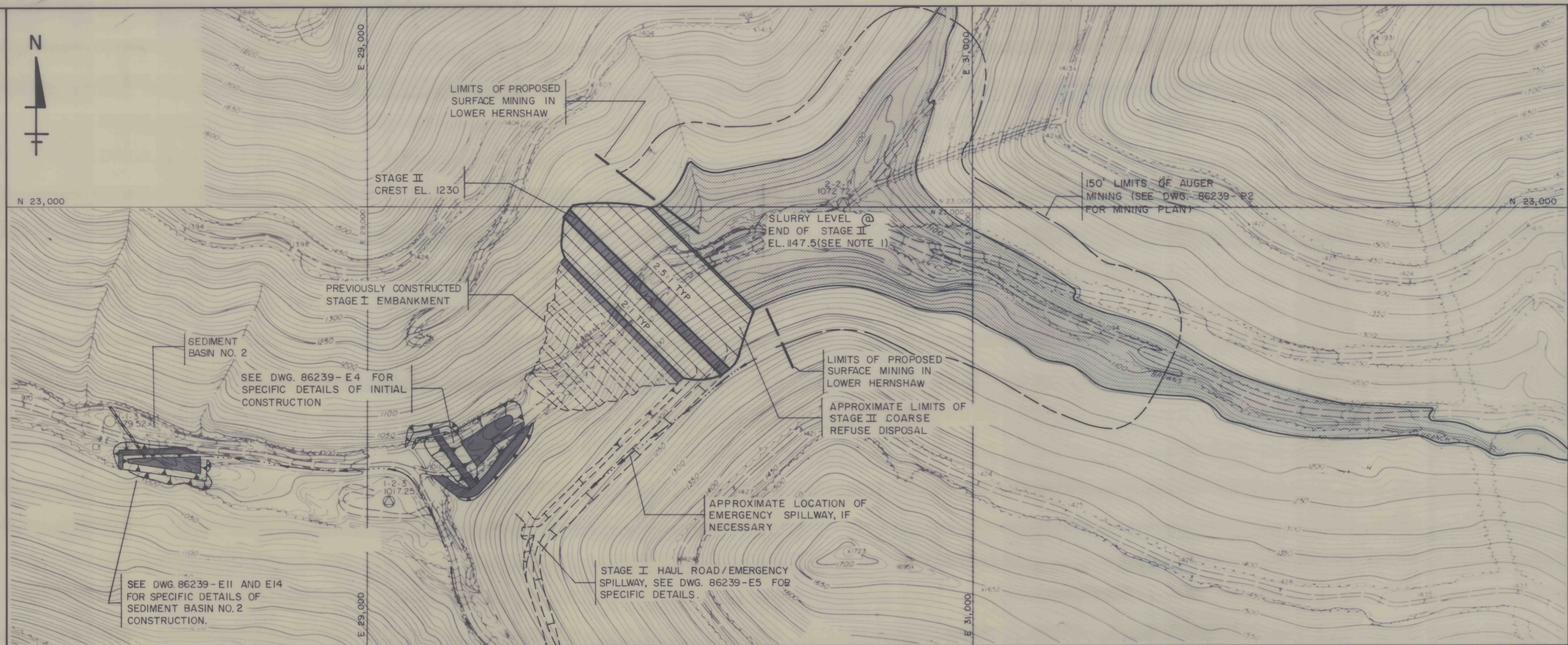
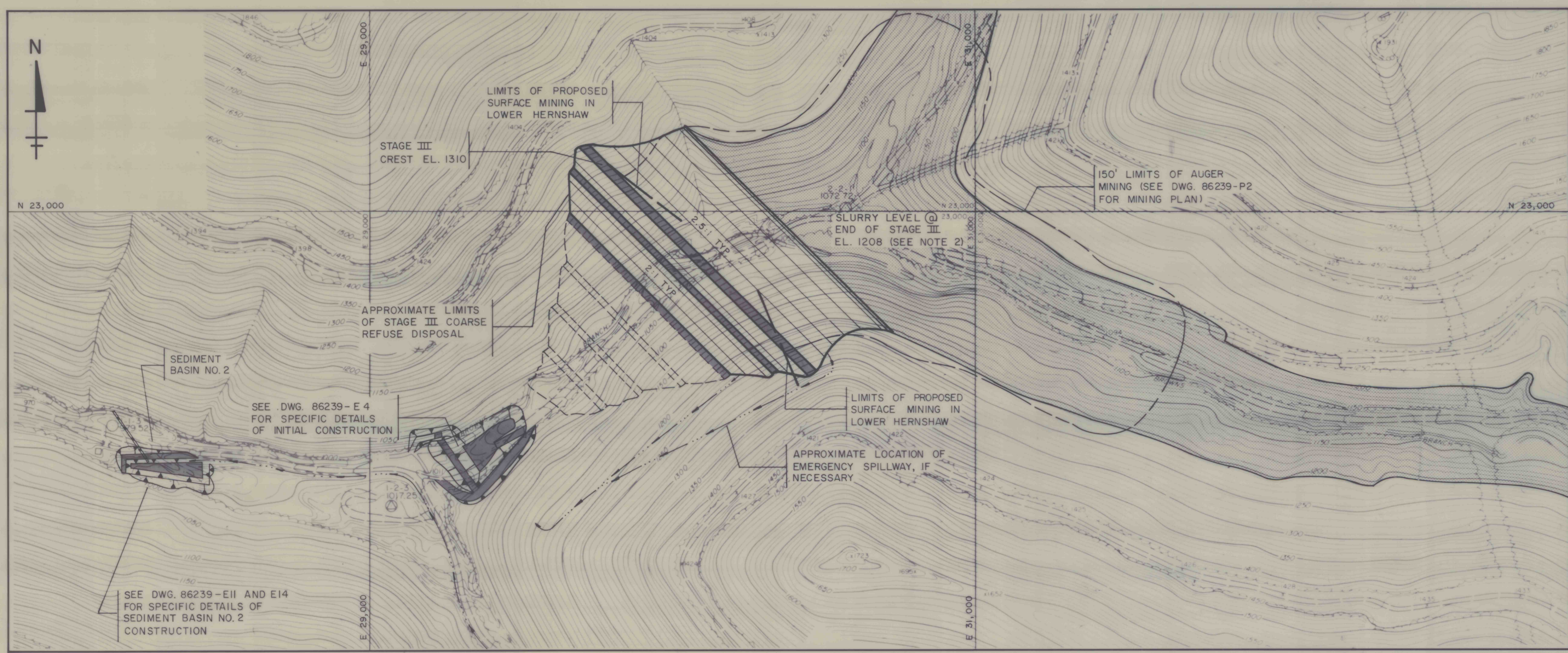


DATE	BY	REVISION	RECORD	DR	CR

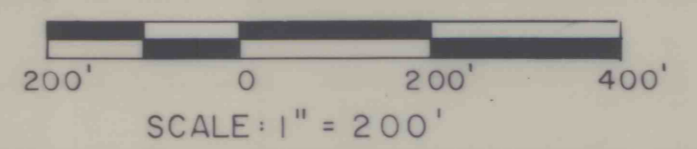


CONCEPTUAL PLAN - STAGE II



CONCEPTUAL PLAN - STAGE III

- NOTES:
- At the end of Stage II Embankment Construction total refuse may be pumped into the impoundment for approximately 4.3 years, raising the slurry level to approximately EL. 1205.
 - At the end of Stage III Embankment Construction, total refuse may be pumped into the impoundment for approximately 11.7 years, raising the slurry level to approximately EL. 1291.5.
 - See Dwg. 86239-E8 for Generalized Section through the Impoundment and Summary of Impoundment Staging.
 - See Dwg. 86239-E4 for Legend.



SRW ASSOCIATES INC.

SCALE: 1" = 200'
 DATE: AUG. 29, 1986
 APPROVED BY: *[Signature]*
 CHECKED BY: *[Signature]*
 DRAWN BY: M. MARKS
 BETHENERGY MINES CORPORATION
 WEST VIRGINIA DIVISION
 BROWN'S BRANCH IMPOUNDMENT
 BOONE COUNTY, WEST VIRGINIA
 CONCEPTUAL PLANS - FUTURE
 DEVELOPMENT STAGES II AND III
 SHEET NUMBER 7 of 17
 DRAWING NUMBER
 86239-E6