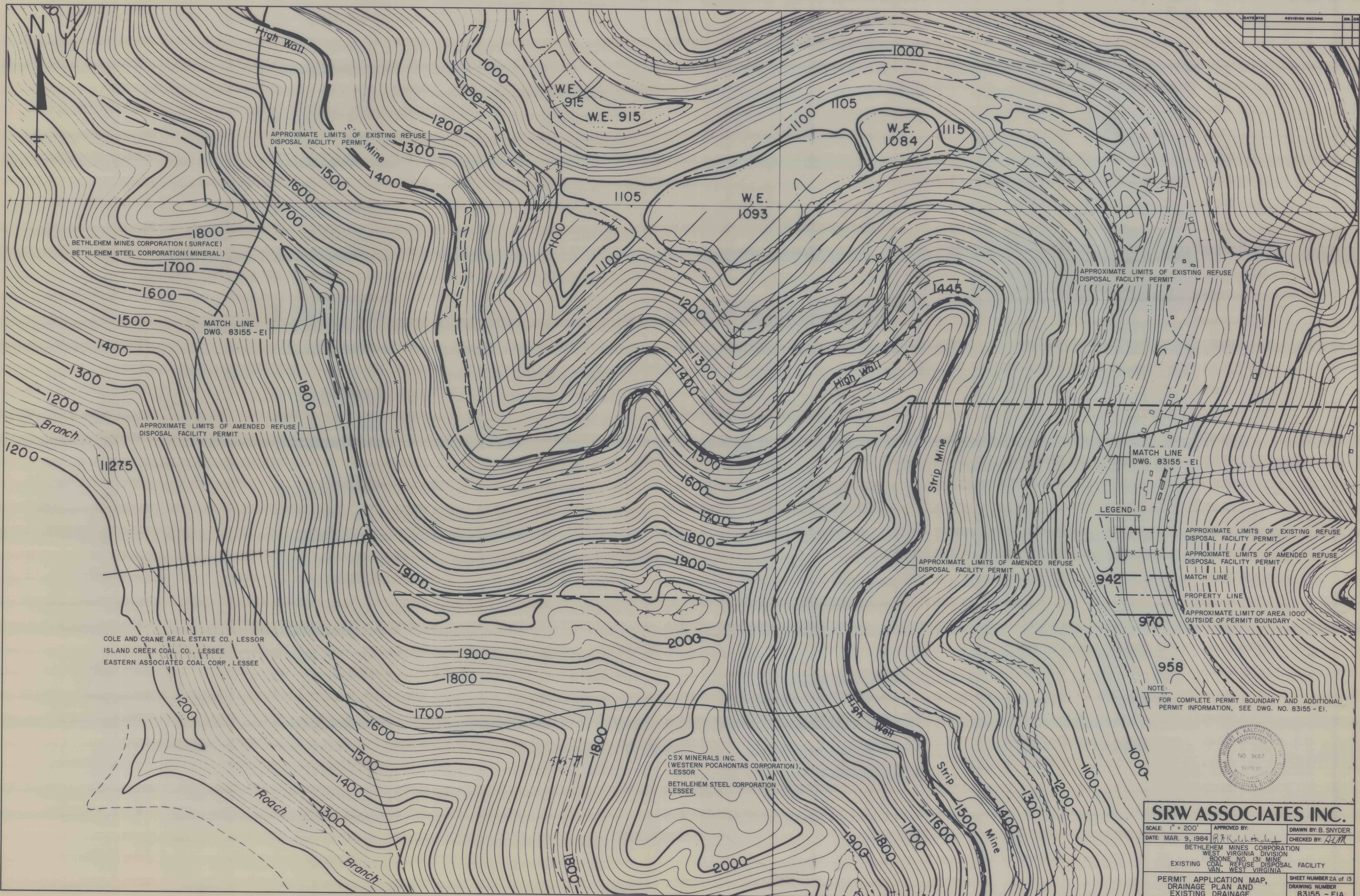


DATE	REVISION	BY	DR.



BETHLEHEM MINES CORPORATION (SURFACE)
BETHLEHEM STEEL CORPORATION (MINERAL)

MATCH LINE
DWG. 83155 - E1

APPROXIMATE LIMITS OF AMENDED REFUSE
DISPOSAL FACILITY PERMIT

COLE AND CRANE REAL ESTATE CO., LESSOR
ISLAND CREEK COAL CO., LESSEE
EASTERN ASSOCIATED COAL CORP., LESSEE

CSX MINERALS INC.
(WESTERN POCAHONTAS CORPORATION),
LESSOR
BETHLEHEM STEEL CORPORATION
LESSEE

APPROXIMATE LIMITS OF EXISTING REFUSE
DISPOSAL FACILITY PERMIT

MATCH LINE
DWG. 83155 - E1

LEGEND:

- APPROXIMATE LIMITS OF EXISTING REFUSE DISPOSAL FACILITY PERMIT
- - - APPROXIMATE LIMITS OF AMENDED REFUSE DISPOSAL FACILITY PERMIT
- MATCH LINE
- - - PROPERTY LINE
- - - APPROXIMATE LIMIT OF AREA 1000' OUTSIDE OF PERMIT BOUNDARY

NOTE:
FOR COMPLETE PERMIT BOUNDARY AND ADDITIONAL PERMIT INFORMATION, SEE DWG. NO. 83155 - E1.



SRW ASSOCIATES INC.

SCALE: 1" = 200'	APPROVED BY: <i>[Signature]</i>	DRAWN BY: B. SNYDER
DATE: MAR. 9, 1984	CHECKED BY: <i>[Signature]</i>	
BETHLEHEM MINES CORPORATION WEST VIRGINIA DIVISION BOONE NO. 131 MINE COAL REFUSE DISPOSAL FACILITY VAN, WEST VIRGINIA		
PERMIT APPLICATION MAP, DRAINAGE PLAN AND EXISTING DRAINAGE	SHEET NUMBER 2A of 13 DRAWING NUMBER 83155 - E1A	

FILE 12-5-115