

78-359-E11, E12, E13, E14, E15 / 02

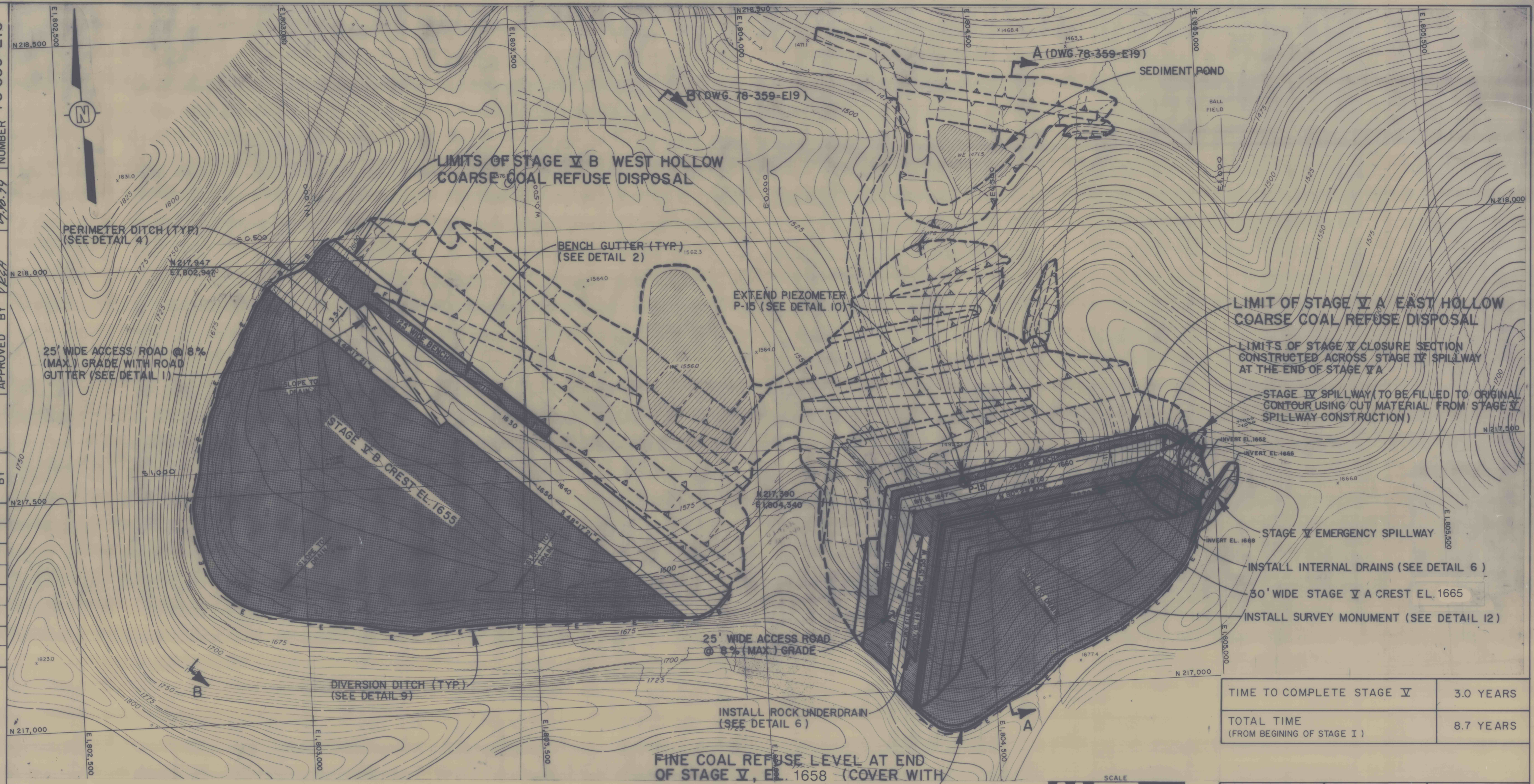
DRAWING NUMBER 78-359-E15

CHECKED BY TEJ
APPROVED BY PEA

DATE 5/16/79

DRAWN BY 2

2



REFERENCE:
CONTOUR MAP PREPARED BY
GREENHORNE AND O'MARA, INC. DATE
FLOWN, 8/21/78. SCALE: 1" = 100'

FINE COAL REFUSE LEVEL AT END
OF STAGE V, EL. 1658 (COVER WITH
FIVE FEET OF COARSE REFUSE AT
ABANDONMENT.)

TIME TO COMPLETE STAGE V	3.0 YEARS
TOTAL TIME (FROM BEGINNING OF STAGE I)	8.7 YEARS

DRAWING NO. 78-359-E15	SHEET NO.	FIGURE NO. 17
---------------------------	-----------	------------------

PLAN - STAGE V
EAST AND WEST HOLLOW
BETHLEHEM MINE No. 101
CENTURY, WEST VIRGINIA
PREPARED FOR
BETHLEHEM MINES CORPORATION
BRIDGEPORT, WEST VIRGINIA

D'APPOLONIA

REVISED 01-05-1990

15-15-16