

78-359-E11, E12, E13, E14, E15 / 02

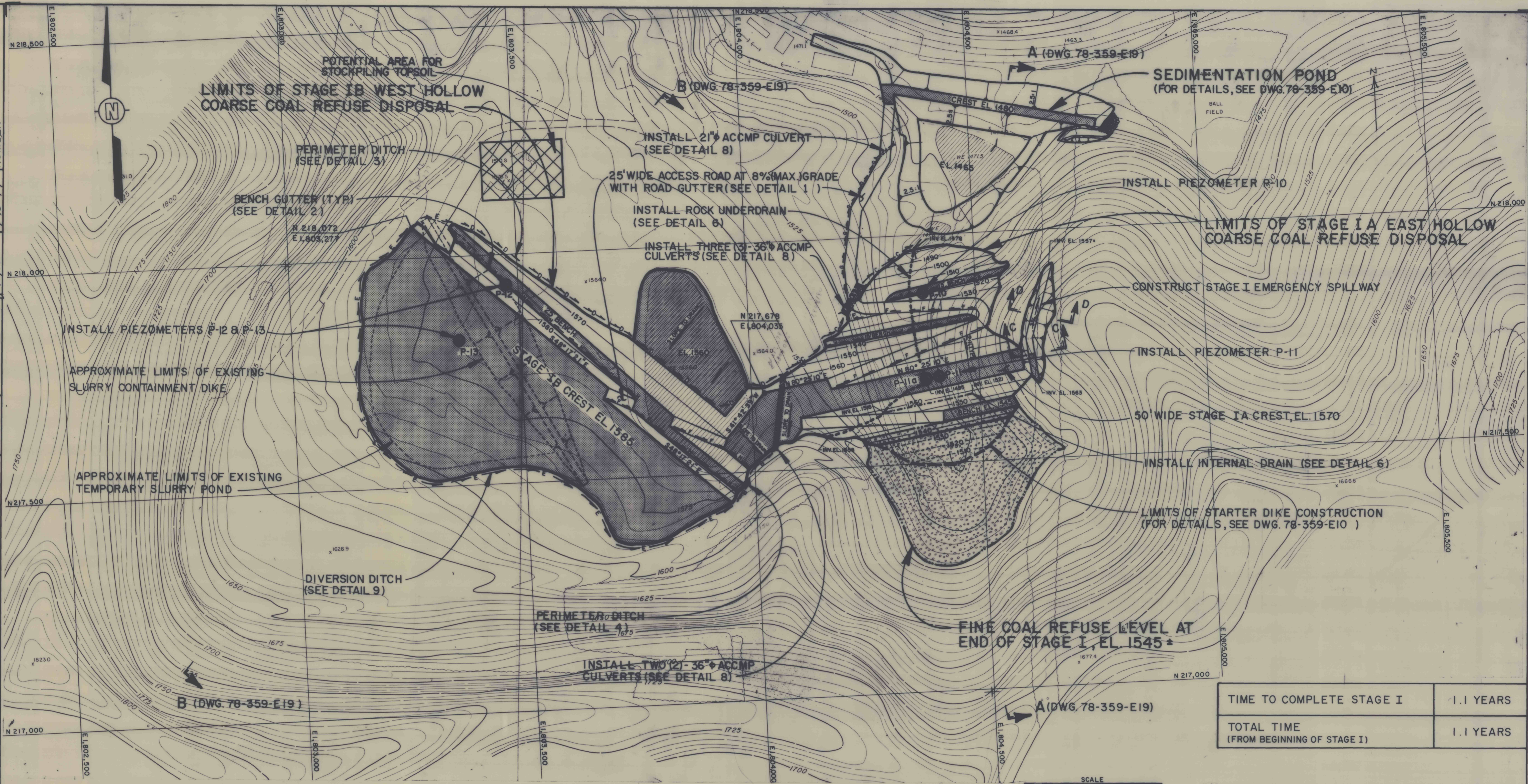
DRAWING NUMBER 78-359-E11

CHECKED BY 5/14/79

APPROVED BY 4/26/79

DRAWN BY dam 4-26-79

2



TIME TO COMPLETE STAGE I	1.1 YEARS
TOTAL TIME (FROM BEGINNING OF STAGE I)	1.1 YEARS

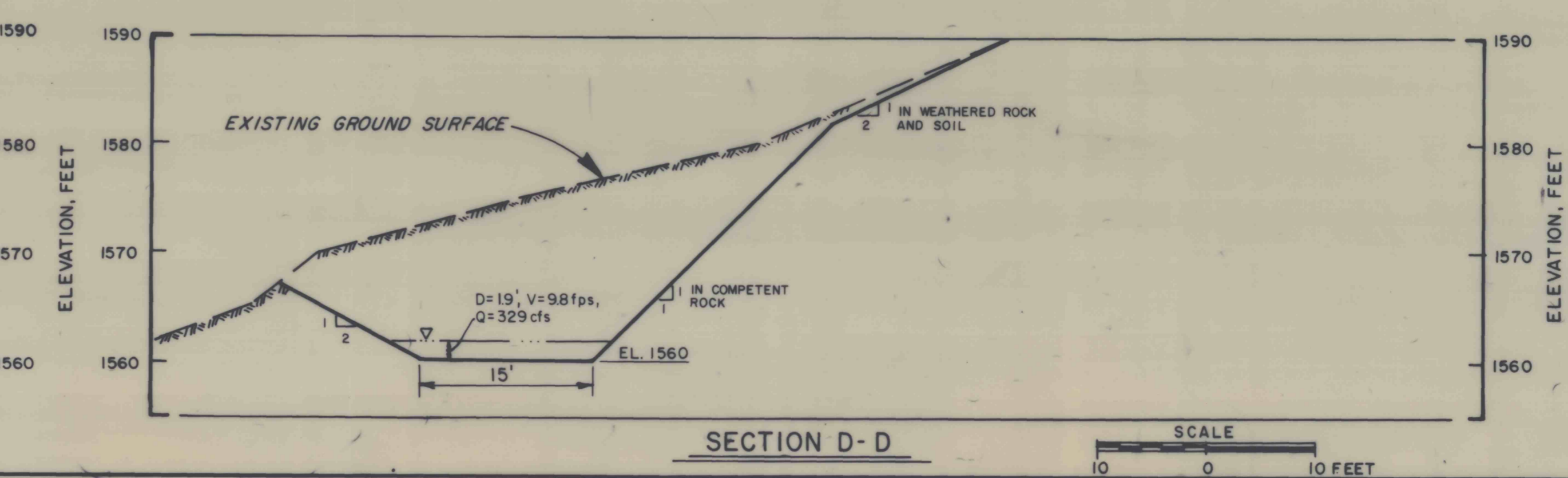
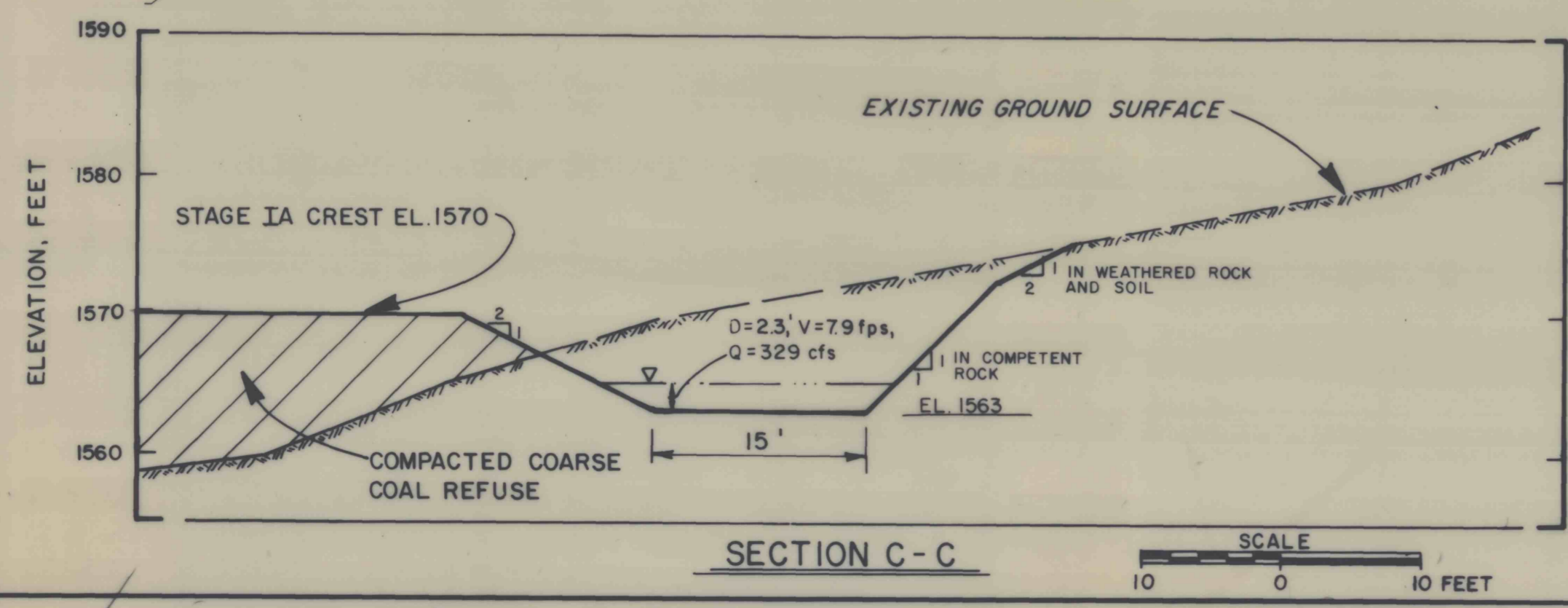
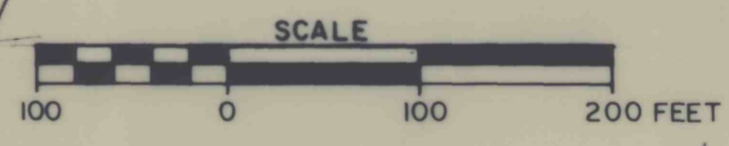
DRAWING NO. 78-359-E11	SHEET NO.	FIGURE NO. 13
---------------------------	-----------	------------------

PLAN - STAGE I
EAST AND WEST HOLLOW
BETHLEHEM MINE No. 101
CENTURY, WEST VIRGINIA
PREPARED FOR
BETHLEHEM MINES CORPORATION
BRIDGEPORT, WEST VIRGINIA

D'APPOLONIA

REFERENCE:
CONTOUR MAP PREPARED BY
GREENHORNE AND O'MARA, INC. DATE
FLOWN, 8/21/78. SCALE: 1" = 100'

NOTE: PIEZOMETER P-11a IS INSTALLED IN UNDERDRAIN,
P-11 OUTSIDE THE UNDERDRAIN BUT NEAR IT.



15-15-12