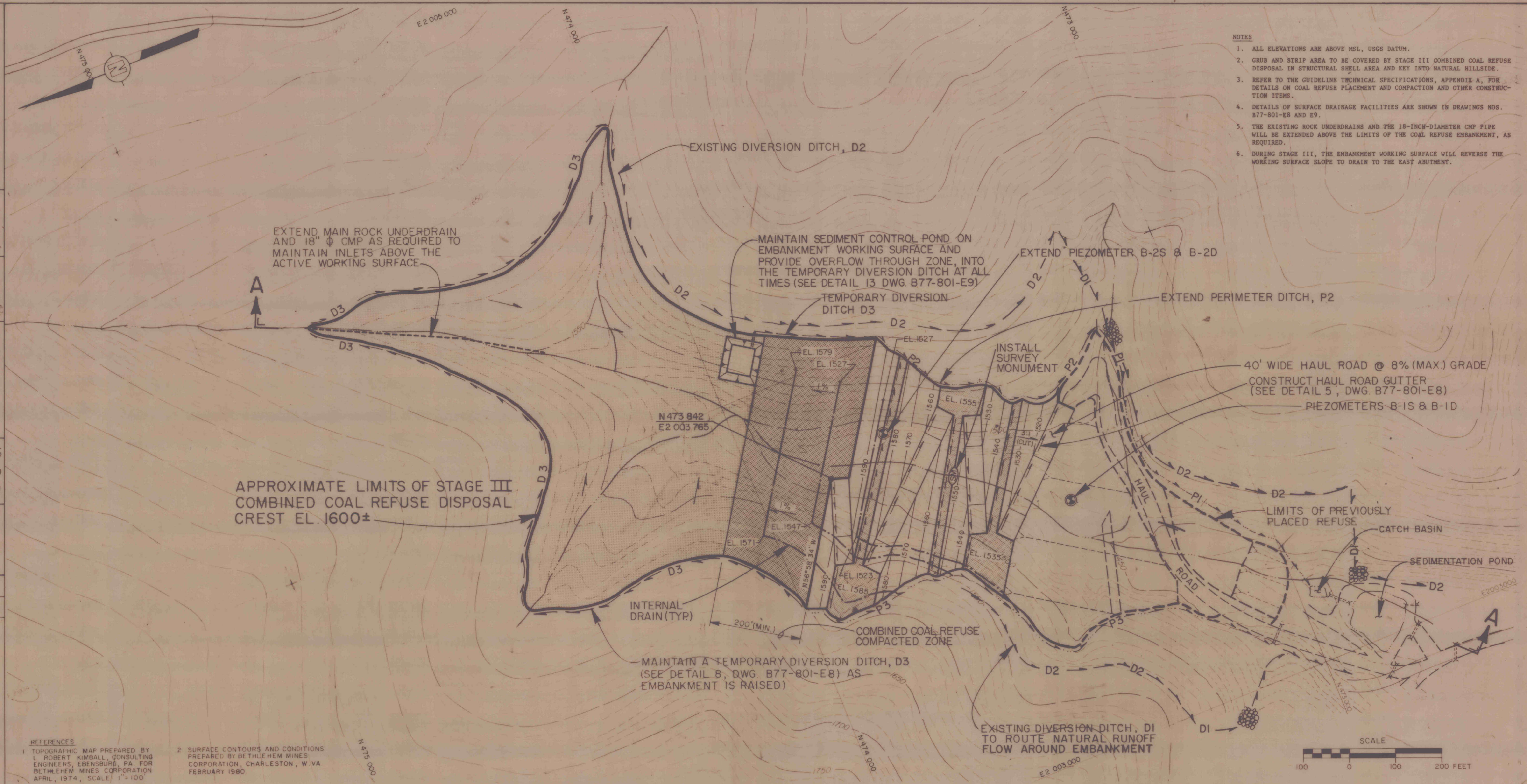


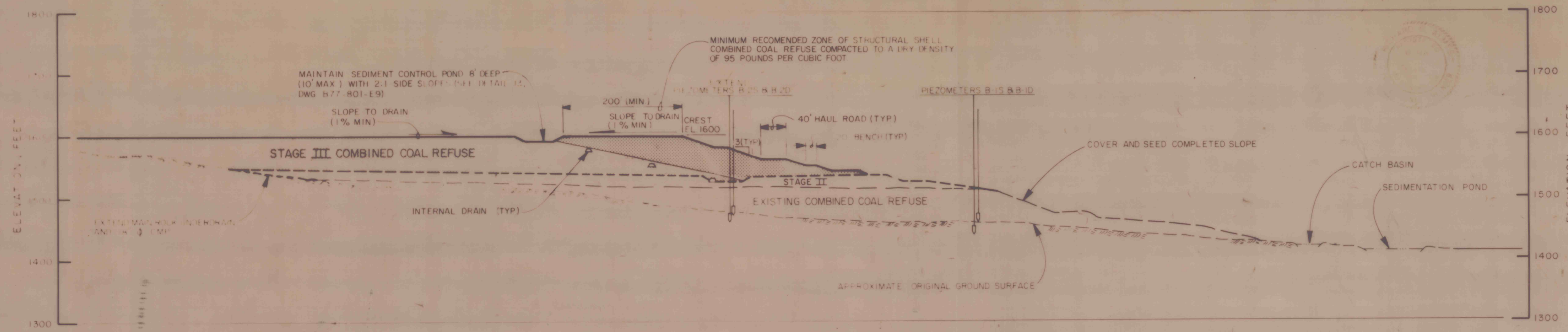
NOTES

1. ALL ELEVATIONS ARE ABOVE MSL, USGS DATUM.
2. GRUB AND STRIP AREA TO BE COVERED BY STAGE III COMBINED COAL REFUSE DISPOSAL IN STRUCTURAL SHELL AREA AND KEY INTO NATURAL HILLSIDE.
3. REFER TO THE GUIDELINE TECHNICAL SPECIFICATIONS, APPENDIX A, FOR DETAILS ON COAL REFUSE PLACEMENT AND COMPACTION AND OTHER CONSTRUCTION ITEMS.
4. DETAILS OF SURFACE DRAINAGE FACILITIES ARE SHOWN IN DRAWINGS NOS. B77-801-E8 AND E9.
5. THE EXISTING ROCK UNDERDRAINS AND THE 18-INCH-DIAMETER CMP PIPE WILL BE EXTENDED ABOVE THE LIMITS OF THE COAL REFUSE EMBANKMENT, AS REQUIRED.
6. DURING STAGE III, THE EMBANKMENT WORKING SURFACE WILL REVERSE THE WORKING SURFACE SLOPE TO DRAIN TO THE EAST ABUTMENT.



REFERENCES

1. TOPOGRAPHIC MAP PREPARED BY L. ROBERT KIMBALL, CONSULTING ENGINEERS, EBENSBURG, PA FOR BETHLEHEM MINES CORPORATION APRIL, 1974, SCALE 1"=100'
2. SURFACE CONTOURS AND CONDITIONS PREPARED BY BETHLEHEM MINES CORPORATION, CHARLESTON, W VA FEBRUARY 1980



SECTION A-A

REVISION
△ MODIFIED SURFACE DRAINAGE FACILITIES D1 & D2 & P1, AND STILLING AREAS

DRAWING NO. B77-801-E16	SHEET NO. 5 of 12	FIGURE NO. 9
-----------------------------------	-----------------------------	------------------------

STAGE III
 COAL REFUSE DISPOSAL FACILITY
 MINE NO. 81
 BETHLEHEM MINES CORPORATION
 DRENNEN, WEST VIRGINIA

PREPARED FOR
 BETHLEHEM MINES CORPORATION
 NICHOLAS DIVISION
 CHARLESTON, WEST VIRGINIA

D'APPOLONIA