

DRAWING NUMBER B77-801-E6

CHECKED BY

APPROVED BY

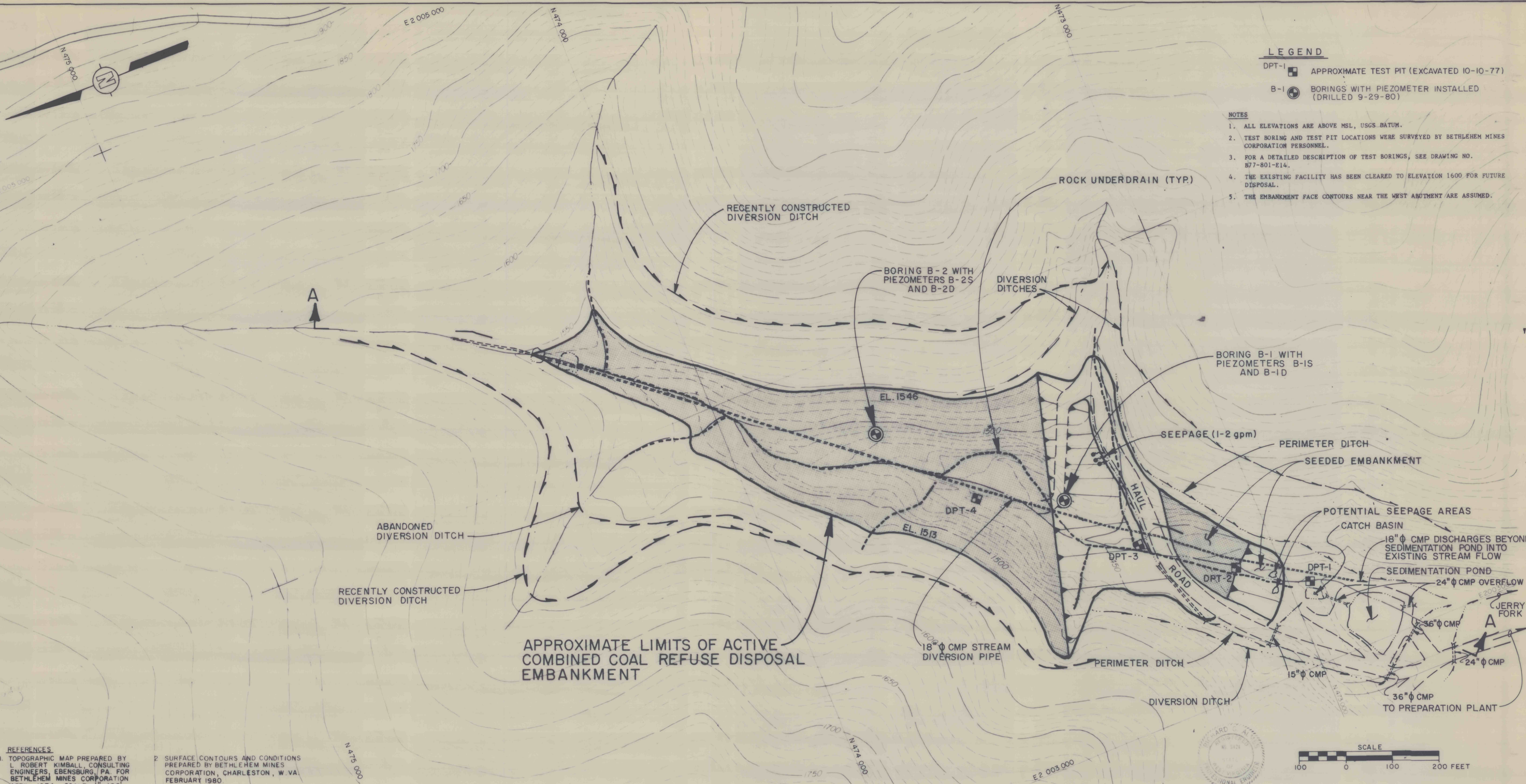
dam

11/18/80

DRAWN BY

23

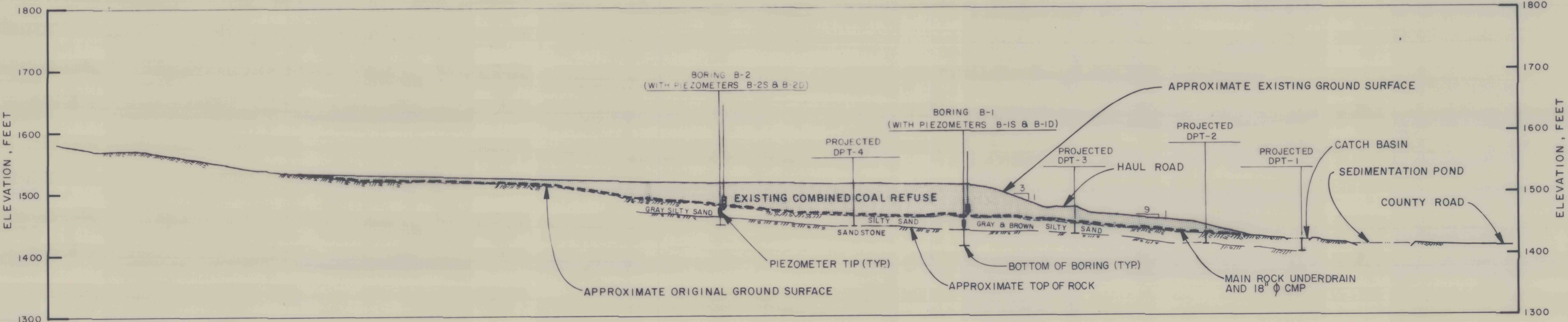
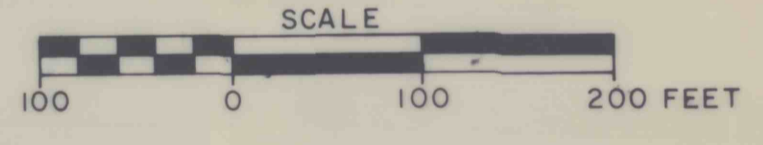
23



- LEGEND**
- DPT-1 [Symbol] APPROXIMATE TEST PIT (EXCAVATED 10-10-77)
  - B-1 [Symbol] BORINGS WITH PIEZOMETER INSTALLED (DRILLED 9-29-80)

- NOTES**
1. ALL ELEVATIONS ARE ABOVE MSL, USGS DATUM.
  2. TEST BORING AND TEST PIT LOCATIONS WERE SURVEYED BY BETHLEHEM MINES CORPORATION PERSONNEL.
  3. FOR A DETAILED DESCRIPTION OF TEST BORINGS, SEE DRAWING NO. B77-801-E14.
  4. THE EXISTING FACILITY HAS BEEN CLEARED TO ELEVATION 1600 FOR FUTURE DISPOSAL.
  5. THE EMBANKMENT FACE CONTOURS NEAR THE WEST ABUTMENT ARE ASSUMED.

- REFERENCES**
1. TOPOGRAPHIC MAP PREPARED BY L. ROBERT KIMBALL CONSULTING ENGINEERS, EBENSBURG, PA. FOR BETHLEHEM MINES CORPORATION APRIL, 1974, SCALE 1"=100'
  2. SURFACE CONTOURS AND CONDITIONS PREPARED BY BETHLEHEM MINES CORPORATION, CHARLESTON, W. VA. FEBRUARY 1980



**SECTION A-A**

DRAWING NO. <b>B77-801-E6</b>	SHEET NO. <b>2 of 12</b>	FIGURE NO. <b>3</b>
----------------------------------	-----------------------------	------------------------

**EXISTING CONDITIONS**  
 COAL REFUSE DISPOSAL FACILITY  
 MINE NO. 81  
 BETHLEHEM MINES CORPORATION  
 DRENNEN, WEST VIRGINIA

PREPARED FOR  
**BETHLEHEM MINES CORPORATION**  
 NICHOLAS DIVISION  
 CHARLESTON, WEST VIRGINIA

**D'APPOLONIA**