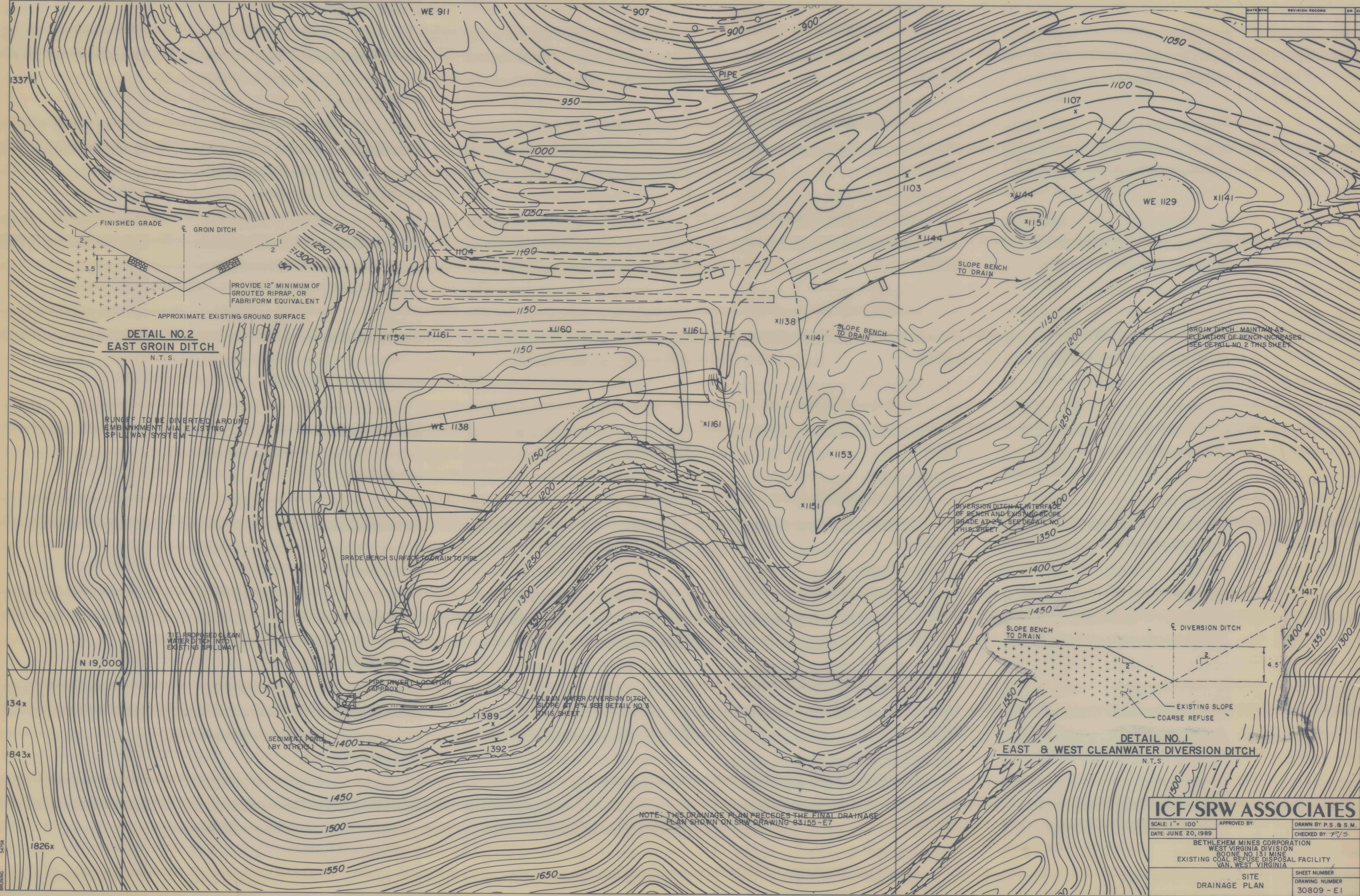
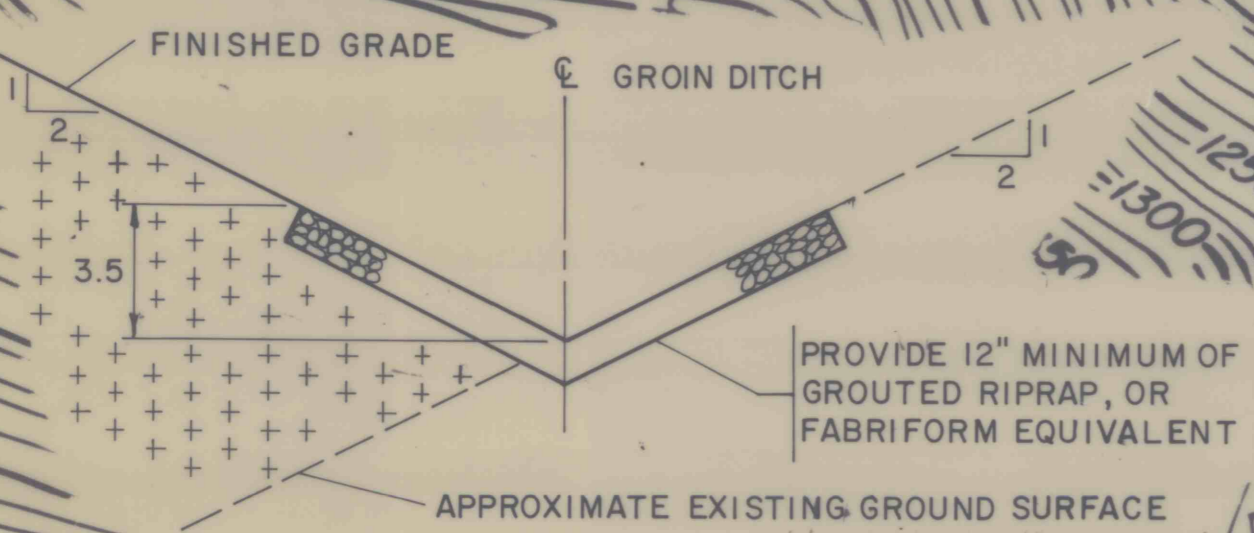


DATE	BY	REVISION	RECORD	DR	CR



**DETAIL NO. 2**  
**EAST GROIN DITCH**  
 N.T.S.

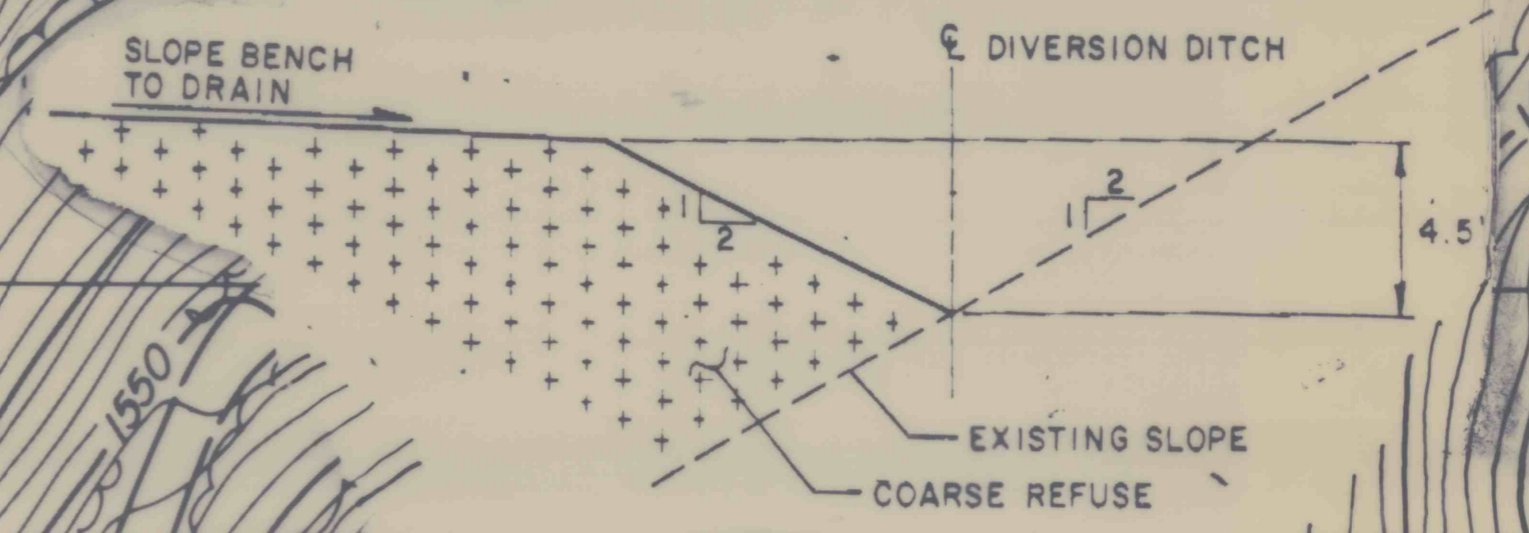


RUNOFF TO BE DIVERTED AROUND EMBANKMENT VIA EXISTING SPILLWAY SYSTEM

GROIN DITCH MAINTAIN AS ELEVATION OF BENCH INCREASES SEE DETAIL NO. 2 THIS SHEET

DIVERSION DITCH AT INTERFACE OF BENCH AND EXISTING SLOPE GRADE AT 2% SEE DETAIL NO. 1 THIS SHEET

**DETAIL NO. 1**  
**EAST & WEST CLEANWATER DIVERSION DITCH**  
 N.T.S.



CLEAN WATER DIVERSION DITCH SLOPE AT 2% SEE DETAIL NO. 3 THIS SHEET

NOTE: THIS DRAINAGE PLAN PRECEDES THE FINAL DRAINAGE PLAN SHOWN ON SRW DRAWING 83155-E7

<b>ICF/SRW ASSOCIATES</b>		
SCALE: 1" = 100'	APPROVED BY:	DRAWN BY: P.S. & S.M.
DATE: JUNE 20, 1989	CHECKED BY: F/5	
BETHLEHEM MINES CORPORATION WEST VIRGINIA DIVISION BOONE NO. 131 MINE EXISTING COAL REFUSE DISPOSAL FACILITY VAN, WEST VIRGINIA		
SITE DRAINAGE PLAN	SHEET NUMBER DRAWING NUMBER 30809 - E1	

FILE 12-5-127

DRAWING 54728