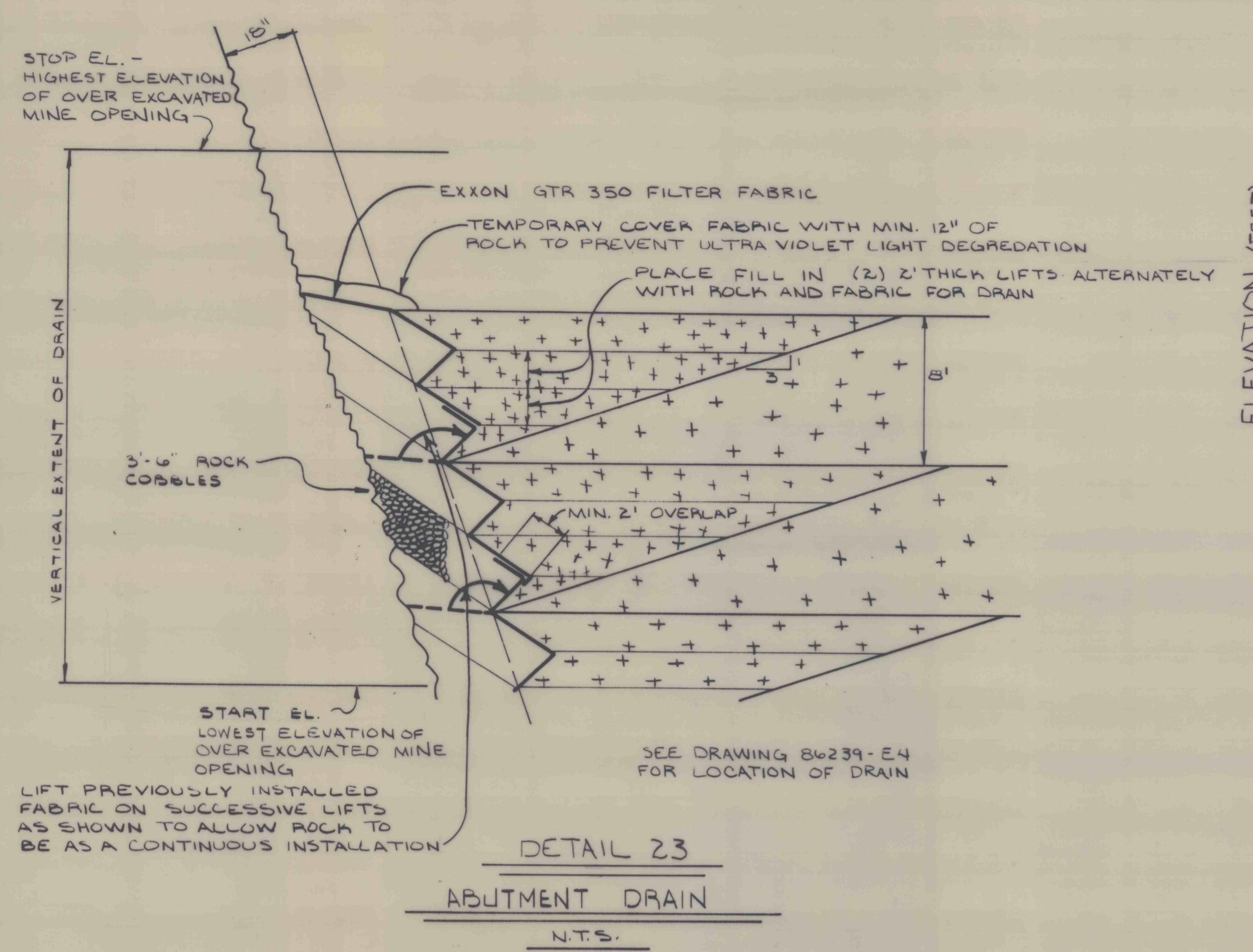
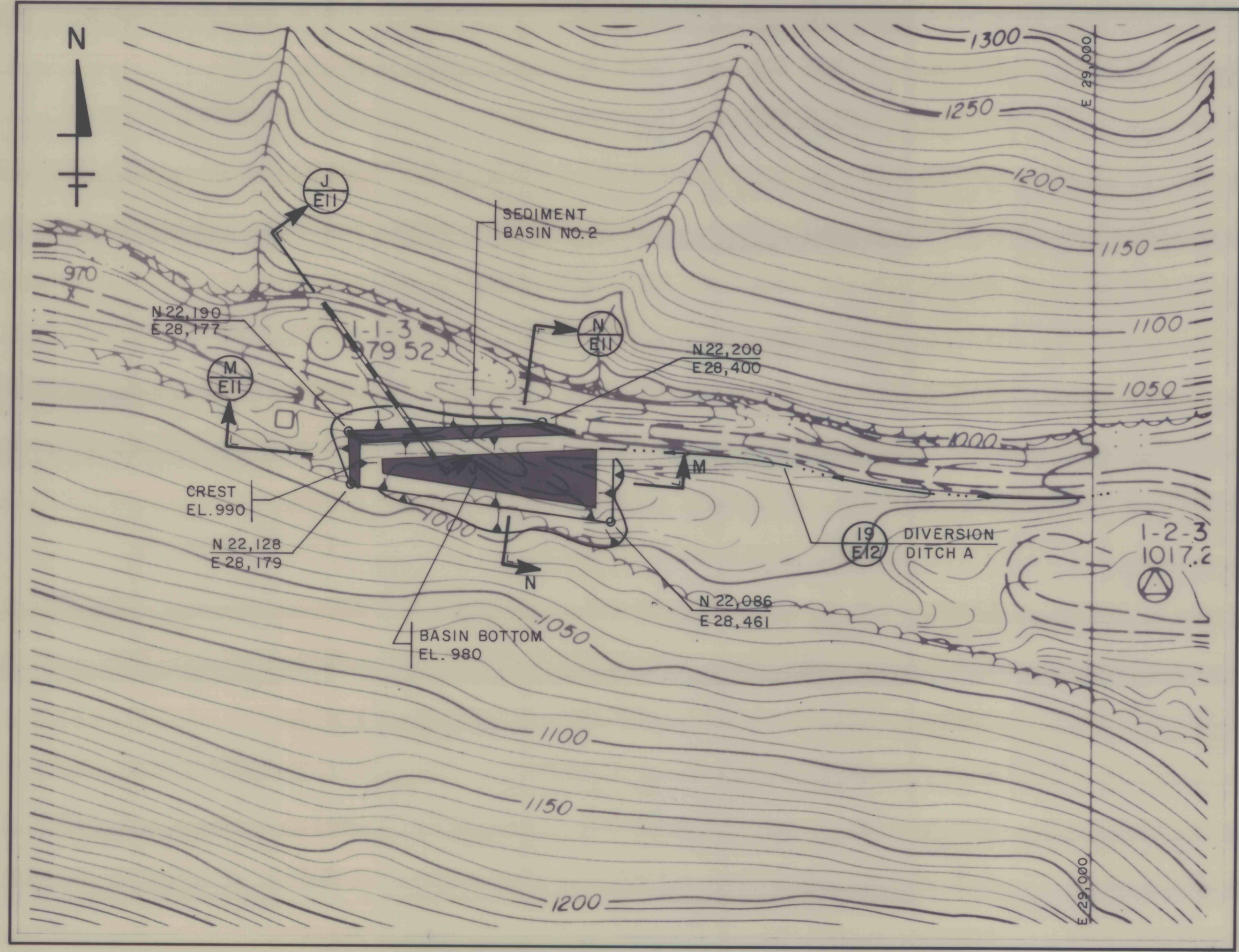


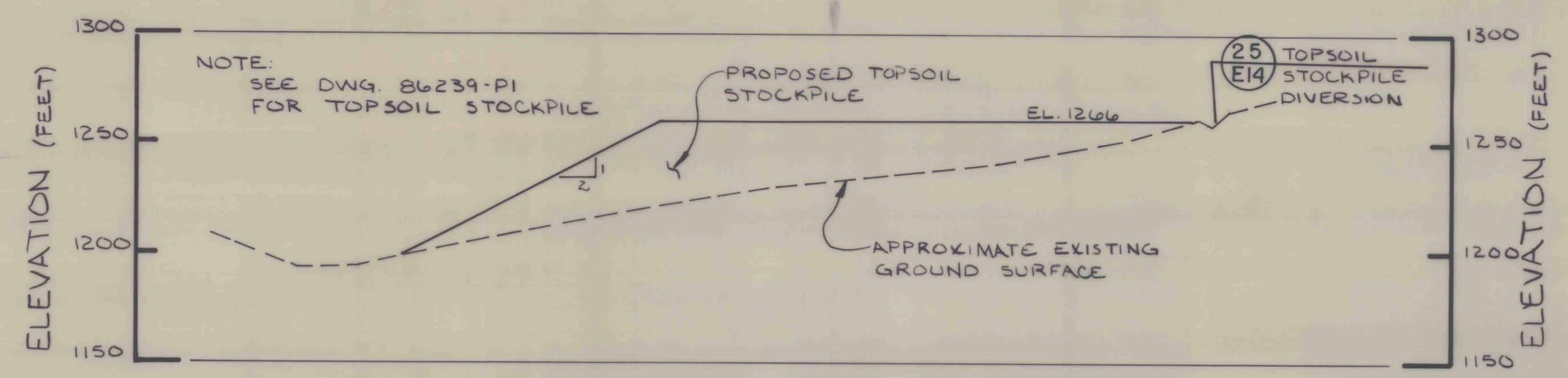
DATE	BY	REVISION RECORD	DR.	CK.



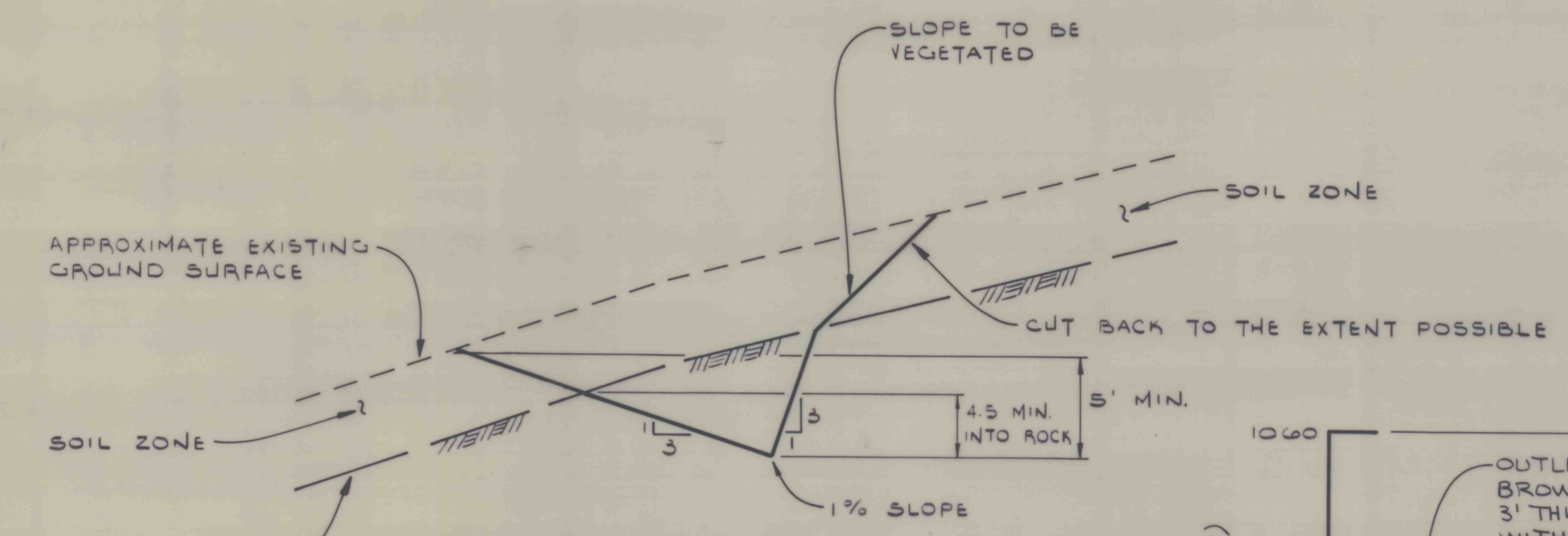
DETAIL 23
ABUTMENT DRAIN
N.T.S.



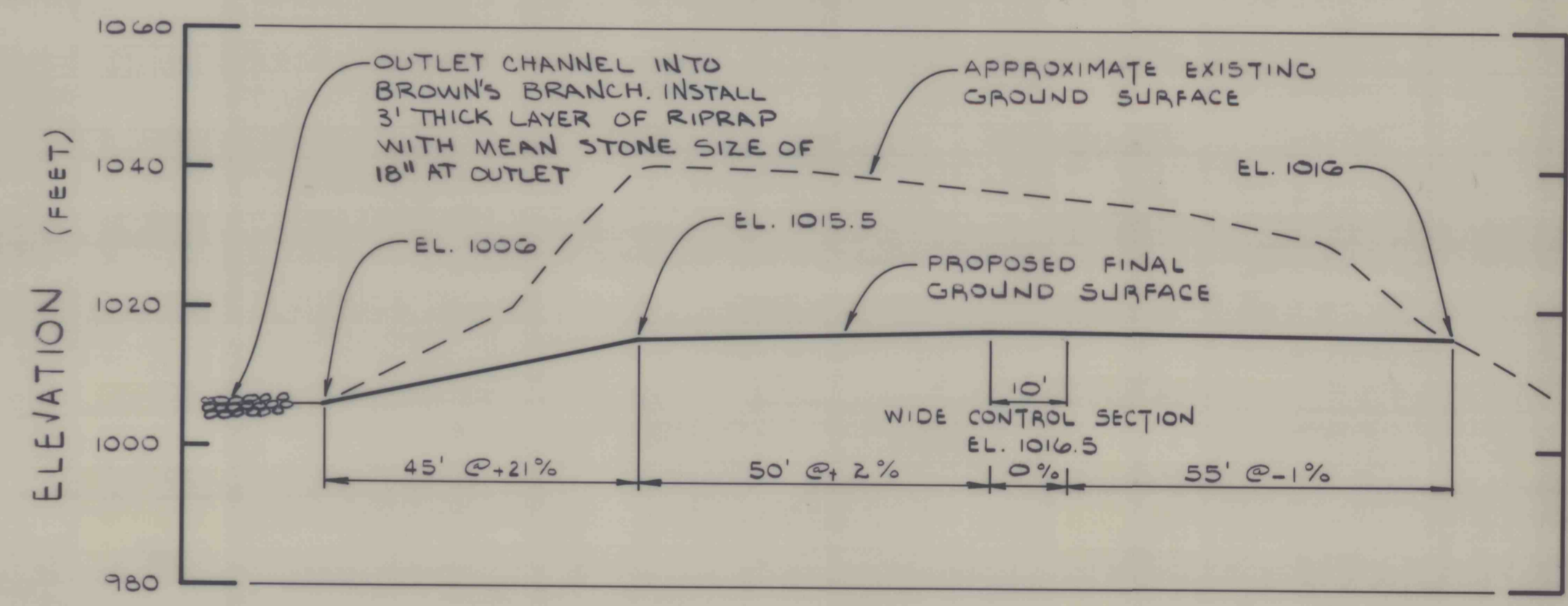
SEDIMENT BASIN No. 2 PLAN
SCALE: 1" = 100'



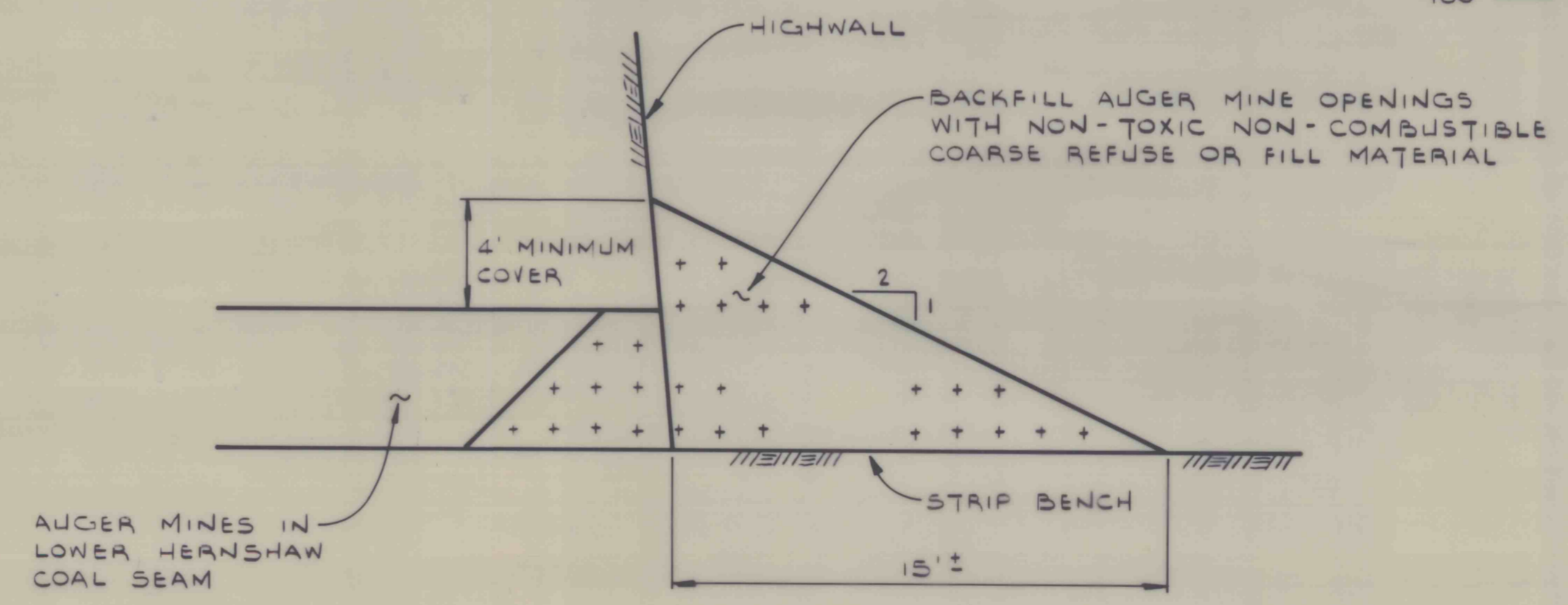
DETAIL 24
PROPOSED TOPSOIL STOCKPILE AREA
SCALE: 1" = 50'



DETAIL 25
TOPSOIL STOCKPILE DIVERSION DITCH
N.T.S.



PROFILE - SEDIMENT BASIN NO. 1, SPILLWAY OUTLET CHANNEL
SCALE: 1" = 20'



DETAIL 26
AUGER MINE SEAL
N.T.S.

SRW ASSOCIATES INC.

SCALE: AS NOTED	APPROVED BY: <i>[Signature]</i>	DRAWN BY: M. MARKS
DATE: SEPT. 10, 1986	CHECKED BY: <i>[Signature]</i>	

BETHENERGY MINES CORPORATION
WEST VIRGINIA DIVISION
BROWN'S BRANCH IMPOUNDMENT
BOONE COUNTY, WEST VIRGINIA

DETAILS 23 THROUGH 26 AND SEDIMENT BASIN NO. 2 CONSTRUCTION DETAILS	SHEET NUMBER 15 of 17 DRAWING NUMBER 86239 - E14
---	--