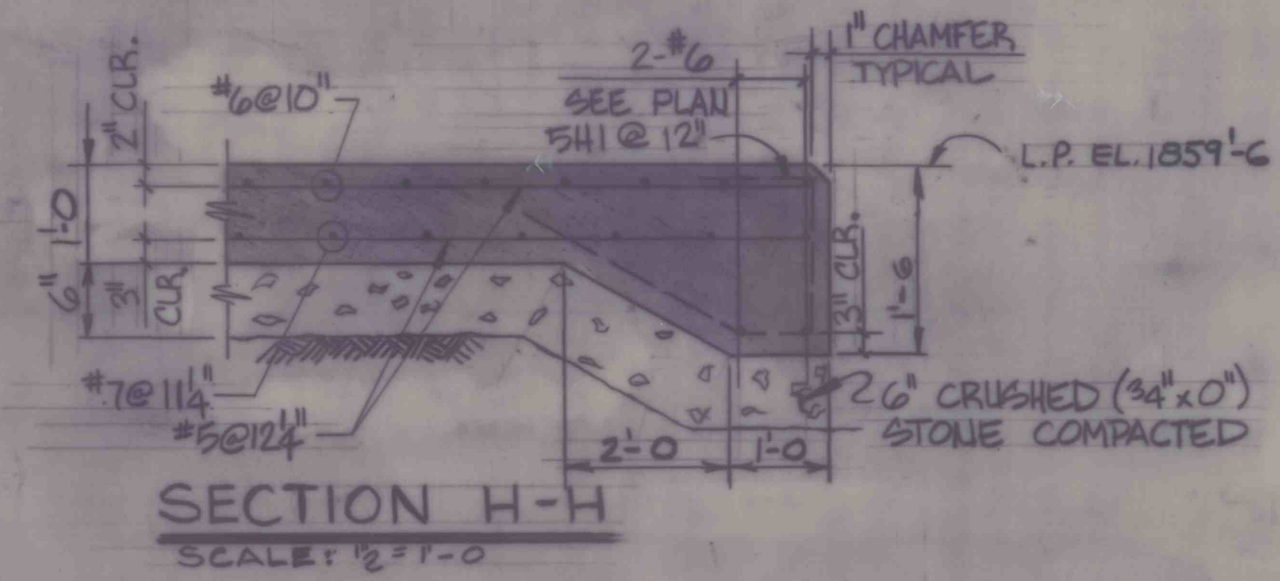
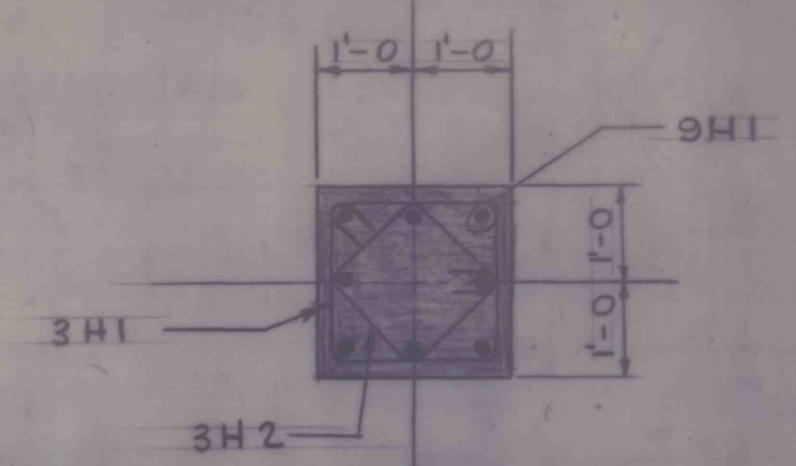


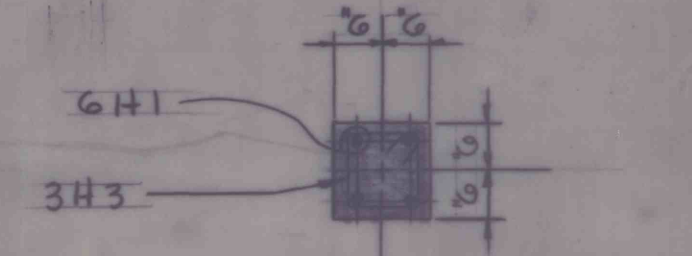
**FOUNDATION PLAN**



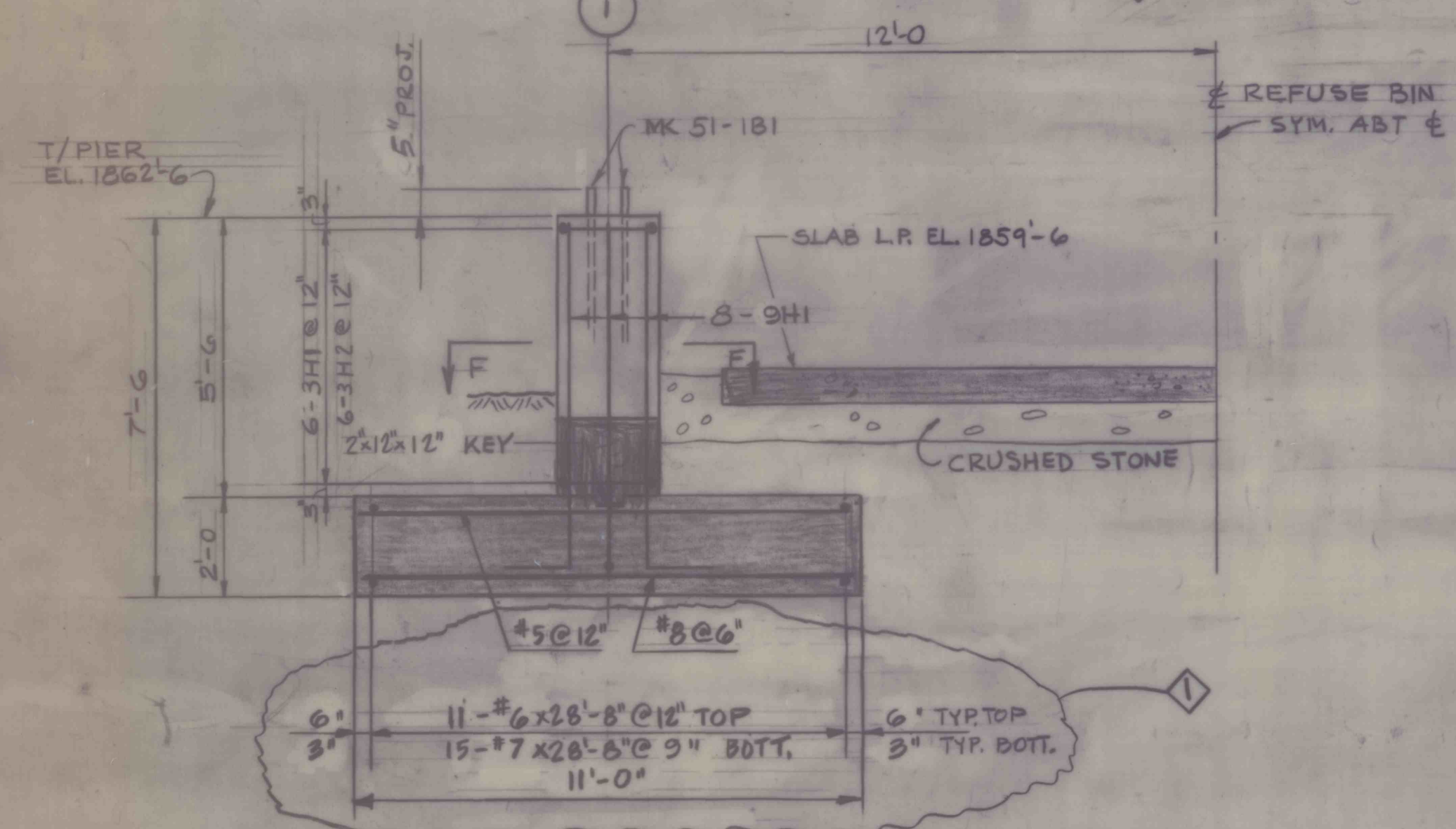
**SECTION H-H**  
SCALE: 1/2" = 1'-0"



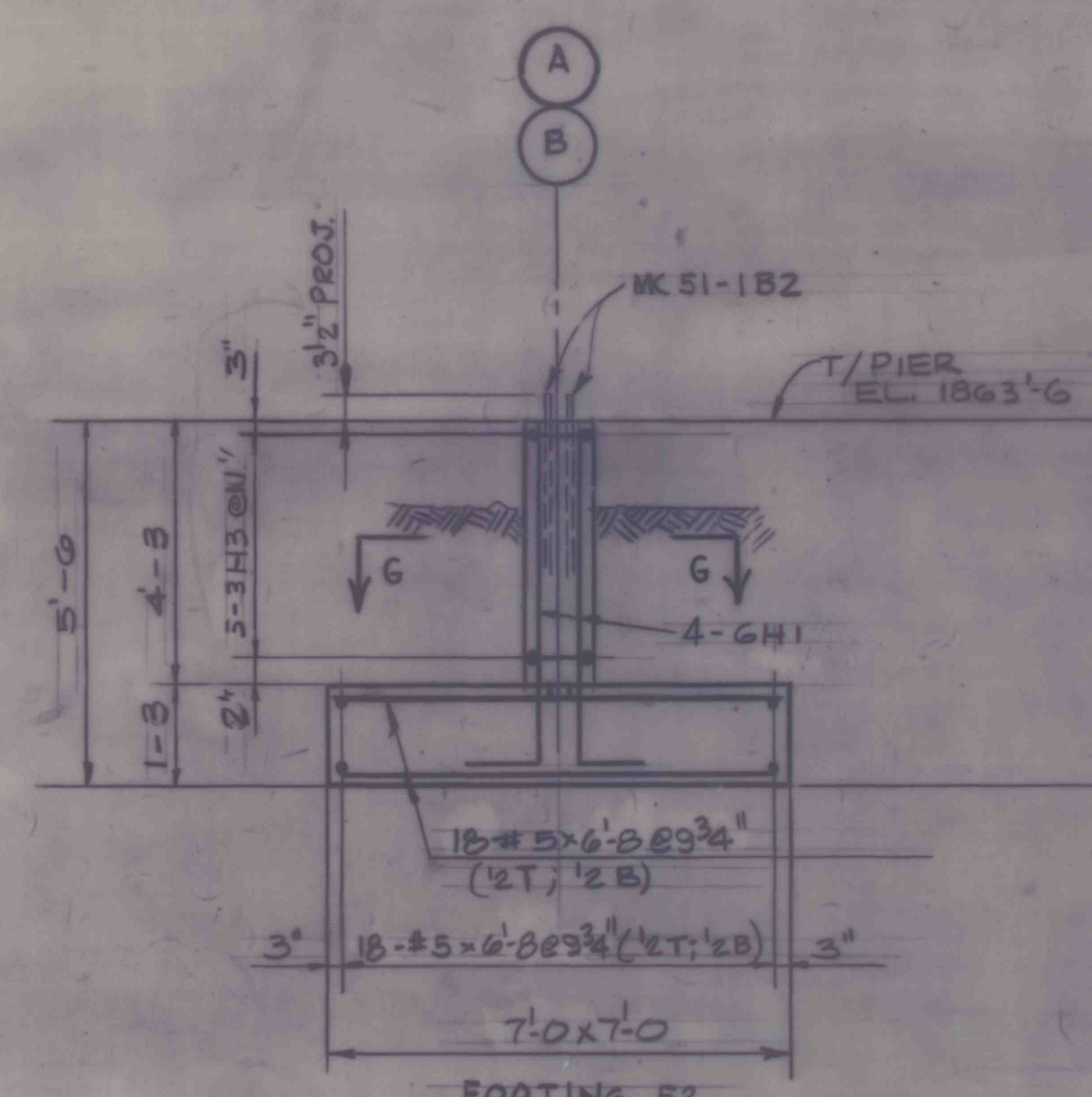
**SECTION F-F**  
SCALE: 1/2" = 1'-0"



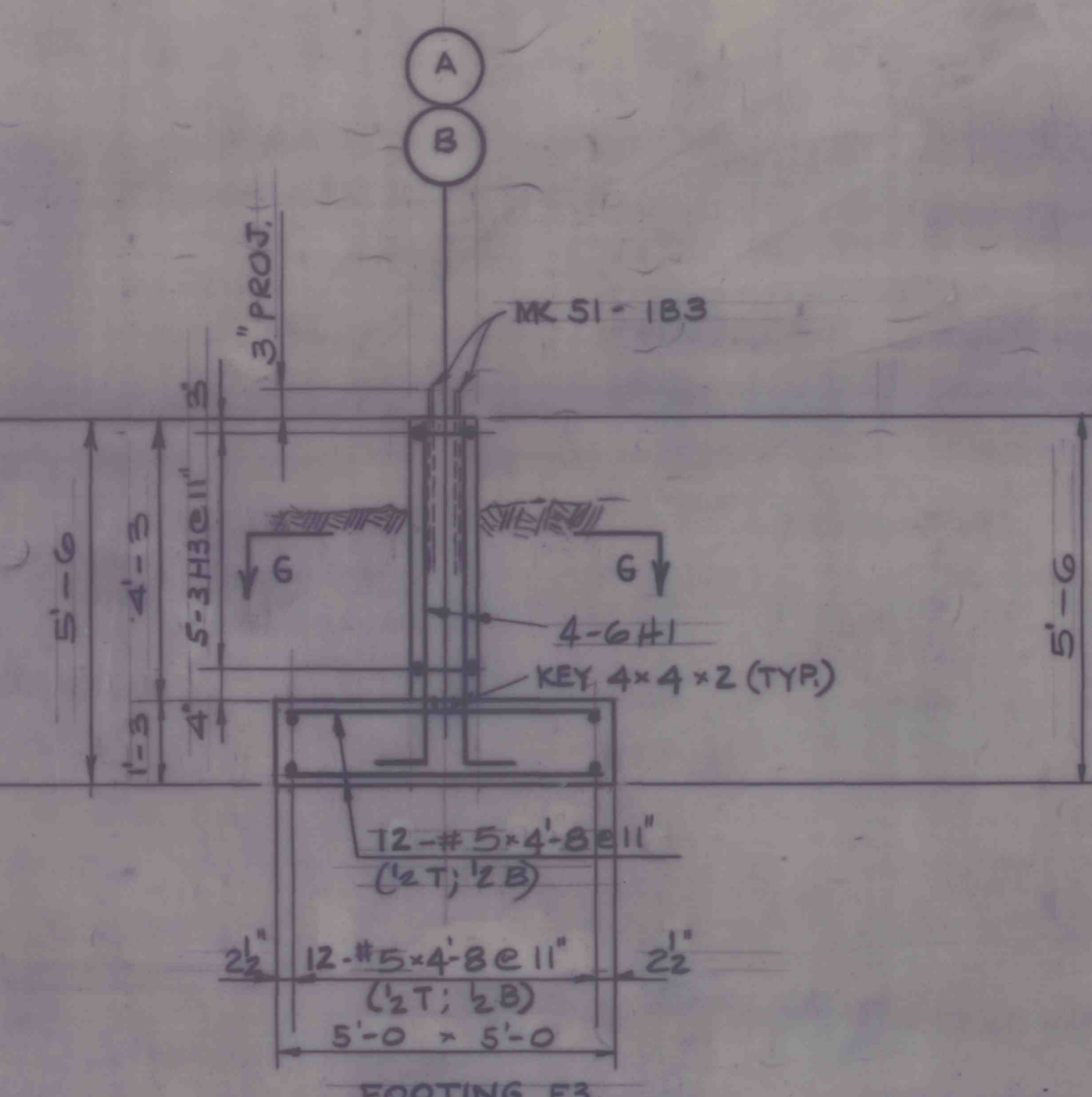
**SECTION G-G**  
SCALE: 1/2" = 1'-0"



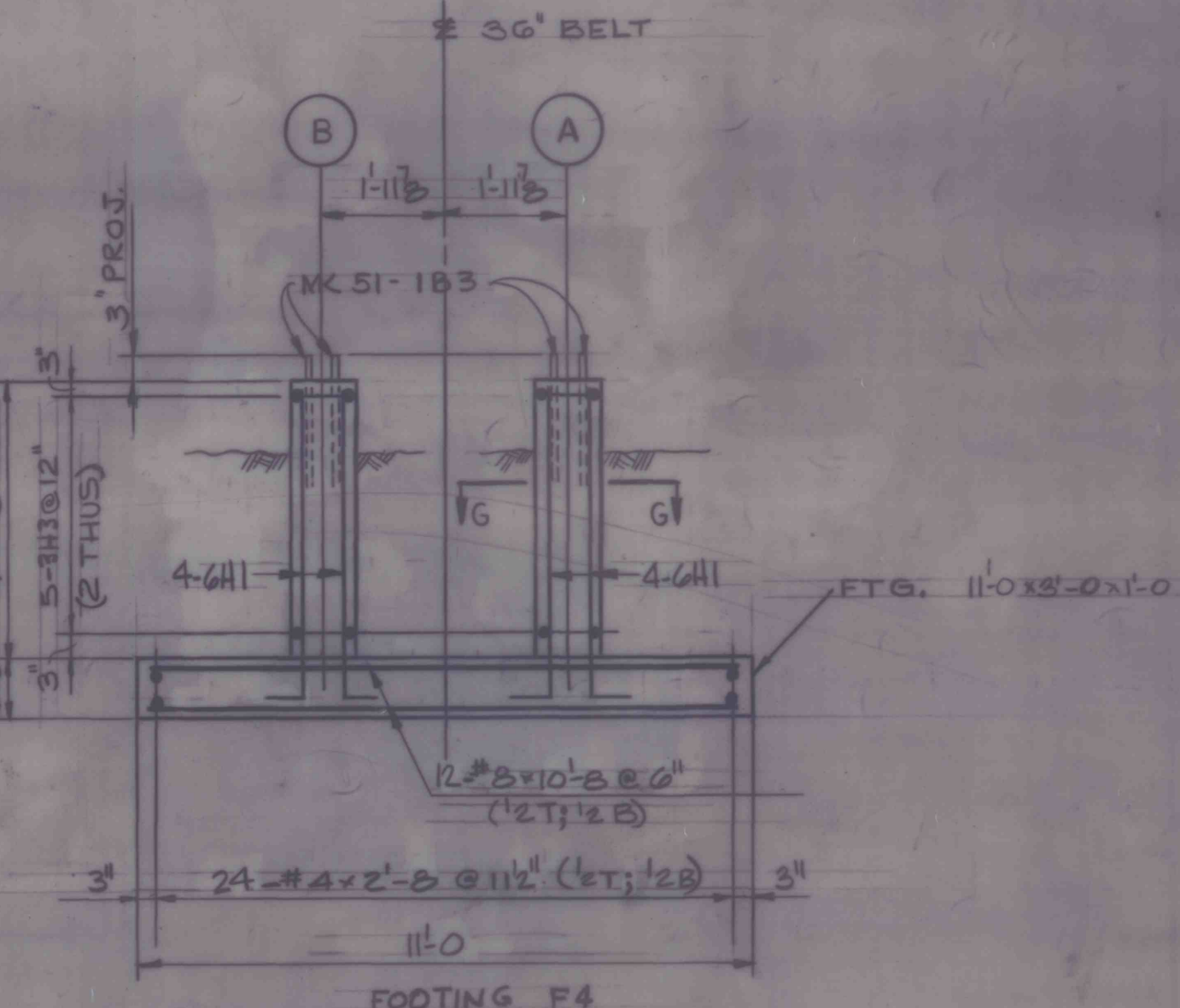
**SECTION A-A**



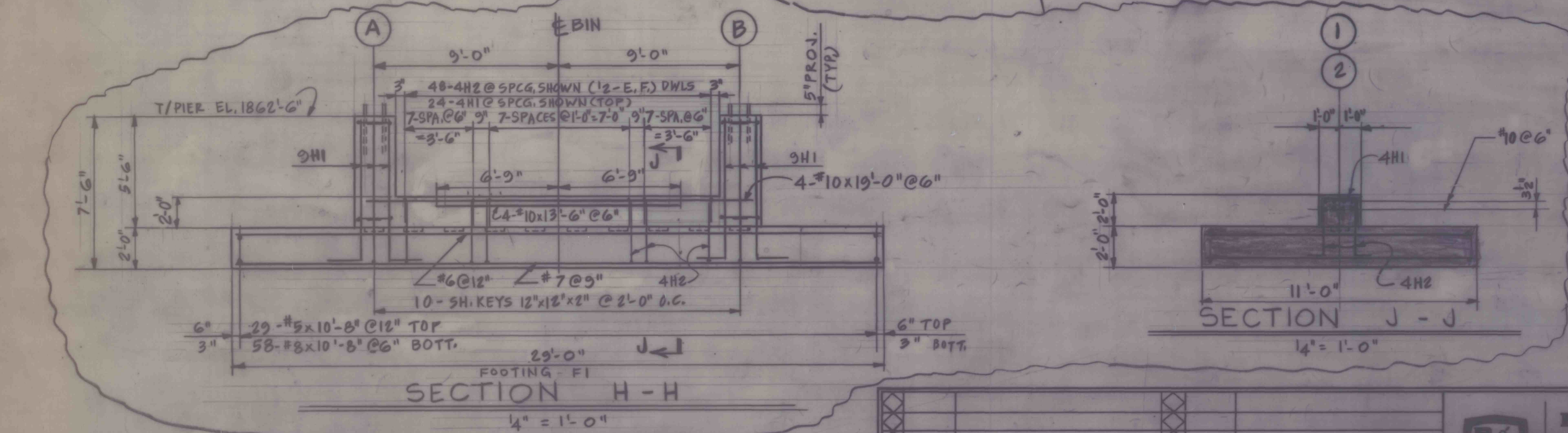
**SECTION C-C**



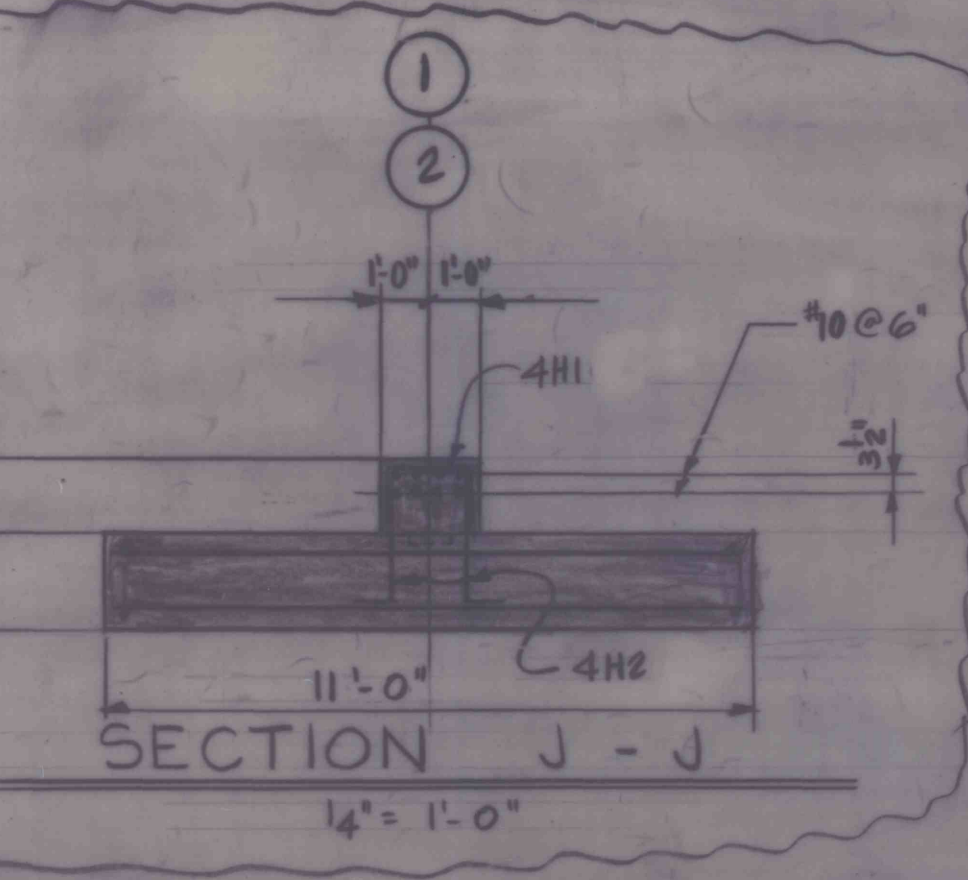
**SECTION D-D**



**SECTION E-E**



**SECTION H-H**  
1/4" = 1'-0"



**SECTION J-J**  
1/4" = 1'-0"

- NOTES:**
- FOR CONCRETE NOTES & ANCHOR BOLT SCHEDULE SEE DWG. 01-C1
  - FOR REBAR SCHEDULE SEE SHEET NO. 42 & 65
  - FOOTINGS HAVE BEEN DESIGNED FOR A SOIL PRESSURE OF 3000 PSF FOR BIN & 3000 PSF FOR CONVEYOR, AT ELEVATIONS SHOWN.
  - FOR LAYOUT SEE DWG. 51-LZ

**QUANTITIES:**

	BIN	CONV.
CONCRETE:	94 C.Y.	13.2 C.Y.
REINFORCING:	16,093 LBS	1650 LBS

REV.	DATE	DESCRIPTION OF REVISION	REV.	DATE	DESCRIPTION OF REVISION

**ROBERTS & SCHAFFER**  
ENGINEERS AND CONTRACTORS  
CHICAGO - SALT LAKE CITY

36"W. REFUSE BELT & BIN  
FOUNDATION PLAN & DETAILS  
HIGH POWER MOUNTAIN STEAM COAL PROJ.  
BETHLEHEM MINES CORP DRENNEN W.V.

MADE BY D.B./S.A.B.  
CHECKED BY W.W.F. DIRECTED BY H.A.  
APPROVED BY

SCALE: 3/8" = 1'-0" D.N. DATE: 4-1-85  
8455-51-C1