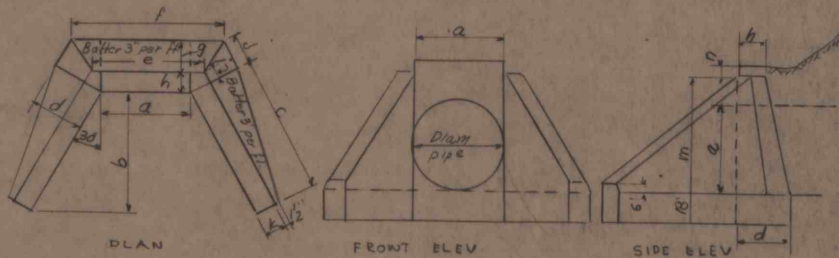


# DRAINAGE CULVERT HEADWALLS



DIA OF PIPE	a	b	c	d	e	f	g	h	i	j	k	m	n
48"	48"	5'-6"	5'-9 1/4"	23 1/2"	4'-5 1/2"	5'-9"	13 1/2"	10"	5 3/8"	13 1/2"	10"	4'-6"	3 1/2"
72"	72"	6'-6"	7'-6"	30"	7'-13 3/4"	8'-10 1/2"	18"	12"	7"	17 3/8"	12"	7'-0"	6"

Concrete 2500<sup>#</sup>/cu' M28 DAYS

MAX. SIZE AGGREGATE 2"

ALL CORNERS BEVELED 1"-45°

REQ'D 2-48"  
2-72"

3213-SK264