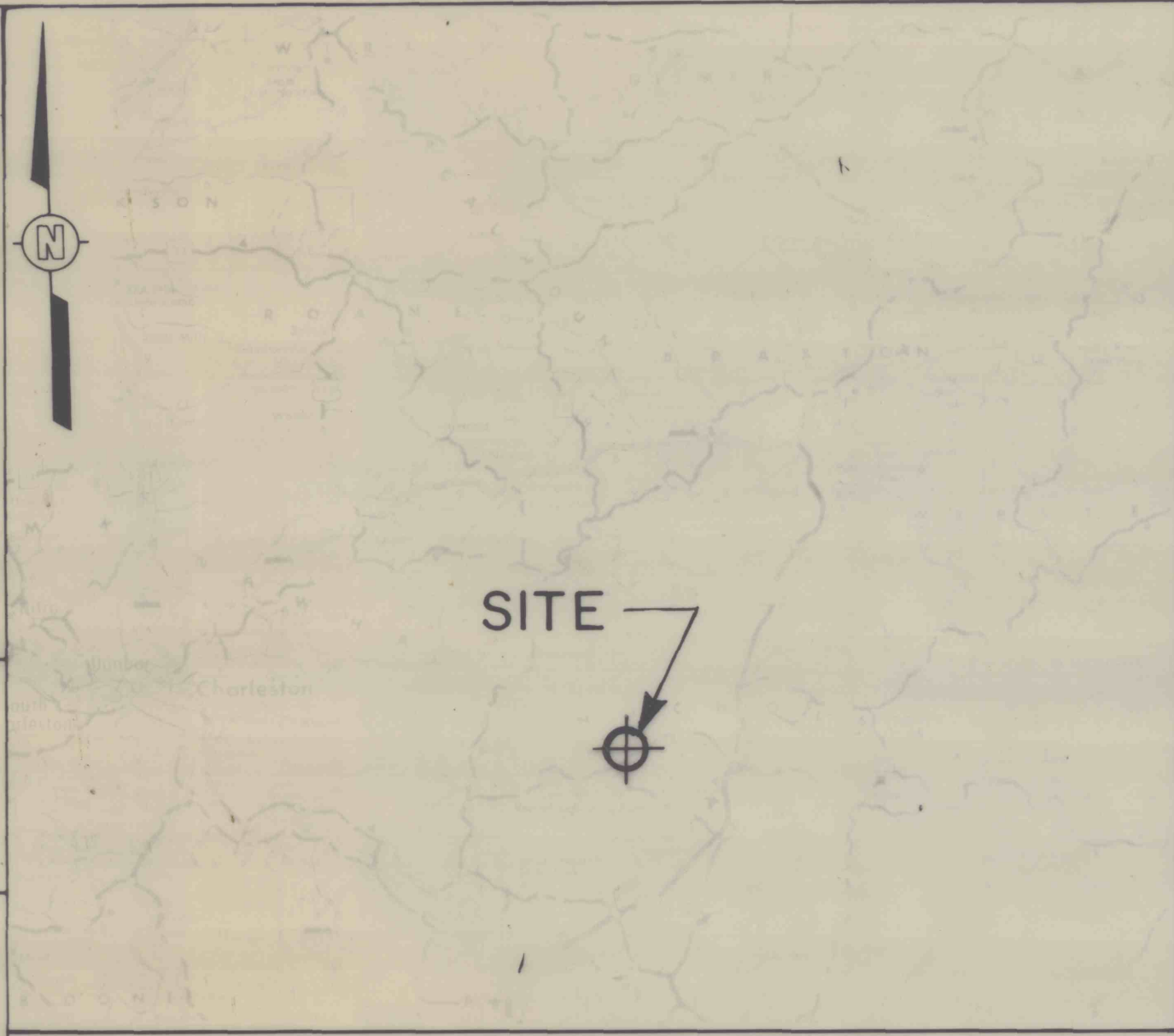


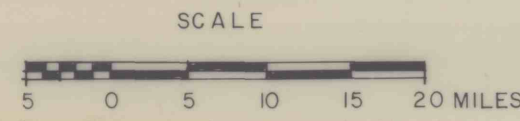
DRAWING NUMBER
B77-801-T1

CHECKED BY
Trs
3-9-81

DRAWN BY



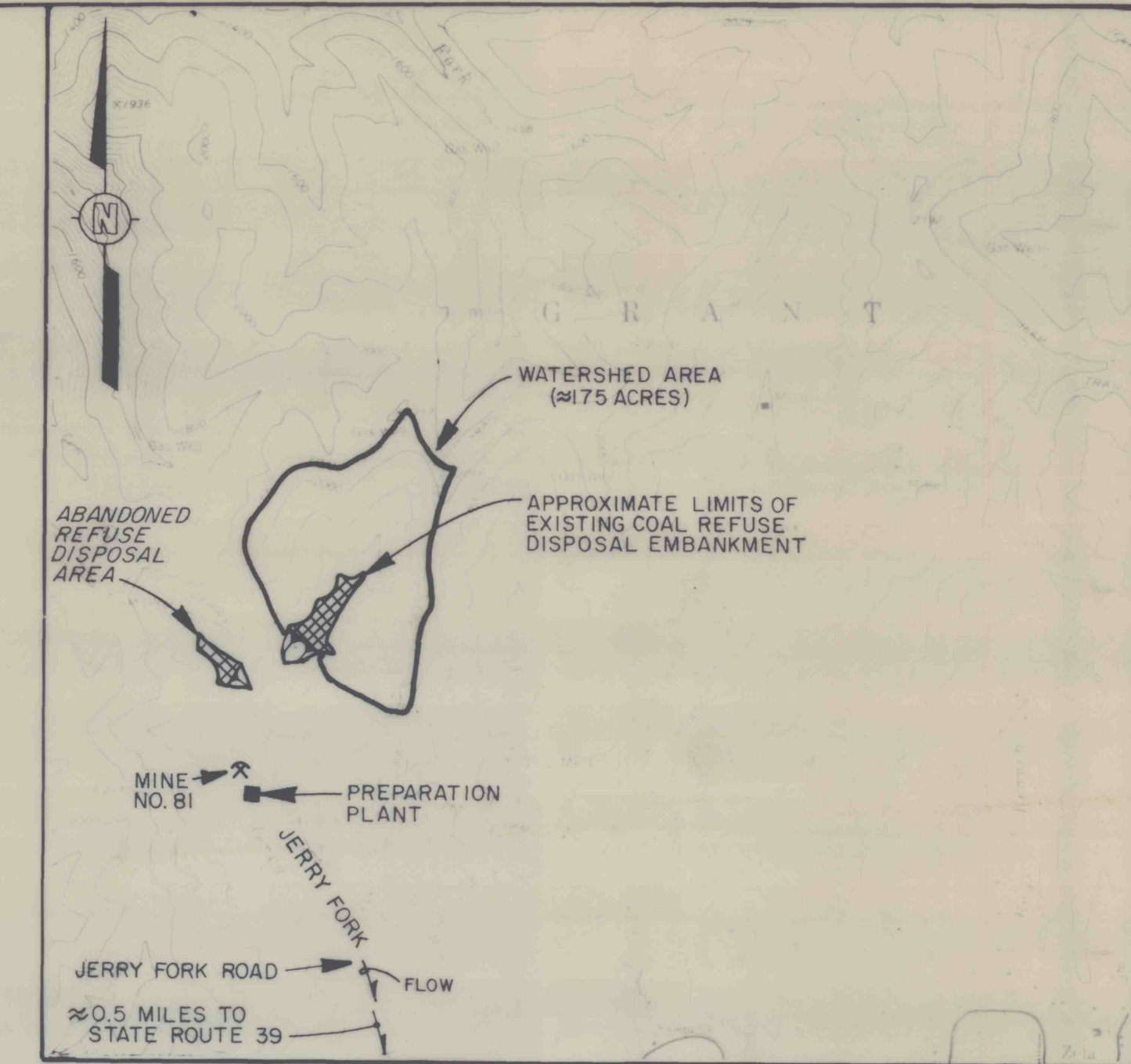
REFERENCE
OFFICIAL WEST VIRGINIA HIGHWAY MAP
ISSUED BY WEST VIRGINIA DEPARTMENT
OF HIGHWAYS, DATED 1978



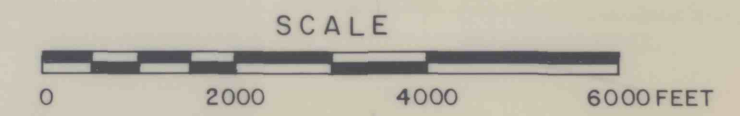
LOCATION MAP

INDEX OF DRAWINGS

SHEET NO.	DRAWING NO.	TITLE
1 OF 12	B77-801-T1	TITLE SHEET
2 OF 12	B77-801-E6	EXISTING CONDITIONS
3 OF 12	B77-801-E10	STAGE I
4 OF 12	B77-801-E11	STAGE II
5 OF 12	B77-801-E16	STAGE III
6 OF 12	B77-801-E12	STAGE IV
7 OF 12	B77-801-E8	DETAILS, SHEET 1 OF 2
8 OF 12	B77-801-E9	DETAILS, SHEET 2 OF 2
9 OF 12	B77-801-E15	PIEZOMETER READINGS: YEARS 1980-1989
10 OF 12	B77-801-E13	LABORATORY TEST DATA
11 OF 12	B77-801-E14	BORING LOGS B-1 AND B-2, TEST PIT LOGS DPT-1 THROUGH DPT-4 AND GENERAL NOTES AND LEGEND
12 OF 12	B77-801-E17	CONSTRUCTION SCHEDULE AND ESTIMATED CONSTRUCTION QUANTITIES



REFERENCE:
7.5 MINUTE SERIES U.S.G.S. TOPOGRAPHIC MAP
GILBOA QUADRANGLE, NICHOLAS COUNTY WEST
VIRGINIA, 1967, SCALE 1"=2000'



VICINITY MAP

PROPOSED MODIFICATIONS AND FUTURE DISPOSAL PLAN

COAL REFUSE DISPOSAL FACILITY
MINE NO. 81

BETHLEHEM MINES CORPORATION
DRENNEN, WEST VIRGINIA

PREPARED FOR

BETHLEHEM MINES CORPORATION
NICHOLAS DIVISION
CHARLESTON, WEST VIRGINIA

Richard G. Almes
RICHARD G. ALMES
WEST VIRGINIA REGISTRATION NO. 6424

DRAWING NO. B77-801-T1	SHEET NO. 1 OF 12	FIGURE NO.
TITLE SHEET COAL REFUSE DISPOSAL FACILITY MINE NO. 81 BETHLEHEM MINES CORPORATION DRENNEN, WEST VIRGINIA PREPARED FOR BETHLEHEM MINES CORPORATION NICHOLAS DIVISION CHARLESTON, WEST VIRGINIA D'APPOLONIA		