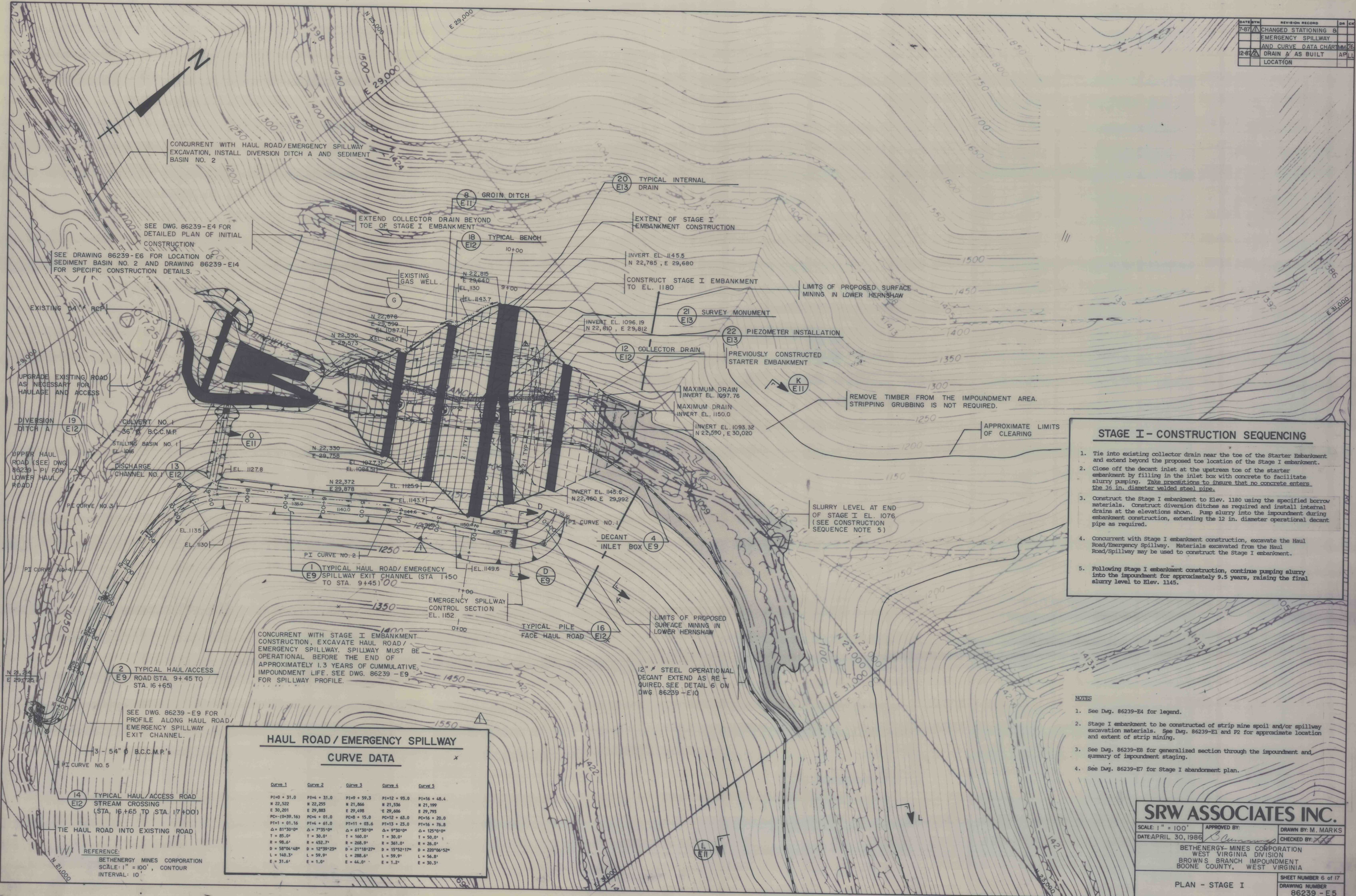


DATE	BY	REVISION RECORD	DR	CR
7-87		CHANGED STATIONING	B	
		EMERGENCY SPILLWAY		
		AND CURVE DATA CHART		
12-87		DRAIN AS BUILT	APL	
		LOCATION		



- ### STAGE I - CONSTRUCTION SEQUENCING
1. Tie into existing collector drain near the toe of the Starter Embankment and extend beyond the proposed toe location of the Stage I embankment.
 2. Close off the decant inlet at the upstream toe of the starter embankment by filling in the inlet box with concrete to facilitate slurry pumping. Take precautions to insure that no concrete enters the 36 in. diameter welded steel pipe.
 3. Construct the Stage I embankment to Elev. 1180 using the specified borrow materials. Construct diversion ditches as required and install internal drains at the elevations shown. Pump slurry into the impoundment during embankment construction, extending the 12 in. diameter operational decant pipe as required.
 4. Concurrent with Stage I embankment construction, excavate the Haul Road/Emergency Spillway. Materials excavated from the Haul Road/Spillway may be used to construct the Stage I embankment.
 5. Following Stage I embankment construction, continue pumping slurry into the impoundment for approximately 9.5 years, raising the final slurry level to Elev. 1145.

HAUL ROAD / EMERGENCY SPILLWAY CURVE DATA

Curve 1	Curve 2	Curve 3	Curve 4	Curve 5
PI=0 + 31.0	PI=4 + 31.0	PI=9 + 59.3	PI=12 + 93.0	PI=16 + 48.4
N 22,522	N 22,293	N 21,866	N 21,536	N 21,199
E 30,201	E 29,883	E 29,498	E 29,066	E 28,793
PC= (0+39.16)	PC=4 + 01.0	PC=8 + 15.0	PC=12 + 03.0	PC=16 + 28.0
PT=1 + 01.16	PT=4 + 01.0	PT=11 + 03.6	PT=13 + 23.0	PT=16 + 76.8
Δ = 81°30'00"	Δ = 7°35'00"	Δ = 61°30'00"	Δ = 9°30'00"	Δ = 125°0'00"
T = 85.0'	T = 30.0'	T = 160.0'	T = 30.0'	T = 50.0'
R = 98.6'	R = 452.7'	R = 268.9'	R = 361.0'	R = 26.0'
D = 58°04'48"	D = 12°39'23"	D = 21°18'27"	D = 15°52'17"	D = 220°06'52"
L = 140.3'	L = 59.9'	L = 288.6'	L = 59.9'	L = 56.8'
E = 31.6'	E = 1.0'	E = 44.0'	E = 1.2'	E = 30.3'

- ### NOTES
1. See Dwg. 86239-E4 for legend.
 2. Stage I embankment to be constructed of strip mine spoil and/or spillway excavation materials. See Dwg. 86239-E1 and E2 for approximate location and extent of strip mining.
 3. See Dwg. 86239-E8 for generalized section through the impoundment and summary of impoundment staging.
 4. See Dwg. 86239-E7 for Stage I abandonment plan.

SRW ASSOCIATES INC.

SCALE: 1" = 100'

DATE: APRIL 30, 1988

APPROVED BY: *[Signature]*

CHECKED BY: *[Signature]*

DRAWN BY: M. MARKS

BETHERNEY MINES CORPORATION
WEST VIRGINIA DIVISION
BROWN'S BRANCH IMPOUNDMENT
BOONE COUNTY, WEST VIRGINIA

PLAN - STAGE I

SHEET NUMBER 6 of 17
DRAWING NUMBER 86239 - E 5