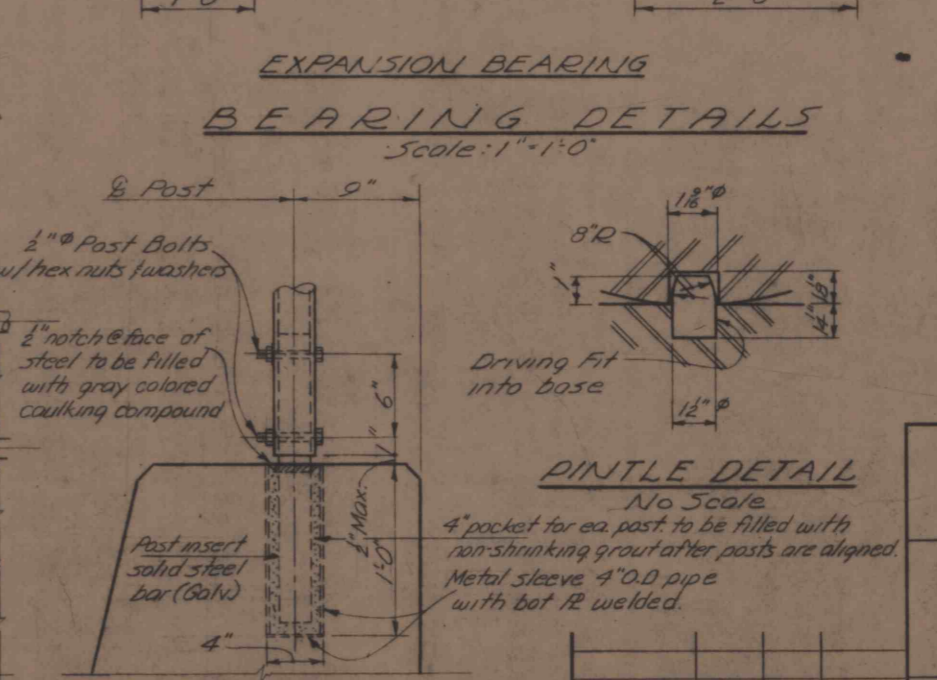
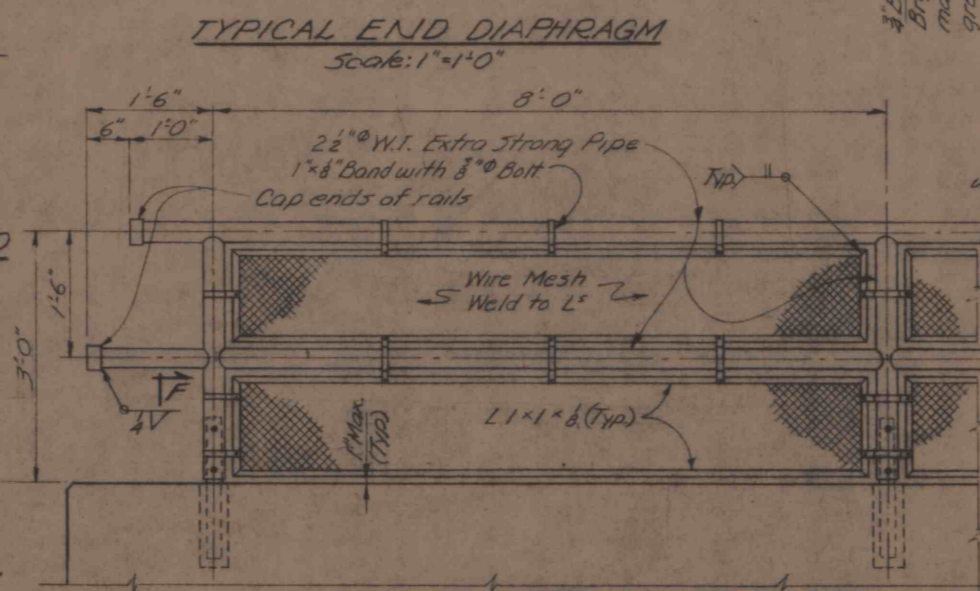
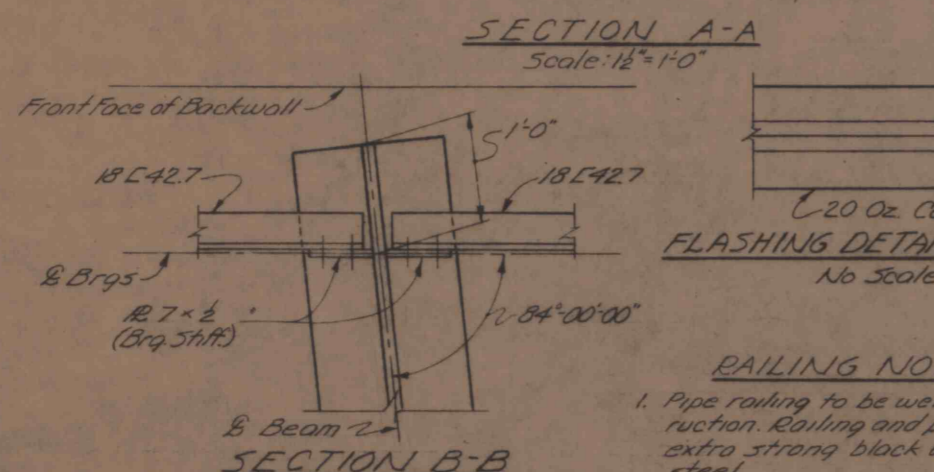
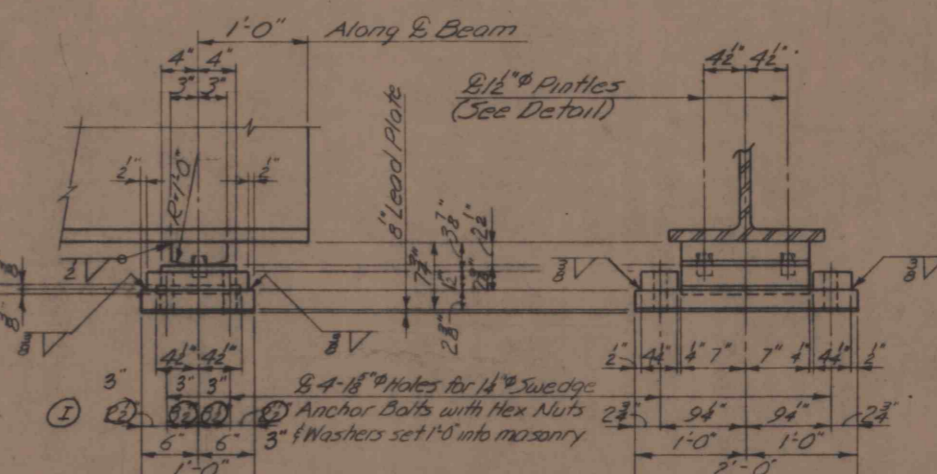
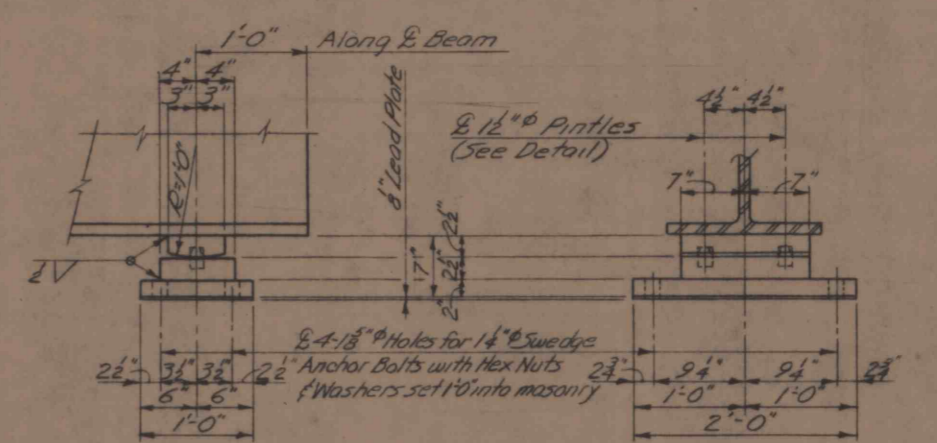
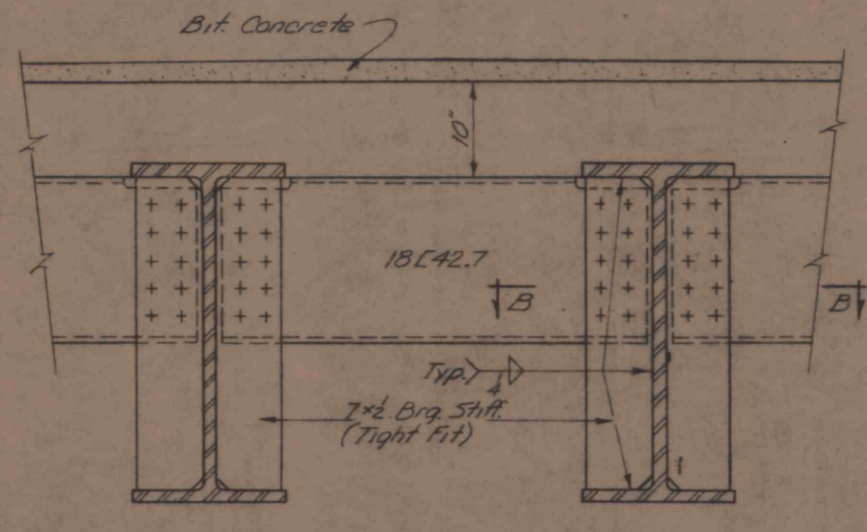
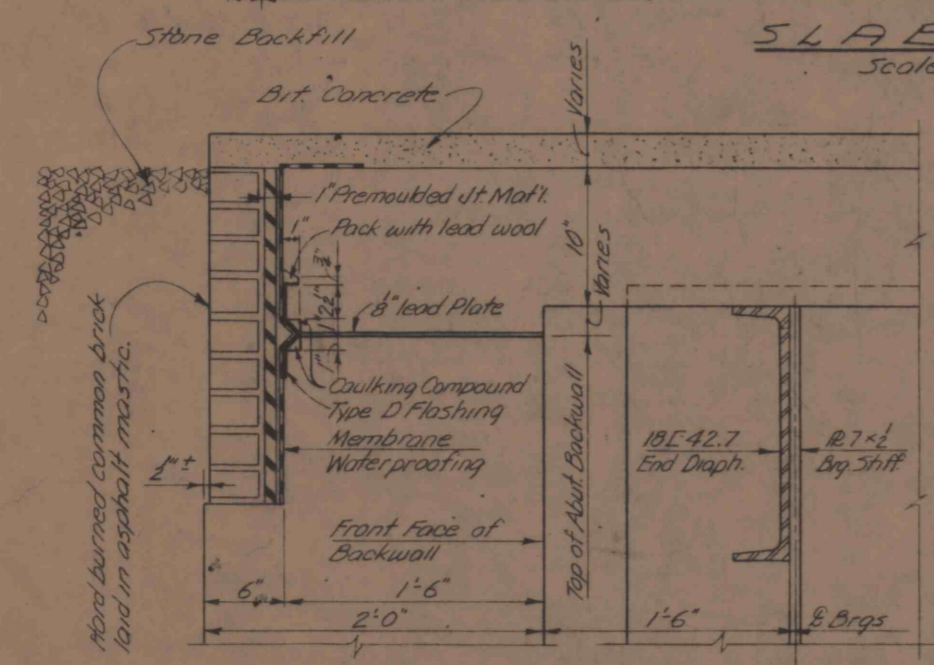


SLAB BAR SCHEDULE				
Mark	Size	No.	Length	Bending
S1	#4	66	26'-3"	Straight
S2	#5	62	19'-2"	Sketch A
S3	#5	62	18'-0"	Straight
S4	#4	124	7'-6"	Sketch B
S5	#5	26	6'-0"	Straight

Bending Diagrams  
All dimensions are out to out.



- ### STRUCTURAL STEEL NOTES
- Design - Cooper E-72 loading. Diesel impact plus rolling.
  - Specifications: See note #2 of the General Notes. Welding shall comply with the provisions of the current specifications for Welded Highway and Railroad Bridges of the American Welding Society. Mild steel arc welding electrodes of low hydrogen type shall be used for all welding. These electrodes shall comply with current A.S.T.M. requirements for the particular steel welded.
  - Rivets: 8" designation A141, 5/8" high strength bolts may be used in place of rivets.
  - All structural steel shall conform to A.S.T.M. designation A36.
  - Bearing shoes, including bronze plates with inserts, anchor bolts, 8" W.I. perforated pipe and 8" lead plates to be paid for as fabricated structural steel.
  - Self lubricating bronze bearing plates shall conform to the current A.B.E.A. Manual of Recommended Practice chapter 15-1-33-2.

- ### DECK SLAB NOTES
- For General Notes see Sheet #1.
  - All concrete in the superstructure shall be Class A.
  - The furnishing and placing of all waterproofing materials including, premoulded joint material, membrane waterproofing, flashing, caulking compound, lead wool and brick protection courses, as shown on Section A-A of this sheet shall be included in the price paid for Class A Concrete.
  - For placement of reinforcement bars see Typical Section Sheet #1.
  - Concrete in curbs above construction joint shall not be placed for at least 7 days after placing slab.

DESIGN LWH  
DRAW ENO  
TRACE ETG  
ESTIMATE  
ENGINEER IN CHARGE

- ### RAILING NOTES
- Pipe railing to be welded construction. Railing and posts to be extra strong black wrought steel.
  - Mesh to be 3/4" x 3/4" with #12 gage steel wires. Mesh, band and etc. to be hot dipped galvanized.
  - The cost of the wire mesh, bands, bolts, sleeves and inserts shall be included in price paid for pipe railing.

BETHLEHEM MINES CORPORATION  
CAMBRIA DIVISION  
RAILROAD EXTENSION TO CAMBRIA PLANT SITE  
CAMBRIA COUNTY, PA.  
RAILROAD BRIDGE OVER L.R. 53  
SUPERSTRUCTURE

GANNETT FLEMING CORDDRY & CARPENTER, INC.  
ENGINEERS  
HARRISBURG, PA.

SCALE AS NOTED  
DATE 4/5/62  
SHEET 2 OF 5