

DRAWING NUMBER 78-359-E17

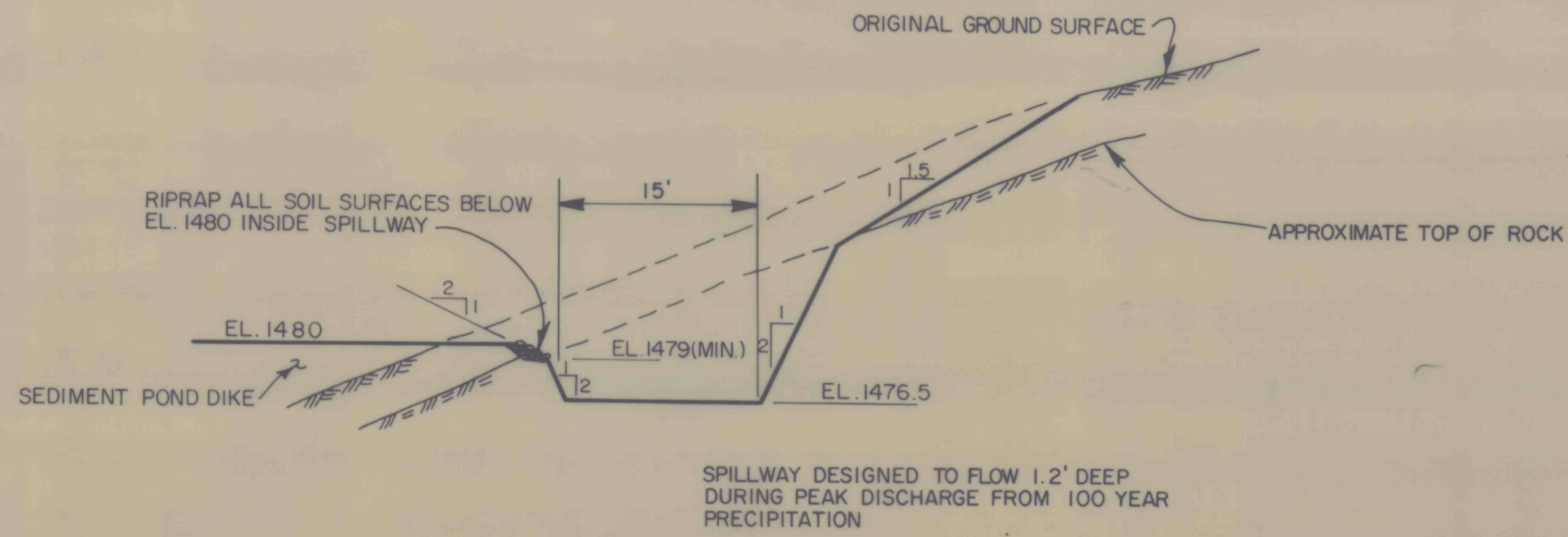
7-9-79
5 July 79

APPROVED BY R.E.A.

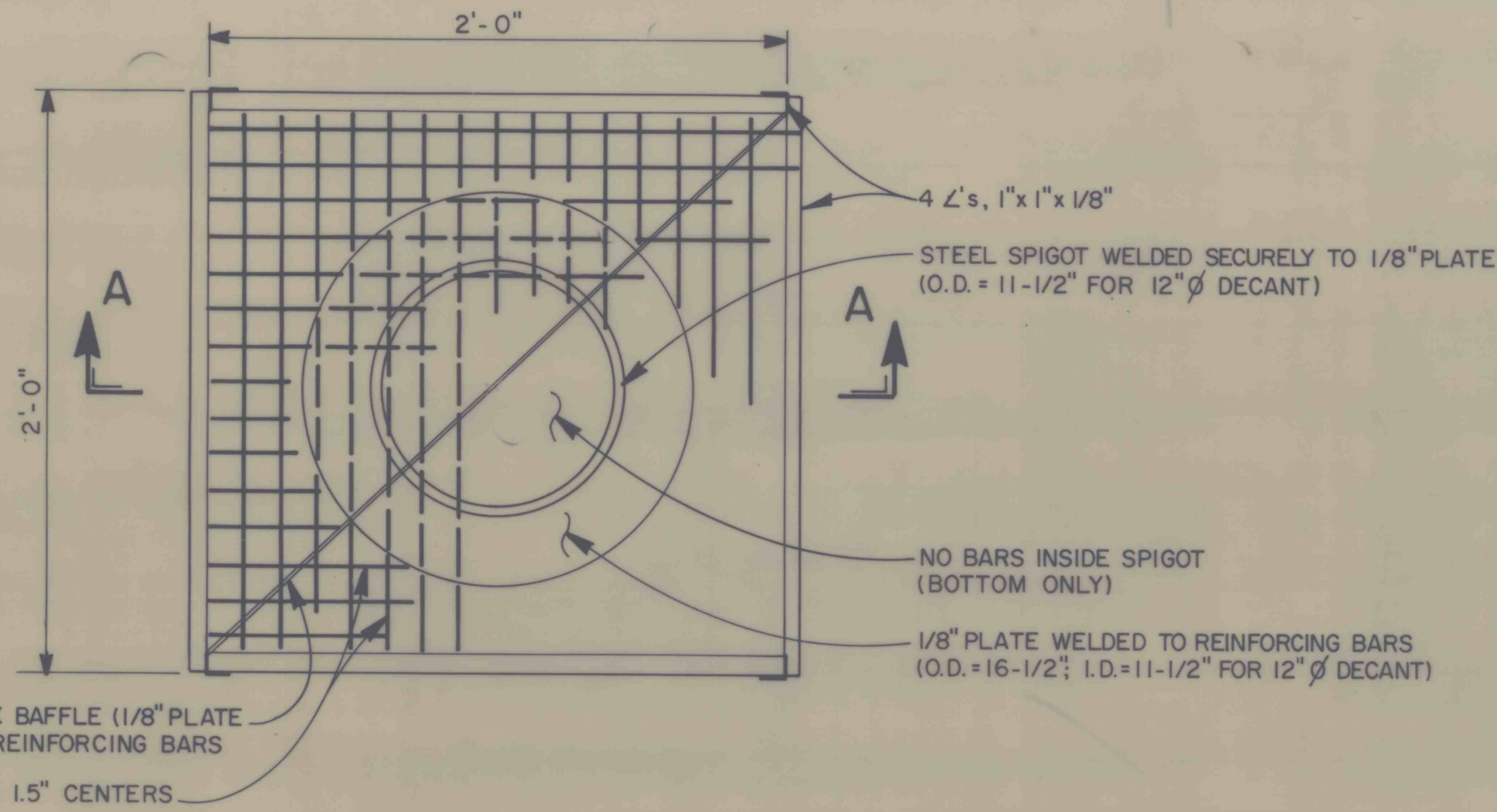
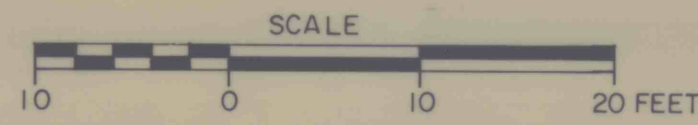
APPROVED BY R.E.A.
CHECKED BY J.L.L.

JUL 5-30-79

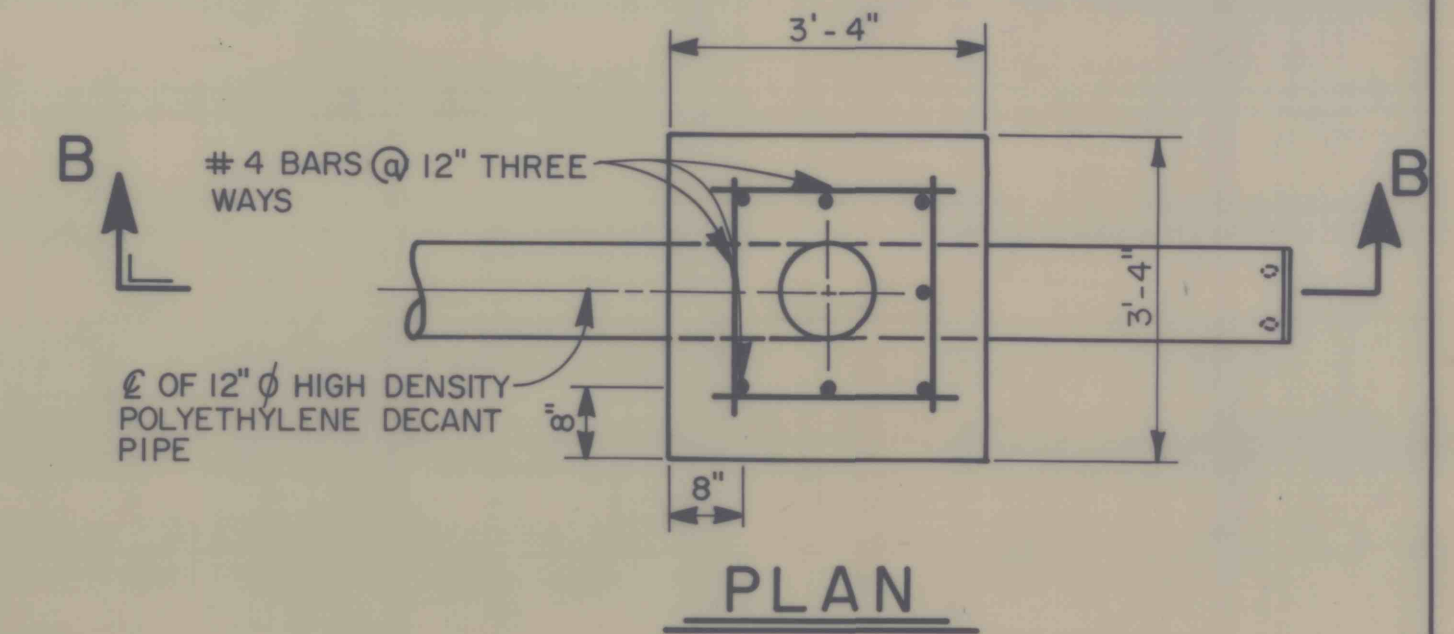
DRAWN BY



SEDIMENT POND SPILLWAY SECTION

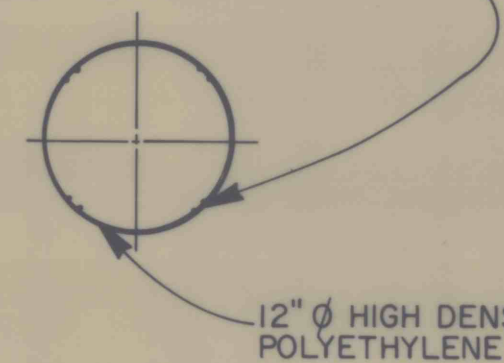


BOTTOM VIEW

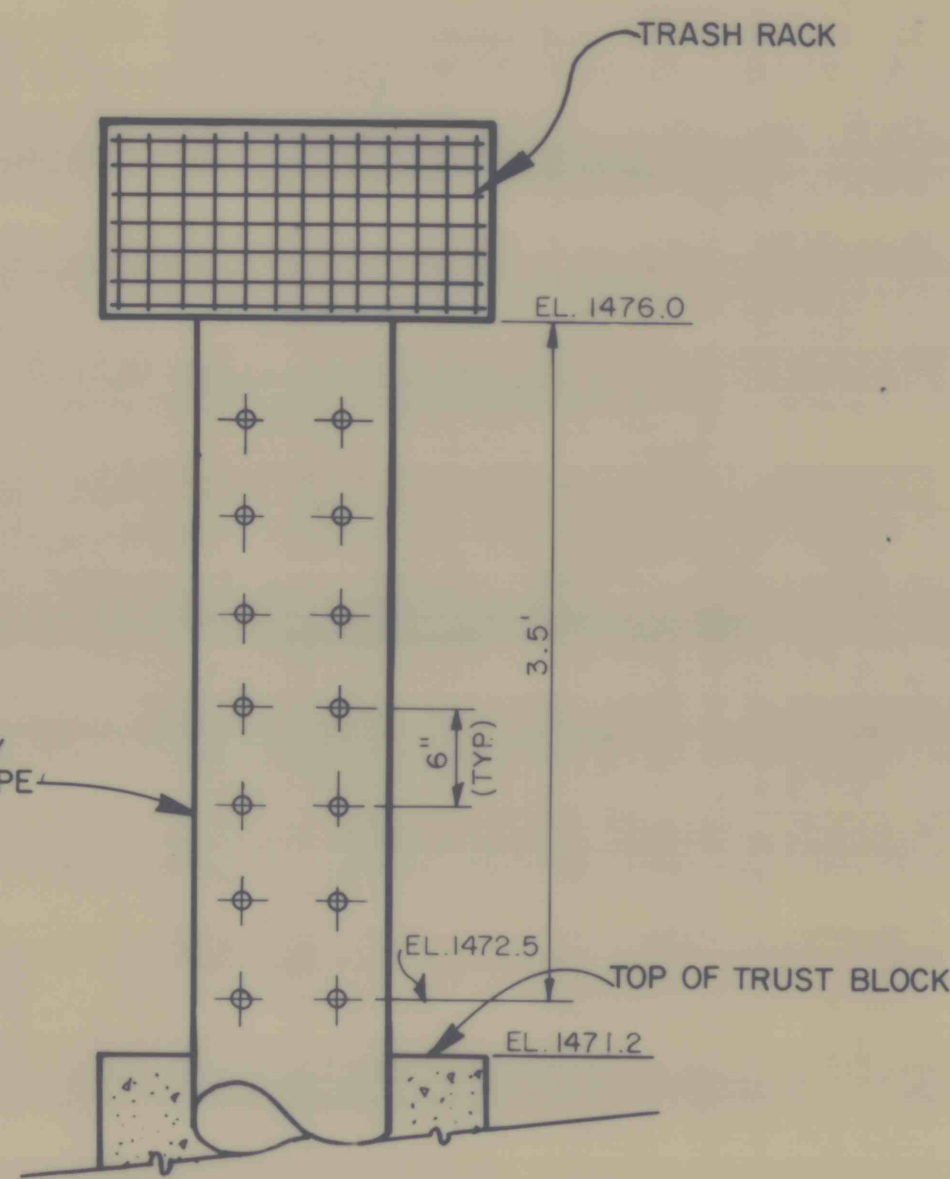


PLAN

1" DIA. HOLES, 4 @ 1/4 PTS ON CIRCUMFERENCE @ 6" O.C. VERTICALLY BETWEEN EL. 1476 AND 1472.5 (TOP 3.5' OF PIPE)

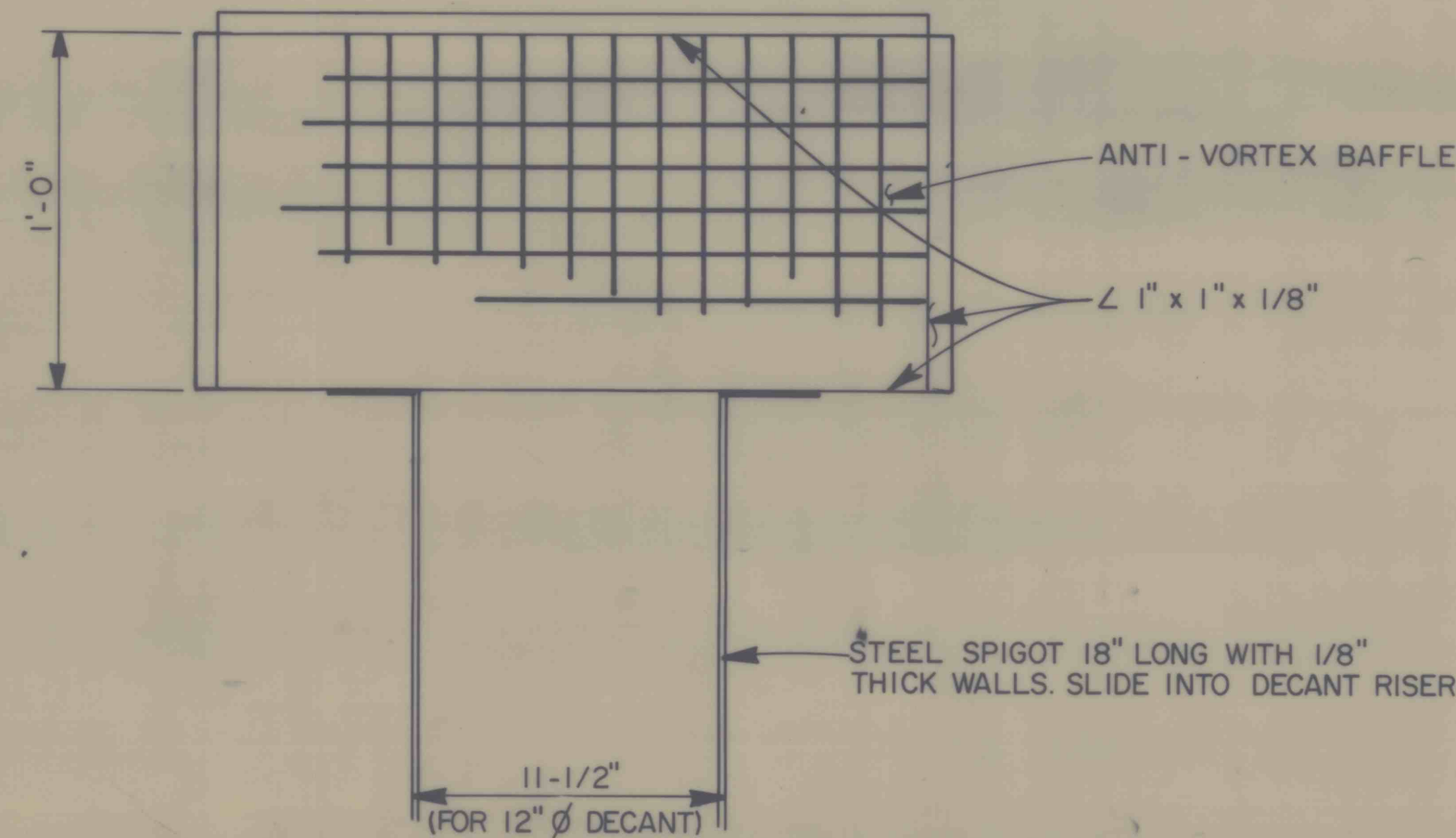
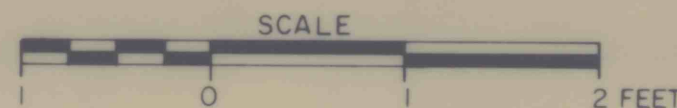


PLAN

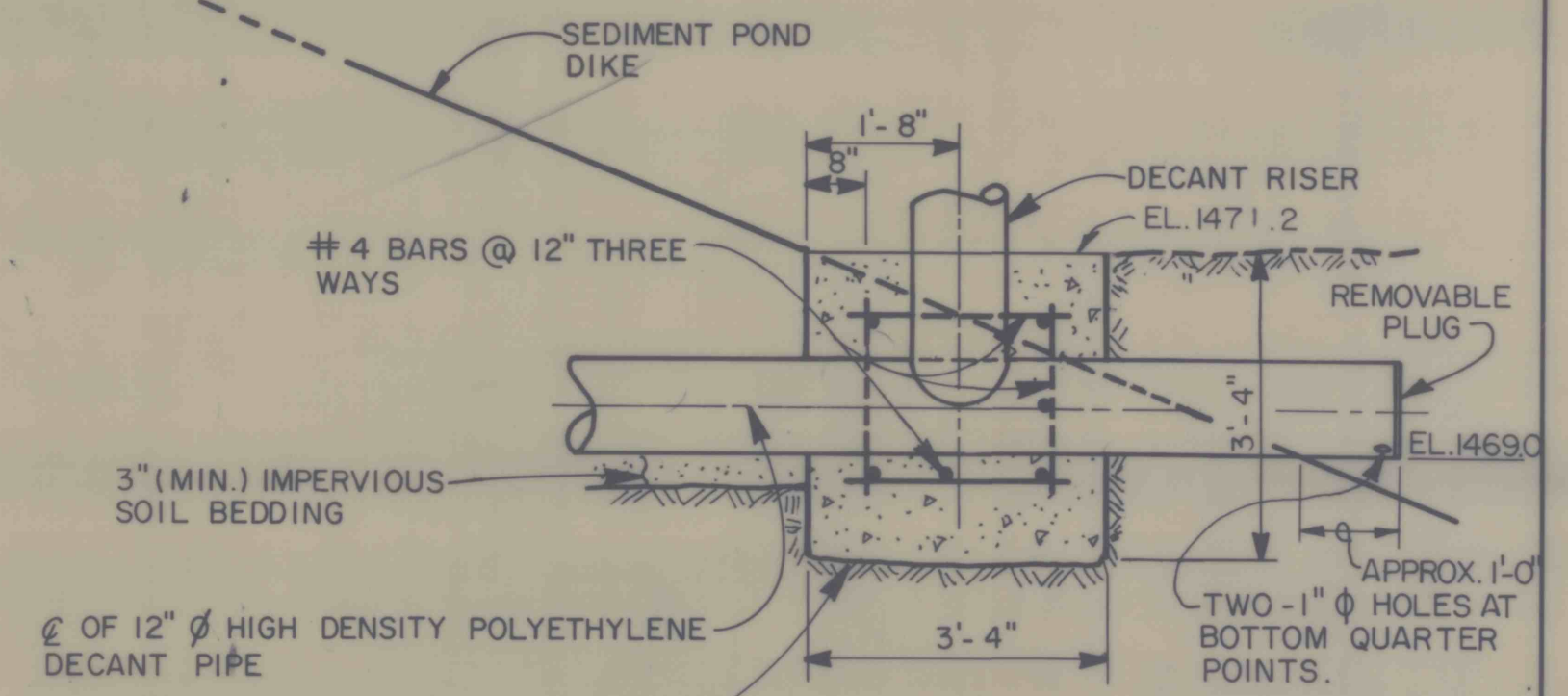
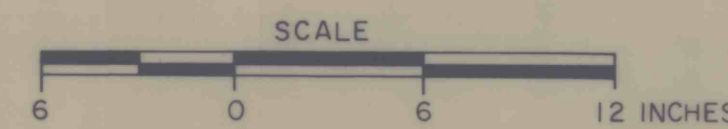


ELEVATION

SEDIMENT POND - DECANT PIPE RISER

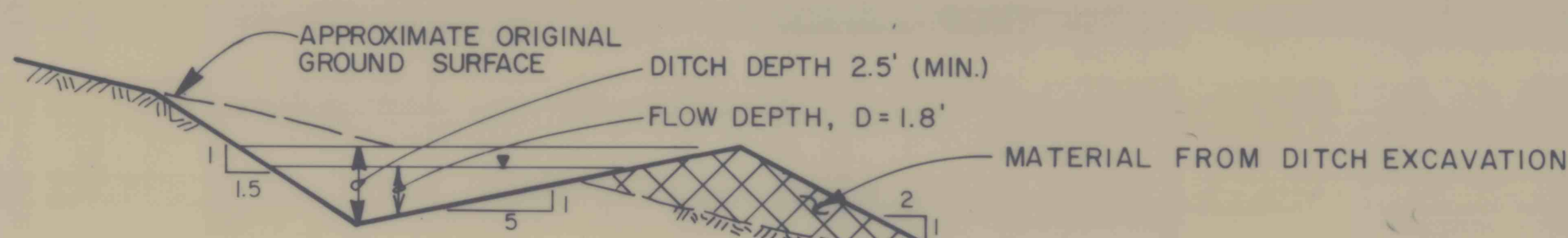
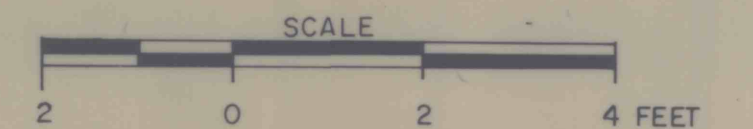


**SECTION A-A
DETAIL - RISER TRASH RACK**

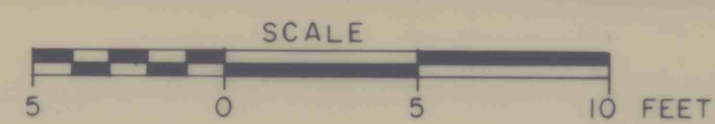


SECTION B-B

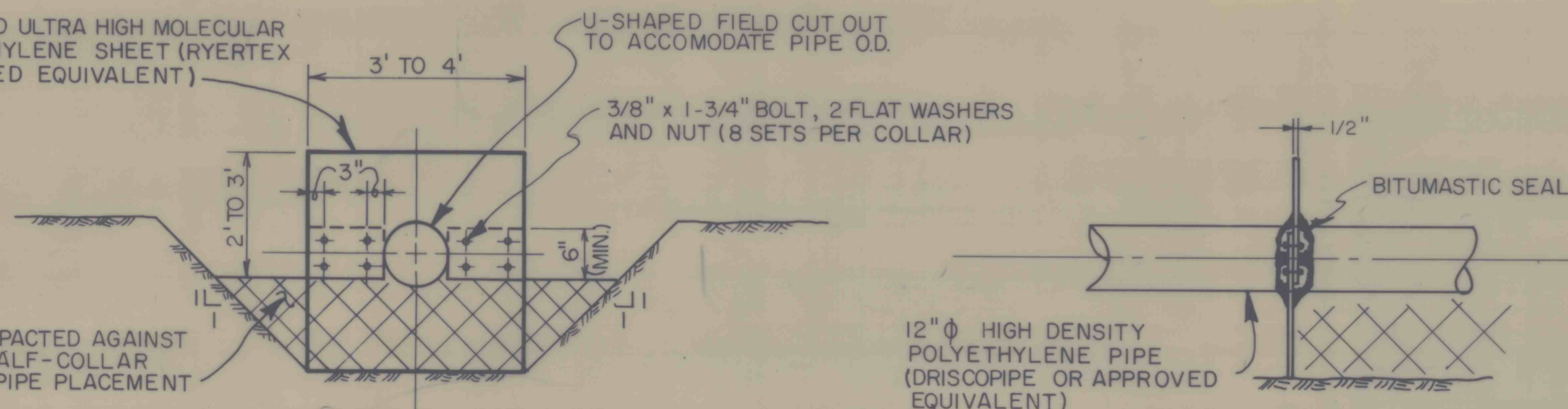
DETAIL - DECANT THRUST BLOCK



TEMPORARY DIVERSION DITCH



FIELD FABRICATED ULTRA HIGH MOLECULAR WEIGHT POLYETHYLENE SHEET (RYERTEX 819 OR APPROVED EQUIVALENT)



NOTE: APPROVED ALTERNATE COLLARS OF POLYETHYLENE OR CONCRETE MAY BE SUBSTITUTED, METAL COLLARS ARE NOT ACCEPTABLE FOR THIS WORK.

ANTI-SEEP COLLAR DETAILS

N.T.S.

DRAWING NO. 78-359-E17 SHEET NO. FIGURE NO. 19

DETAILS SHEET 2 of 2

BETHLEHEM MINE No. 101
CENTURY, WEST VIRGINIA

PREPARED FOR

BETHLEHEM MINES CORPORATION
BRIDGEPORT, WEST VIRGINIA

D'APPOLONIA