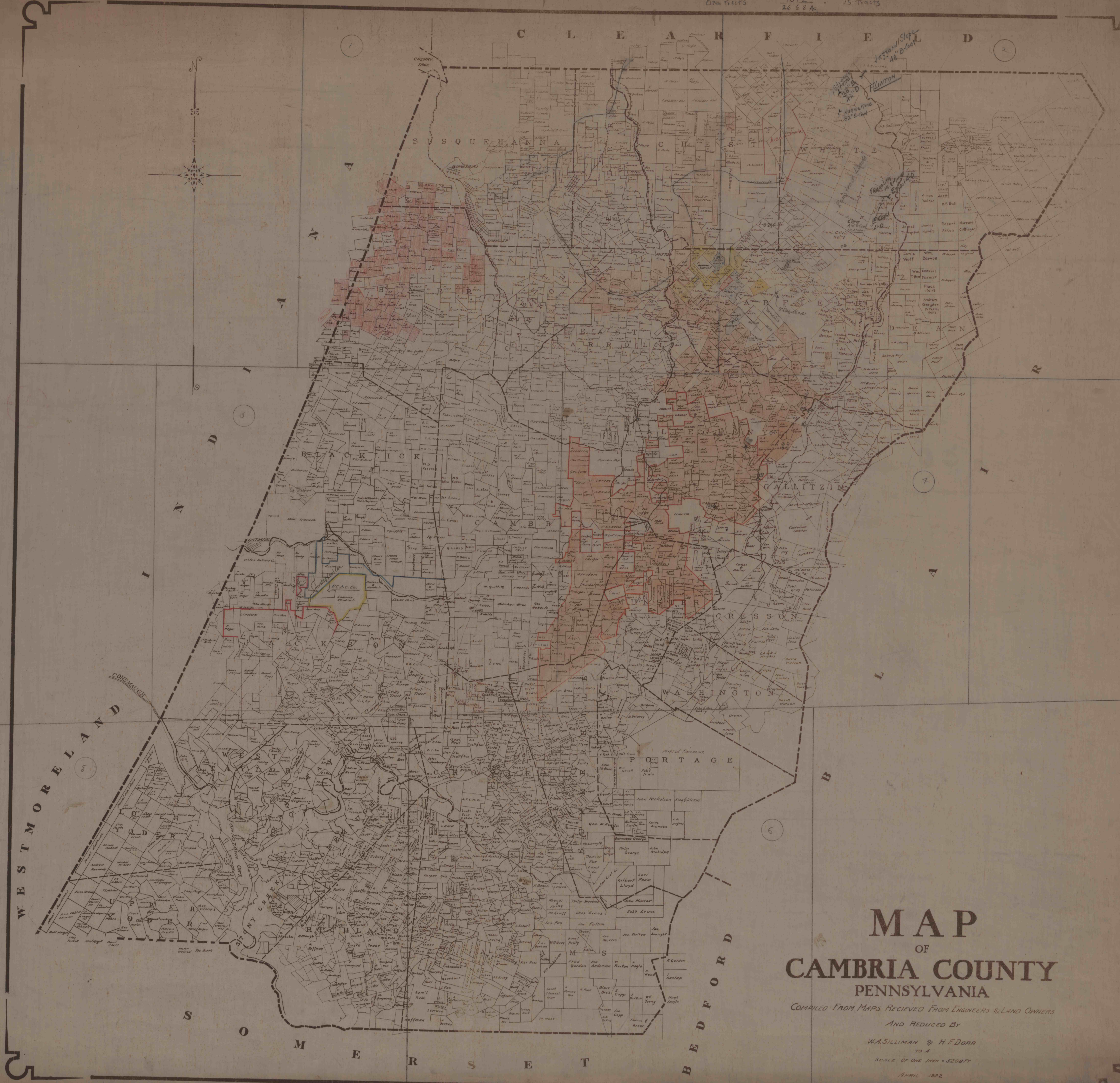


Ansden & Pirsch	6,154 Ac. Coal	5 Tracts
P.J. Little	10,414 Ac. Coal	16 Tracts
C.B. Curran	10,172	13 Tracts
Open Tracts	26,684 Ac.	

142,000 Slope
As B Coal



MAP OF CAMBRIA COUNTY PENNSYLVANIA

COMPILED FROM MAPS RECEIVED FROM ENGINEERS & LAND OWNERS

AND REDUCED BY

W. S. LILIMAN & H. F. DORR

TO A

SCALE OF ONE INCH = 32,000 FT.

APRIL 1922