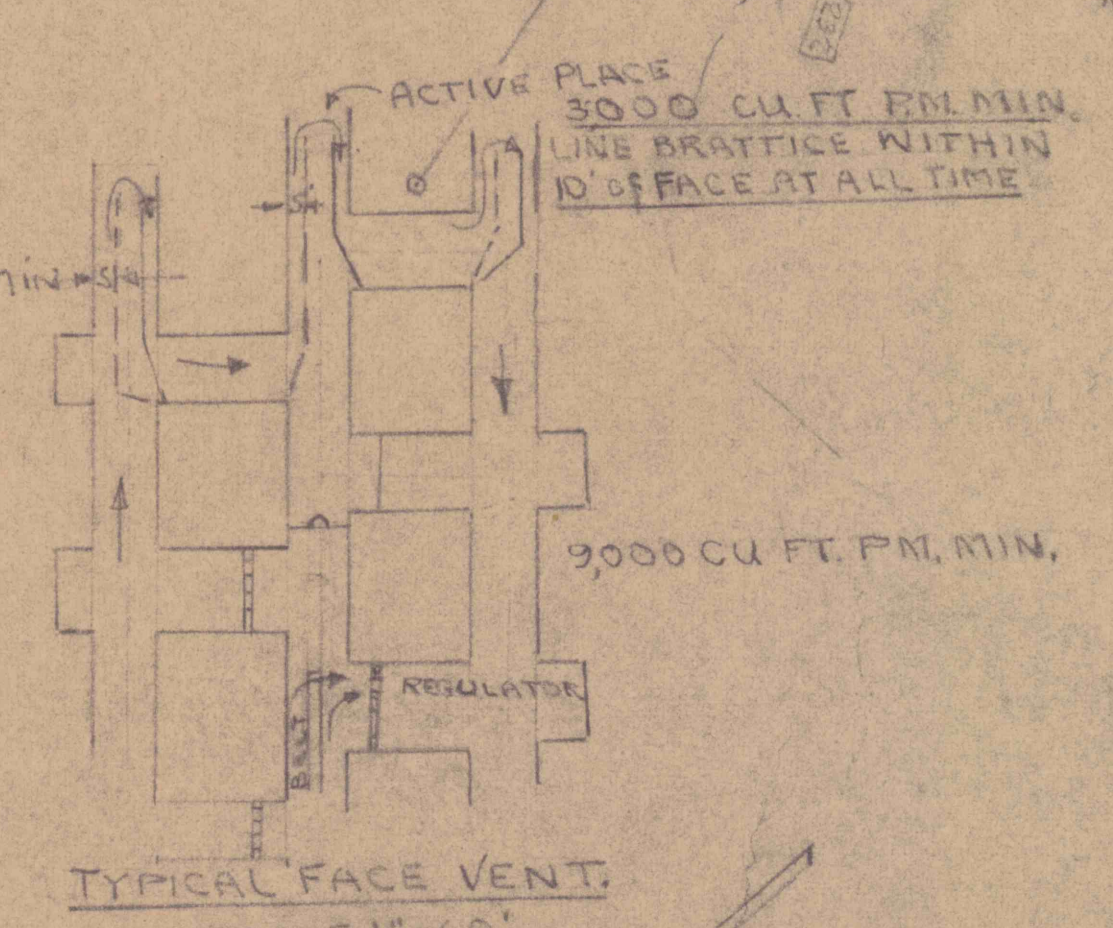


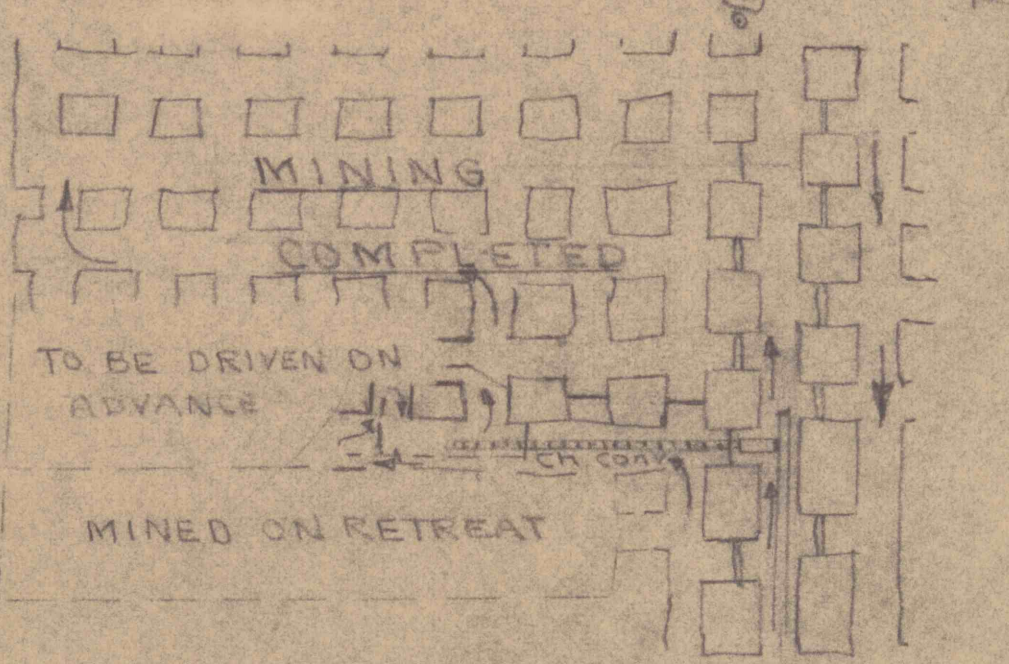
LINE BRATTICE IS USED TO PROVIDE VENTILATION TO THE WORKING FACE. EXHAUST OR BLOWING SYSTEM USED TO WITHIN 10' OF FACE

LEGEND OF VENTILATION SYMBOLS
 GREEN → INTAKE AIR
 ORANGE → RETURN AIR
 I - PERM. STOPPINGS
 D - PERM. DOORS
 D - TEMP. DOORS
 X - OVERCAST
 XX - CAVED AREA
 R - REGULATOR
 S - SEAL
 Y - YELLOW-ESCAPEWAYS
 CONCRETE BLOCKS ARE USED IN PERMANENT STOPPING & OVERCAST

LEGEND
 PROJECTED MINING AREA FROM
 OUTLINED IN BROWN
 BLDG PROTECTION AREA OUTLINED IN RED



FACE EQUIPMENT
 1-JEFFREY 100-L CONT. MINER
 2-94D BRIDGE CONVEYORS
 1-300' DOUBLE BRIDGE CARRIER
 1-GALIS 300' ROOF BOLTER WITH DUST COLLECTOR



PERMIT No. 253 PROJECTION No. VALLEY COAL CO. No. 12 MINE LOWER FREEPORT SEAM PINE TWP INDIANA, CO. NOV. 1968 SCALE 1"=100' Martin C. Kirach PE Spangler, Penna.

NOTE: I hereby certify that the mine work as shown on this map as of Oct. 31, 1972, is true and correct to best of my knowledge and belief.