

Ccm

Conemaugh formation
(gray shale, sandstone, and clay, including some red shale and thin beds of limestone and coal)

uk uf

Ca lk

Allegheny formation
(chiefly gray and dark shale with local beds of clay and sandstone and several workable beds of coal; Upper Freeport coal at top; Johnstown limestone member directly underlies the Upper Kittanning coal)

Cpv

Pottsville formation
(heavy-bedded gray sandstone with interbedded shale, clay, and thin beds of coal)

UNCONFORMITY

Cmc

Mauch Chunk shale
(red and green shale with subordinate sandstone and thin lenses of limestone)

Clh

Loyalhanna limestone
(siliceous limestone)

Cpo

Pocono formation
(gray sandstone and sandy shale)

Dck

Catskill formation
(red sandstone and shale)

Dch

Chemung formation
(greenish-gray sandstone and shale)

ECONOMIC AND
STRUCTURE DATA

Coal outcrops

uf Upper Freeport coal
uk Upper Kittanning coal and underlying
lk Johnstown limestone member
lk Lower Kittanning coal

Structure contours drawn on
horizon of Lower Kittanning coal
(contour interval, 50 feet;
datum, mean sea level)

- Coal mine shaft
- ⊗ Coal mine
(unless otherwise specified)
- × Country coal bank
- ss Sandstone quarry
- ⊗ Clay or shale pit
- ⊗ Strike and dip of stratified rocks
- ⊕ Dry hole, show of gas

LIST OF COAL MINES

Location indicated on the map by numbers

1. Eureka No. 42
2. Murphy Hill
3. Lochrie No. 1
4. Heckler-Faust
5. Allison
6. Eureka No. 41
7. Eureka No. 36-B
8. Eureka No. 36-C
9. Egolf No. 3
10. Eureka No. 33
11. Eureka No. 34
12. Eureka No. 32
13. Eureka No. 35-B
14. Eureka No. 35-C
15. Eureka No. 31
16. Windber Fuel

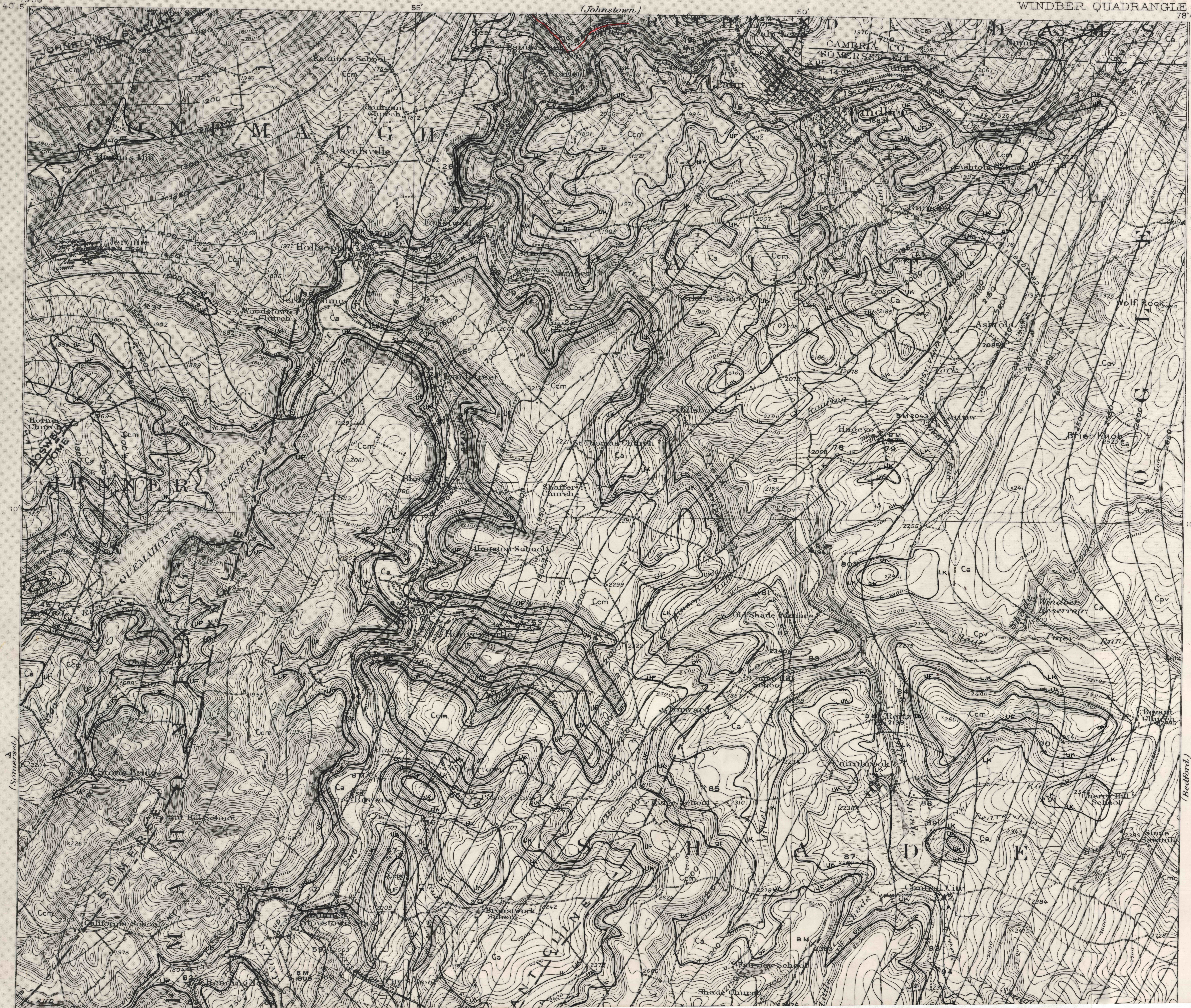
CARBONIFEROUS

DEVONIAN

Pennsylvanian

Mississippian

Upper Devonian



New Florence 79°00' 40'15"

78°45' (Blountsburg)

North Half of Windber Quad
Showing Coal Outcrops
1/2 2222
3/27/74