



MARK MINING INC.

A FETTEROLF GROUP COMPANY

R.D. 4
P.O. BOX 84
SOMERSET, PA 15501

MARK MINING INC.
MARK NO. 1 MINE
STONycreek SHADE TOWNSHIPS
SOMERSET COUNTY

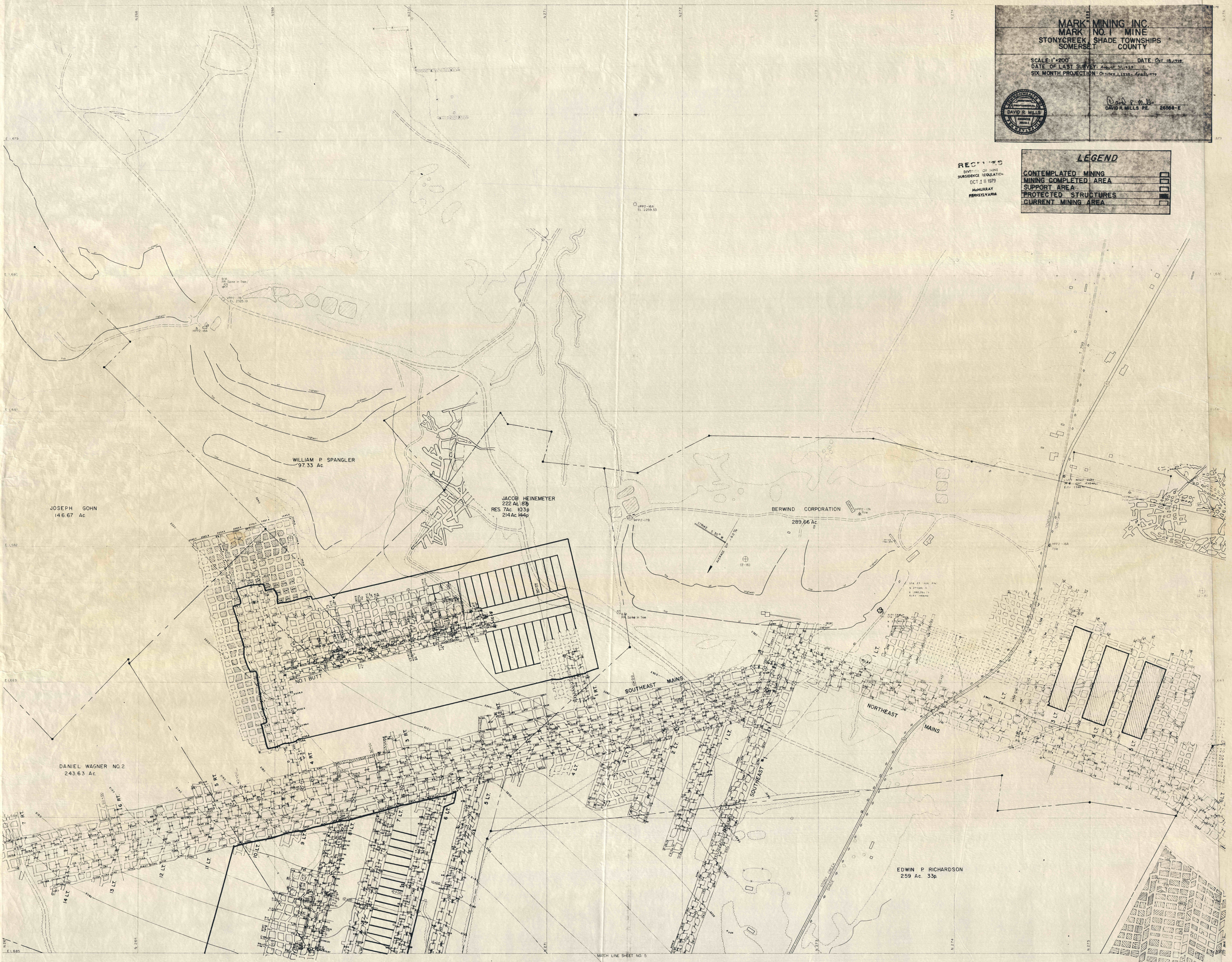
SCALE: 1" = 200' DATE: Oct. 18, 1979
DATE OF LAST SURVEY: August 25, 1978
SIX MONTH PROJECTION: October 1, 1978 - April 1, 1979

DAVID R. MILLS
DAVID R. MILLS P.E. 28568-E

RECEIVED
DIVISION OF MINE
SURVEILLANCE REGULATION
OCT 18 1979
McMURRAY
PENNSYLVANIA

LEGEND

| | |
|-----------------------|----------|
| CONTEMPLATED MINING | [Symbol] |
| MINING COMPLETED AREA | [Symbol] |
| SUPPORT AREA | [Symbol] |
| PROTECTED STRUCTURES | [Symbol] |
| CURRENT MINING AREA | [Symbol] |



Seads Engineering & Associated Design Services
Formerly Geis Engineers, Inc.
1126 Eighth Ave Altoona, PA 16603

SHADE & STONycreek TOWNSHIPS
SOMERSET COUNTY
PENNSYLVANIA

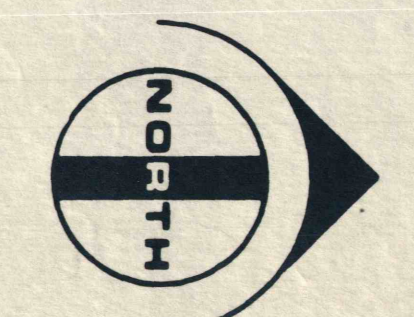
LEGEND

| | | | | | |
|----------|----------------------------|----------|------------|----------|----------------------------------|
| [Symbol] | UNPAVED ROAD | [Symbol] | RAILROAD | [Symbol] | BENCH MARK |
| [Symbol] | PAVED ROAD | [Symbol] | LAKE, POND | [Symbol] | TRAVERSE STATION |
| [Symbol] | U.S. ROUTE | [Symbol] | FENCE | [Symbol] | PHOTODIAGRAMMATIC SHOT ELEVATION |
| [Symbol] | INTERSTATE | [Symbol] | SWAMP | [Symbol] | CONTOURS |
| [Symbol] | L.R. 000 LEGISLATIVE ROUTE | [Symbol] | WOODS LINE | [Symbol] | PHOTO CENTER |
| [Symbol] | T. 000 TOWNSHIP ROUTE | | | | |

SCALE: 1" = 200'

DATE OF PHOTOGRAPHY: DECEMBER 5, 1976
CONTOUR INTERVAL: 5'

GRID VALUES IN HORIZONTALS ARE BASED ON PENNSYLVANIA STATE PLANE COORDINATE SYSTEM (NAD 83) ZONE 18.00. GRID VALUES IN VERTICALS ARE BASED ON NAD 83 MEAN SEA LEVEL DATUM.



| | | |
|---|---|---|
| 1 | 2 | 3 |
| 4 | 5 | 6 |

SHEET INDEX

PLANIMETRIC SERIES

SHEET NO. 2