

AREA OF INTEREST: SOMERSET TWP., SOMERSET COUNTY

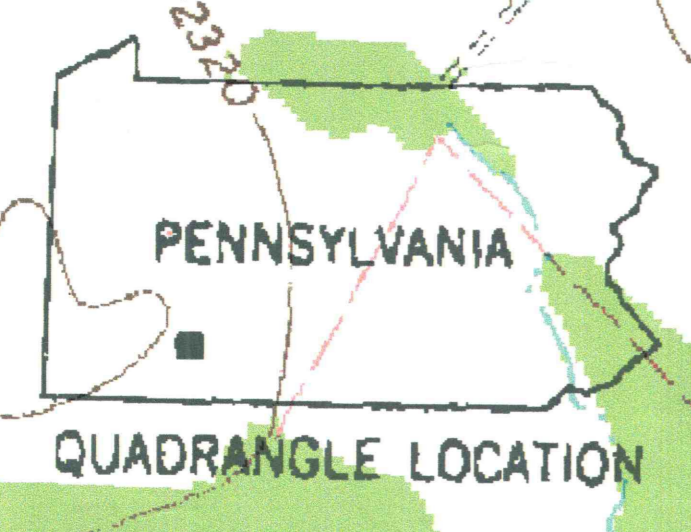
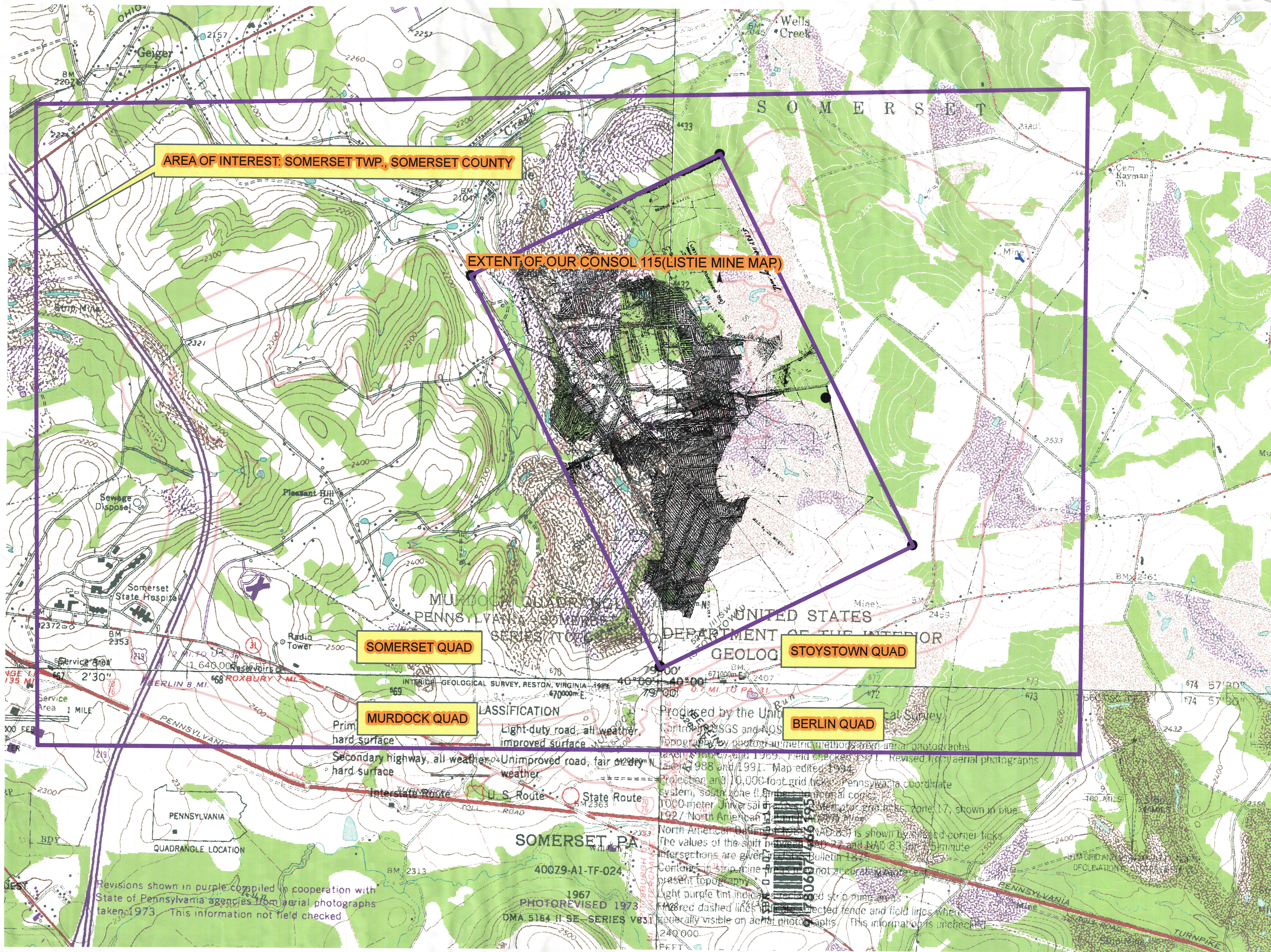
EXTENT OF OUR CONSOL 115 (LISTIE MINE MAP)

SOMERSET QUAD

STOYSTOWN QUAD

MURDOCK QUAD

BERLIN QUAD



Revisions shown in purple compiled in cooperation with State of Pennsylvania agencies from aerial photographs taken 1973. This information not field checked.

CLASSIFICATION  
Light-duty road, all weather, improved surface  
Secondary highway, all weather, hard surface  
Unimproved road, fair or dry weather  
Interstate Route  
U.S. Route  
State Route  
40079-A1-TF-024  
1967  
PHOTOREVISED 1973  
DMA 5164 II SE - SERIES V831

Produced by the United States Geological Survey and the Pennsylvania Geological Survey  
Topography by photogrammetric methods and aerial photographs taken 1967 and 1969. Field checked 1971. Revised from aerial photographs taken 1988 and 1991. Map edited 1994.  
Projection and 10,000-foot grid ticks: Pennsylvania coordinate system, south zone (1983).  
1000-meter Universal Transverse Mercator grid ticks, zone 17, shown in blue.  
North American Datum of 1983 is shown by circled corner ticks. The values of the shift between NAD 27 and NAD 83 for 2.5-minute intersections are given in Bulletin 1875.  
Contours in strip mine areas not accurately shown.  
Light purple tint indicates strip mine areas.  
Red dashed lines indicate detected fence and field lines where generally visible on aerial photographs. This information is unchecked.