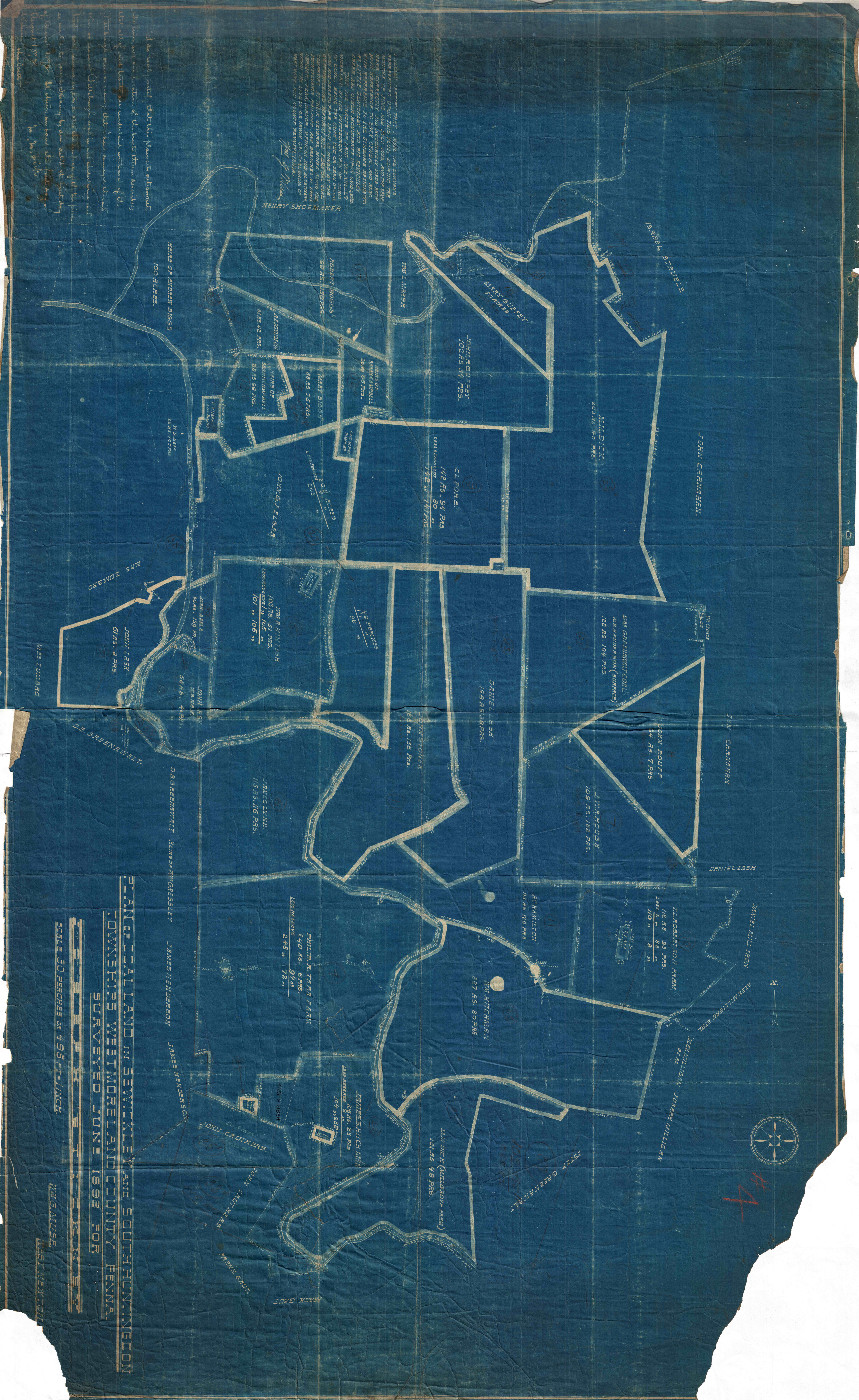


I HEREBY CERTIFY THAT I MADE THE SURVEY'S REPRESENTED BY THIS MAP, AND DURING THE MONTHS OF JUNE AND JULY 1893, AND THE SAME BEING CORRECTLY AND ACCURATELY MADE FROM THE ORIGINAL RECORDS OF THE COUNTY RECORDS AS LITTLE SEWICKLEY AND BIG SEWICKLEY CREEKS AND OTHER MONUMENTS BEING SAID LANDS. THAT THE TRACTS OF LAND REPRESENTED BY THE PRICES AND ACRES ARE CORRECTLY AND ACCURATELY MADE FROM THE ORIGINAL RECORDS OF THE COUNTY RECORDS AS LITTLE SEWICKLEY AND BIG SEWICKLEY CREEKS AND OTHER MONUMENTS BEING SAID LANDS.

HENRY SHOEMAKER

I do hereby certify that the plan and subdivision of the land shown on this map was made by me or under my direction and supervision, and that the same is a true and correct copy of the original records of the county records as Little Sewickley and Big Sewickley Creeks and other monuments being said lands.



PLAN OF COAL LAND IN SEWICKLEY AND SOUTH HUNTINGDON TOWNSHIPS WESTMORELAND COUNTY PENNA.

SURVEYED JUNE 1893 FOR

SCALE 30 PERCHES OR 496 FT. = 1 INCH.

W. G. MULLS WEST NEWTON



157