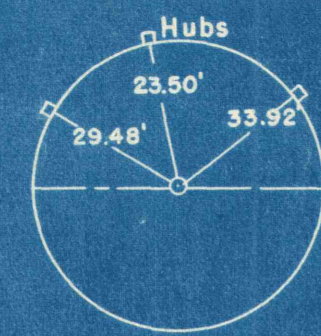
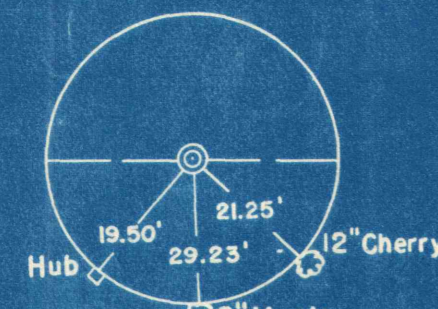


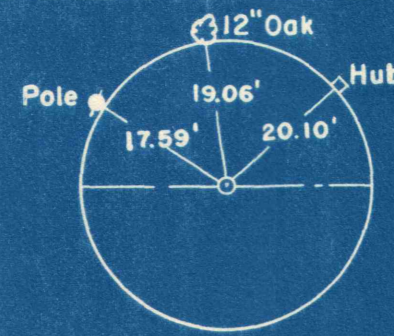
MAGNETIC BEARINGS



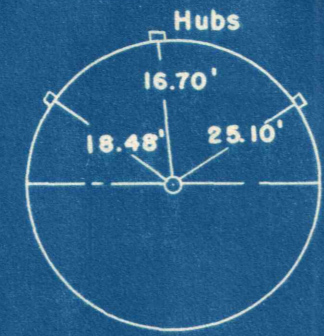
P.C. Sta. 119+57.92  
Bk. 22861 Pg. 59



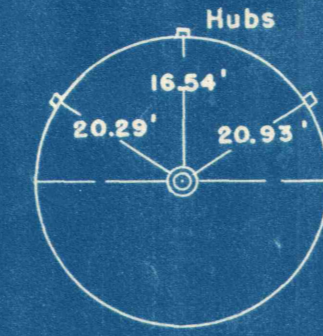
P.I. Sta. 120+16.01  
Bk. 22861 Pg. 59  
 $\Delta -16^{\circ} 07' Lt.$



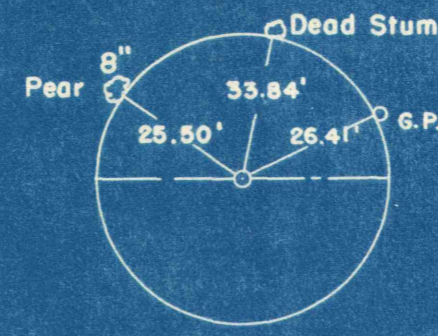
P.T. Sta. 120+73.33  
Bk. 22861 Pg. 59



P.C. Sta. 121+37.78  
Bk. 22861 Pg. 59



P.I. Sta. 122+11.54  
Bk. 22861 Pg. 61  
 $\Delta -20^{\circ} 23' Rt.$



P.T. Sta. 122+83.74 Bk. =  
Sta. 13 + 94.26 Ah.  
Bk. 22861 Pg. 61

SCOTT FINK  
% BARKLEY WESTMORELAND TRUST CO.  
Greensburg, Pa.

DAVID R. MAGILL  
R. D. # 3  
Irwin, Pa.

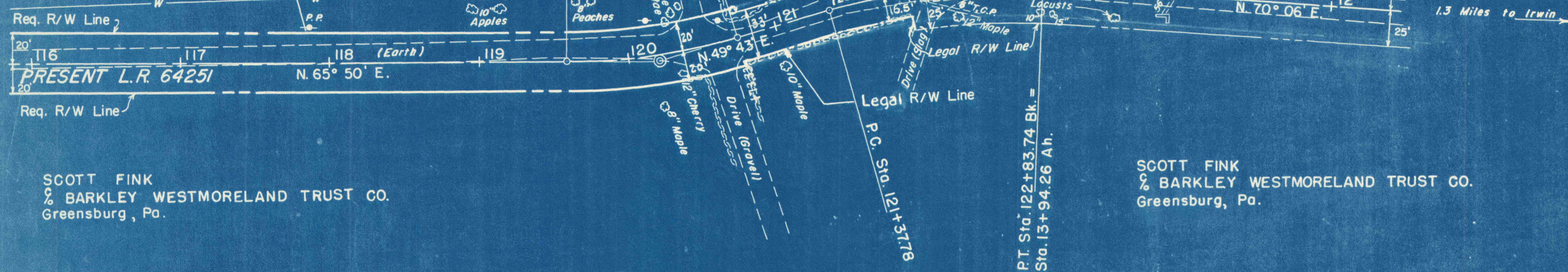
P.I. Sta. 120+16.01  
 $\Delta -16^{\circ} 07' Lt.$   
D - 14'  
R - 410.28'  
T - 58.09'  
L - 115.41' (Arc)  
Bk. 22861 Pg. 59

DAVID R. MAGILL  
R. D. # 3  
Irwin, Pa.

LIMIT OF CONDEMNATION  
Sta. 121 + 92  
S.L.D. Sta. 128 + 32

50' R/W per plan for  
L.R. 120 - Sec. 12 A  
Approved July 15, 1938

1.3 Miles to Irwin



SCOTT FINK  
% BARKLEY WESTMORELAND TRUST CO.  
Greensburg, Pa.

SCOTT FINK  
% BARKLEY WESTMORELAND TRUST CO.  
Greensburg, Pa.

P.I. Sta. 122+11.54  
 $\Delta -20^{\circ} 23' Rt.$   
D - 14'  
R - 410.28'  
T - 73.76'  
L - 145.96' (Arc)  
Bk. 22861 Pg. 61

DATUM