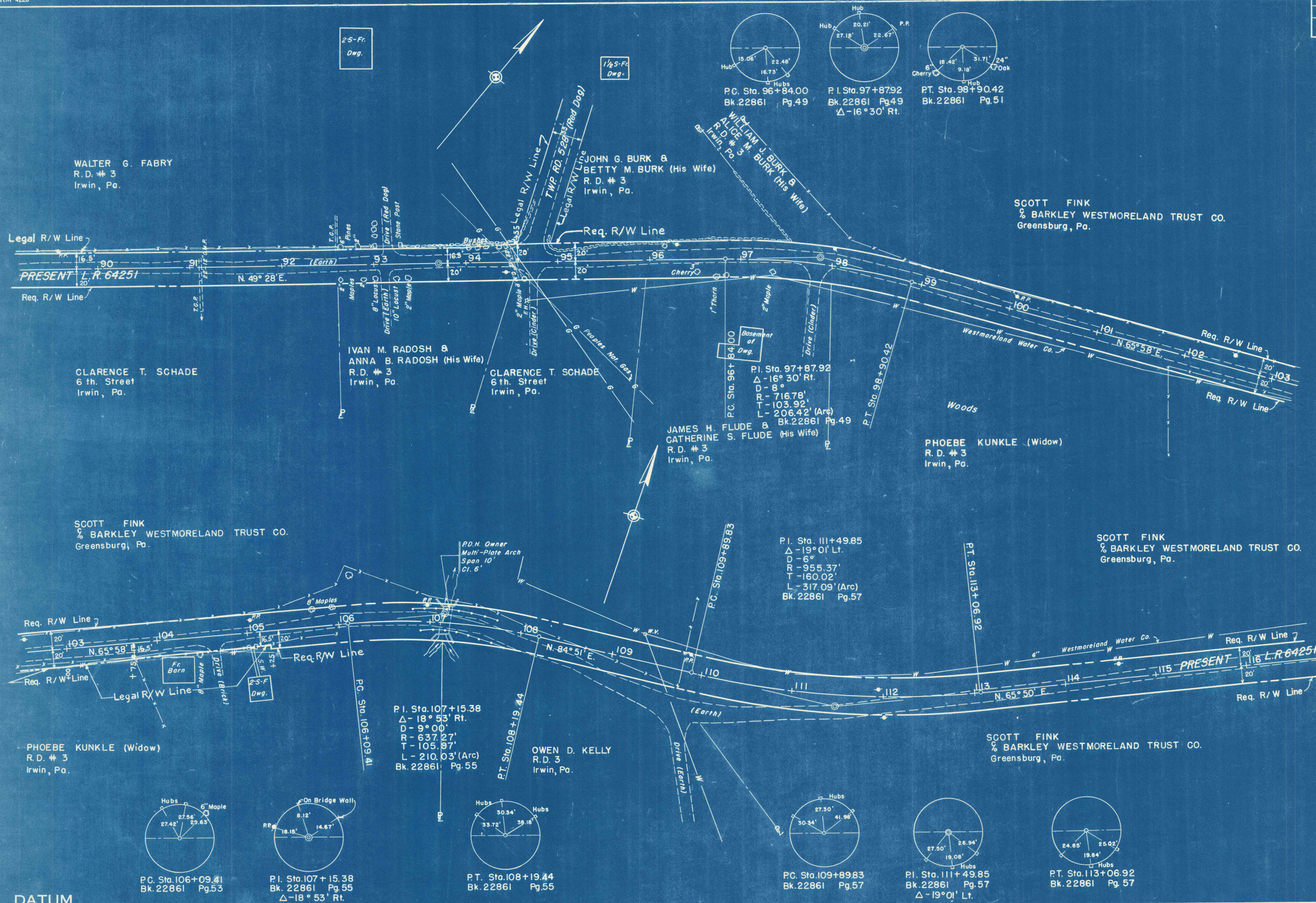


MAGNETIC BEARINGS



WALTER G. FABRY  
R.D. # 3  
Irwin, Pa.

JOHN G. BURK &  
BETTY M. BURK (His Wife)  
R.D. # 3  
Irwin, Pa.

SCOTT FINK  
% BARKLEY WESTMORELAND TRUST CO.  
Greensburg, Pa.

CLARENCE T. SCHADE  
6 th. Street  
Irwin, Pa.

IVAN M. RADOSH &  
ANNA B. RADOSH (His Wife)  
R.D. # 3  
Irwin, Pa.

CLARENCE T. SCHADE  
6 th. Street  
Irwin, Pa.

JAMES H. FLUDE &  
CATHERINE S. FLUDE (His Wife)  
R.D. # 3  
Irwin, Pa.

PHOEBE KUNKLE (Widow)  
R.D. # 3  
Irwin, Pa.

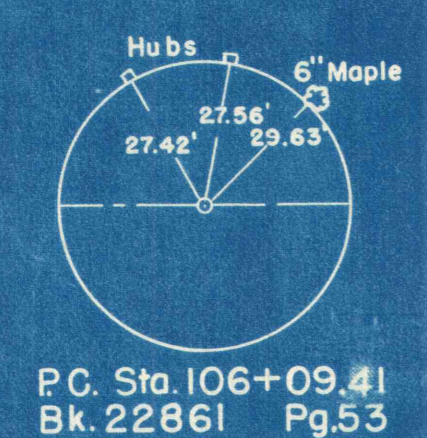
SCOTT FINK  
% BARKLEY WESTMORELAND TRUST CO.  
Greensburg, Pa.

SCOTT FINK  
% BARKLEY WESTMORELAND TRUST CO.  
Greensburg, Pa.

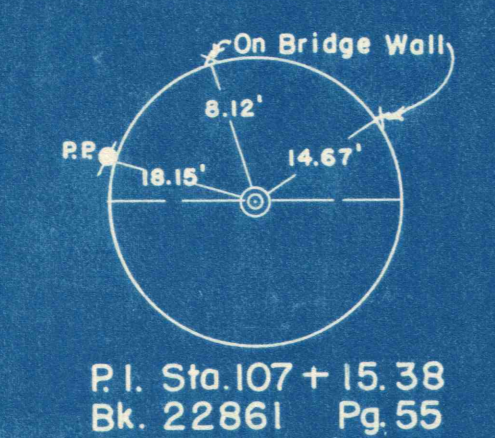
PHOEBE KUNKLE (Widow)  
R.D. # 3  
Irwin, Pa.

OWEN D. KELLY  
R.D. # 3  
Irwin, Pa.

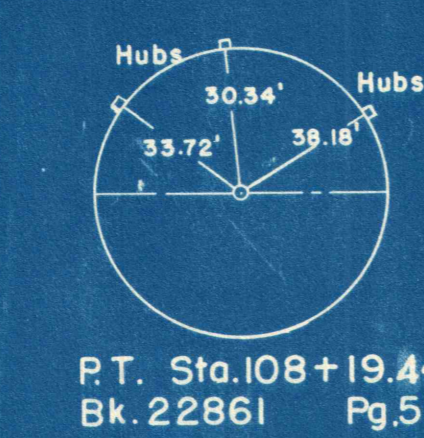
SCOTT FINK  
% BARKLEY WESTMORELAND TRUST CO.  
Greensburg, Pa.



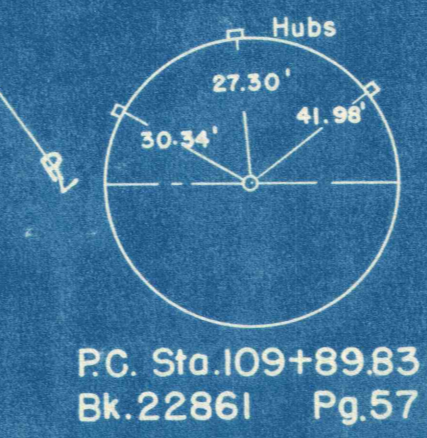
P.C. Sta. 106+09.41  
Bk. 22861 Pg. 53



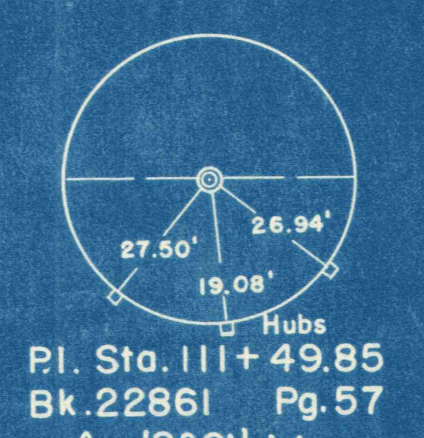
P.I. Sta. 107+15.38  
Bk. 22861 Pg. 55  
Δ - 18° 53' Rt.



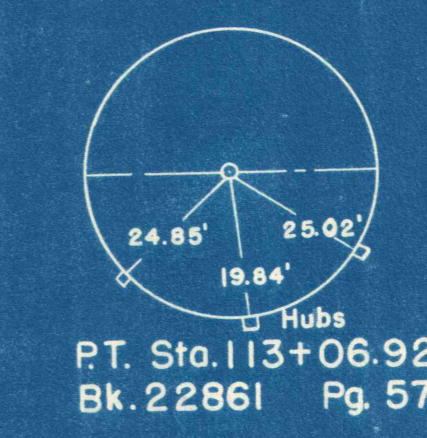
P.T. Sta. 108+19.44  
Bk. 22861 Pg. 55



P.C. Sta. 109+89.83  
Bk. 22861 Pg. 57



P.I. Sta. 111+49.85  
Bk. 22861 Pg. 57  
Δ - 19° 01' Lt.



P.T. Sta. 113+06.92  
Bk. 22861 Pg. 57

DATUM