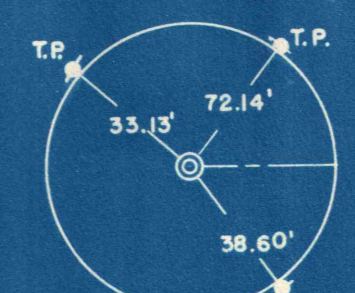
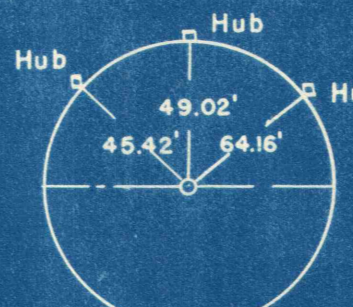


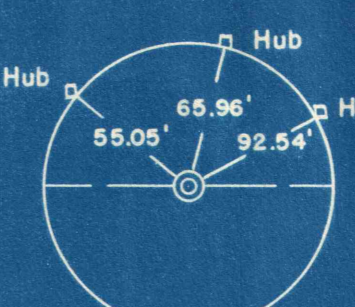
MAGNETIC BEARINGS



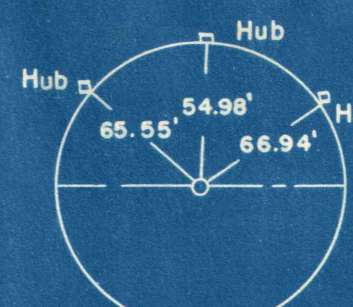
P.O.T. Sta. 0+00 =
Sta. 0+00 County Rd.
Rt. & Lt.
Bk. 22861 Pg. 3



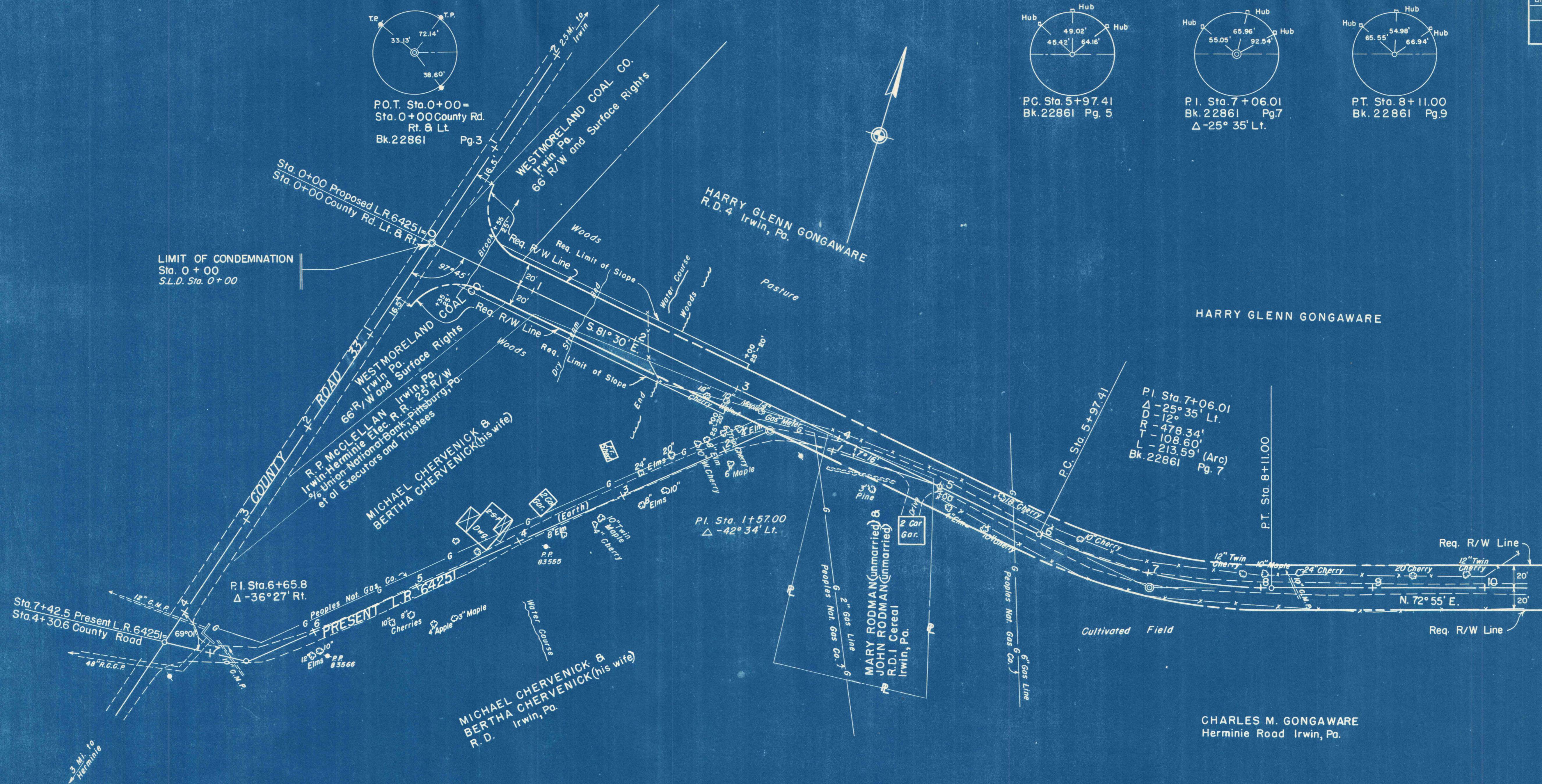
P.C. Sta. 5+97.41
Bk. 22861 Pg. 5



P.I. Sta. 7+06.01
Bk. 22861 Pg. 7
Δ -25° 35' Lt.



P.T. Sta. 8+11.00
Bk. 22861 Pg. 9



LIMIT OF CONDEMNATION
Sta. 0+00
S.L.D. Sta. 0+00

P.I. Sta. 7+06.01
Δ -25° 35' Lt.
D -12°
R -478.34'
T -108.60'
L -213.59' (Arc)
Bk. 22861 Pg. 7

P.I. Sta. 1+57.00
Δ -42° 34' Lt.

P.I. Sta. 6+65.8
Δ -36° 27' Rt.

CHARLES M. GONGAWARE
Herminie Road Irwin, Pa.

MICHAEL CHERVENICK &
BERTHA CHERVENICK (his wife)
R.D.
Irwin, Pa.

MARY RODMAN (unmarried) &
JOHN RODMAN (unmarried)
R.D. J. Cereal
Irwin, Pa.

DATUM